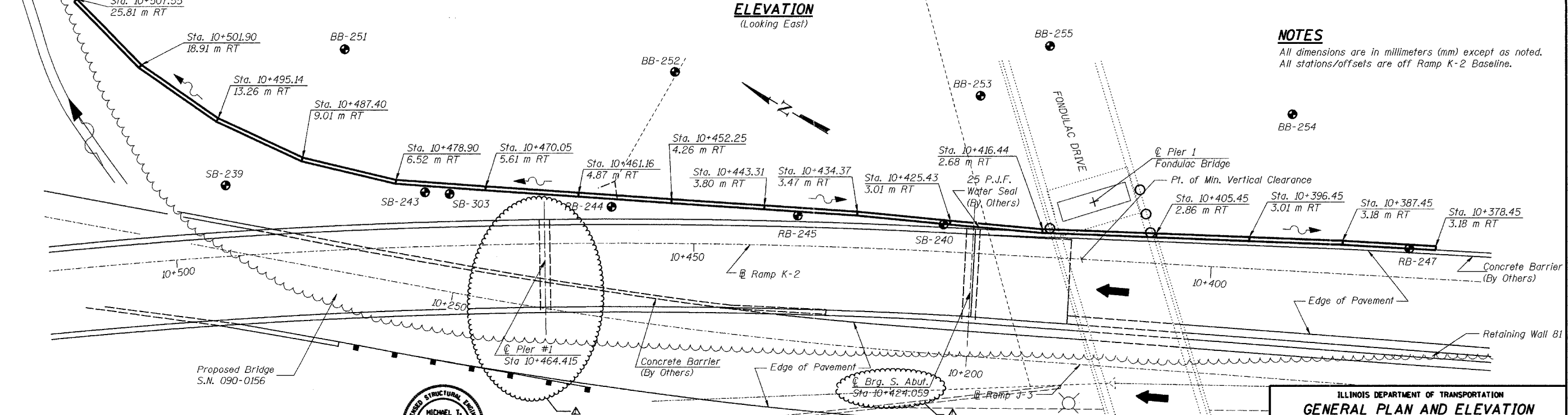
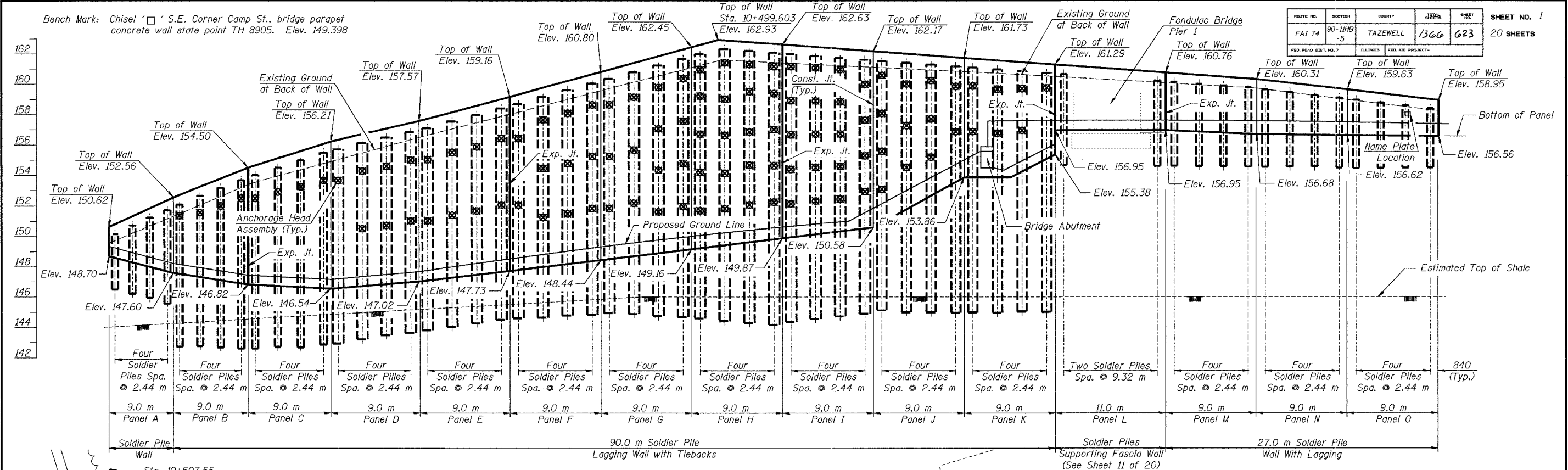


ROUTE NO.	SECTION	COUNTY	SHEETS	SHEET NO.	SHEET NO. 1
FAI 74	90-11HB-5	TAZEWELL	1366	623	20 SHEETS
FED. ROAD DIST. NO. 7	ILLINOIS	FED. AID PROJECT			



NOTES
 All dimensions are in millimeters (mm) except as noted.
 All stations/offsets are off Ramp K-2 Baseline.

DESIGN STRESSES
 $f'_c = 24 \text{ MPa (Concrete)}$
 $f'_c = 27.5 \text{ MPa (Grout)}$
 $f_y = 400 \text{ MPa (Reinf.)}$
 $f_y = 345 \text{ MPa (Soldier Piles) (M270 M Grade 345)}$
 $f'_s = 1860 \text{ MPa (15mm } \phi \text{ Low Lax Strands)}$
 $f_{su} = 1395 \text{ MPa (15mm } \phi \text{ Low Lax Strands)}$

Michael T. Haley
 Licensed Structural Engineer
 State of Illinois No. 81-5991
 Date

DESIGN SPECIFICATIONS
 1996 AASHTO Specifications
 with 1997 thru 2000 Interim



LIN ENGINEERING, LTD.
 30 W. Chestnut
 Chicago, Illinois 60610
 Tel: 312-467-1100
 Fax: 312-467-1100
 E-mail: lin@lin-engineering.com
 Date: 05/02 File: r20401-960908513.dgn

NO.	DATE	REVISIONS
1	MAY 27 2005	

ILLINOIS DEPARTMENT OF TRANSPORTATION
GENERAL PLAN AND ELEVATION
RETAINING WALL 82
F.A.I. RTE. 74 (I-74)
SECTION 90-11HB-5
TAZEWELL COUNTY
RAMP K-2 STATION 10+378 TO 10+507
STRUCTURE NUMBER 090-8513