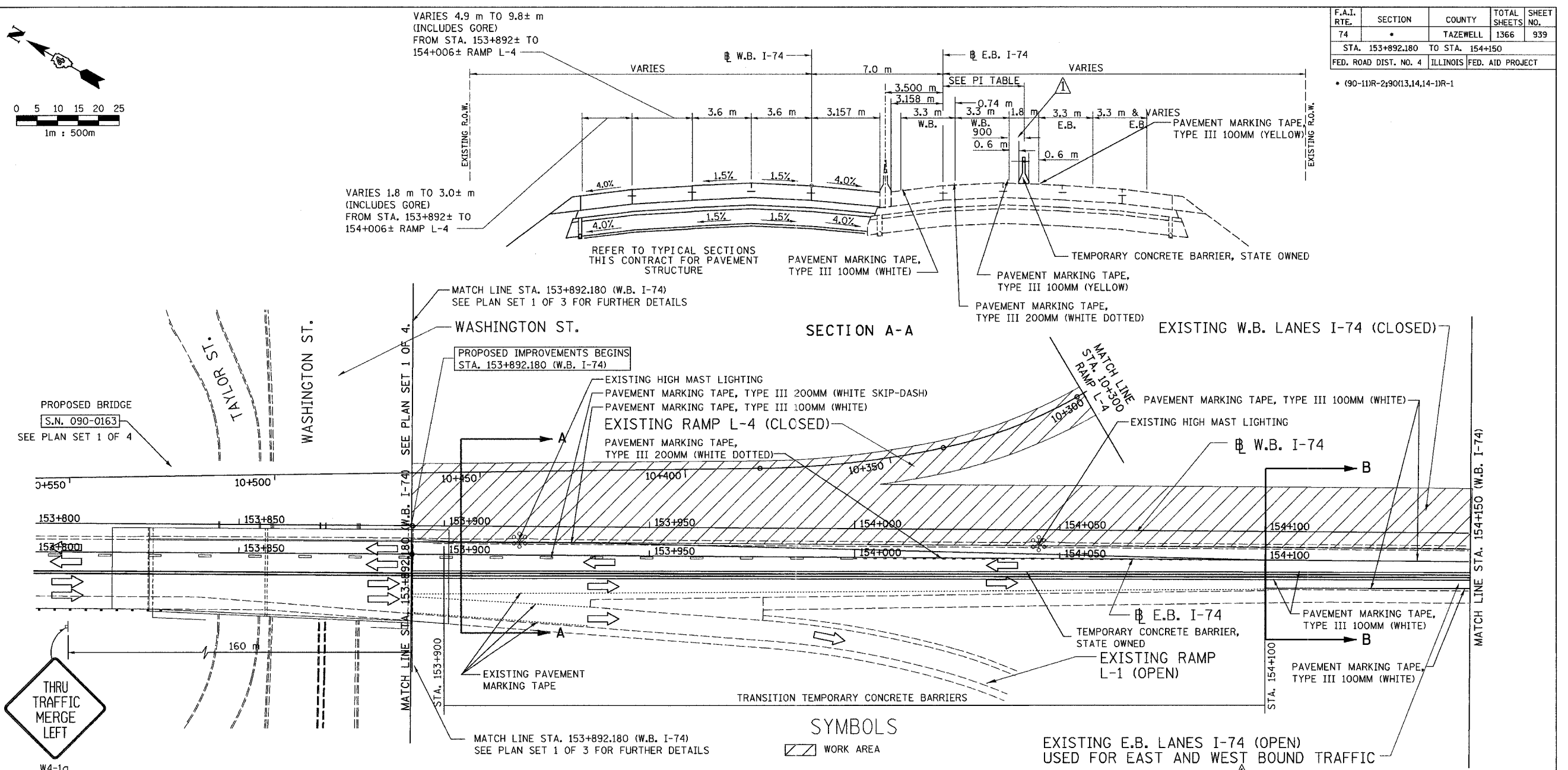


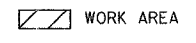
F.A.I. RTE.	SECTION	COUNTY	TOTAL SHEETS	SHEET NO.
74	*	TAZEWELL	1366	939
STA. 153+892.180 TO STA. 154+150				
FED. ROAD DIST. NO. 4 ILLINOIS FED. AID PROJECT				

• (90-111R-2;90113,14,14-1)R-1



MATCH LINE STA. 153+892.180 (W.B. I-74)  
SEE PLAN SET 1 OF 3 FOR FURTHER DETAILS

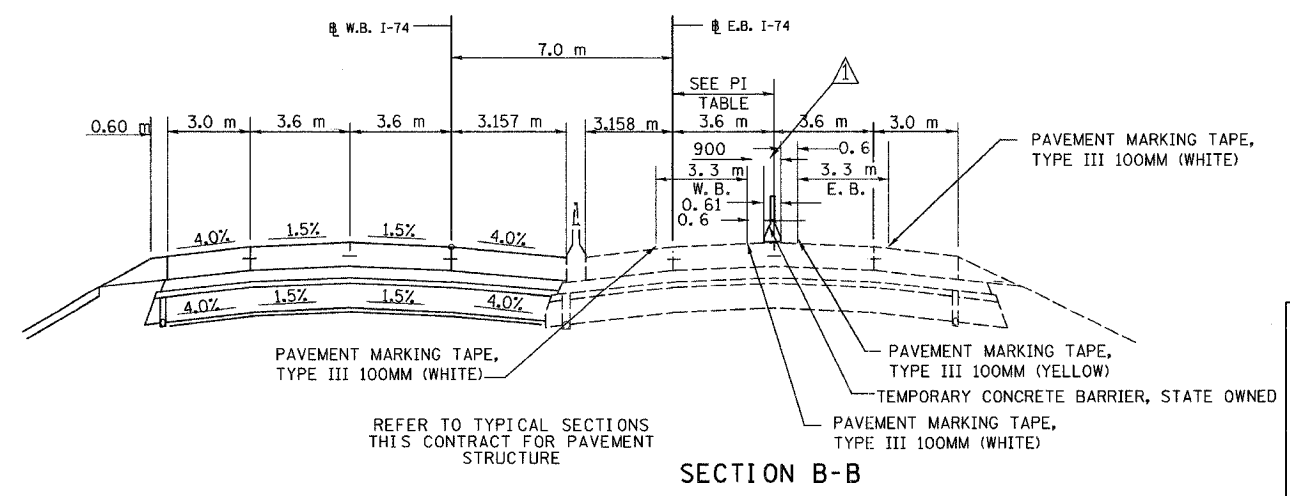
**SYMBOLS**



EXISTING E.B. LANES I-74 (OPEN)  
USED FOR EAST AND WEST BOUND TRAFFIC

POINTS OF INTERSECTION (PI) TABLE

LOCATION	OFFSET IN METERS FROM EASTBOUND BASE LINE					
	WESTBOUND			EASTBOUND		
	DOTTED WHITE	SOLID WHITE	SOLID YELLOW	SOLID YELLOW	CENTER WHITE	TCB LANE DIVIDER
STA. 153+892.00	2.26 LT	1.04 RT	4.34 RT	6.14 RT	5.24 RT	3.6 RT
STA. 154+100.00	0.6 LT	0.6 LT	2.7 RT	4.5 RT	7.8 RT	3.6 RT
STA. 154+150.00		0.6 LT	2.7 RT	4.5 RT	7.8 RT	3.6 RT



**SECTION B-B**

ALL DIMENSIONS ARE IN METERS (m) EXCEPT AS NOTED

ALL STATIONS INDICATED ARE WESTBOUND STATIONING UNLESS OTHERWISE NOTED.

REVISIONS	
NAME	DATE
ADDENDUM #1	MAY 27 2005

ILLINOIS DEPARTMENT OF TRANSPORTATION  
 MAINTENANCE OF TRAFFIC  
 STAGE 3A  
 STA. 153+892.180 TO STA. 154+150  
 DRAWN BY  
 CHECKED BY  
 DATE 05/10/2005

05/10/2005 11:07:16 AM G:\dotro\5589-74\dwg\Contractor\MT101\_3A-6A.DGN

CONTRACT 11: PLAN SET 2 OF 4 FINAL PLANS 01/05