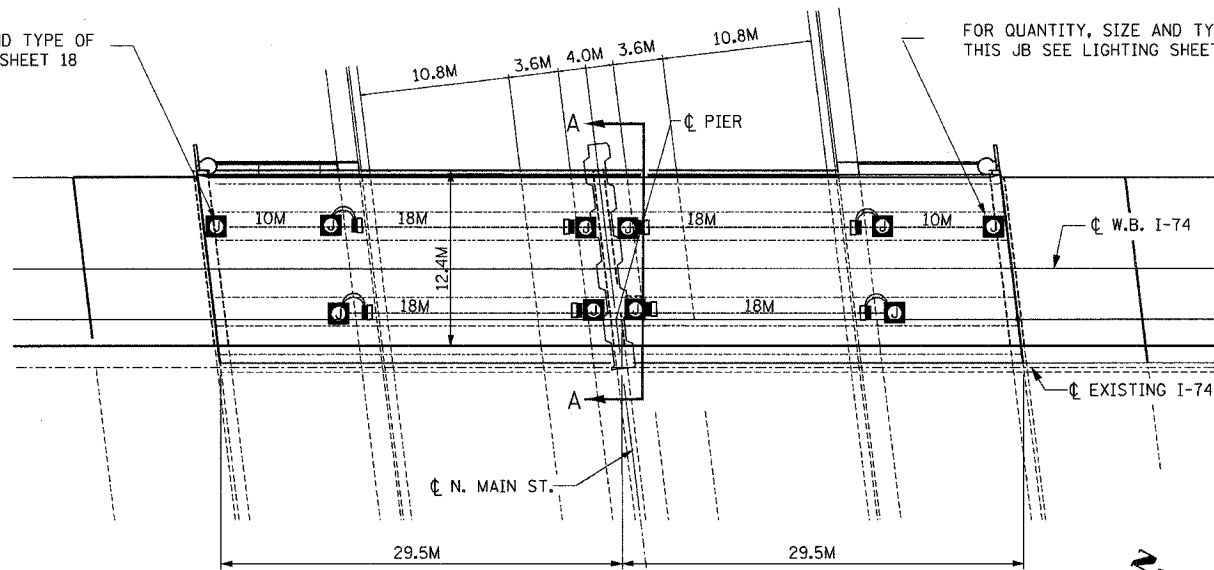


F.A.I. RTE.	SECTION	COUNTY	TOTAL SHEETS	SHEET NO.
74	*	TAZEWELL	1366	1224
STA.	TO STA.			
FED. ROAD DIST. NO.	ILLINOIS FED. AID PROJECT			
	* (90-11R-2)90(13, 14, 14-1R-1)			
	CONTRACT NO. 68201			

FOR QUANTITY, SIZE AND TYPE OF THIS JB SEE LIGHTING SHEET 18

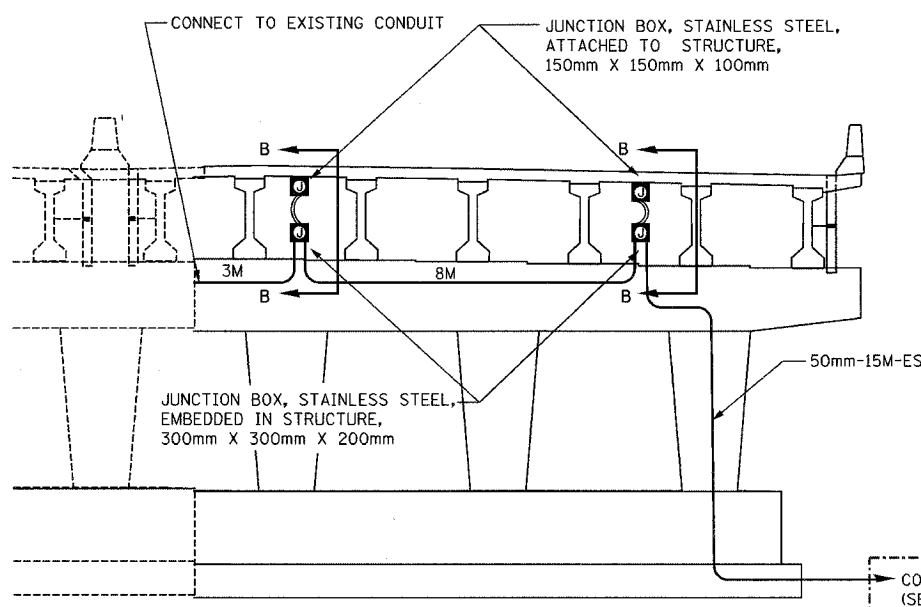
FOR QUANTITY, SIZE AND TYPE OF THIS JB SEE LIGHTING SHEET 18



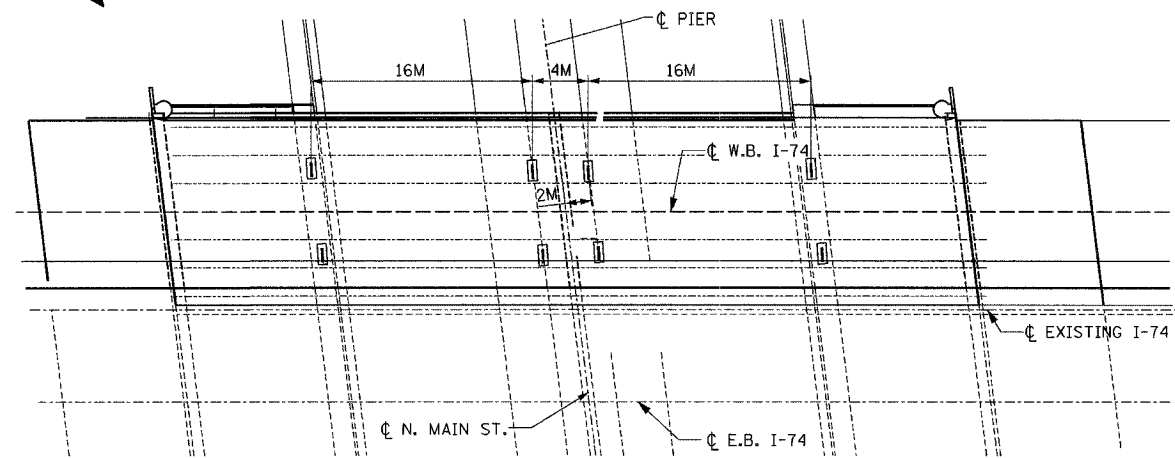
PLAN VIEW
ATTACHED CONDUIT & JUNCTION BOXES

STREET LIGHTING - BILL OF MATERIAL - THIS SHEET

PAY ITEM	UNIT	QTY.
CONDUIT ATTACHED TO STRUCTURE, 25mm DIA., GALVANIZED STEEL	METER	100.0
CONDUIT EMBEDDED IN STRUCTURE, 50mm DIA. PVC	METER	26.0
JUNCTION BOX, STAINLESS STEEL, ATTACHED TO STRUCTURE, 150mm X 150mm X 100mm	EACH	8
JUNCTION BOX, STAINLESS STEEL, EMBEDDED IN STRUCTURE, 300mm X 300mm X 200mm	EACH	2
UNDERPASS LUMINAIRE, (INSTALL ONLY)	EACH	8



SECTION A-A



PLAN VIEW
EMBEDDED CONCRETE INSERTS

- FOR WIRING PLAN SEE LIGHTING SHEET 20
- ALL EMBEDDED CONDUIT SHALL BE 50mm, PVC - SCH. 40, UNLESS OTHERWISE INDICATED.
- ALL JUNCTION BOXES ATTACHED TO STRUCTURE SHALL BE STAINLESS STEEL, 150mmx150mmx100mm, UNLESS OTHERWISE INDICATED.
- THE COST OF THE CONCRETE INSERTS SHALL BE INCLUDED IN THE PAY ITEM FOR "CONDUIT ATTACHED TO STRUCTURE."
- THE COST OF THE LIQUID-TIGHT CONDUIT SHALL BE INCLUDED IN THE PAY ITEM FOR "CONDUIT ATTACHED TO STRUCTURE."
- FOR SECTION B-B, SEE LIGHTING SHEET 15.

- LEGEND**
- PROPOSED JUNCTION BOX
 - PROPOSED ATTACHED CONDUIT, 25mm DIA., GALVANIZED STEEL
 - PROPOSED EMBEDDED CONDUIT, 50mm DIA. PVC SCHEDULE 40
 - PROPOSED LIQUID-TIGHT FLEXIBLE CONDUIT, 25mm
 - EMBEDDED CONCRETE INSERT (SEE DETAIL SHEET 33)
 - UNDERPASS LUMINAIRE, HPSV, 100 WATT, 240 VOLT (SEE DETAIL SHEET 33).

ab **alfred benesch & company**
CONSULTING ENGINEERS
205 NORTH MICHIGAN AVENUE, CHICAGO, ILLINOIS 60601

REVISIONS	
NAME	DATE
ADDENDUM #1	MAY 27 2005

LIGHTING SHEET 14 OF 41
ILLINOIS DEPARTMENT OF TRANSPORTATION
BRIDGE LIGHTING PLAN
W.B. I-74 OVER N. MAIN ST.
DATE: 12/20/04
DRAWN BY DJK/MMK
CHECKED BY MKR

4/21/2005 1:44:12 PM m:\pco\1357\3\LIGHTING\NGVZ4\Contract\ILLINOIS\7-4b\mfrn\mfrn.dgn