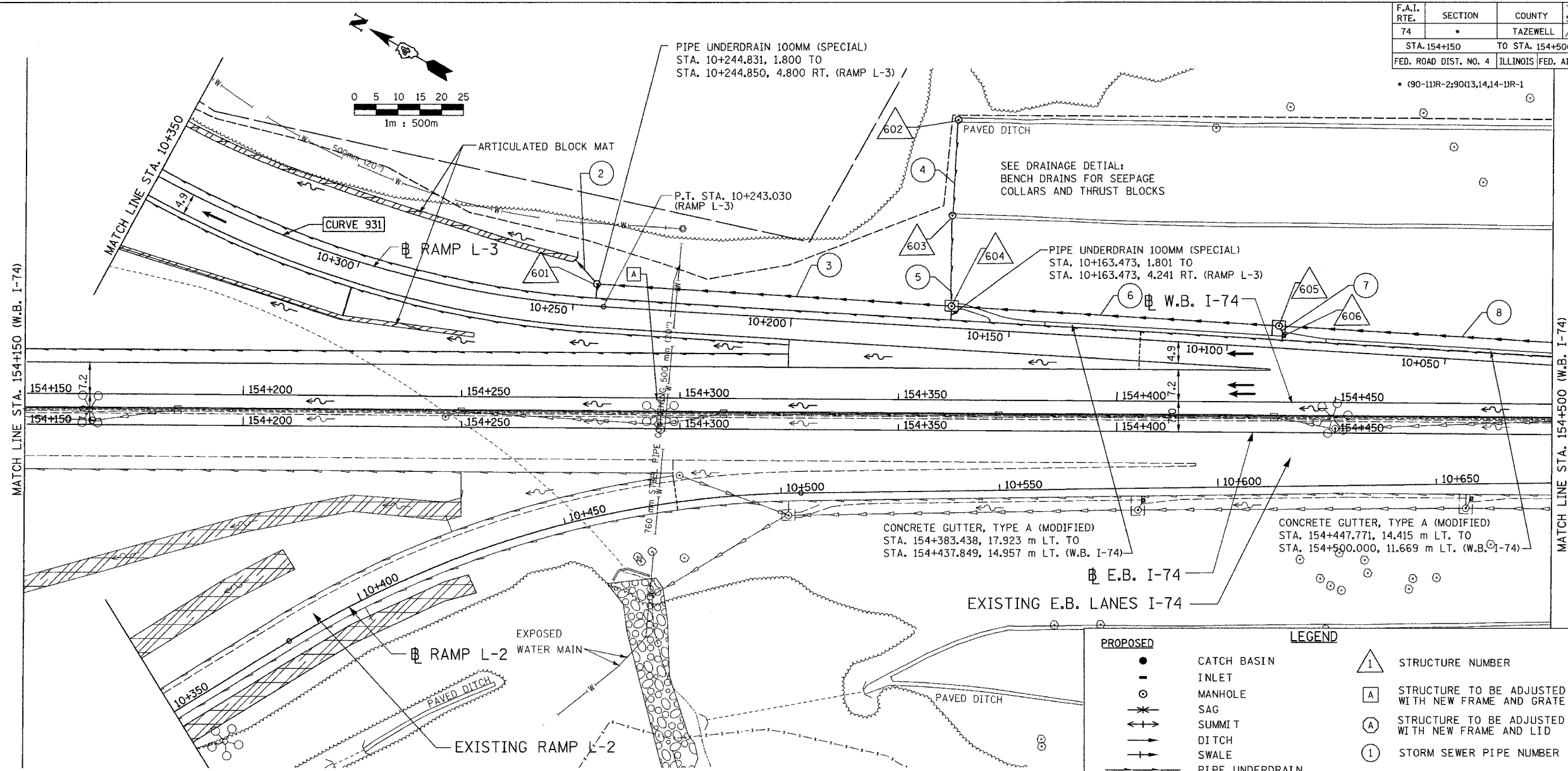


F.A.I. RTE.	SECTION	COUNTY	TOTAL SHEETS	SHEET NO.
74	*	TAZEWELL	100	100
STA. 154+150		TO STA. 154+500		
FED. ROAD DIST. NO. 4		ILLINOIS FED. AID PROJECT		



STORM SEWER PIPE SCHEDULE

PIPE NUMBER	FROM		TO		STORM SEWER CL. A 2 600	STORM SEWER CL. A 3 750	PIPE DRAIN 375	PIPE DRAIN 450	SLOPE	BACKFILL (CU M)
	STRUCTURE	INVERT	STRUCTURE	INVERT						
2	601	155.474	OUTLET	155.398					1.09%	13.4
3	604	156.773	601	155.874		7.0			1.12%	309.2
4	602	175.800	603	166.470		80.0			38.88%	**
5	603	166.370	604	158.773			24.0		35.33%	**
6	605	159.674	604	158.773		74.0			1.22%	275.0
7	606	162.313	605	161.892			2.1		20.00%	0.9
8	608	162.085	605	161.024	74.0				1.44%	255.2

** USE EXCAVATED MATERIAL FOR TRENCH, INCLUDED IN THE PRICE OF PIPE.

STORM SEWER STRUCTURE SCHEDULE

STRUCTURE NUMBER	LOCATION		STRUCTURE		RIM ELEVATION		INVERTS				REMARKS		
	STATION	OFFSET	MH A 1.2D TIF CL	MH A 1.2M T37G	EB	WB	INSIDE BASE	1	2	3		4	
601	154+280.817	25.822 LT.	1				155.674	N 155.474	SE 155.874				
602*	154+362.000	64.283 LT.		1			177.600	SW 175.000	NE 166.470				
603*	154+362.000	42.330 LT.		1			168.270	SW 166.370					
604	154+362.000	21.382 LT.			1		160.573	NW 156.773	SE 158.773	NE 158.773		*1.8M MANHOLE	
605	154+437.000	17.298 LT.			1		162.824	NW 159.674	SE 161.024	S 161.892		*1.2M MANHOLE	
606	154+438.140	15.080 LT.					162.313	N 162.313					

* LOCATION AND ELEVATION SHALL BE ADJUSTED AS NECESSARY TO FIT SITE CONDITIONS.

*SEE DRAINAGE DETAIL: INLETS, SPECIAL (MODIFIED)

PROPOSED

- CATCH BASIN
- INLET
- MANHOLE
- ~ SAG
- ↕ SUMMIT
- DITCH
- SWALE
- PIPE UNDERDRAIN
- SANITARY SEWER
- STORM SEWER
- FLOW DIRECTION
- END SECTION
- CULVERT
- RIGHT-OF-WAY
- CONSTRUCTION LIMITS

EXISTING

- GAS (LOCATION OF RECORD)
- SANITARY (LOCATION OF RECORD)
- TELEPHONE (LOCATION OF RECORD)
- WATER (LOCATION OF RECORD)
- DITCH

LEGEND

- ① STRUCTURE NUMBER
- [A] STRUCTURE TO BE ADJUSTED WITH NEW FRAME AND GRATE
- [A] STRUCTURE TO BE ADJUSTED WITH NEW FRAME AND LID
- ① STORM SEWER PIPE NUMBER
- [C] STRUCTURE TO BE CLEANED
- [F] STRUCTURE TO BE FILLED
- [REC] STRUCTURE TO BE RECONSTRUCTED WITH NEW FRAME AND LID
- [ADJ] STRUCTURE TO BE ADJUSTED

SHEET 4 OF 12

ALL DIMENSIONS ARE IN METERS (m) EXCEPT AS NOTED

ALL STATIONS INDICATED ARE WESTBOUND STATIONING UNLESS OTHERWISE NOTED.

ILLINOIS DEPARTMENT OF TRANSPORTATION

PROPOSED DRAINAGE & UTILITIES PLAN
F.A.I. ROUTE 74 (I-74)
STA. 154+150 TO STA. 154+500

DATE 01/07/2005

DRAWN BY
CHECKED BY

DAILY & ASSOCIATES, ENGINEERS, INC. PEORIA, ILLINOIS

REVISIONS

NAME	DATE

01/07/2005 02:40:39 PM
D:\gdt\5589-74\dwg\cont\plan\util-6a.dgn

CONTRACT 11: PLAN SET 2 OF 4 FINAL PLANS 01/05