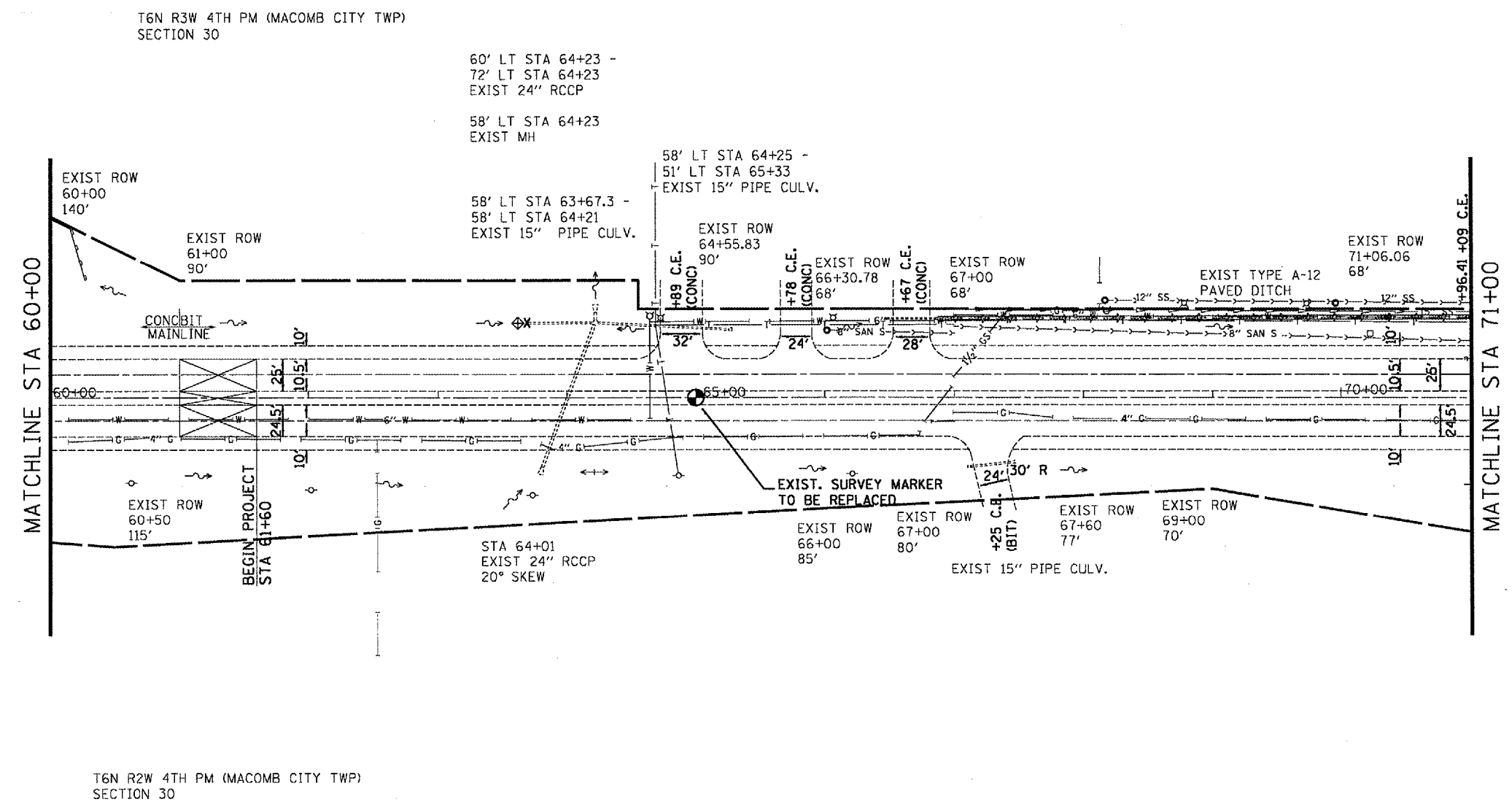


|                     |          |                  |              |           |
|---------------------|----------|------------------|--------------|-----------|
| CONTRACT NO. 68334  |          |                  |              |           |
| F.A.P. RTE.         | SECTION  | COUNTY           | TOTAL SHEETS | SHEET NO. |
| 310                 | 138-21RS | MCDONOUGH        | 66           | 26        |
| STA. 60+00          |          | TO STA. 71+00    |              |           |
| FED. ROAD DIST. NO. | ILLINOIS | FED. AID PROJECT |              |           |



T6N R2W 4TH PM (MACOMB CITY TWP)  
SECTION 30

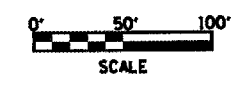
NOTE: The last 60' of 4 1/2" bituminous surface removal shall be paid for as BITUMINOUS SURFACE REMOVAL - BUTT JOINT.

REMOVAL LEGEND

- BUTT JOINT
- GUARDRAIL REMOVAL
- CULVERT REMOVAL

EROSION CONTROL LEGEND

- PERIMETER EROSION BARRIER
- INLET & PIPE PROTECTION
- GRADE & SHAPE DITCH



| REVISIONS |      |
|-----------|------|
| NAME      | DATE |
|           |      |
|           |      |
|           |      |
|           |      |
|           |      |
|           |      |
|           |      |
|           |      |
|           |      |
|           |      |

ILLINOIS DEPARTMENT OF TRANSPORTATION

**EXISTING / REMOVAL**

**STA 60+00 - 71+00**

SCALE: VERT. 1" = 50'  
HORIZ. 1" = 50'

DATE: \_\_\_\_\_ DRAWN BY: CADD  
CHECKED BY: \_\_\_\_\_

PLOT DATE = 3/26/2009  
 FILE NAME = c:\projects\68334\sheet.dgn  
 PLOT SCALE = 1/8"=1'-0"  
 REFERENCE = SHEET