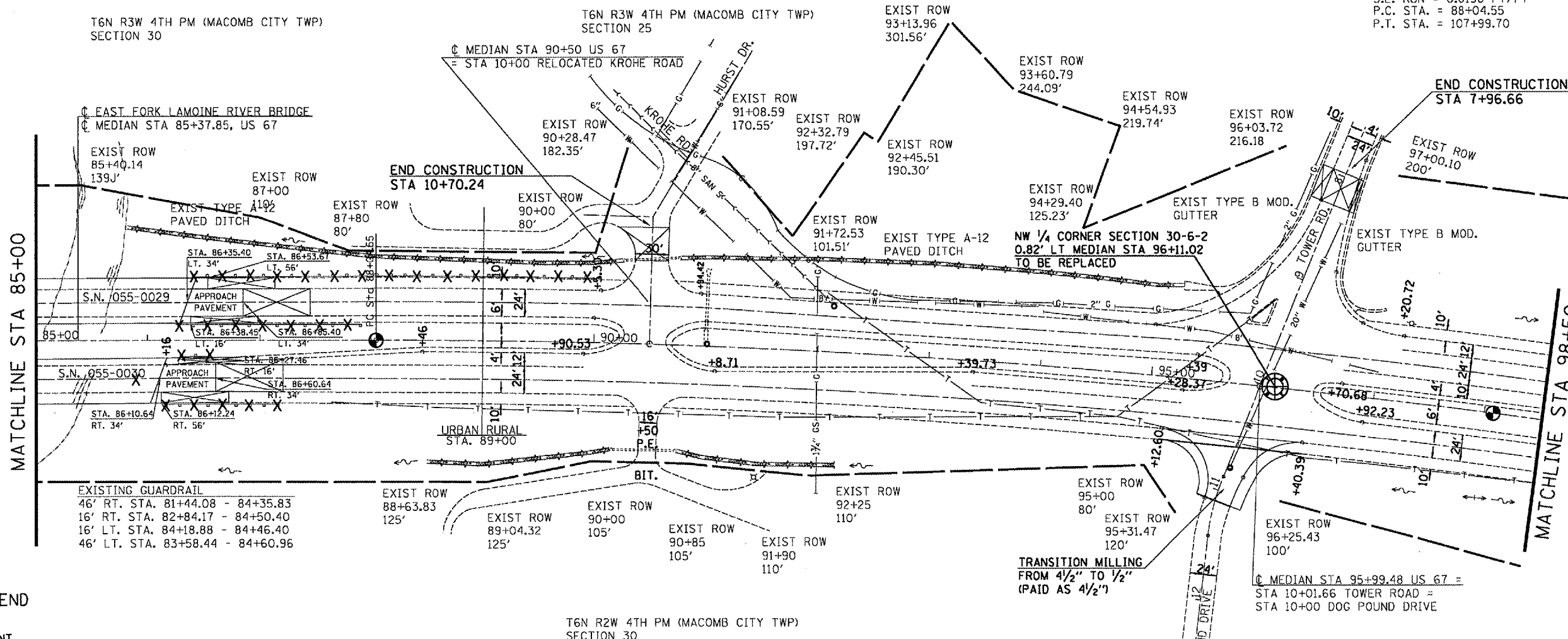


F.A.P. RTE.	SECTION	COUNTY	TOTAL SHEETS	SHEET NO.
310	138-21RS	MCDONOUGH	66	28
STA. 85+00		TO STA. 98+50		
FED. ROAD DIST. NO.		ILLINOIS FED. AID PROJECT		

NOTE: The last 60' of 4 1/2" bituminous surface removal shall be paid for as BITUMINOUS SURFACE REMOVAL - BUTT JOINT.

EXIST. CURVE C. MEDIAN
 PI STA. = 98+07.83
 $\Delta = 14^\circ 57' 49''$ (RT)
 $D = 0^\circ 45' 00''$
 $R = 7,639.44'$
 $T = 1,003.28'$
 $L = 1,995.15'$
 $E = 65.60'$
 S.E. RUN = 0.0156 FT/FT
 P.C. STA. = 88+04.55
 P.T. STA. = 107+99.70

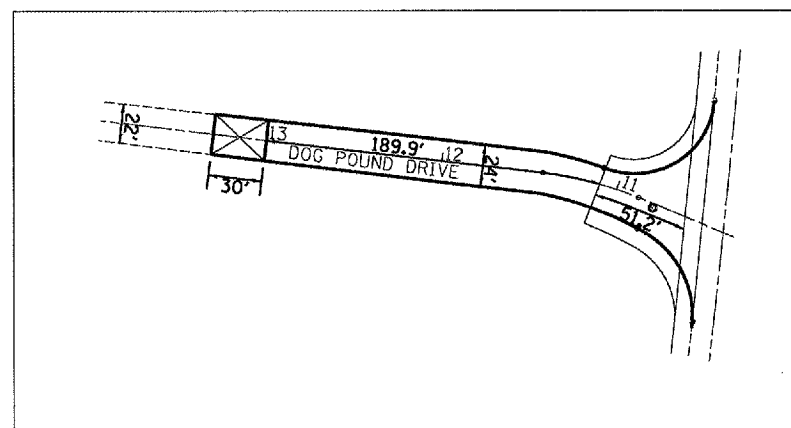


REMOVAL LEGEND

- BUTT JOINT
- GUARDRAIL REMOVAL
- CULVERT REMOVAL

EROSION CONTROL LEGEND

- PERIMETER EROSION BARRIER
- INLET & PIPE PROTECTION
- GRADE & SHAPE DITCH



REVISIONS	
NAME	DATE

ILLINOIS DEPARTMENT OF TRANSPORTATION
EXISTING / REMOVAL
 STA 85+00 - 98+50

SCALE: VERT. 1" = 50'
 DATE: _____ HORIZ. _____
 DRAWN BY: CADD
 CHECKED BY: _____

PLOT DATE: 3/28/2005
 FILE NAME: c:\projects\68334\sheet28.dgn
 PLOT SCALE: 1/8"=1'-0"
 REFERENCE: 1100PS