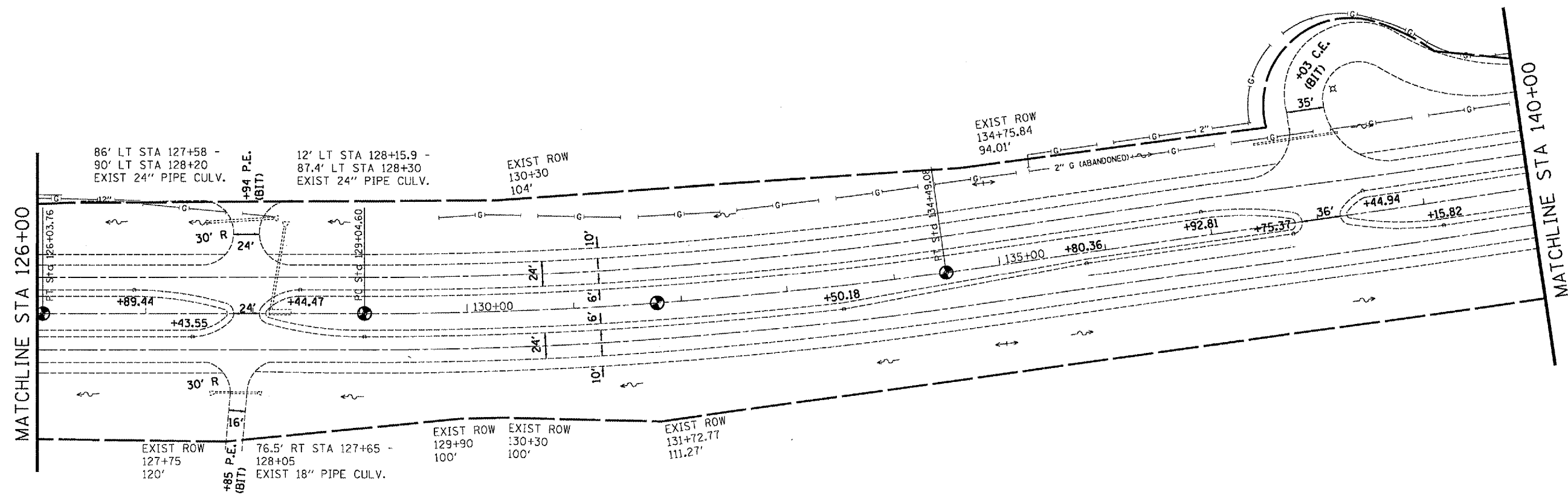


F.A.P. RTE.	SECTION	COUNTY	TOTAL SHEETS	SHEET NO.
310	(38-2)RS	MCDONOUGH	66	31
STA. 126+00		TO STA. 140+00		
FED. ROAD DIST. NO.	ILLINOIS	FED. AID PROJECT		



EXIST. CURVE @ MEDIAN
 PI STA. = 131+77.30
 $\Delta = 8^\circ 10' 02''$ (LT)
 $D = 1^\circ 30' 00''$
 $R = 3,819.72'$
 $T = 272.70'$
 $L = 544.48'$
 $E = 9.72'$
 S.E. RUN = 0.030 FT/FT
 P.C. STA. = 129+04.60
 P.T. STA. = 134+49.08

T6N R3W 4TH PM (EMMET TWP)
 SECTION 24



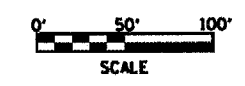
T6N R2W 4TH PM (MACOMB TWP)
 SECTION 19

REMOVAL LEGEND

- BUTT JOINT
- GUARDRAIL REMOVAL
- CULVERT REMOVAL

EROSION CONTROL LEGEND

- PERIMETER EROSION BARRIER
- INLET & PIPE PROTECTION
- GRADE & SHAPE DITCH



REVISIONS	
NAME	DATE

ILLINOIS DEPARTMENT OF TRANSPORTATION
EXISTING / REMOVAL
STA 126+00 - 140+00
 SCALE: VERT. 1" = 50'
 DATE: _____ DRAWN BY: CADD
 CHECKED BY: _____

PLOT DATE = 3/23/2005
 FILE NAME = c:\pwworkspace\68334\sheet.dgn
 PLOT SCALE = 1/8" = 100' / IN.
 REFERENCE = MRP#