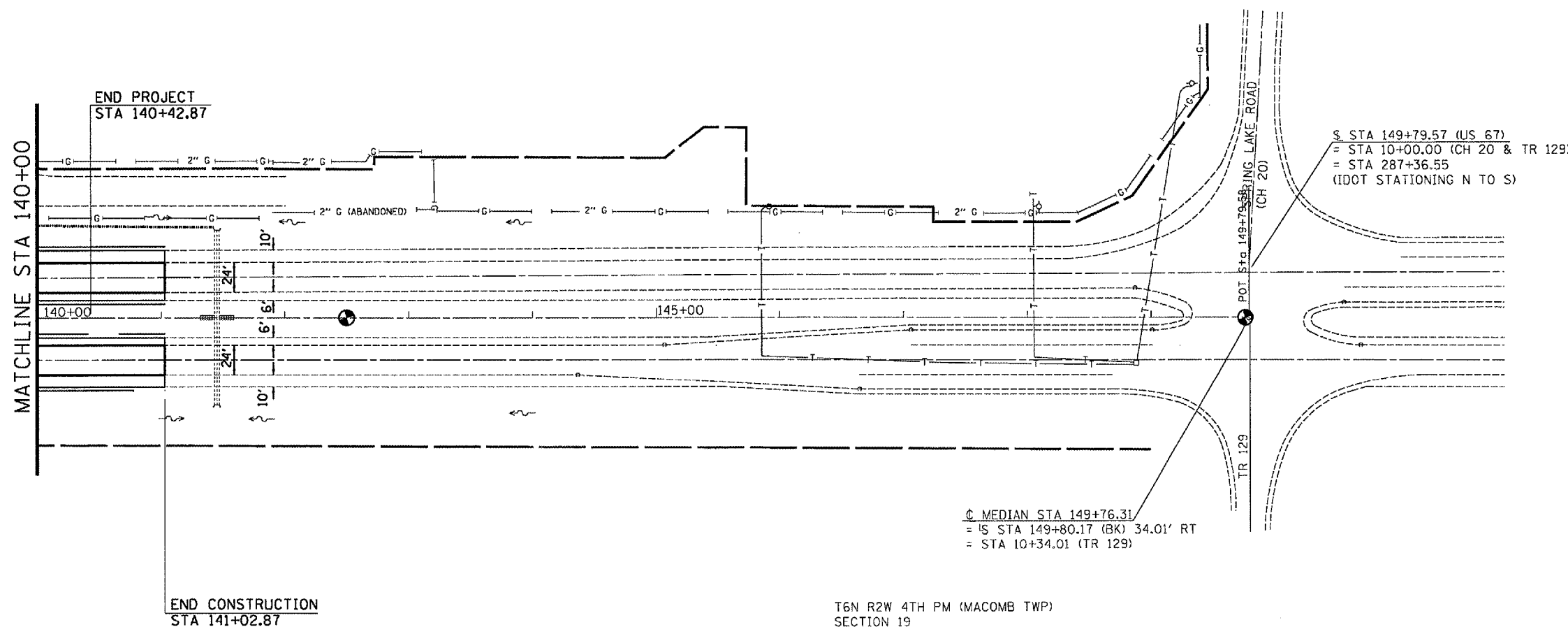


F.A.P. RTE.	SECTION	COUNTY	TOTAL SHEETS	SHEET NO.
310	138-21RS	MCDONOUGH	66	40
STA. 140+00		TO STA. E.O.P.		
FED. ROAD DIST. NO.		ILLINOIS	FED. AID PROJECT	



T6N R3W 4TH PM (EMMET TWP)  
SECTION 24



⊖ MEDIAN STA 149+76.31  
= S STA 149+80.17 (BK) 34.01' RT  
= STA 10+34.01 (TR 129)

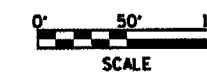
⊖ STA 149+79.57 (US 67)  
= STA 10+00.00 (CH 20 & TR 129)  
= STA 287+36.55  
(IDOT STATIONING N TO S)

PROPOSED LEGEND

- GUARDRAIL
- END SECTION REPLACEMENT
- RIPRAP

EROSION CONTROL LEGEND

- PERIMETER EROSION BARRIER
- INLET & PIPE PROTECTION
- GRADE & SHAPE DITCH



REVISIONS	
NAME	DATE

ILLINOIS DEPARTMENT OF TRANSPORTATION

**PROPOSED**  
**STA 140+00 - E.O.P.**

SCALE: VERT. 1" = 50'  
HORIZ. DATE

DRAWN BY CADD  
CHECKED BY