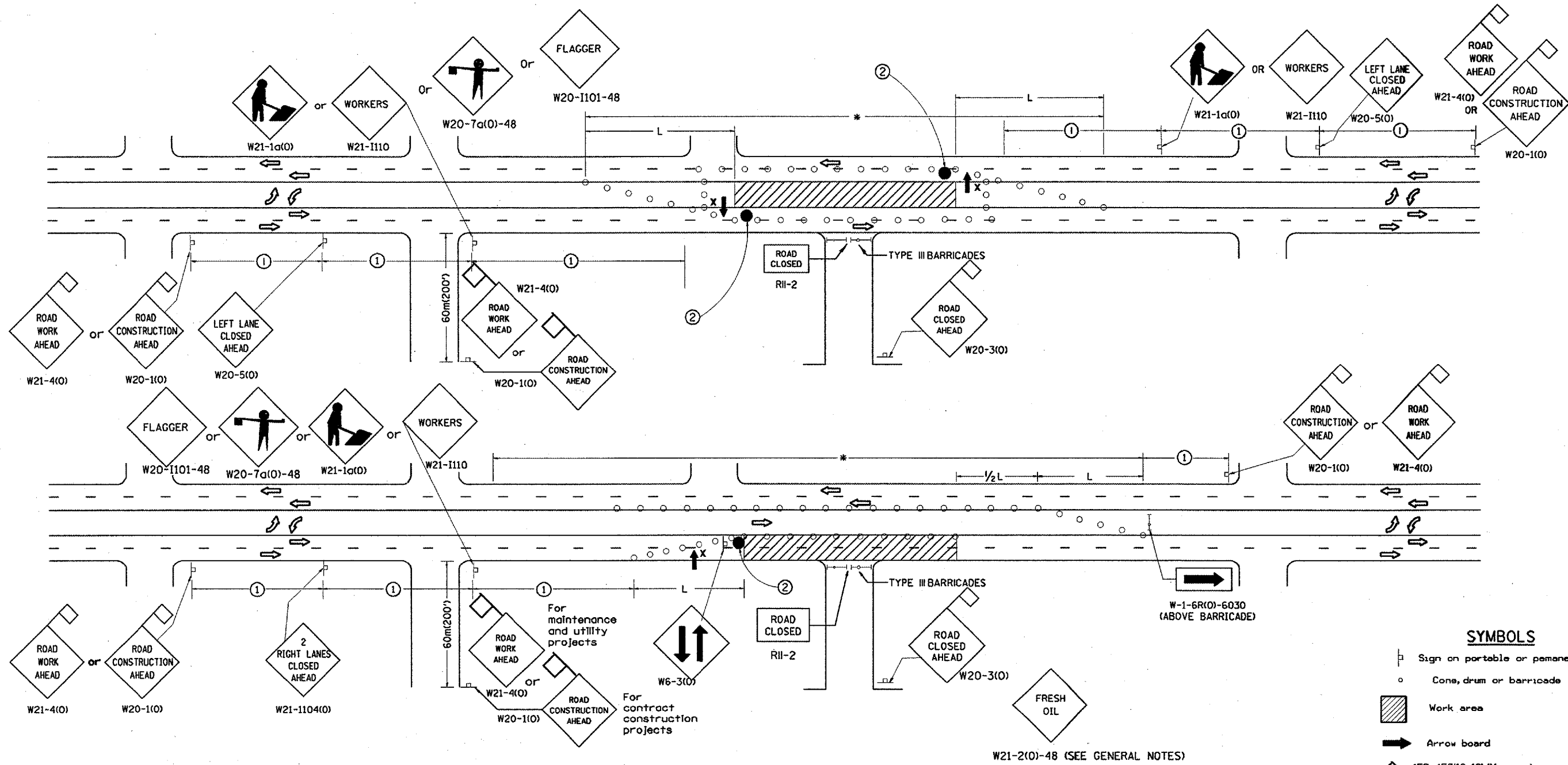


F.A.P. RTE.	SECTION	COUNTY	TOTAL SHEETS	SHEET NO.
310	(38-2)RS	MCDONOUGH	66	63
STA.	TO STA.			
FED. ROAD DIST. NO.	ILLINOIS	FED. AID PROJECT		



**GENERAL NOTES**

Cones at 8 m(25') centers for 75 m(250'). Additional cones may be placed at 15 m(50') centers. When drums or type I or II barricades are used, the interval between devices may be doubled.

Where, at anytime, day or night, any vehicle, equipment, workers or their activities encroach on the pavement requiring the closure of one traffic lane in an Urban area.

The L distance shall be defined as:  
 METRIC ENGLISH  
 $L = WS^2/150$      $L = WS^2/60$   
 Where: W = Width of closure in meters(feet).  
 S = Normal posted speed limit in km/h(mph).

If the work operation is performed between 9:00 a.m. and 3:00 p.m. and does not exceed 15 min Traffic protection shall be as shown for Std. 701301.

Form "BT 725" is required.

SIGN SPACING	
Posted Speed	Sign Spacing
55	164m (500')
50-45	115m (350')
<45	60m (200')

- ① = Refer to SIGN SPACING TABLE for distances.
- ② = Required for speeds > 40 MPH

**SYMBOLS**

- Sign on portable or permanent support
- Cone, drum or barricade
- ▨ Work area
- ➔ Arrow board
- ◇ 450x450(18x18) (Minimum) orange flag
- ⊙ Drum or barricade with flashing light
- X High level warning device
- Flagger with traffic control sign

All dimensions are in millimeters (inches) unless otherwise noted.

DATE	REVISIONS	BY
1-1-97	RENUM. F-6.06, NEW REVISIONS BOX, REVISED TITLE	T.P.
3-11-97	CHANGE TITLE, ADD SHEET 2	S.N.
6-1-97	REVISE SYMBOLS NOTE	S.N.
3-9-99	REVISE SYMBOLS & NOTES	S.N.

ILLINOIS DEPARTMENT OF TRANSPORTATION  
**DISTRICT CADD STANDARD**  
 STANDARD 701606 (SPECIAL)  
 URBAN LANE CLOSURE  
 MULTILANE, 2-WAY WITH  
 BIDIRECTIONAL LEFT TURN LANE  
 FOR SPEEDS < 45 MPH  
 CADD STD. 701606-D4 SHEET 1 OF 2  
 SCALE: NOT DRAWN TO SCALE DRAWN BY CADD CHECKED BY

\$\$\$DATE\$\$\$