

68425

F.A.I. RTE.	SECTION	COUNTY	TOTAL SHEETS	SHEET NO.
155	D4DEBRIS.ROLL	TAZEWELL	10	1

STATE OF ILLINOIS  
DEPARTMENT OF TRANSPORTATION  
DIVISION OF HIGHWAYS

# PROPOSED HIGHWAY PLANS

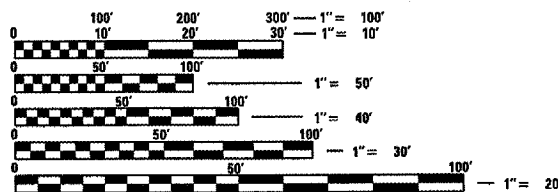
FAI 155 (I-155)  
SECTION D4 DEBRIS ROLLER 2005-1  
PROJECT S.N. 090-0100  
TAZEWELL COUNTY  
C-94-006-05

**INDEX OF SHEETS:**

1. COVER SHEET
2. COMMITMENTS & GENERAL NOTES
3. SUMMARY OF QUANTITIES
4. TYPICAL SECTIONS
5. SCHEDULE OF QUANTITIES
6. PLAN & ELEVATION
7. TRAFFIC STAGING PLAN
8. SUBSTRUCTURE & MOAB LAYOUT
9. PILE DETAIL
10. MOAB DETAIL

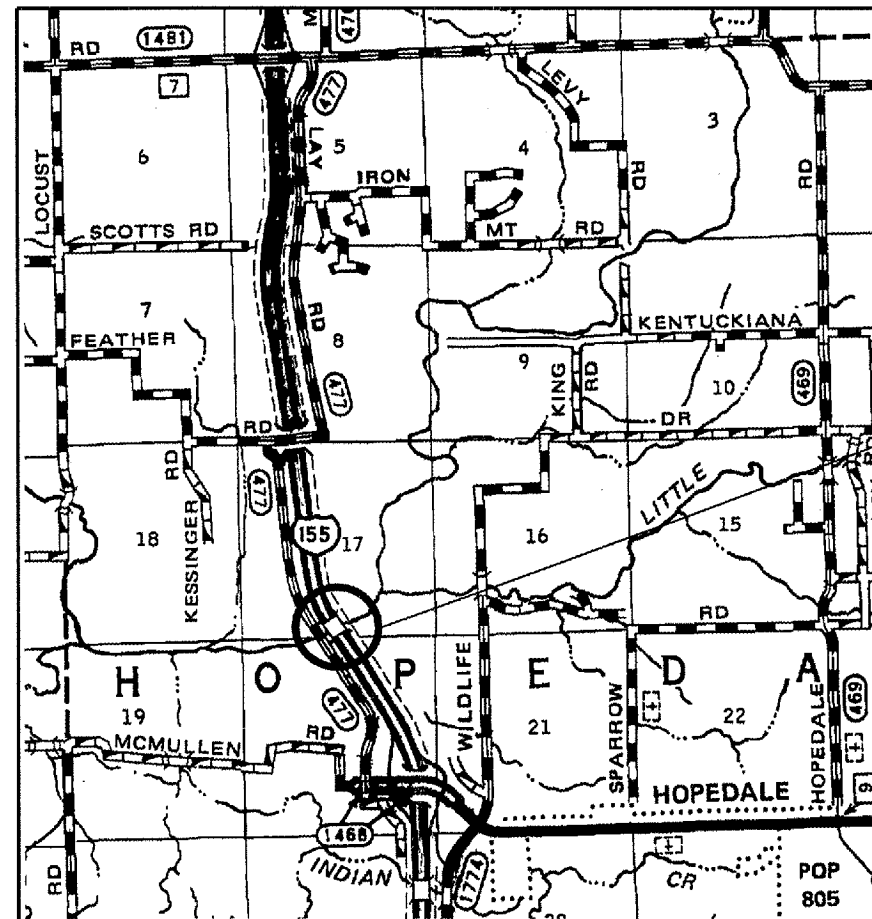
**STANDARDS:**

- 701001-01 701426-02
- 701006-02 702001-05
- 701400-02
- 701406-04 704001-02

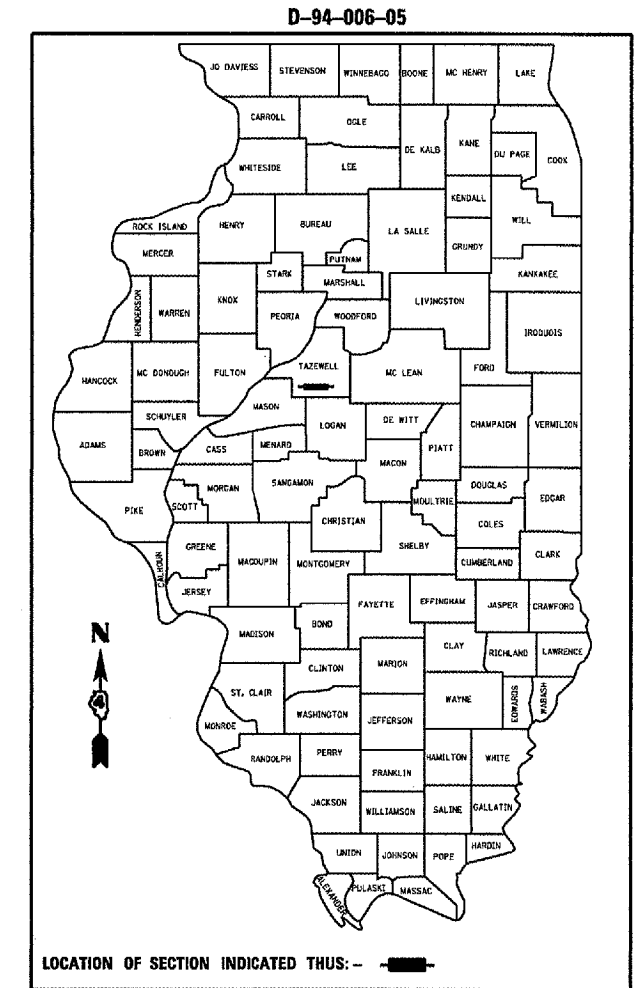


FULL SIZE PLANS HAVE BEEN PREPARED USING STANDARD ENGINEERING SCALES. REDUCED SIZED PLANS WILL NOT CONFORM TO STANDARD SCALES. IN MAKING MEASUREMENTS ON REDUCED PLANS, THE ABOVE SCALES MAY BE USED.

J.U.L.I.E.  
JOINT UTILITY LOCATION INFORMATION FOR EXCAVATION  
1-800-892-0123



LOCATION MAP



PROJECT CONSISTS OF INSTALLATIONS OF DEBRIS ROLLERS UPSTREAM IN FRONT OF CHANNEL PIERS OF SN 090-0100 CARRYING N.B. I-155 OVER THE MACKINAW RIVER



STATE OF ILLINOIS  
DEPARTMENT OF TRANSPORTATION  
DIVISION OF HIGHWAYS

SUBMITTED: March 10, 2005

[Signature]  
DEPUTY DIRECTOR OF HIGHWAYS, REGION ENGINEER

May 13, 2005  
[Signature]  
ENGINEER OF DESIGN AND ENVIRONMENT

May 13, 2005  
[Signature]  
DIRECTOR OF HIGHWAYS, CHIEF ENGINEER

**PRINTED BY THE AUTHORITY  
OF THE STATE OF ILLINOIS**

DESIGNER: CLARK JONES  
PHONE: (309)671-3452

PROJECT ENGINEER: JIM MILLER  
PHONE: (309)671-3451