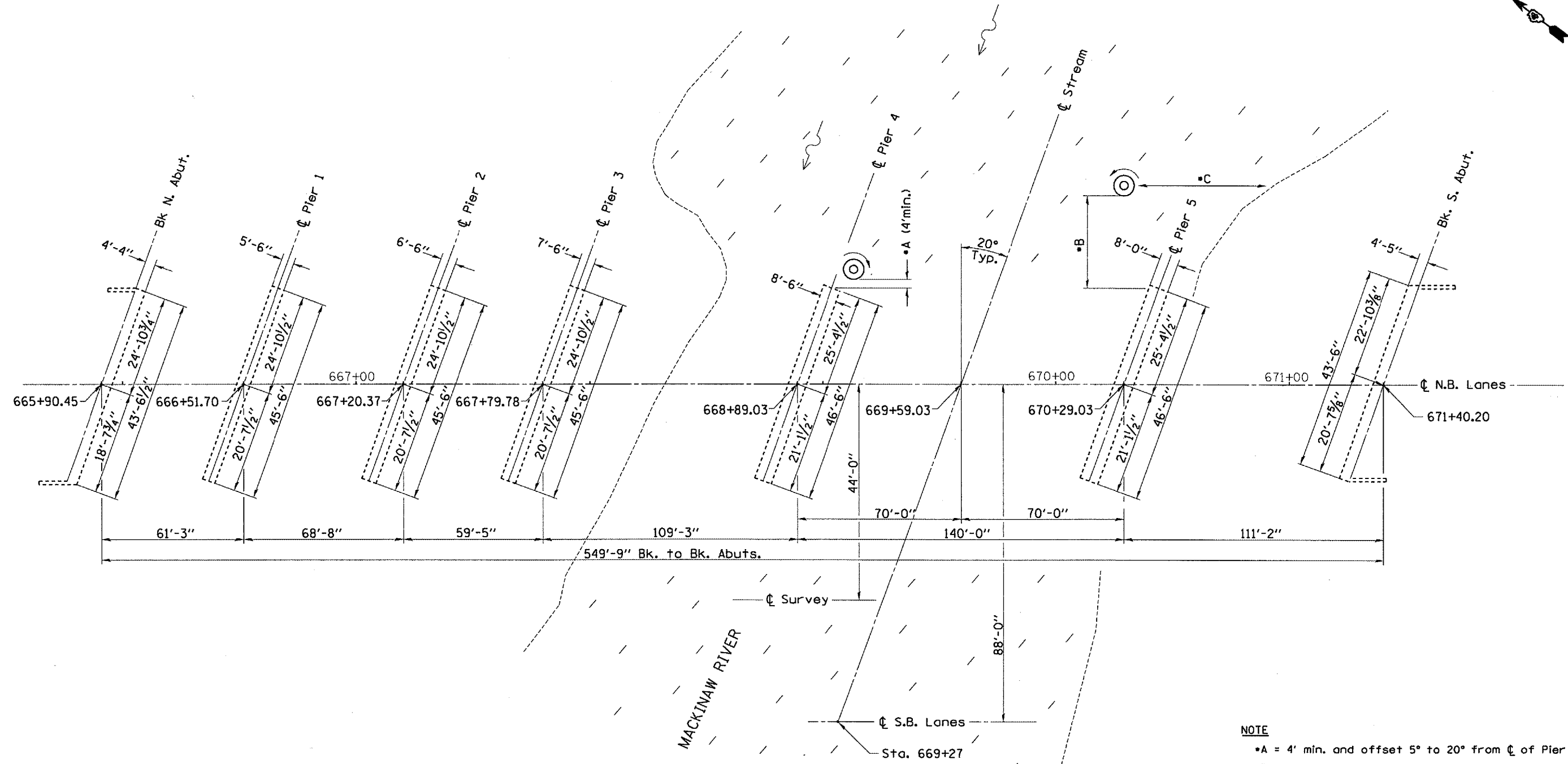


|   |               |                   |              |           |
|---|---------------|-------------------|--------------|-----------|
| F.A.I. RTE.                                     | SECTION       | COUNTY            | TOTAL SHEETS | SHEET NO. |
| 155   | 04 DERRIS RD. | TAZEWELL          | 10           | 8         |
| STA. 665+90.43                                  |               | TO STA. 671+40.20 |              |           |
| FED. ROAD DIST. NO. 4 ILLINOIS FED. AID PROJECT |               |                   |              |           |



**SUBSTRUCTURE LAYOUT**

- NOTE**
- A = 4' min. and offset 5° to 20° from  $\text{C}$  of Pier 4
  - B = 40 to 45' field-determined dimension w/o a pile stabilizer support bracket
  - C = field-determined dimension as per channel meander migration at time of installation
- See sheet 9 for Cylindrical Steel Shell for Cast in place Concrete Piles

**LEGEND**

- DRIFT FIELD
- MOAB C-CLOCKWISE ROTATION

| REVISIONS |      |
|-----------|------|
| NAME      | DATE |
|           |      |
|           |      |
|           |      |
|           |      |
|           |      |
|           |      |
|           |      |
|           |      |
|           |      |
|           |      |

ILLINOIS DEPARTMENT OF TRANSPORTATION

**SUBSTRUCTURE & MOAB LAYOUT**

SCALE: VERT. \_\_\_\_\_  
 HORIZ. \_\_\_\_\_  
 DATE 07-20-2004

DRAWN BY CEJ  
 CHECKED BY \_\_\_\_\_