

68425

F.A.I. RTE.	SECTION	COUNTY	TOTAL SHEETS	SHEET NO.
155	D4DEBRIS.ROLL	TAZEWELL	10	1

STATE OF ILLINOIS
DEPARTMENT OF TRANSPORTATION
DIVISION OF HIGHWAYS

PROPOSED HIGHWAY PLANS

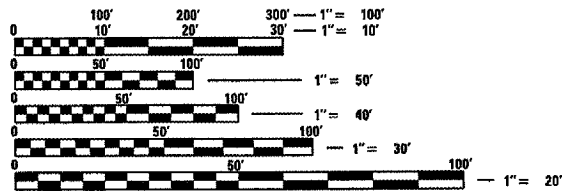
FAI 155 (I-155)
SECTION D4 DEBRIS ROLLER 2005-1
PROJECT S.N. 090-0100
TAZEWELL COUNTY
C-94-006-05

INDEX OF SHEETS:

1. COVER SHEET
2. COMMITMENTS & GENERAL NOTES
3. SUMMARY OF QUANTITIES
4. TYPICAL SECTIONS
5. SCHEDULE OF QUANTITIES
6. PLAN & ELEVATION
7. TRAFFIC STAGING PLAN
8. SUBSTRUCTURE & MOAB LAYOUT
9. PILE DETAIL
10. MOAB DETAIL

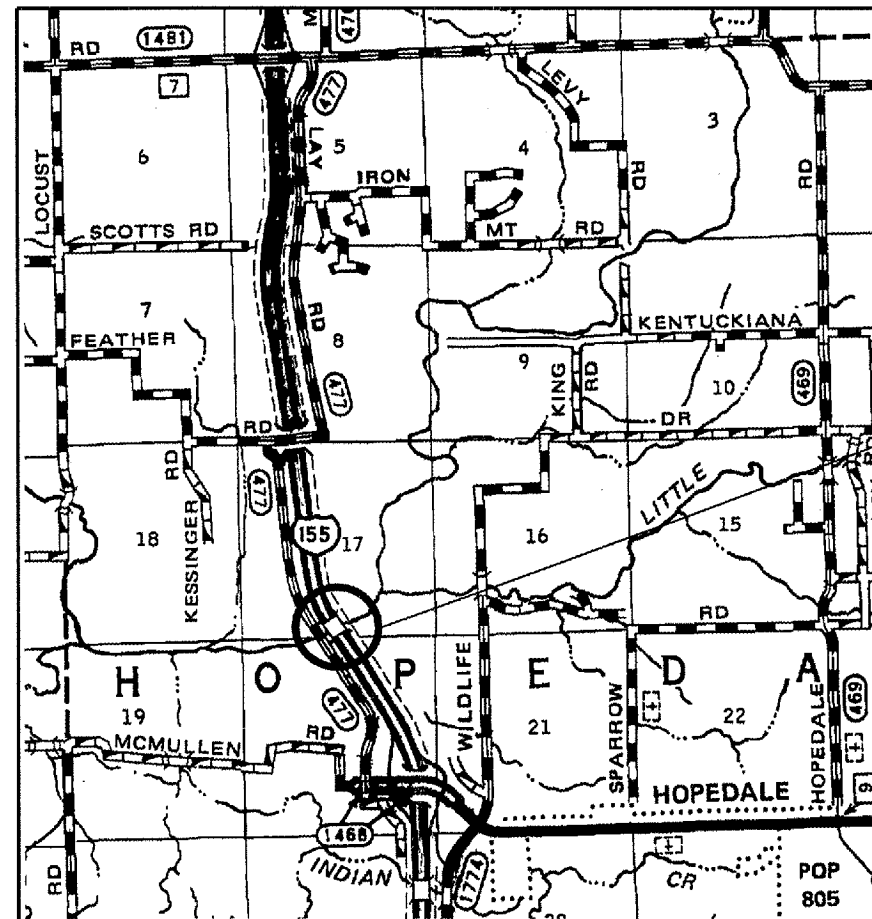
STANDARDS:

- 701001-01 701426-02
- 701006-02 702001-05
- 701400-02
- 701406-04 704001-02

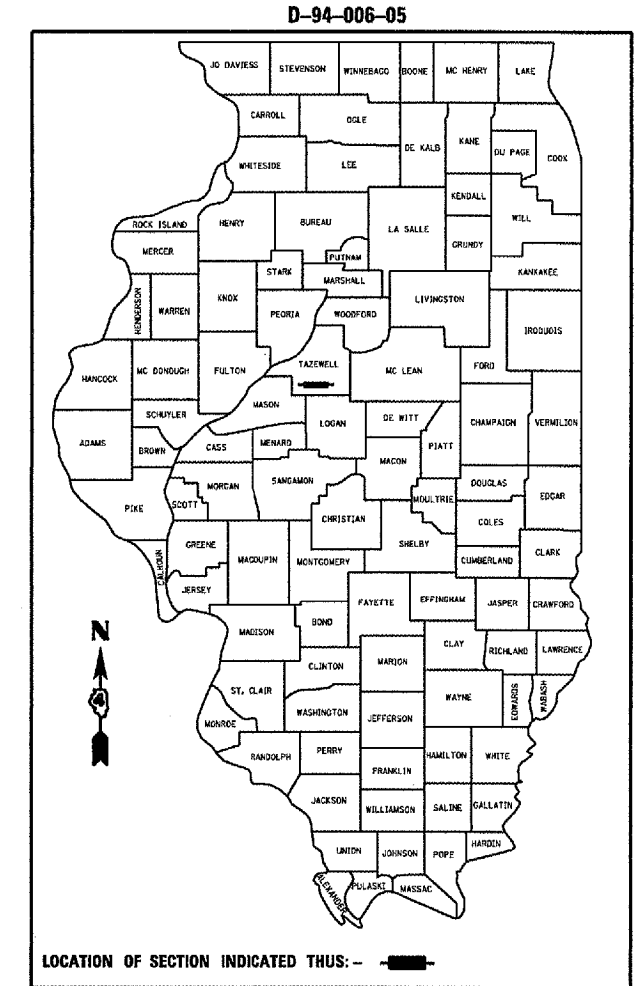


FULL SIZE PLANS HAVE BEEN PREPARED USING STANDARD ENGINEERING SCALES. REDUCED SIZED PLANS WILL NOT CONFORM TO STANDARD SCALES. IN MAKING MEASUREMENTS ON REDUCED PLANS, THE ABOVE SCALES MAY BE USED.

J.U.L.I.E.
JOINT UTILITY LOCATION INFORMATION FOR EXCAVATION
1-800-892-0123



LOCATION MAP



PROJECT CONSISTS OF INSTALLATIONS OF DEBRIS ROLLERS UPSTREAM IN FRONT OF CHANNEL PIERS OF SN 090-0100 CARRYING N.B. I-155 OVER THE MACKINAW RIVER



STATE OF ILLINOIS
DEPARTMENT OF TRANSPORTATION
DIVISION OF HIGHWAYS

SUBMITTED: March 10, 2005

[Signature]
DEPUTY DIRECTOR OF HIGHWAYS, REGION ENGINEER

May 13, 2005
[Signature]
ENGINEER OF DESIGN AND ENVIRONMENT

May 13, 2005
[Signature]
DIRECTOR OF HIGHWAYS, CHIEF ENGINEER

**PRINTED BY THE AUTHORITY
OF THE STATE OF ILLINOIS**

DESIGNER: CLARK JONES
PHONE: (309)671-3452

PROJECT ENGINEER: JIM MILLER
PHONE: (309)671-3451

F.A.I. RTE.	SECTION	COUNTY	TOTAL SHEETS	SHEET NO.
155	04 DEBRIS ROL	TAZEWELL	10	3
STA. 665+90.43		TO STA. 671+40.20		
FED. ROAD DIST. NO. 4		ILLINOIS FED. AID PROJECT		

SUMMARY OF QUANTITIES

100% STATE SAFETY - 2A
TAZEWELL COUNTY

CODE NO.	ITEM	UNIT	RURAL	TOTAL
67100100	MOBILIZATION	LSUM	1.0	1.0
70100305	TRAFFIC CONTROL AND PROTECTION, STANDARD 701400	L sum	1.0	1.0
70100700	TRAFFIC CONTROL AND PROTECTION, STANDARD 701406	L sum	1.0	1.0
X0324059	DEBRIS DEFLECTION SYSTEM, COMPLETE	LSUM	1.0	1.0

PLOT DATE * DATE
FILE NAME * FILE#
PLOT SCALE * SCALE#
REFERENCE * REF#

REVISIONS	
NAME	DATE

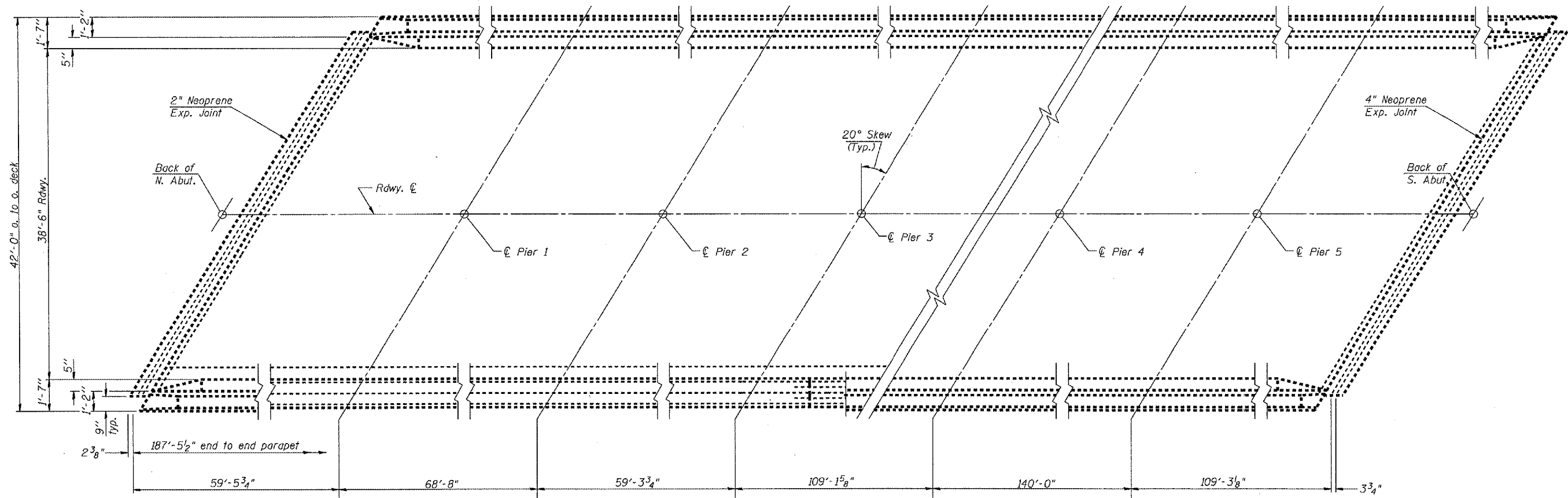
ILLINOIS DEPARTMENT OF TRANSPORTATION

SUMMARY OF QUANTITIES

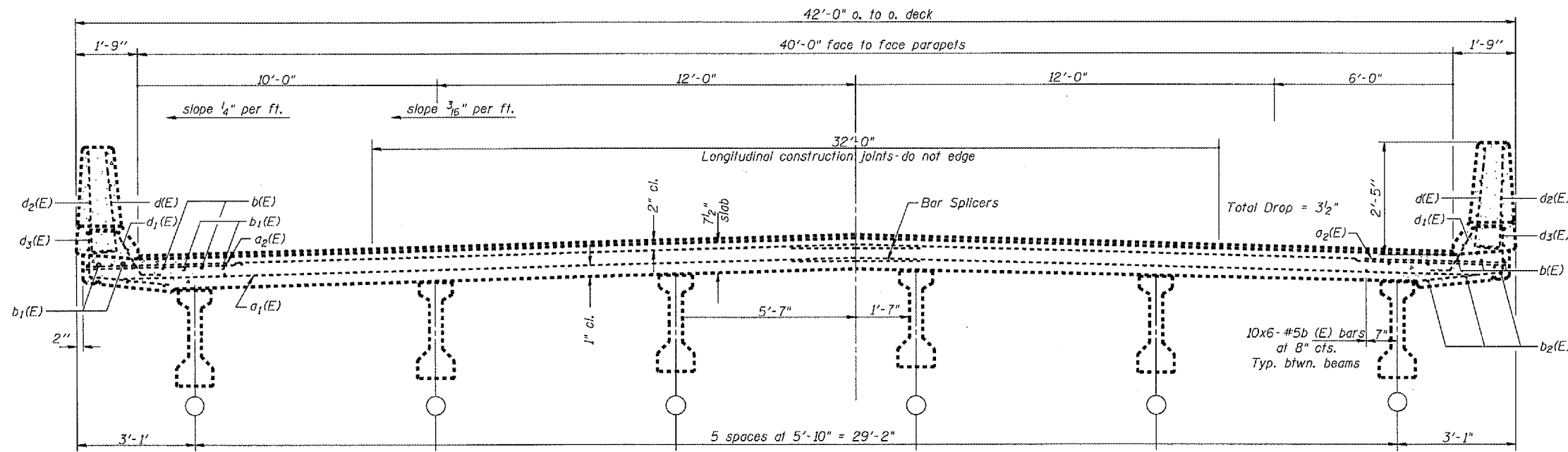
SCALE: VERT.
HORIZ.
DATE 07-13-2004

DRAWN BY CEJ
CHECKED BY

F.A.I. R.T.E.	SECTION	COUNTY	TOTAL SHEETS	SHEET NO.
155	04 DEBRIS RD.	TAZEWELL	10	4
STA. 665+90.43		TO STA. 671+00.20		
FED. ROAD DIST. NO. 4		ILLINOIS FED. AID PROJECT		



PLAN



NEAR PIER

CROSS SECTION
(Looking South)

NEAR MIDSPAN

REVISIONS	
NAME	DATE

ILLINOIS DEPARTMENT OF TRANSPORTATION

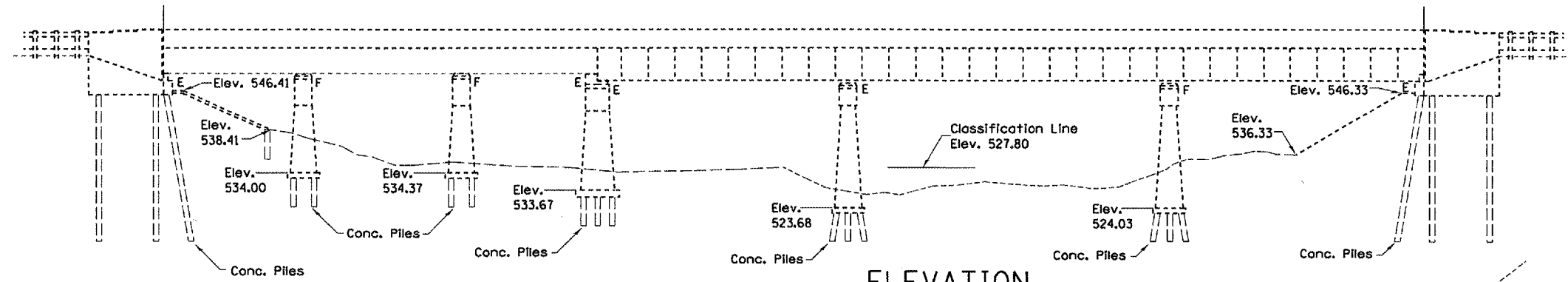
TYPICAL SECTIONS

SCALE: VERT. 1"=4'-0"
HORIZ. 1"=40'-0"
DATE 08-12-2004

DRAWN BY CEJ
CHECKED BY

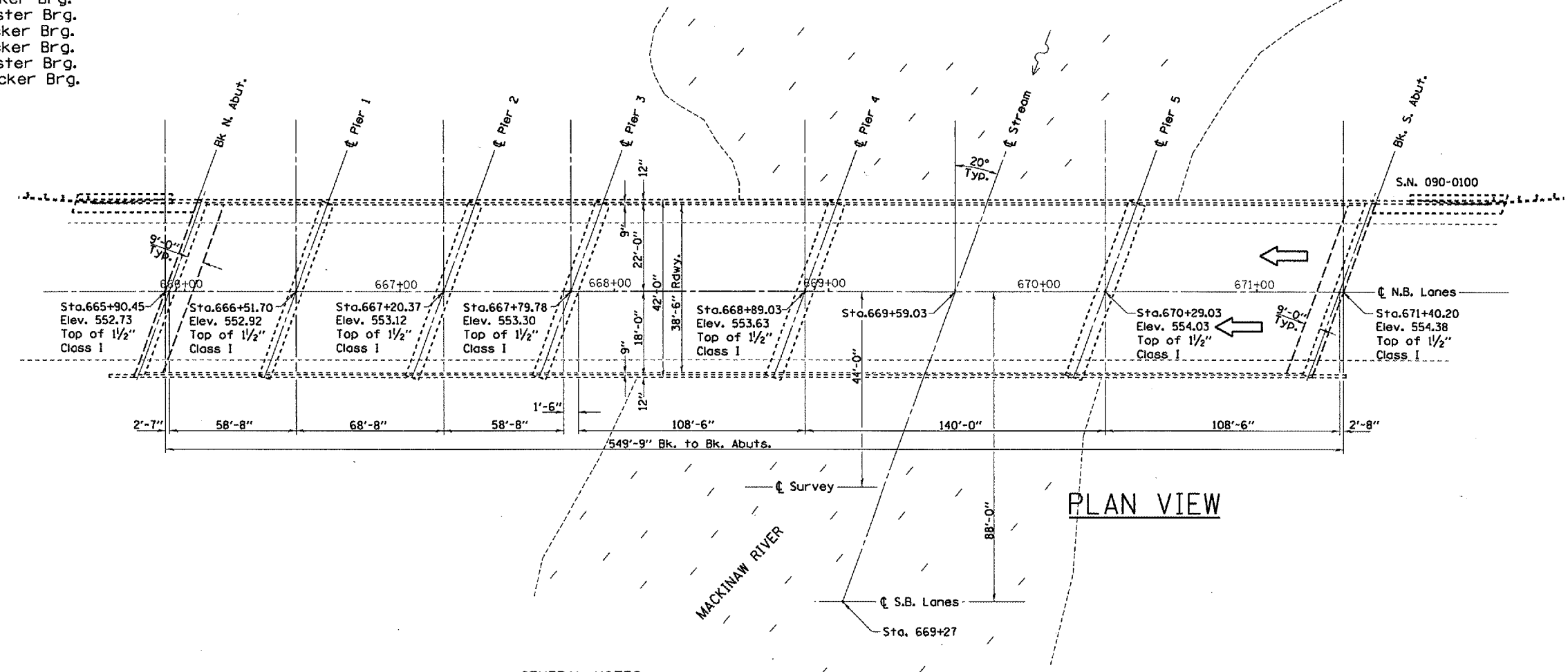
DATE: 08-12-2004
SCALE: 1"=40'-0"
DRAWN BY: CEJ
CHECKED BY: []

F.A.I. RTE.	SECTION	COUNTY	TOTAL SHEETS	SHEET NO.
155	Q4 DEBRIS ROL	TAZEWELL	10	6
STA. 665+90.43		TO STA. 671+40.20		
FED. ROAD DIST. NO. 4 ILLINOIS FED. AID PROJECT				



ELEVATION

NOTE
 N.Abut. = Rocker Brg.
 Pier 1 = Rocker Brg.
 Pier 2 = Bolster Brg.
 Pier 3 = Rocker Brg.
 Pier 4 = Rocker Brg.
 Pier 5 = Bolster Brg.
 S.Abut. = Rocker Brg.



PLAN VIEW

GENERAL NOTES

PLAN DIMENSIONS AND DETAILS RELATIVE TO EXISTING STRUCTURE HAVE BEEN TAKEN FROM EXISTING PLANS AND ARE SUBJECT TO NOMINAL CONSTRUCTION VARIATIONS. IT SHALL BE THE CONTRACTOR'S RESPONSIBILITY TO VERIFY SUCH DIMENSIONS AND DETAILS IN THE FIELD AND MAKE NECESSARY APPROVED ADJUSTMENTS PRIOR TO WORK OR THE ORDERING OF MATERIALS. SUCH VARIATIONS SHALL NOT BE CAUSE FOR ADDITIONAL COMPENSATION FOR A CHANGE IN THE SCOPE OF THE WORK. HOWEVER, THE CONTRACTOR WILL BE PAID FOR THE QUANTITY ACTUALLY FURNISHED AT THE UNIT PRICE BID FOR THE PROJECT.
 DEBRIS DEFLECTION DEVICES ARE TO BE INSTALLED UPSTREAM FROM PIERS P-4 AND P-5.

TOTAL BILL OF MATERIAL

ITEM	UNIT	QUANTITY
DEBRIS DEFLECTION SYSTEM	LSUM	1.0

REVISIONS	
NAME	DATE

ILLINOIS DEPARTMENT OF TRANSPORTATION

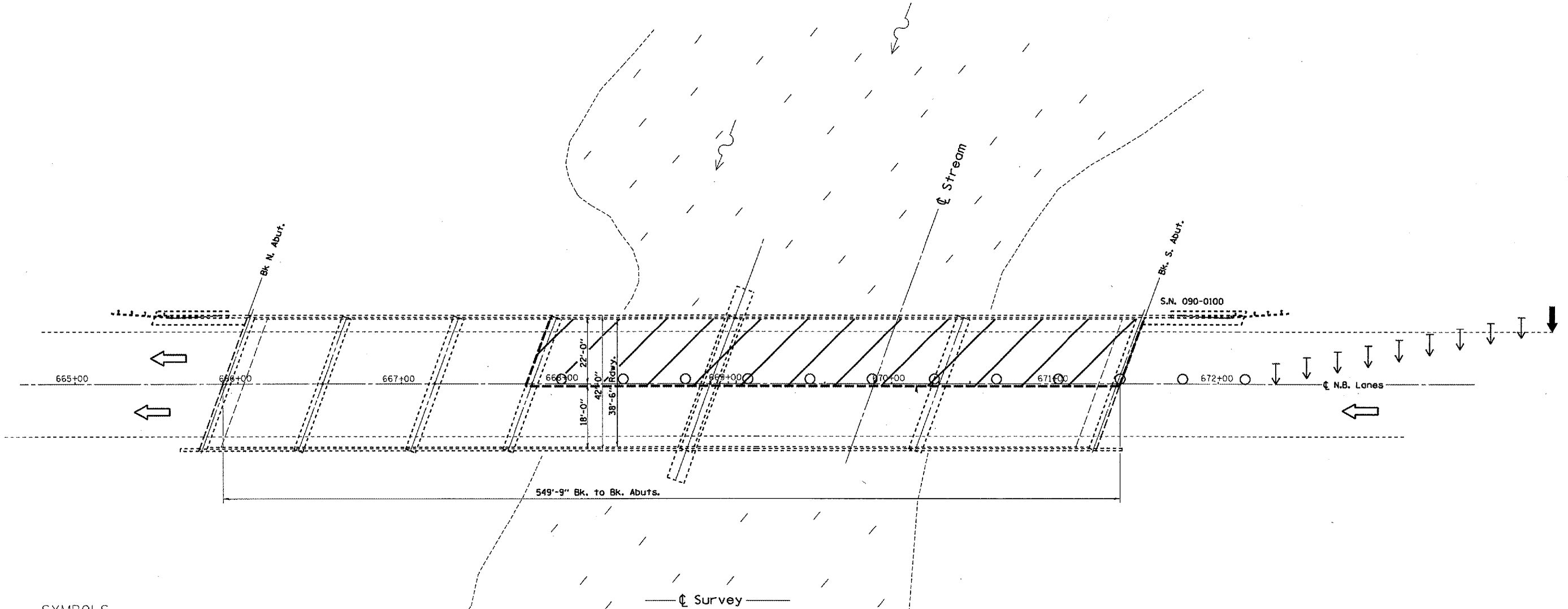
PLAN AND ELEVATION

SCALE: VERT. _____
 HORIZ. _____
 DATE 07-19-2004

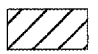






DRAWN BY CEJ
 CHECKED BY _____

DATE
 FILE NAME
 PLOT SCALE
 REFERENCE

F.A.I. RTE.	SECTION	COUNTY	TOTAL SHEETS	SHEET NO.
155	04 DEBRIS BOL.	TAZEWELL	10	7
STA. 665+30.43 TO STA. 671+40.20				
FED. ROAD DIST. NO. 4 ILLINOIS FED. AID PROJECT				



SYMBOLS

-  Work Area
-  Cone, Drum, or Barricade
-  Arrow Board
-  Type II Barricade or Drum
-  Direction Indicator Barricade
-  Sign
-  Flagger w/Traffic Control Sign

NOTE

Refer to Highway Standard 701406-04 and 701400-01 for exact placement of traffic management devices and other clarifications as construction staging symbols and dimensioning were duplicated off of those standards.

REVISIONS	
NAME	DATE

ILLINOIS DEPARTMENT OF TRANSPORTATION

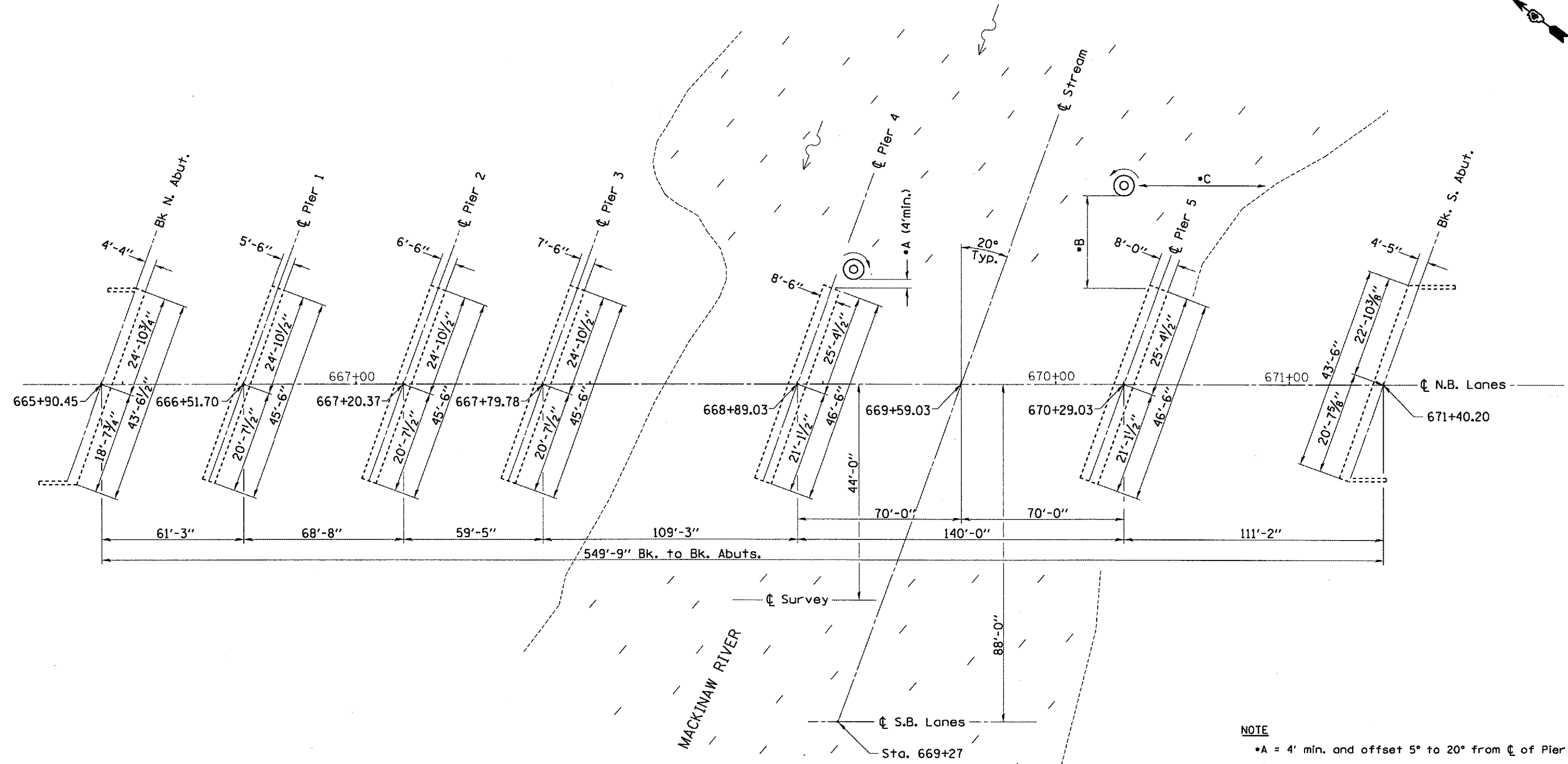
TRAFFIC STAGING PLAN

SCALE: VERT. _____
 HORIZ. _____
 DATE 07-26-2004

DRAWN BY CEJ
 CHECKED BY _____

PLOT DATE : #DATE#
 FILE NAME : #FILE#
 PLOT SCALE : #SCALE#
 REFERENCE : #REF#

F.A.I. RTE.	SECTION	COUNTY	TOTAL SHEETS	SHEET NO.
155	04 DERRIS RD.	TAZEWELL	10	8
STA. 665+90.43		TO STA. 671+40.20		
FED. ROAD DIST. NO. 4 ILLINOIS FED. AID PROJECT				



SUBSTRUCTURE LAYOUT

- NOTE**
- A = 4' min. and offset 5° to 20° from C of Pier 4
 - B = 40 to 45' field-determined dimension w/o a pile stabilizer support bracket
 - C = field-determined dimension as per channel meander migration at time of installation
- See sheet 9 for Cylindrical Steel Shell for Cast in place Concrete Piles

LEGEND

DRIFT FIELD

MOAB C-CLOCKWISE ROTATION

REVISIONS	
NAME	DATE

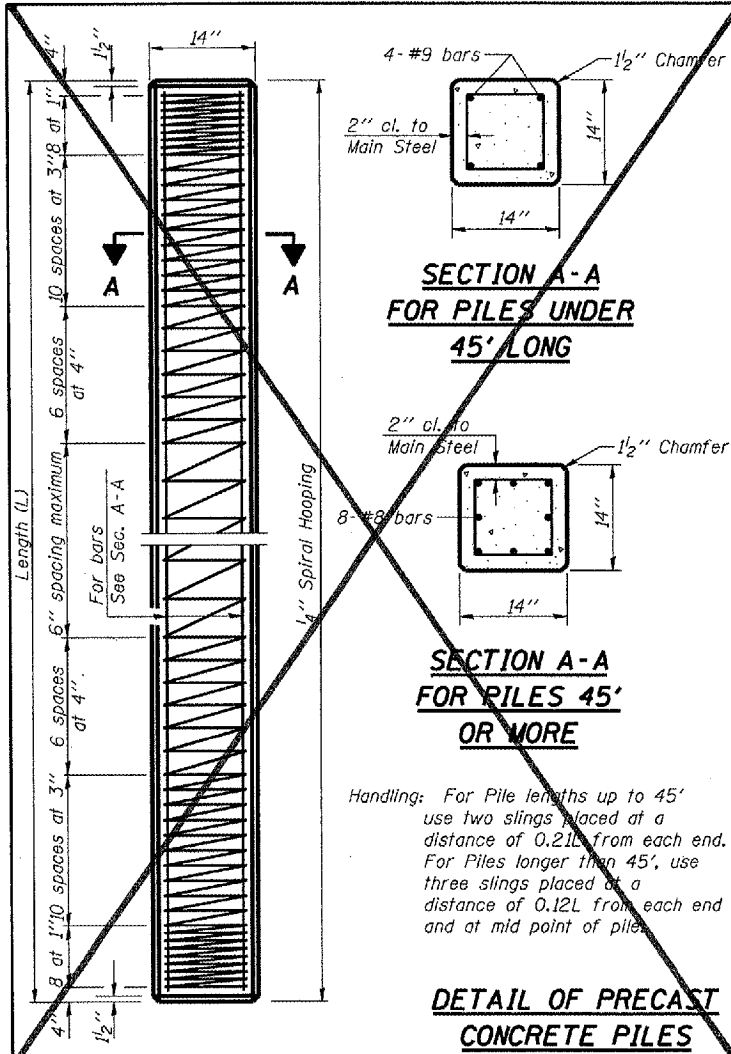
ILLINOIS DEPARTMENT OF TRANSPORTATION

SUBSTRUCTURE & MOAB LAYOUT

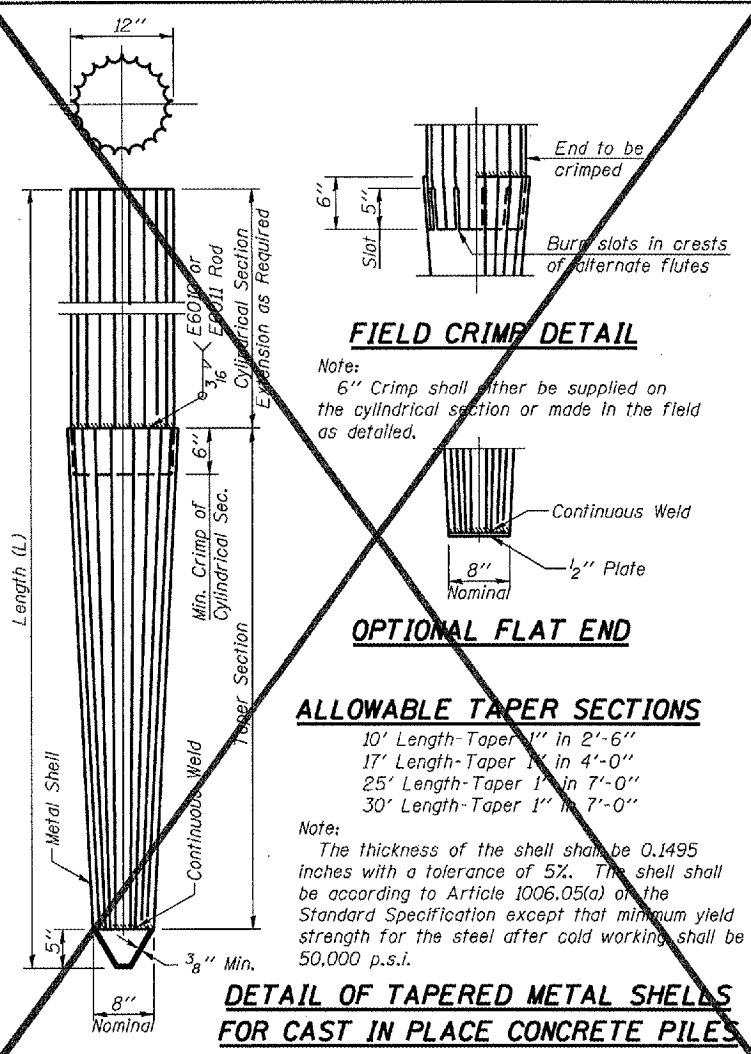
SCALE: VERT. _____
 HORIZ. _____
 DATE 07-20-2004

DRAWN BY CEJ
 CHECKED BY _____

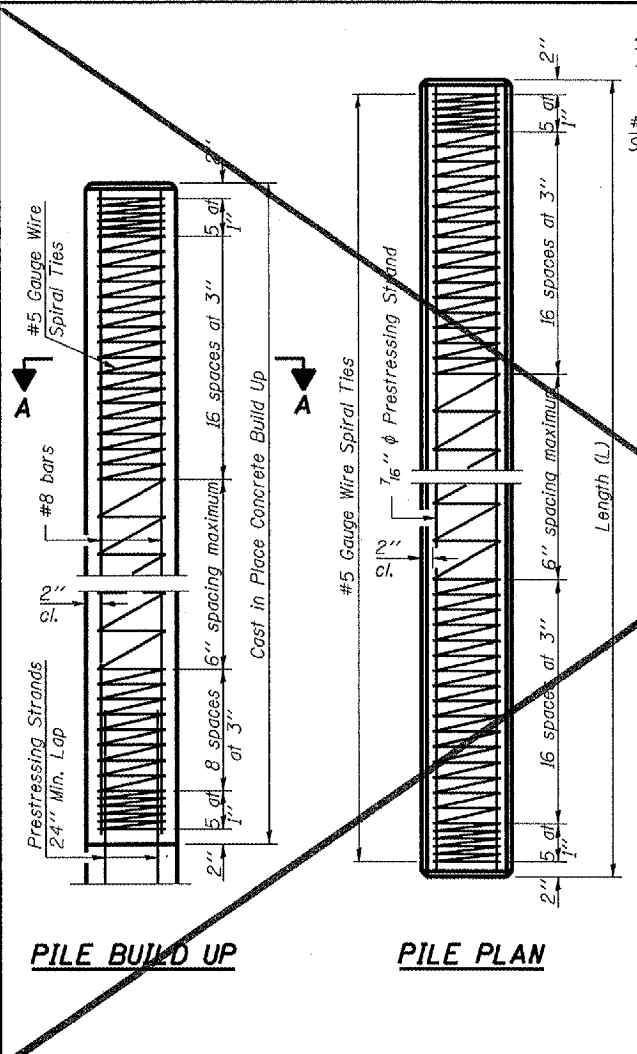
F.A.I. SITE	SECTION	COUNTY	TOTAL SHEETS	SHEET NO.
155	QA DARRIS ROL	LAZEWELL	10	9
STA. 665+90.43		TO STA. 671+40.20		
FED. ROAD DIST. NO. 4 ILLINOIS FED. AID PROJECT				



DETAIL OF PRECAST CONCRETE PILES

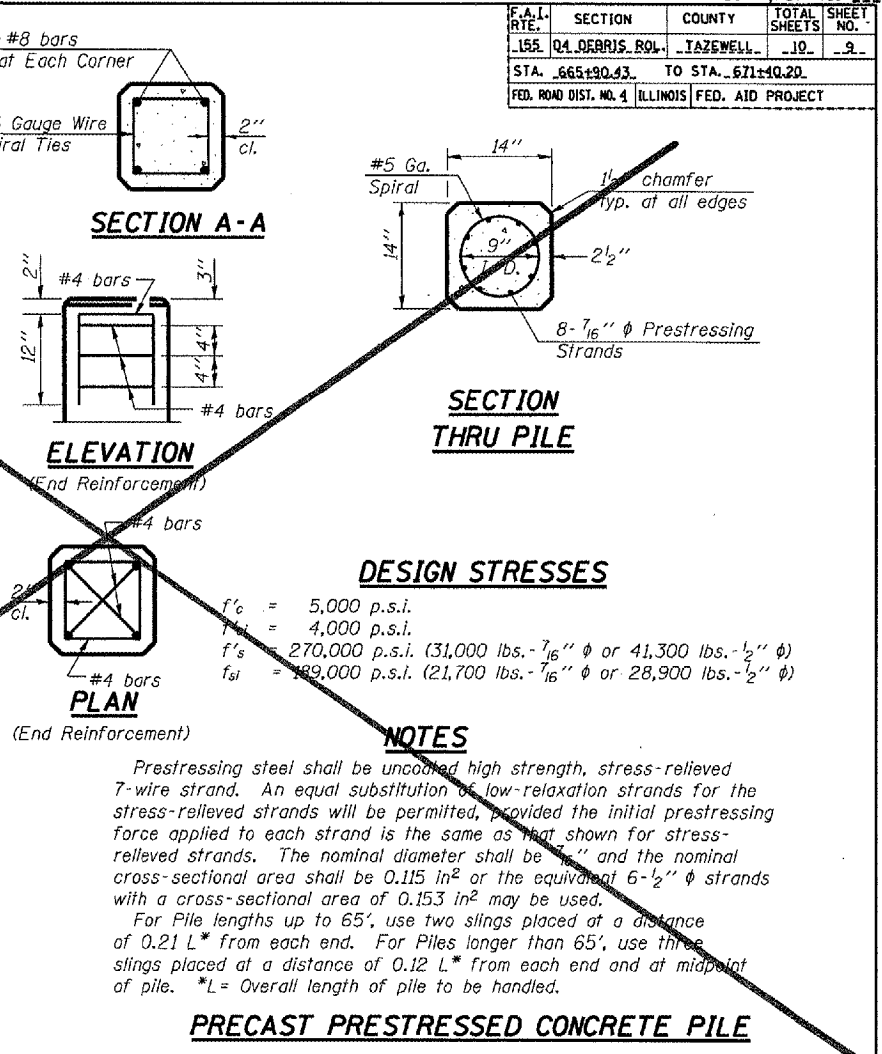


DETAIL OF TAPERED METAL SHELLS FOR CAST IN PLACE CONCRETE PILES

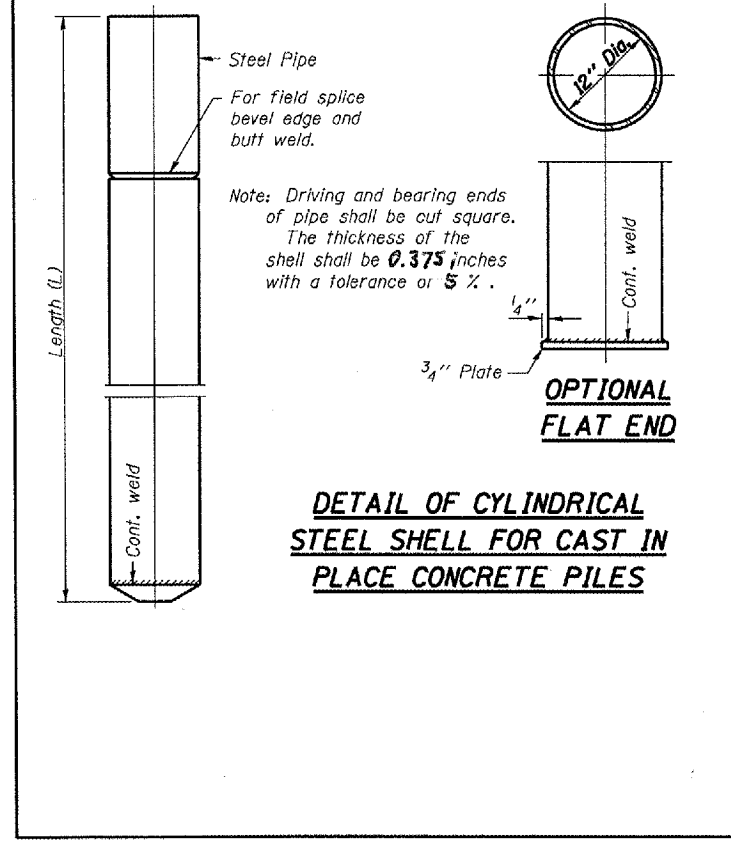


PILE BUILD UP

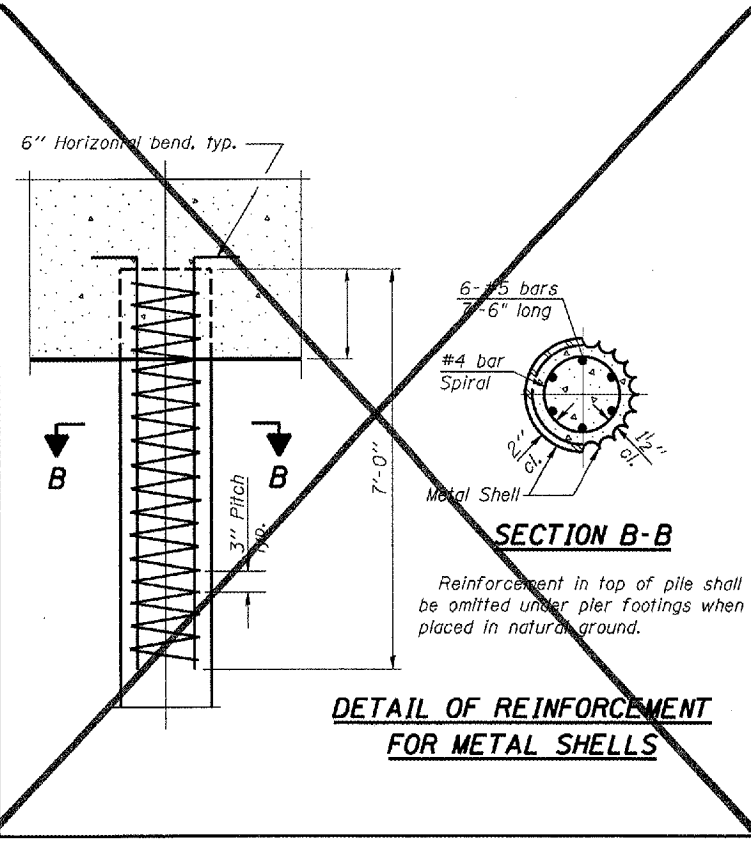
PILE PLAN



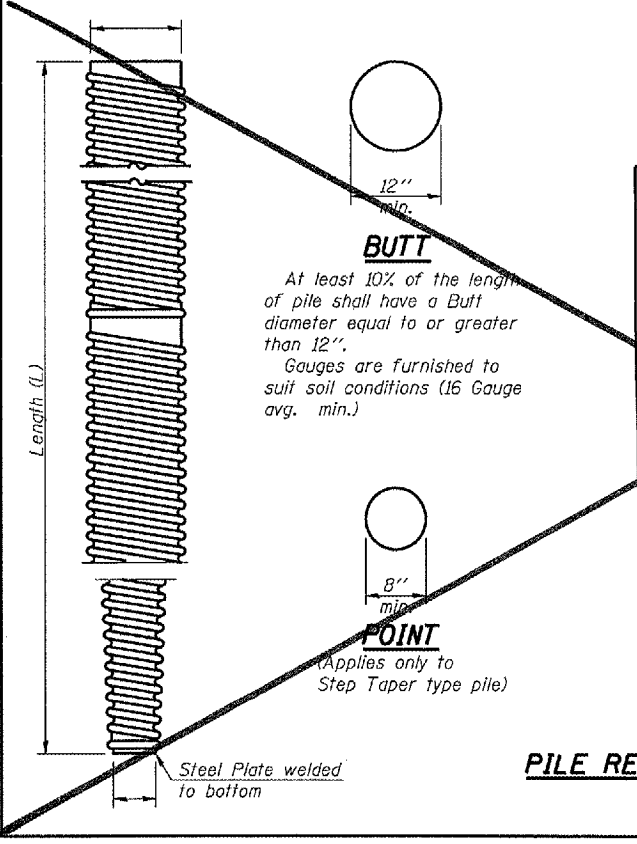
PRECAST PRESTRESSED CONCRETE PILE



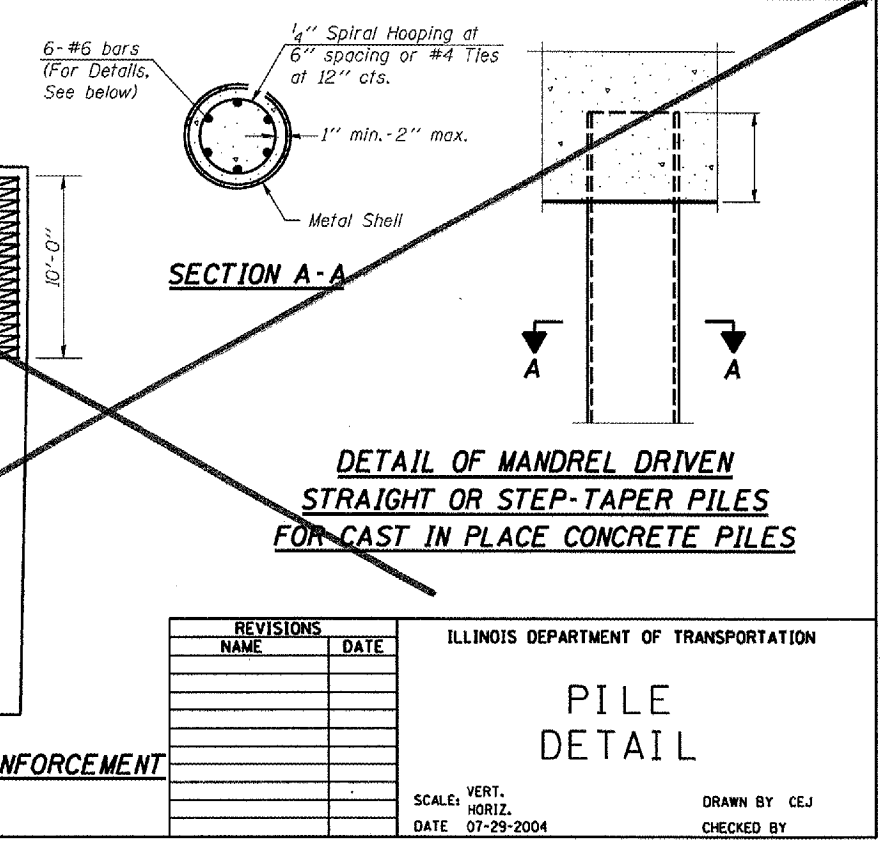
DETAIL OF CYLINDRICAL STEEL SHELL FOR CAST IN PLACE CONCRETE PILES



DETAIL OF REINFORCEMENT FOR METAL SHELLS



PILE REINFORCEMENT



DETAIL OF MANDREL DRIVEN STRAIGHT OR STEP-TAPER PILES FOR CAST IN PLACE CONCRETE PILES

REVISIONS	
NAME	DATE

ILLINOIS DEPARTMENT OF TRANSPORTATION

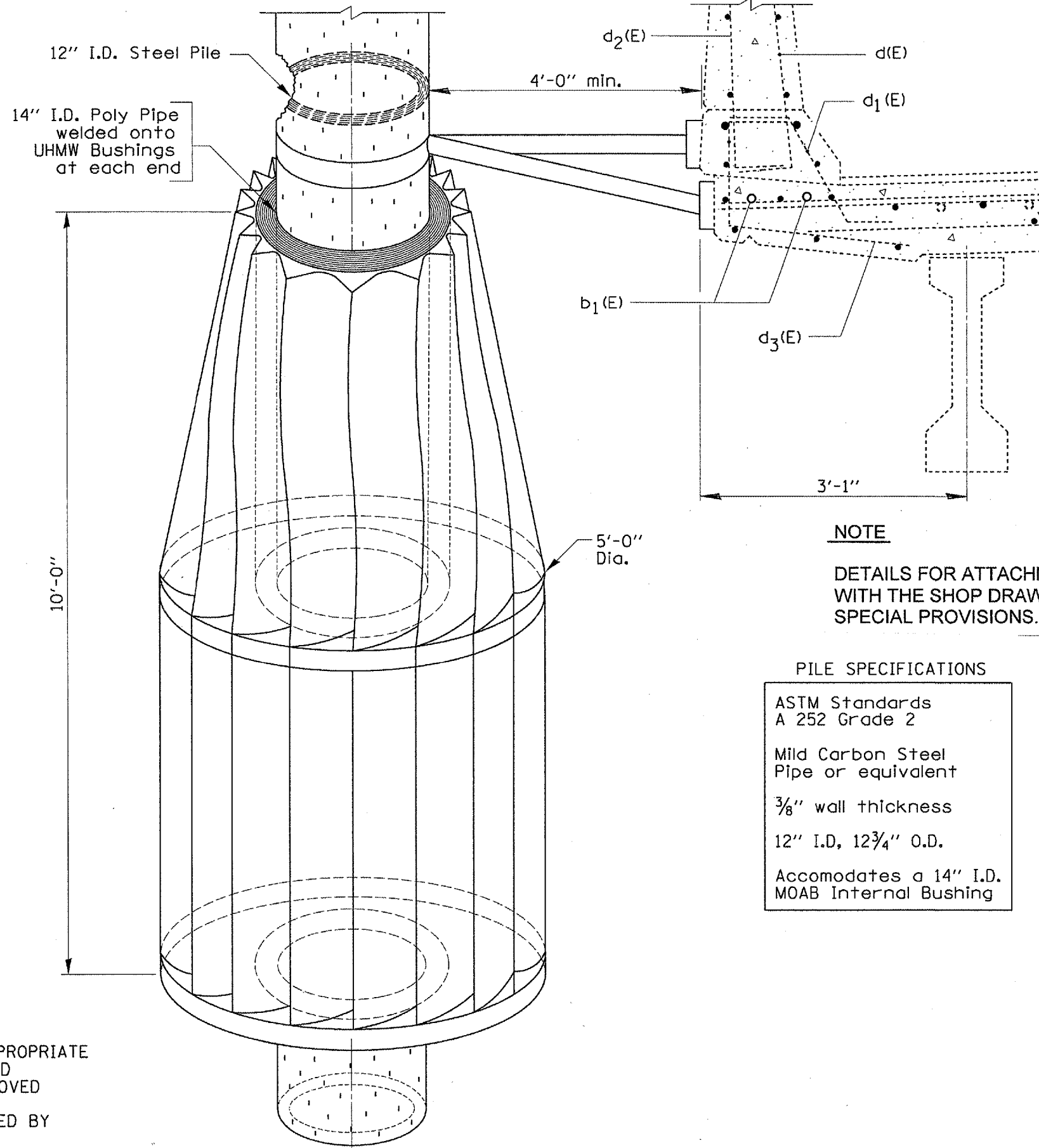
PILE DETAIL

SCALE: VERT. _____
 HORIZ. _____
 DATE 07-29-2004

DRAWN BY CEJ
 CHECKED BY _____

PLT DATE
 FILE NAME
 PLOT SCALE
 REFERENCE

F.A.L. RY.	SECTION	COUNTY	TOTAL SHEETS	SHEET NO.
155	D4 DEBRIS ROL	TAZEWELL	10	10
STA. 665+90.43		TO STA. 671+40.20		
FED. ROAD DIST. NO. 4		ILLINOIS FED. AID PROJECT		



NOTE

DETAILS FOR ATTACHMENT TO THE BRIDGE SHALL BE INCLUDED WITH THE SHOP DRAWING SUBMITTAL REQUIRED BY THE SPECIAL PROVISIONS.

PILE SPECIFICATIONS

ASTM Standards
 A 252 Grade 2
 Mild Carbon Steel
 Pipe or equivalent
 3/8" wall thickness
 12" I.D., 12 3/4" O.D.
 Accommodates a 14" I.D.
 MOAB Internal Bushing

NOTE

STEEL PILING TO BE DRIVEN 25'-0" IN APPROPRIATE LOCATIONS UPSTREAM FROM BRIDGE PIERS AND BACK-FILLED WITH CONCRETE BY STATE-APPROVED CONTRACTOR.
 MOAB AND INSTALLATION ON PILES PROVIDED BY DEBRIS FREE, INC. OJAI, CA.
 LOWER HALF-MOAB DGN. BY ROTONICS MFG. INC.

TO BE INSTALLED
 AT S.N. 090-0100

REVISIONS	
NAME	DATE

ILLINOIS DEPARTMENT OF TRANSPORTATION

**MOAB
 DETAIL**

SCALE: VERT.
 HORIZ.
 DATE 07-27-2004

DRAWN BY CEJ
 CHECKED BY

PLOT DATE = # DATES
 FILE NAME = # FILES
 PLOT SCALE = # SCALES
 REFERENCE = # SHEETS