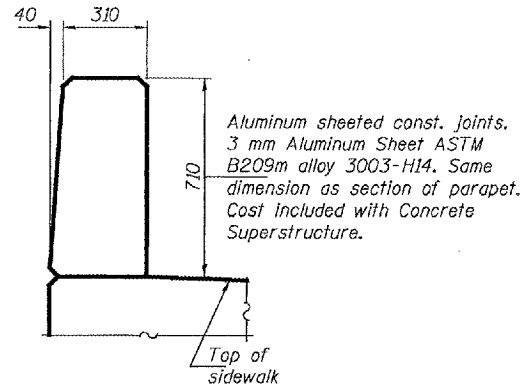


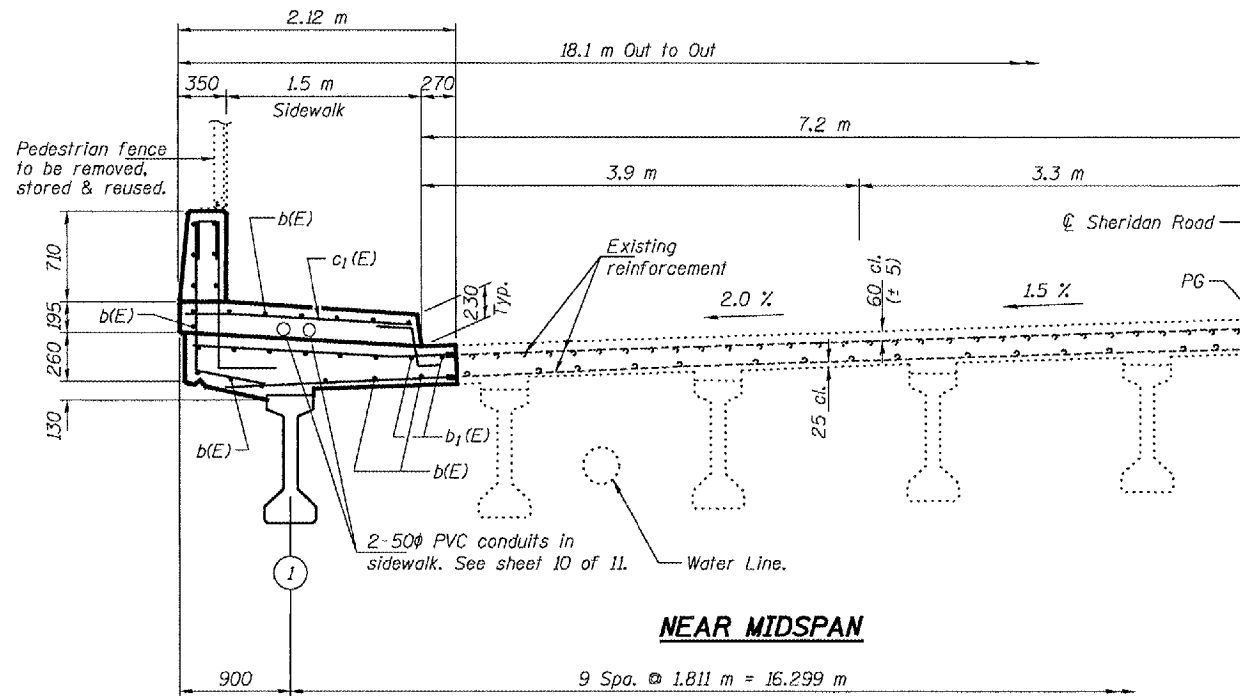
STATE OF ILLINOIS  
DEPARTMENT OF TRANSPORTATION

|                       |          |                   |           |           |
|-----------------------|----------|-------------------|-----------|-----------|
| ROUTE NO.             | SECTION  | COUNTY            | SHEET NO. | SHEET NO. |
|                       |          |                   | 18        | 13        |
| FED. ROAD DIST. NO. 7 | ILLINOIS | FED. AID PROJECT- |           |           |

Contract #68492



**PARAPET JOINT DETAILS**



**NEAR MIDSPAN**

**PARTIAL CROSS SECTION THRU BRIDGE DECK**

Looking North

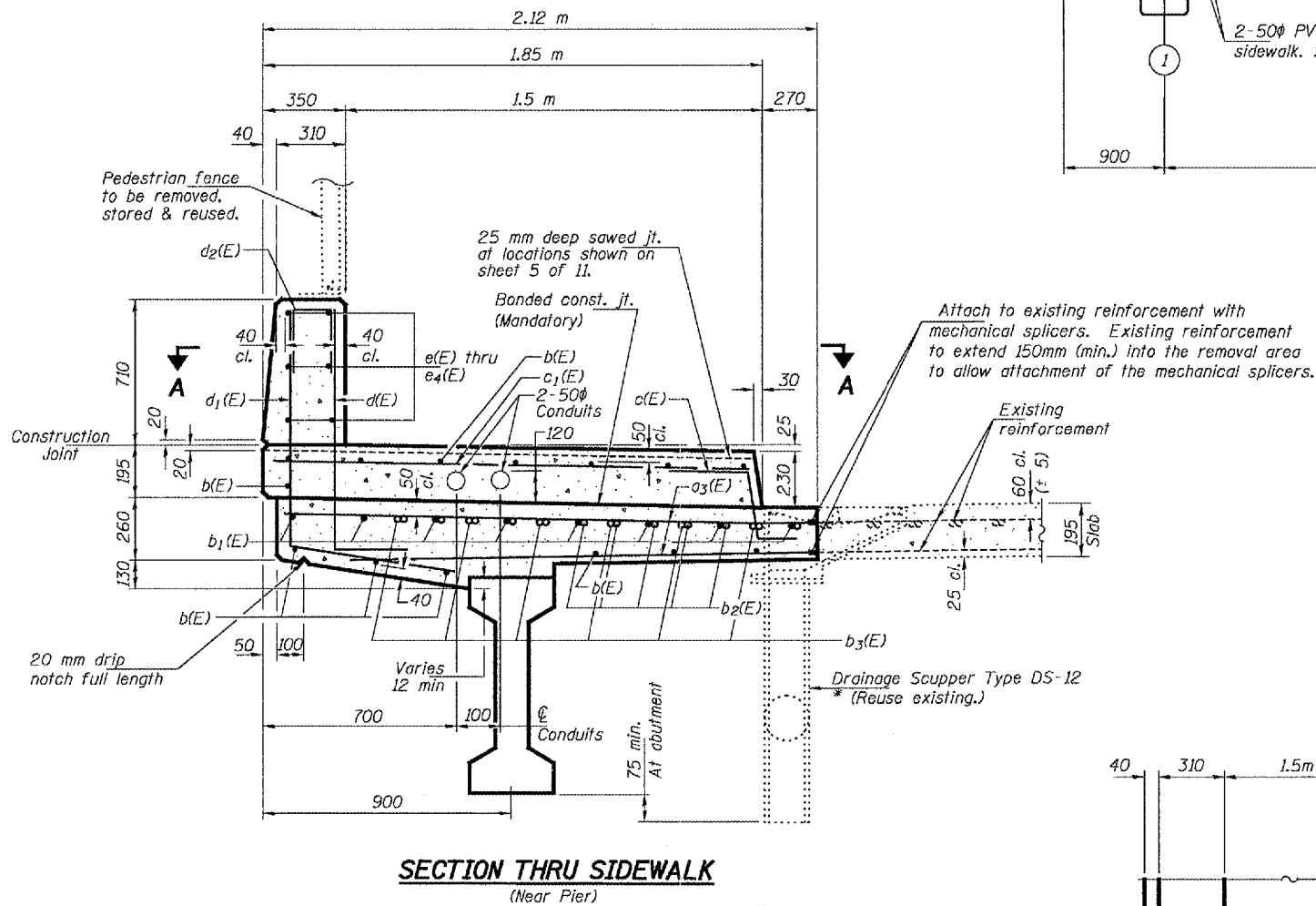


**BAR d<sub>1</sub>(E)**

**BAR d(E)**

**BILL OF MATERIAL**

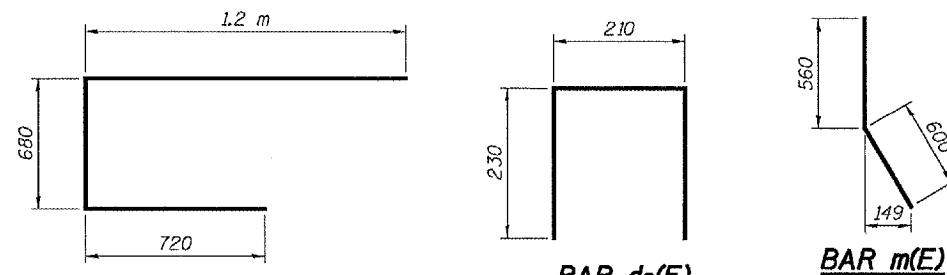
| Bar                              | No. | Size           | Length (m) | Shape |
|----------------------------------|-----|----------------|------------|-------|
| d(E)                             | 1   | 15             | 0.65       | —     |
| a <sub>1</sub> (E)               | 4   | 15             | 2.00       | —     |
| a <sub>2</sub> (E)               | 4   | 20             | 1.22       | —     |
| a <sub>3</sub> (E)               | 244 | 15             | 2.02       | —     |
| b(E)                             | 56  | 15             | 7.60       | —     |
| b <sub>1</sub> (E)               | 24  | 15             | 9.94       | —     |
| b <sub>2</sub> (E)               | 15  | 20             | 6.00       | —     |
| b <sub>3</sub> (E)               | 6   | 15             | 4.50       | —     |
| c(E)                             | 96  | 15             | 0.73       | ┌     |
| c <sub>1</sub> (E)               | 95  | 15             | 1.70       | —     |
| d <sub>1</sub> (E)               | 93  | 20             | 1.32       | —     |
| d <sub>2</sub> (E)               | 30  | 15             | 0.67       | ┐     |
| e(E)                             | 3   | 15             | 2.09       | —     |
| e <sub>1</sub> (E)               | 3   | 15             | 2.01       | —     |
| e <sub>2</sub> (E)               | 24  | 15             | 5.30       | —     |
| e <sub>3</sub> (E)               | 3   | 15             | 3.89       | —     |
| e <sub>4</sub> (E)               | 3   | 15             | 3.81       | —     |
| m(E)                             | 1   | 25             | 1.16       | —     |
| m <sub>1</sub> (E)               | 1   | 20             | 0.90       | —     |
| m <sub>2</sub> (E)               | 2   | 15             | 1.10       | —     |
| x(E)                             | 7   | 20             | 2.60       | ┌     |
| Reinforcement Bars, Epoxy Coated |     | Kg             | 3300       |       |
| Concrete Superstructure          |     | m <sup>3</sup> | 35.5       |       |



**SECTION THRU SIDEWALK**

(Near Pier)

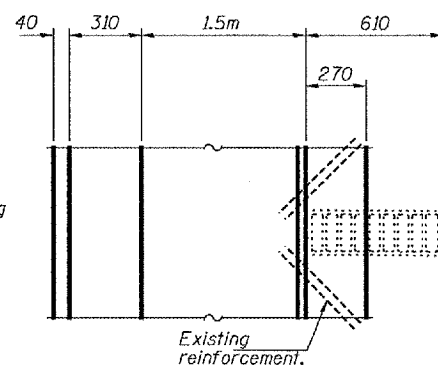
\* The Contractor shall ensure that the scupper is supported at all times during the construction process.



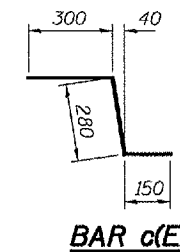
**BAR x(E)**

**BAR d<sub>2</sub>(E)**

**BAR m(E)**



**VIEW A-A**



**BAR c(E)**

Notes:

Reinforcement bars designated (E) shall be epoxy coated. All edges shall have 20 mm chamfer except as noted. Existing reinforcement extending into the removal area shall be cleaned, straightened and incorporated into the new construction. Any reinforcement bars that are damaged during concrete removal shall be replaced with an approved bar splicer or anchorage system. Cost shall be included with Concrete Removal. Cost of conduit is included with Concrete Superstructure.

**SUPERSTRUCTURE DETAILS**  
**SHERIDAN ROAD OVER**  
**FAI ROUTE 74 (I-74)**  
**PEORIA COUNTY**  
**SN 072-0193**

|          |         |
|----------|---------|
| DESIGNED | DAB     |
| CHECKED  | SJB     |
| DRAWN    | baliva  |
| CHECKED  | DAB SJB |

May 10, 2005  
EXAMINED *John A. Morris*  
ENGINEER OF STRUCTURAL SERVICES  
PASSED *Ralph E. Anderson*  
ENGINEER OF BRIDGES AND STRUCTURES