

F.A.I. RTE.	SECTION	COUNTY	TOTAL SHEETS	SHEET NO.
74	(72-8HB-2)I	PEORIA	18	1

DESIGNER: CLARK JONES
PHONE: (309)671-3452

PROJECT ENGINEER: JIM MILLER
PHONE: (309)671-3451

STATE OF ILLINOIS
DEPARTMENT OF TRANSPORTATION

DIVISION OF HIGHWAYS

**PROPOSED
HIGHWAY PLANS**

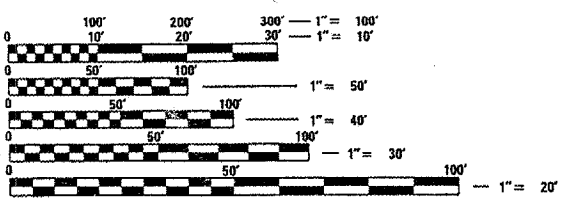
FAI ROUTE 74 (I-74)
SECTION (72-8HB-2)I
PEORIA COUNTY
C-94-088-05

INDEX OF SHEETS:

1. COVER SHEET
2. COMMITMENTS & GENERAL NOTES
3. SUMMARY OF QUANTITIES
4. STRUCTURE CROSS SECTIONS
5. SCHEDULE OF QUANTITIES
6. PLAN AND ELEVATION
7. CONSTRUCTION & TRAFFIC CONTROL
- 8~18. REPAIR & REPLACEMENT DETAILS

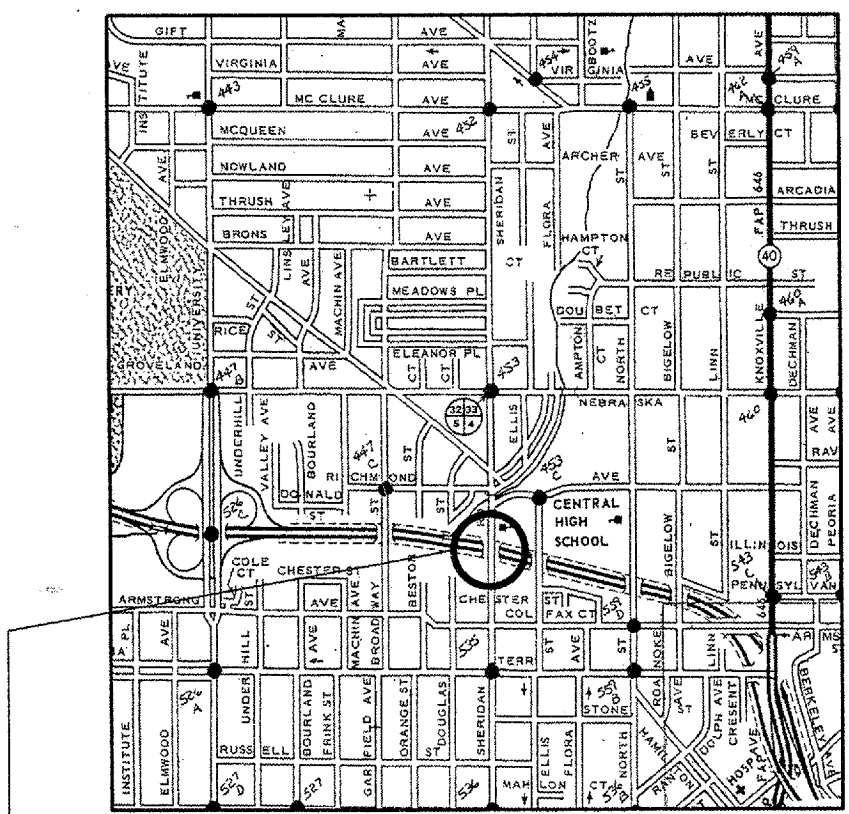
STANDARDS:

- 701201-02 701402-05
- 701206-01 701406-04
- 701400-02 704001-02



FULL SIZE PLANS HAVE BEEN PREPARED USING STANDARD ENGINEERING SCALES. REDUCED SIZED PLANS WILL NOT CONFORM TO STANDARD SCALES. IN MAKING MEASUREMENTS ON REDUCED PLANS, THE ABOVE SCALES MAY BE USED.

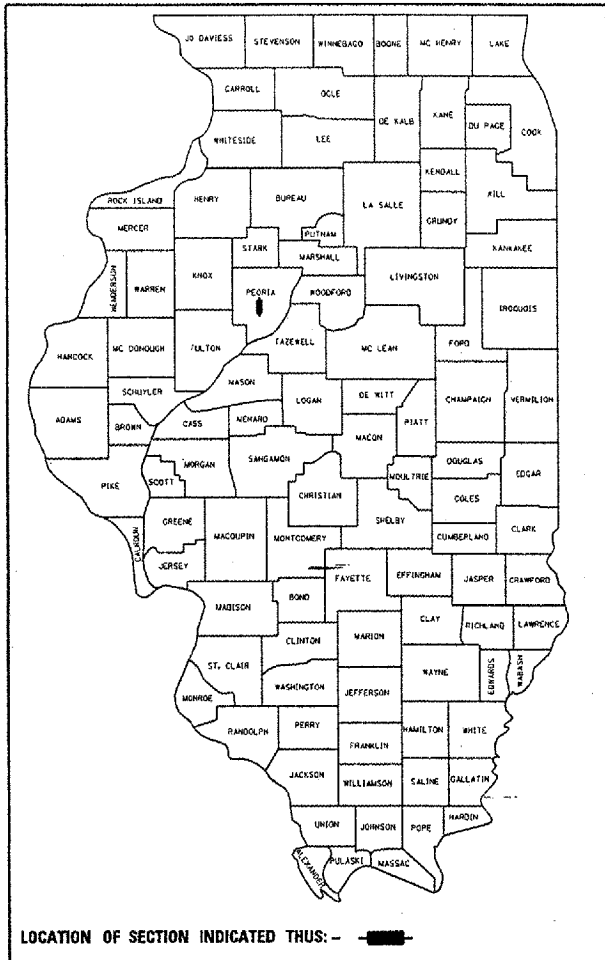
J.U.L.I.E.
JOINT UTILITY LOCATION INFORMATION FOR EXCAVATION
1-800-892-0123



LOCATION MAP

THE PROPOSED PROJECT CONSISTS OF BEAM REPLACEMENT FOR DAMAGE DONE TO NEW STRUCTURE (SNO72-0193) CARRYING SHERIDAN RD. OVER I-74 IN PEORIA.

D-94-074-05



LOCATION OF SECTION INDICATED THUS: -



STATE OF ILLINOIS
DEPARTMENT OF TRANSPORTATION
DIVISION OF HIGHWAYS

SUBMITTED April 1, 2005
[Signature]
DEPUTY DIRECTOR OF HIGHWAYS, REGION ENGINEER

May 13, 2005
[Signature]
ENGINEER OF DESIGN AND ENVIRONMENT

May 13, 2005
[Signature]
DIRECTOR OF HIGHWAYS, CHIEF ENGINEER

**PRINTED BY THE AUTHORITY
OF THE STATE OF ILLINOIS**

F.A.T. RITE	SECTION	COUNTY	TOTAL SHEETS	SHEET NO.
74	(72-8HB-2)	PEORIA	18	3
STA. 146+204.55		TO STA. 149+904.55		
FED. ROAD DIST. NO. 4		ILLINOIS FED. AID PROJECT		

SUMMARY OF QUANTITIES

100% MCHD SAFETY-2A
PEORIA COUNTY

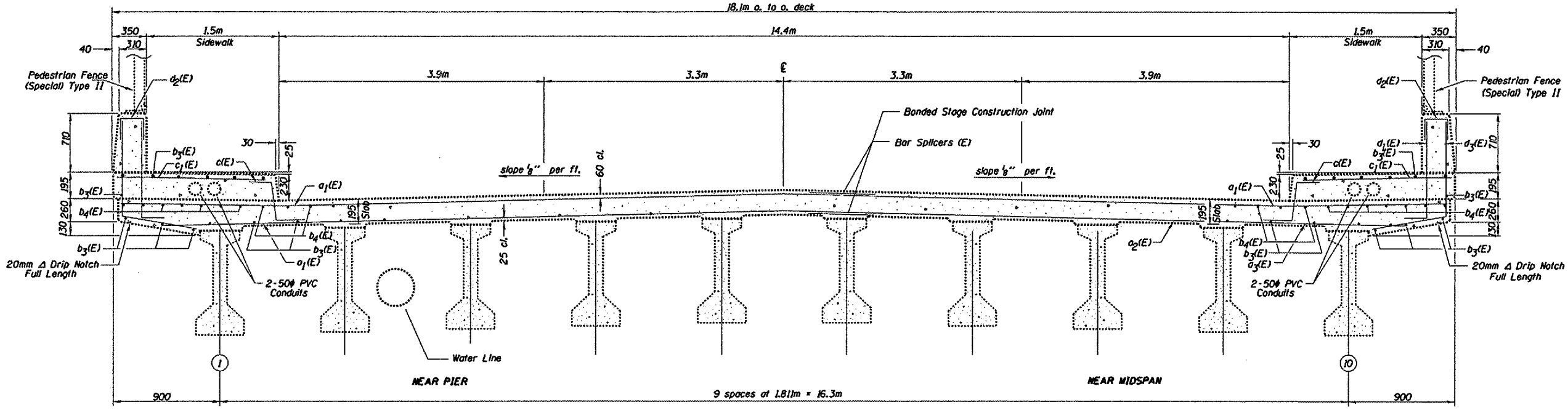
CODE NO.	ITEM	UNIT	URBAN	TOTAL
50104830	REMOVAL OF EXISTING CONCRETE I-BEAM	EACH	1.0	1.0
67100100	MOBILIZATION	L.SUM	1.0	1.0
70100205	TRAFFIC CONTROL AND PROTECTION, STANDARD 701401	EACH	1.0	1.0
70100207	TRAFFIC CONTROL AND PROTECTION, STANDARD 701402	EACH	1.0	1.0
70100307	TRAFFIC CONTROL AND PROTECTION, STANDARD 701400	EACH	2.0	2.0
* M7030320	PAVEMENT MARKING TAPE, TYPE I 100MM	M	60	60
M7040100	TEMPORARY CONCRETE BARRIER	M	60	60
M4205200	PROTECTIVE COAT	SQ.M	87	87
M5010240	CONCRETE REMOVAL	CU.M	35.5	35.5
M5030360	CONCRETE SUPERSTRUCTURE	CU.M	35.5	35.5
M5041372	FURNISHING AND ERECTING PPC I-BEAMS, 1372 MM	M	28.6	28.6
M5080205	REINFORCEMENT BARS, EPOXY COATED	KG	3300	3300
MZ047300	PROTECTIVE SHIELD	SQ.M	100	100
X0321781	MECHANICAL SPLICER	EACH	292	292
Δ Z0030240	IMPACT ATTENUATOR TEMPORARY NRD TL2	EACH	1.0	1.0

Δ SFTY-3N
* SPECIALTY ITEM

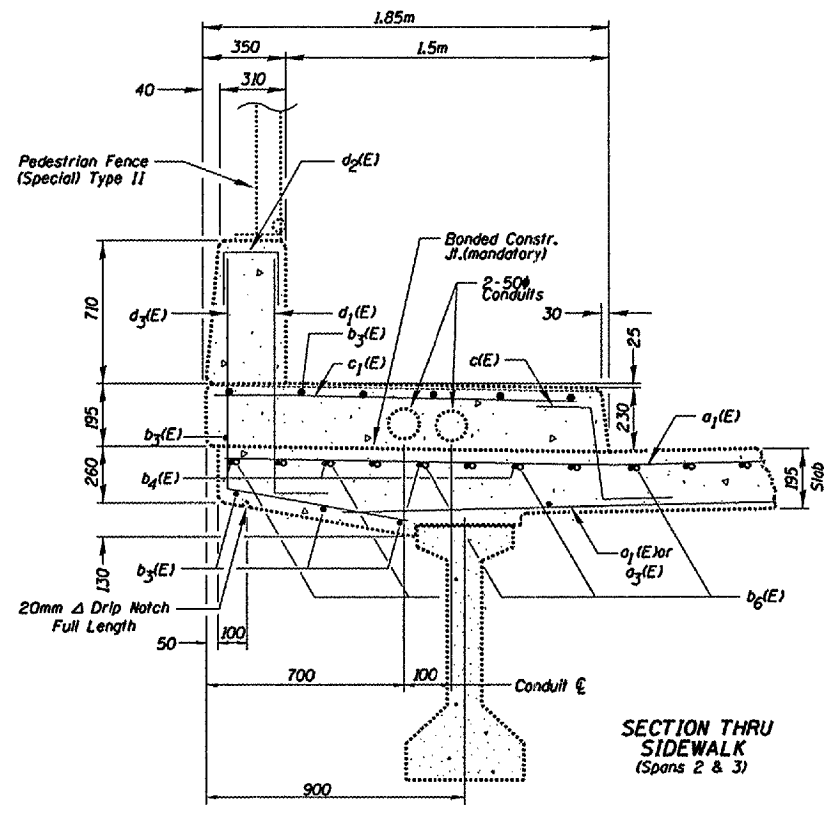
REVISIONS		ILLINOIS DEPARTMENT OF TRANSPORTATION
NAME	DATE	
		<p>SUMMARY OF QUANTITIES</p> <p>SCALE: VERT. DRAWN BY CEJ HORIZ. CHECKED BY DATE 03-15-2005</p>

PLOT DATE: 03-15-2005
 FILE NAME: S:\COURT\15101418-10-10-05 RESURFACING\15101418-10-10-05
 PLOT SCALE: 1/8"=1'-0"
 REFERENCE: SHEET 3

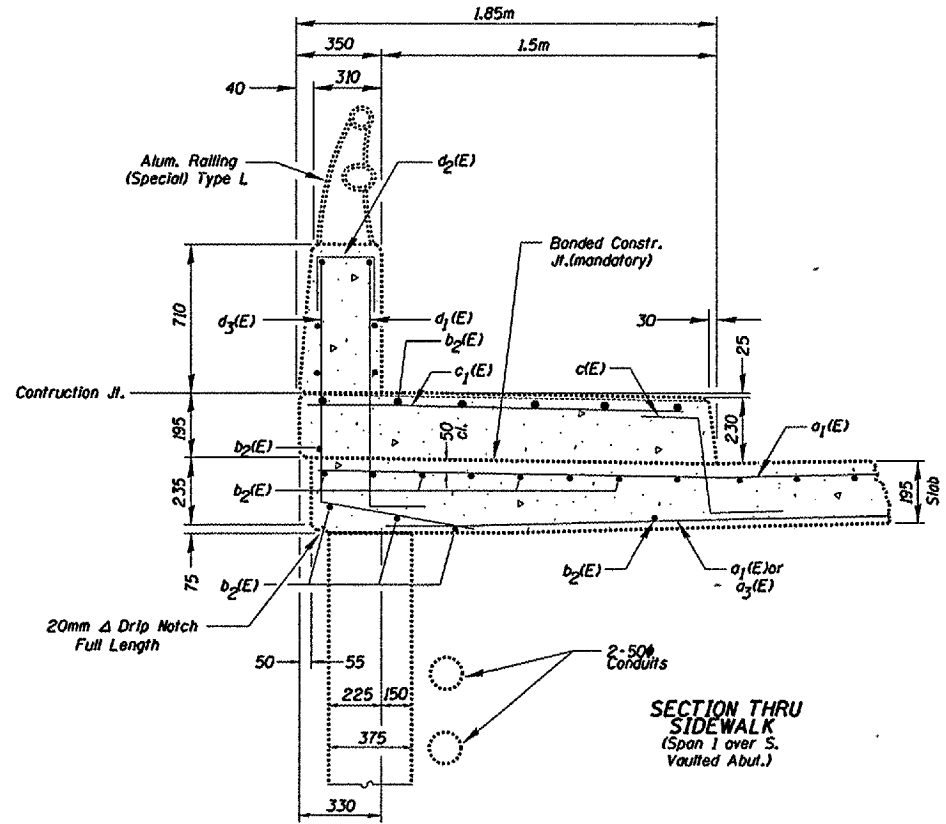
F.A.I. RTE.	SECTION	COUNTY	TOTAL SHEETS	SHEET NO.
74	(72-8HB-2)	PEORIA	18	4
STA. 146+204.55 TO STA. 149+904.55		ILLINOIS FED. AID PROJECT		



CROSS SECTION THRU BRIDGE DECK
(Looking North)



SECTION THRU SIDEWALK
(Spans 2 & 3)



SECTION THRU SIDEWALK
(Span 1 over S. Vaulted Abut.)

REVISIONS	
NAME	DATE

ILLINOIS DEPARTMENT OF TRANSPORTATION

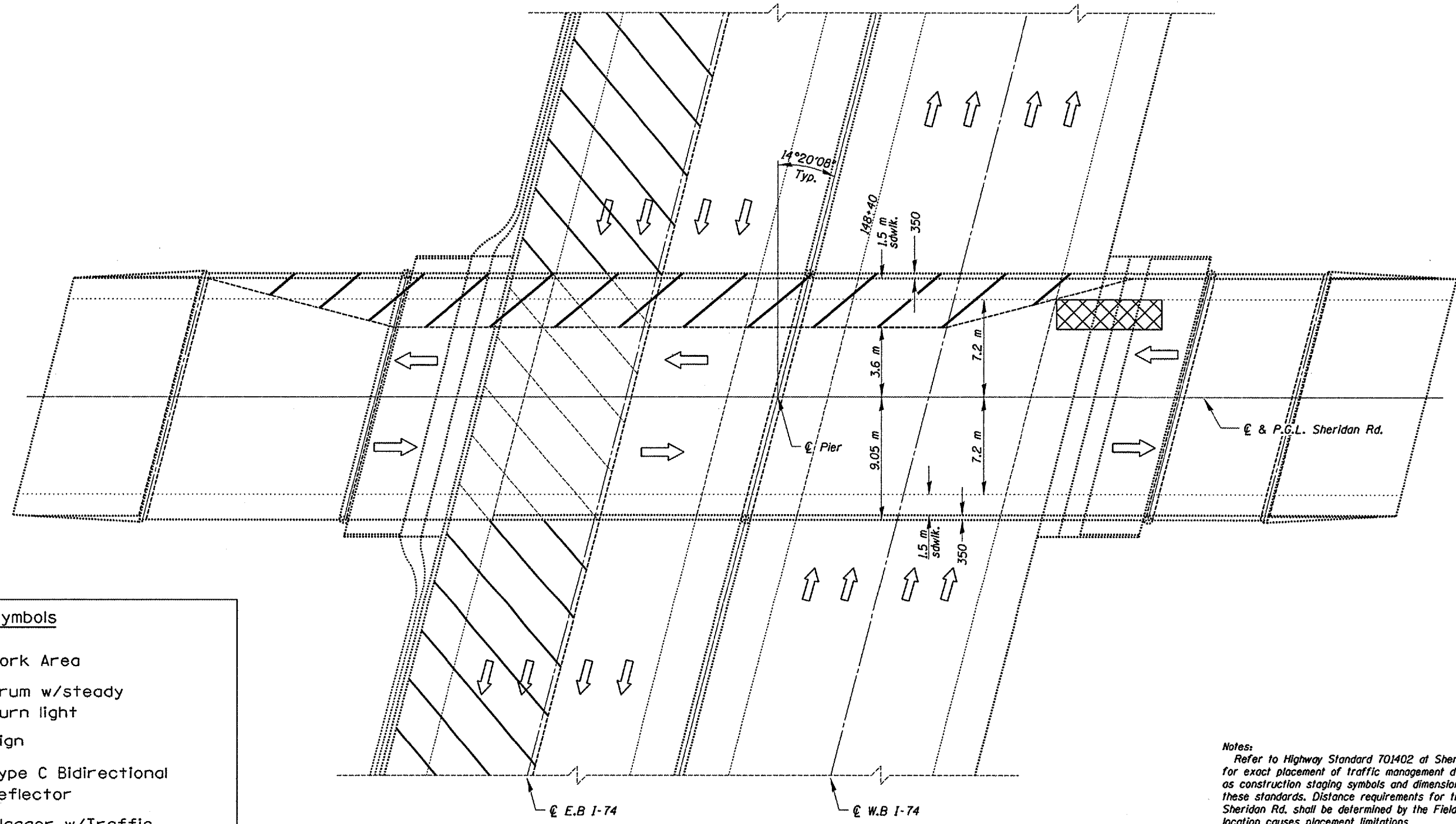
STRUCTURE CROSS SECTIONS

SCALE: VERT. HORIZ. DATE: 03-15-2005

DRAWN BY: CEJ
CHECKED BY:

PLOT DATE: 03-15-2005
 FILE NAME: S:\CONTRACTS\74\74-8HB-2\STRUCTURE\SECTION\SECTION.DWG
 PLOT SCALE: 1/8"=1'-0"
 REFERENCE: SHEET 4 OF 18

F.A.I. RTE.	SECTION	COUNTY	TOTAL SHEETS	SHEET NO.
74	(72-8HB-2)1	PEORIA	18	6
STA. 146+204.55		TO STA. 149+904.55		
FED. ROAD DIST. NO. 4		ILLINOIS FED. AID PROJECT		



PLAN VIEW

Symbols

- Work Area
- Drum w/steady burn light
- Sign
- Type C Bidirectional reflector
- Flagger w/Traffic Control Sign
- Temporary Concrete Barrier
- Impact Attenuator

Notes:
 Refer to Highway Standard 701402 at Sheridan Rd. and 701401 at I-74 for exact placement of traffic management devices and other clarifications as construction staging symbols and dimensioning were duplicated off of these standards. Distance requirements for traffic standard devices on Sheridan Rd. shall be determined by the Field Engineer as structure location causes placement limitations.
 Traffic control for I-74 lane shift during overhead construction will be a mirror image of view shown about E.B. lanes centerline with devices used from Highway Standard 701401.

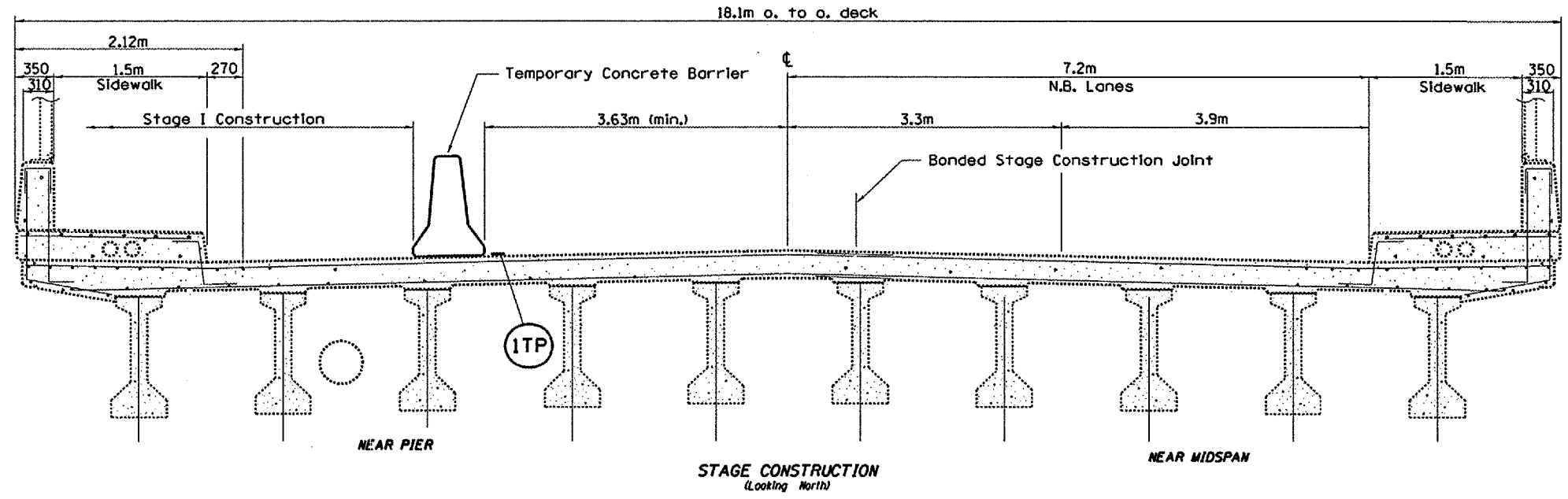
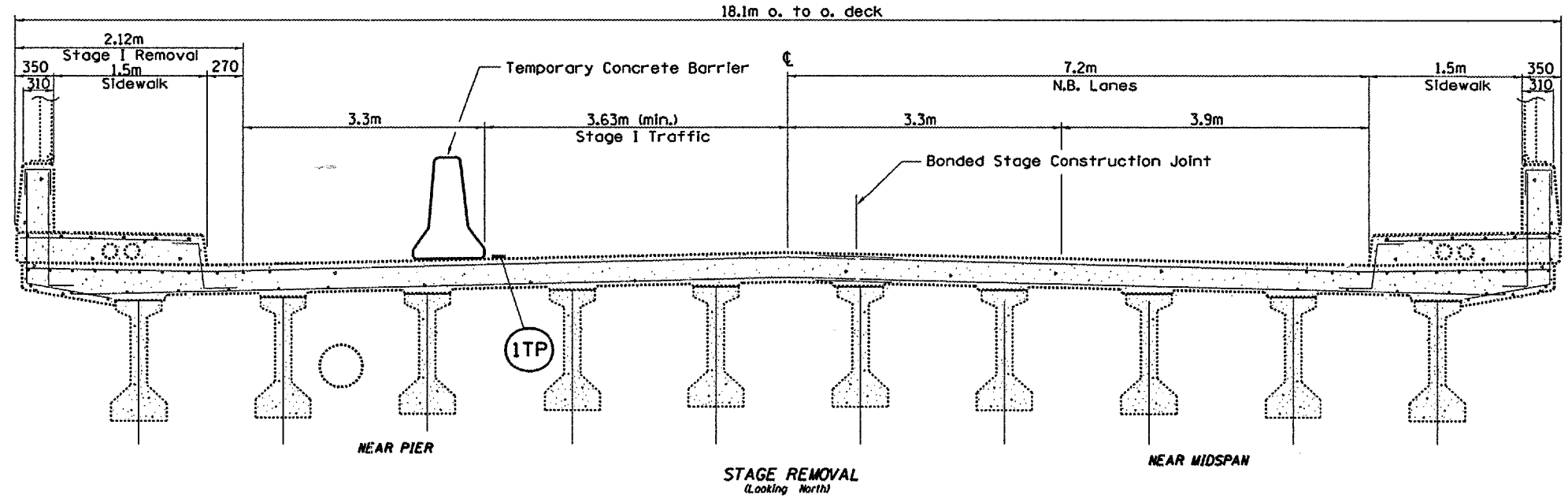
REVISIONS		ILLINOIS DEPARTMENT OF TRANSPORTATION
NAME	DATE	
		CONSTRUCTION AND TRAFFIC CONTROL

SCALE: VERT. _____
 HORIZ. _____
 DATE 03-15-2005

DRAWN BY CEJ
 CHECKED BY _____

PLOT DATE: 5/15/2005
 FILE NAME: S:\CONTRACT\104\10414\10414.dwg
 PLOT SCALE: 1/8"=1'-0"
 REFERENCE: SHEET 6

F.A.I. RITE	SECTION	COUNTY	TOTAL SHEETS	SHEET NO.
74	172-BHB-211	PEORIA	18	7
STA. 146+204.55		TO STA. 149+904.55		
FED. ROAD DIST. NO. 4 ILLINOIS FED. AID PROJECT				



LEGEND

	CONSTRUCTION THIS STAGE		PAVEMENT MARKING
	DRUM		TYPE III BARRICADE
	DIRECTION OF TRAFFIC		TYPE II BARRICADE
	VERTICAL PANEL		TEMPORARY CONCRETE BARRIER
	FLEXIBLE DELINEATORS		

TEMPORARY PAVEMENT MARKINGS

100 mm SOLID TAPE

Notes:
 Refer to Highway Standard 701402 at Sheridan Rd. and 701401 at I-74 for exact placement of traffic management devices and other clarifications as construction staging symbols and dimensioning were duplicated off of these standards. Distance requirements for traffic standard devices on Sheridan Rd. shall be determined by the Field Engineer as structure location causes placement limitations.

REVISIONS	
NAME	DATE

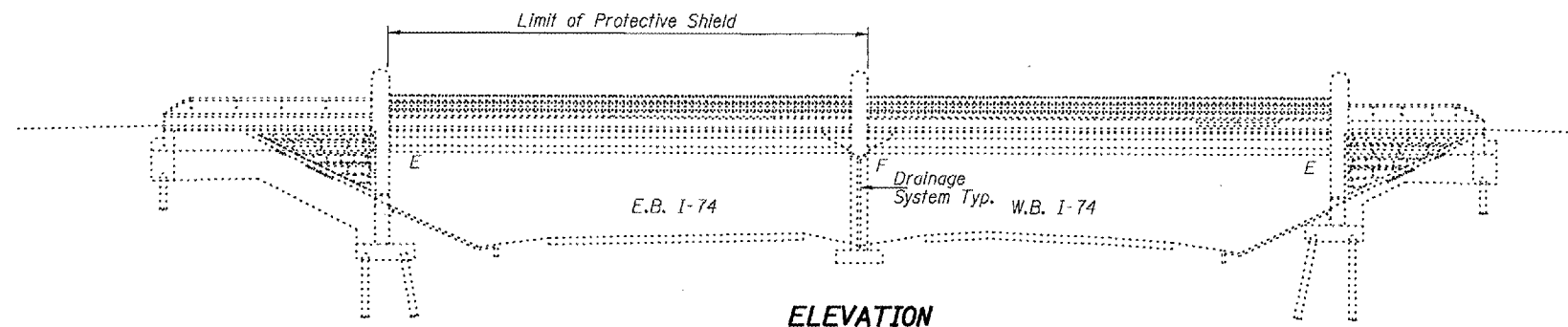
ILLINOIS DEPARTMENT OF TRANSPORTATION
CONSTRUCTION AND TRAFFIC CONTROL
 SCALE: VERT. _____
 HORIZ. _____
 DATE 03-15-2005
 DRAWN BY CEJ
 CHECKED BY _____

PLOT DATE: 03/15/2005
 FILE NAME: S:\CONTRACTS\172-BHB-211\172-BHB-211-174.dwg
 PLOT SCALE: 1/8"=1'-0"
 REFERENCE: SHEET 74

STATE OF ILLINOIS
DEPARTMENT OF TRANSPORTATION

ROUTE NO.	SECTION	COUNTY	SHEETS	SHEET NO.
			14	1
FED. ROAD DIST. NO. 7			ILLINOIS	FED. AID PROJECT

Contract #68492



ELEVATION

GENERAL NOTES

Plan dimensions and details relative to existing structure have been taken from existing plans and are subject to nominal construction variations. It shall be the Contractor's responsibility to verify such dimensions and details in the field and make necessary approved adjustments prior to construction or ordering of materials. Such variations shall not be cause for additional compensation for a change in the scope of the work, however, the Contractor will be paid for the quantity actually furnished at the unit price bid for the work.

Cost of removal and re-installation of all members necessary to complete the work as detailed on the plans and as specified in the Special Provisions shall be included with Furnishing & Erecting PPC I-Beams, 1372 mm.

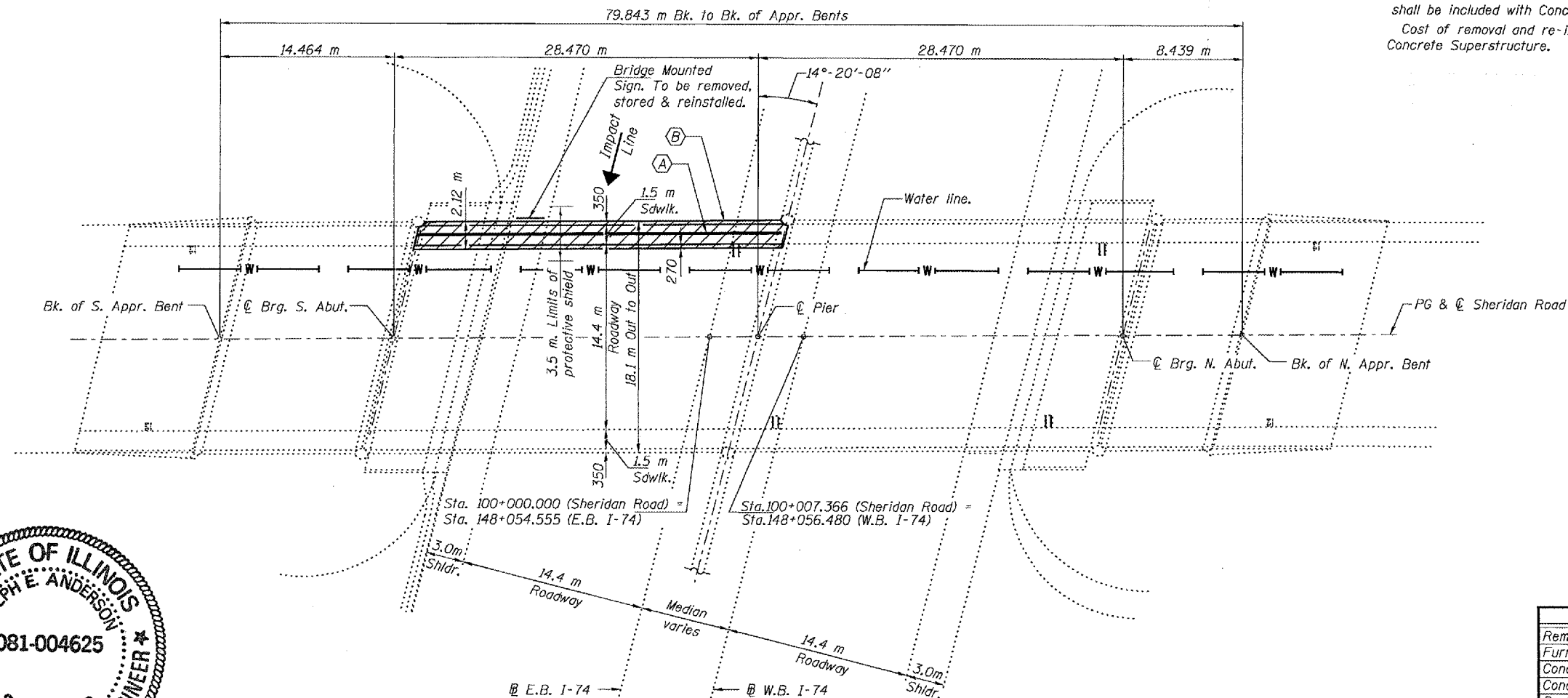
All structural steel shall be shop painted with the inorganic zinc rich primer per AASHTO M300, Type 1. Cost included with Furnishing & Erecting PPC I-Beams, 1372 mm.

Reinforcement bars shall conform to the requirements of AASHTO M 31M, or M 322M Grade 400.

All dimensions are in millimeters (mm) except as noted.

Existing reinforcement extending into the removal area shall be cleaned, straightened and incorporated into the new construction. Any reinforcement bars that are damaged during concrete removal shall be replaced with an approved bar splicer or anchorage system. Cost shall be included with Concrete Removal.

Cost of removal and re-installation of pedestrian fence is included with Concrete Superstructure.



PLAN

- (A) 1.372 m PPC I-beam to be removed & replaced.
- (B) Concrete removal & replacement.

DESIGN STRESSES

FIELD UNITS

$f'_c = 24 \text{ MPa}$
 $f_y = 400 \text{ MPa (Reinf.)}$
 $f_y = 250 \text{ MPa (Struct.) (M270 Gr 250)}$

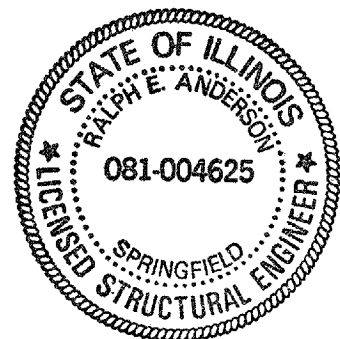
PRECAST PRESTRESSED UNITS

$f'_c = 42 \text{ MPa}$
 $f'_c = 35 \text{ MPa}$
 $f'_s = 1,860 \text{ MPa (12.7 mm } \phi \text{ low lax. strands)}$
 $f_{s1} = 1,395 \text{ MPa (12.7 mm } \phi \text{ low lax. strands)}$

BILL OF MATERIAL

ITEM	UNIT	QUANTITY
Removal of Existing Concrete I-Beam	Each	1
Furnishing & Erecting PPC I-Beams, 1372 mm.	m	28.6
Concrete Removal	m ³	35.5
Concrete Superstructure	m ³	35.5
Protective Coat	m ²	87
Protective Shield	m ²	100
Mechanical Splicers	Each	292
Reinforcement Bars, Epoxy Coated	Kg	3300

GENERAL PLAN AND ELEVATION
SHERIDAN ROAD OVER
FAI ROUTE 74 (I-74)
PEORIA COUNTY
SN 072-0193



EXPIRES 11-30-2006

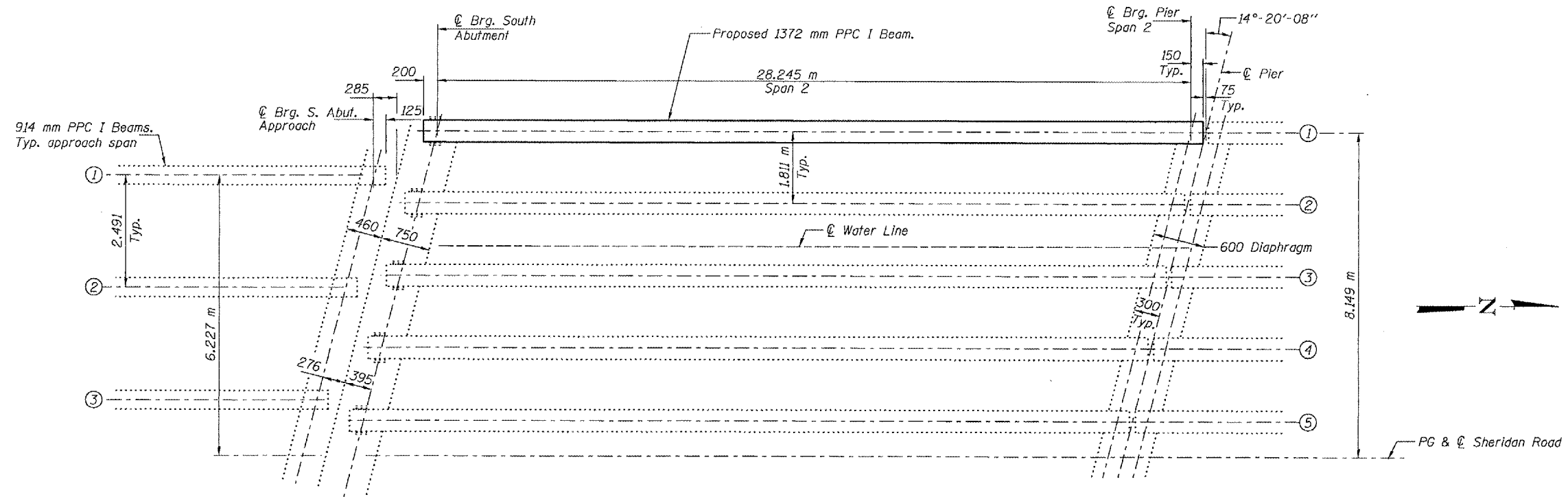
DESIGNED	Dominic Baliva
CHECKED	John A. Morris
DRAWN	baliva
CHECKED	NAR/S.T.B.

EXAMINED	May 10, 2005
PASSED	Ralph E. Anderson

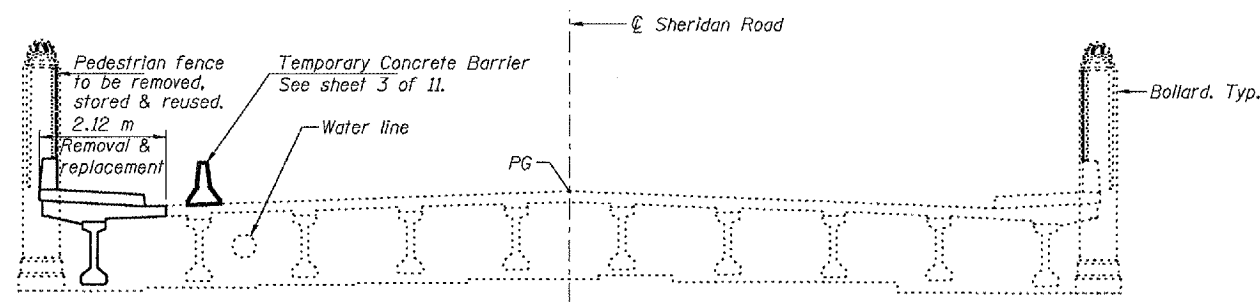
STATE OF ILLINOIS
DEPARTMENT OF TRANSPORTATION

ROUTE NO.	SECTION	COUNTY	TOTAL SHEETS	SHEET NO.
			18	9
FED. ROAD DIST. NO. 7	ILLINOIS	FED. AID PROJECT		

Contract #68492



PARTIAL FRAMING PLAN



SECTION THRU DECK
Looking North

DESIGNED	DAB
CHECKED	SJB
DRAWN	baliva
CHECKED	DAB SJB

May 10, 2005
 EXAMINED *John A. Morris*
 ENGINEER OF STRUCTURAL SERVICES
 PASSED *Walsh E. Anderson*
 ENGINEER OF BRIDGES AND STRUCTURES

REPAIR DETAILS
SHERIDAN ROAD OVER
FAI ROUTE 74 (I-74)
PEORIA COUNTY
SN 072-0193

STATE OF ILLINOIS
DEPARTMENT OF TRANSPORTATION

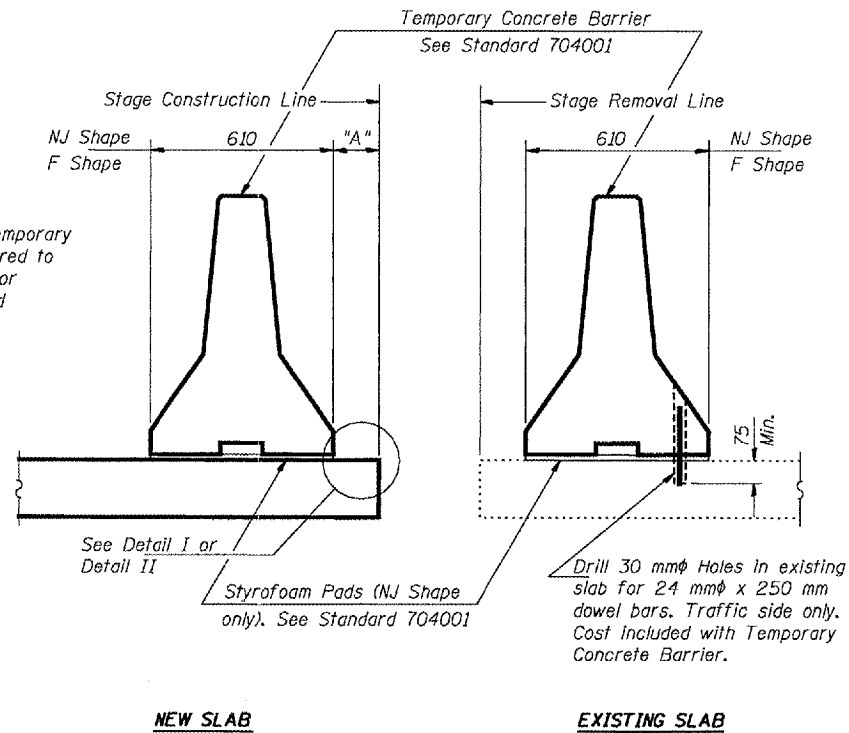
ROUTE NO.	SECTION	COUNTY	SHEET NO.	SHEET
			14	10
FED. ROAD DIST. NO. 7		ILLINOIS		FED. AID PROJECT-

SHEET NO. 3

11 SHEETS

Contract #68492

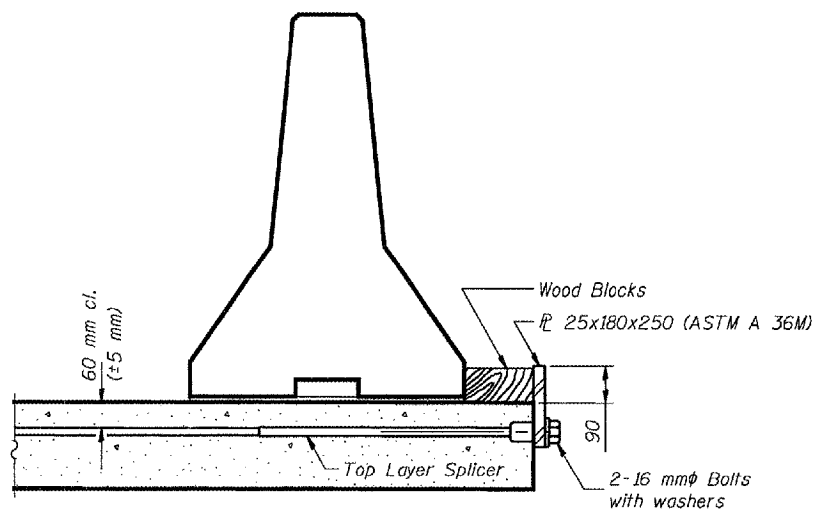
When "A" is 1 m or less, the temporary concrete barrier shall be anchored to new slab according to Detail I or Detail II. No anchorage required when "A" is greater than 1 m.



SECTIONS THRU SLAB

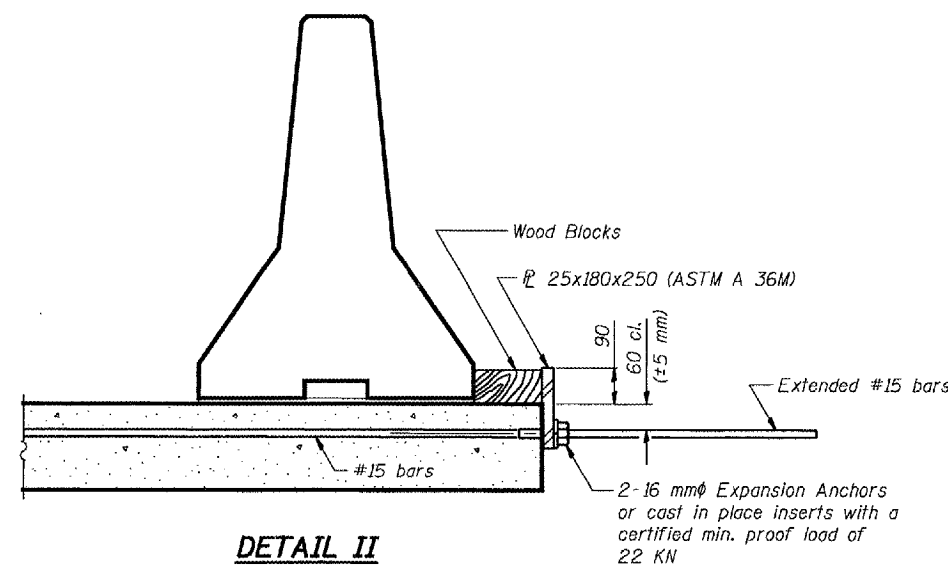
NOTES

- Detail I - With Bar Splicer or Couplers:
Connect one (1) 25x180x250 steel \bar{L} to the top layer of couplers with 2-16 mm ϕ bolts screwed to coupler at approximate \bar{C} of each barrier panel.
- Detail II - With Extended Reinforcement Bars:
Connect one (1) 25x180x250 steel \bar{L} to the concrete slab with 2-16 mm ϕ Expansion Anchors or cast in place inserts spaced between the top layer of reinforcement at approximate \bar{C} of each barrier panel.
- Cost of anchorage included with Temporary Concrete Barrier.
All dimensions are in millimeters (mm) except as noted.



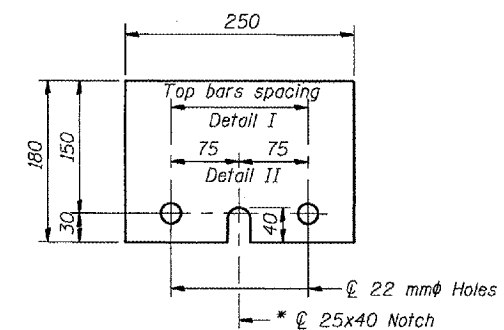
DETAIL I

The 25x180x250 Plate shall not be removed until Stage II Construction forms and reinforcement bars are in place.



DETAIL II

The 25x180x250 Plate shall not be removed until Stage II Construction forms and all reinforcement bars are in place and the concrete is ready to be placed.



25x180x250

* Required only with Detail II

DESIGNED	DAB
CHECKED	SJB
DRAWN	baliva
CHECKED	DAB SJB

May 10, 2005
EXAMINED *John A. Morris*
ENGINEER OF STRUCTURAL SERVICES
PASSED *Ralph E. Anderson*
ENGINEER OF BRIDGES AND STRUCTURES

R-27 (M)

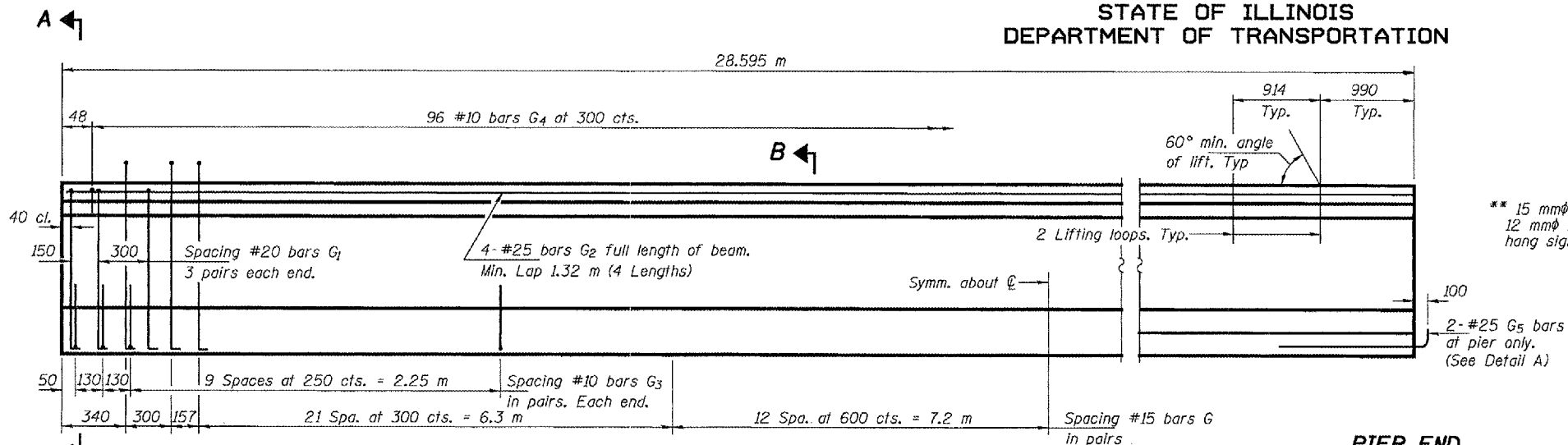
TEMPORARY BARRIER DETAILS
SHERIDAN ROAD OVER
FAI ROUTE 74 (I-74)
PEORIA COUNTY
SN 072-0193

STATE OF ILLINOIS
DEPARTMENT OF TRANSPORTATION

ROUTE NO.	SECTION	COUNTY	TOTAL SHEETS	SHEET NO.
			18	11
FED. ROAD DIST. NO. 7	ILLINOIS	FED. AID PROJECT-		

SHEET NO. 4
11 SHEETS

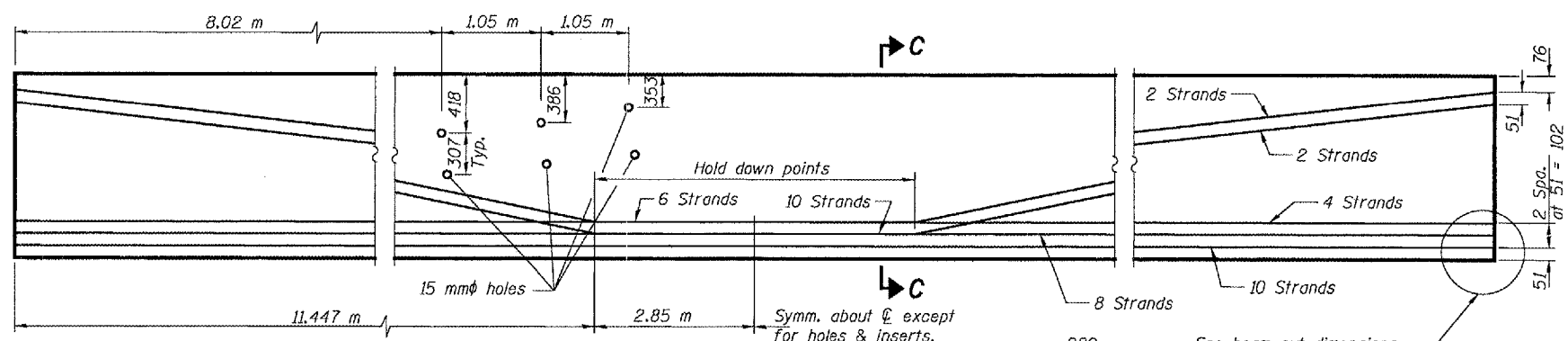
Contract #68492



ELEVATION OF BEAM
(Showing Reinforcement & Dimensions)

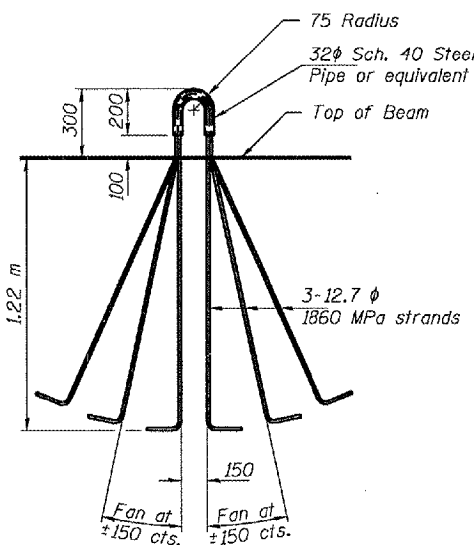
PIER END

ABUTMENT END

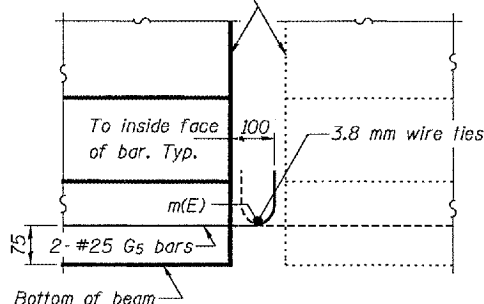
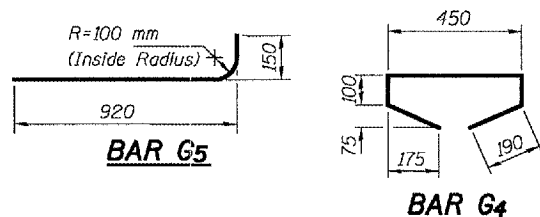


ELEVATION OF BEAM
(Showing Prestressing Steel)

See beam cut dimensions
in Detail A. (Pier end only.)

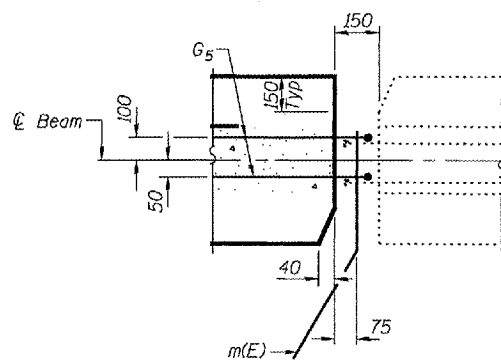


LIFTING LOOP DETAIL

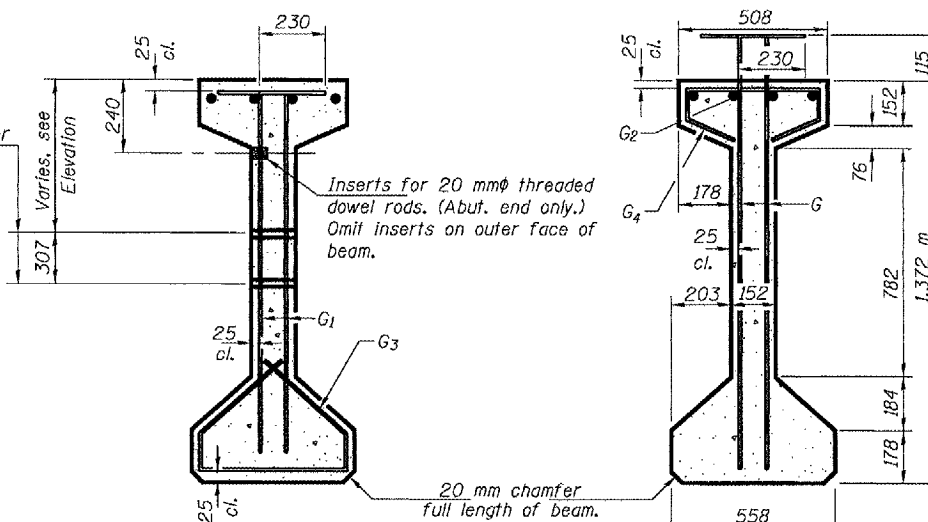


ELEVATION

DETAIL A



PLAN



SECTION A-A

SECTION B-B

NOTES

All inserts and threaded dowel rods for inserts, reinforcing and Prestressing Steel, and other items which are cast into the Precast Concrete I-Beams shall be included in the contract unit price per meter of "Furnishing and Erecting Precast Prestressed Concrete I-Beams, 1372 mm."

Inserts for 20 mm threaded dowel rods are to be two strut, coil type for interior I-Beams and single coil, flared loop type for exterior I-Beams.

Prestressing steel shall be uncoated high strength, low relaxation 7-wire strand (Fu=1860 MPa).

The nominal diameter shall be 12.7 mm and the nominal cross-sectional area shall be 98.71 mm².

Non-prestressing steel shall conform to AASHTO designation M 31M or M 322M Grade 400.

Required release strength, f'ci, shall be 35 MPa.

Reinforcement bars designated (E) shall be epoxy coated.

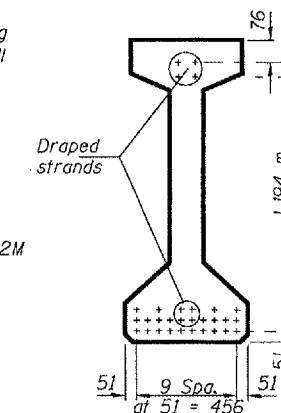
All dimensions are in millimeters (mm) except as noted.

For Bar detail m(E) see sheet 6 of 11.

** Place reinforcement bars minimum 150 mm from these 15 mm ϕ holes.

The 15 mm holes shall be 150 mm min. from \bar{C} prestress strands.

A minimum 64 ϕ lifting pin shall be used to engage the lifting loops during handling. Tilt the G₅ bar an exterior face inward to maintain 38 concrete cover



SECTION C-C

*** BAR LIST**

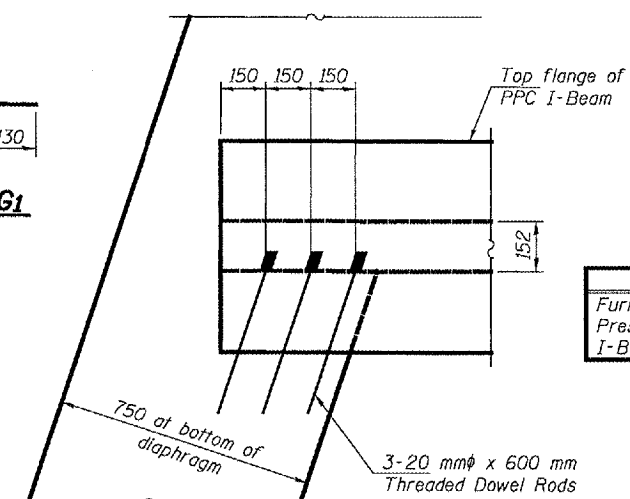
Bar No.	Size	Length (m)	Shape
G	#15	1.91	TL
G ₁	#20	1.61	TL
G ₂	#25	8.10	U
G ₃	#10	1.02	U
G ₄	#10	1.03	U
G ₅	#25	1.07	U

* For one beam only.

BILL OF MATERIAL

Item	Unit	Total
Furnishing and Erecting Precast Prestressed Concrete I-Beams, 1372 mm	m	28.6

BEAM REPLACEMENT DETAILS
SHERIDAN ROAD OVER
FAI ROUTE 74 (I-74)
PEORIA COUNTY
SN 072-0193



DETAIL C

(At Abutment end only)

DESIGNED	DAB
CHECKED	SJB
DRAWN	baliva
CHECKED	DAB SJB

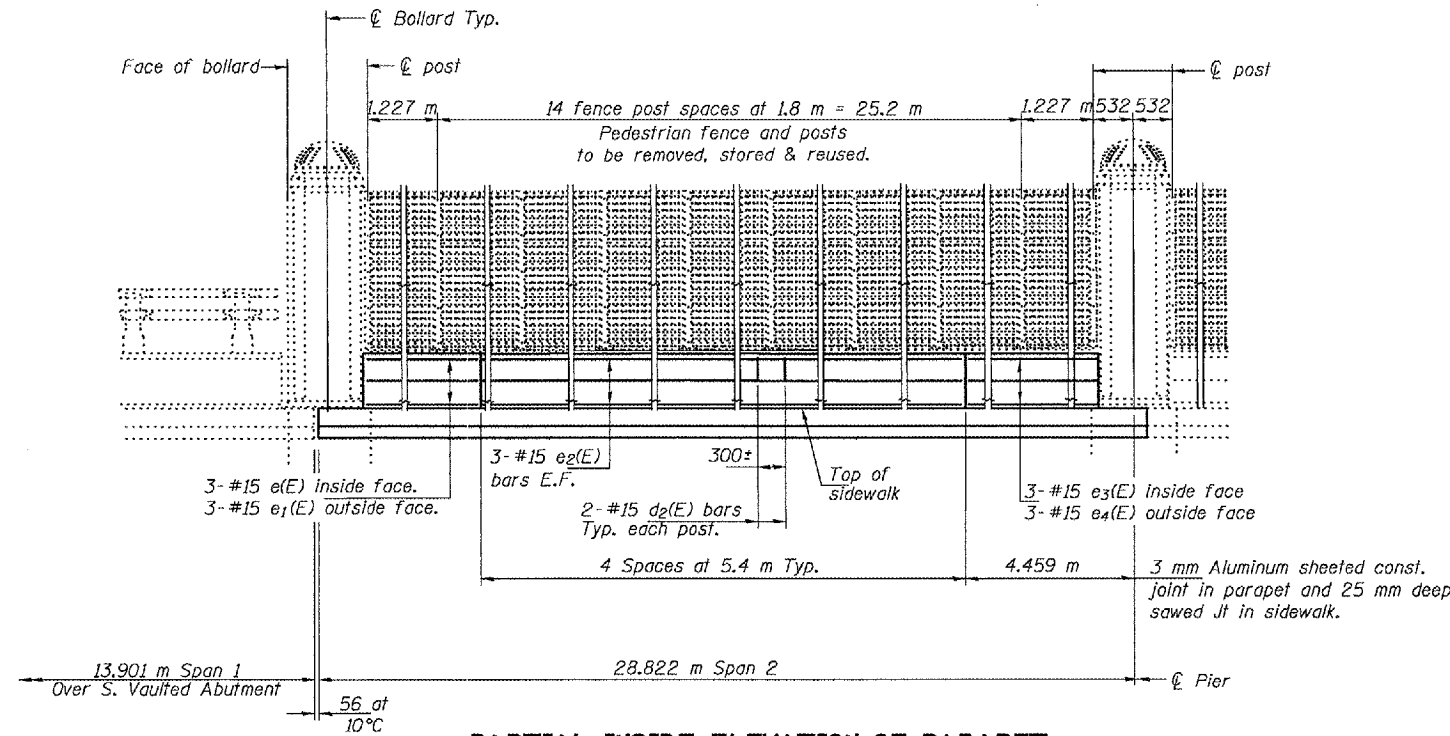
EXAMINED *John A. Morris*
ENGINEER OF STRUCTURAL SERVICES
PASSED *Ralph E. Anderson*
ENGINEER OF BRIDGES AND STRUCTURES

May 10, 2005

STATE OF ILLINOIS
DEPARTMENT OF TRANSPORTATION

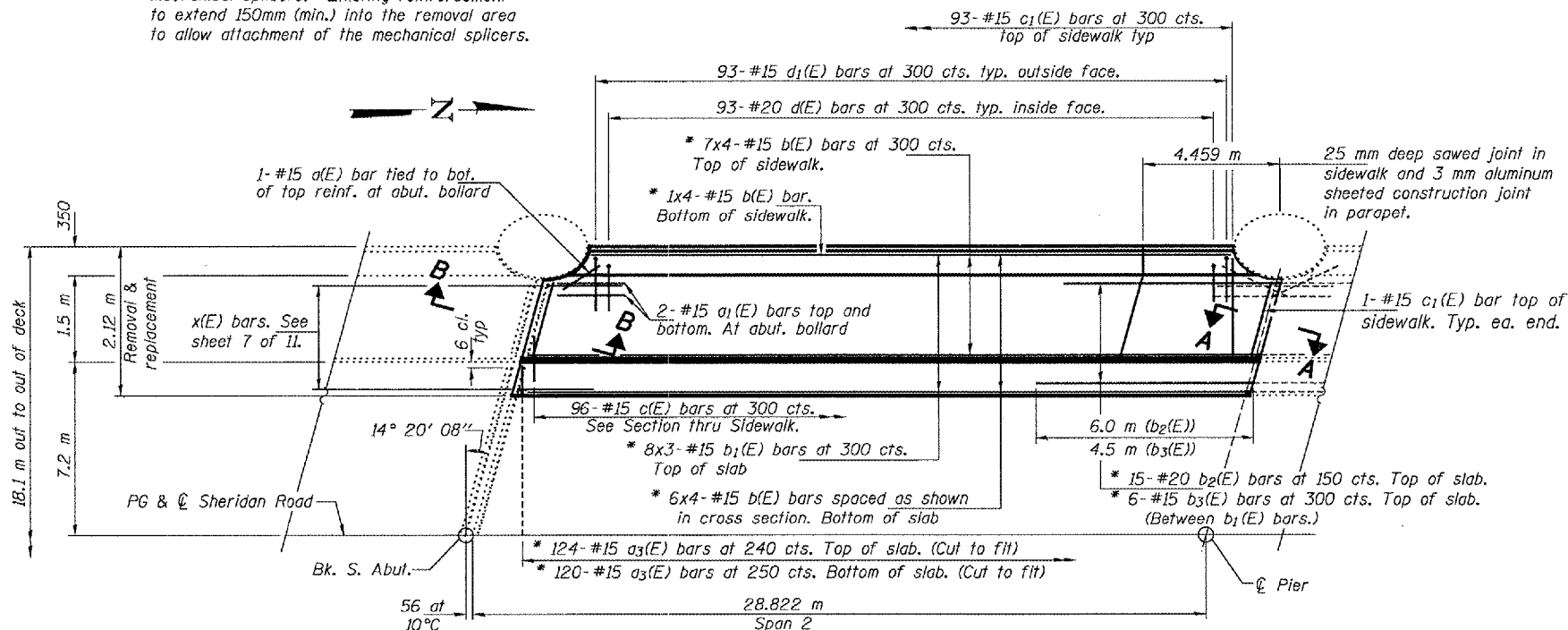
ROUTE NO.	SECTION	COUNTY	SHEET NO.	SHEET NO.
			18	12
FED. ROAD DIST. NO. 7		ILLINOIS	FED. AID PROJECT-	

Contract #68492



PARTIAL INSIDE ELEVATION OF PARAPET

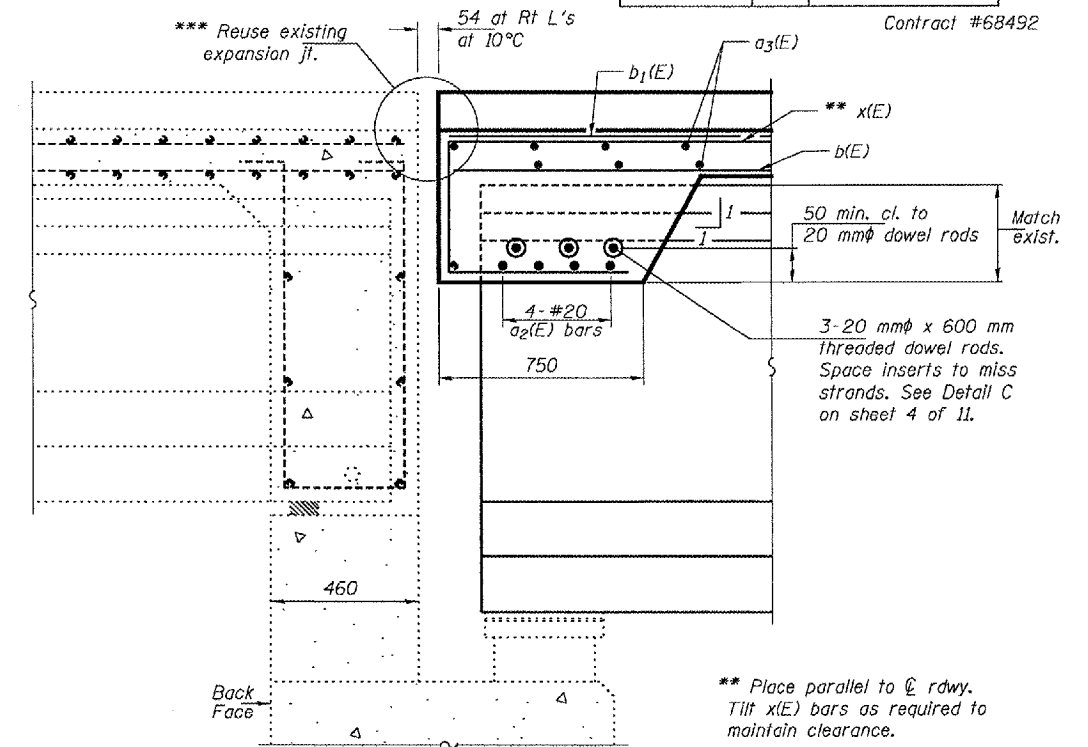
* Attach to existing reinforcement with mechanical splicers. Existing reinforcement to extend 150mm (min.) into the removal area to allow attachment of the mechanical splicers.



PARTIAL PLAN

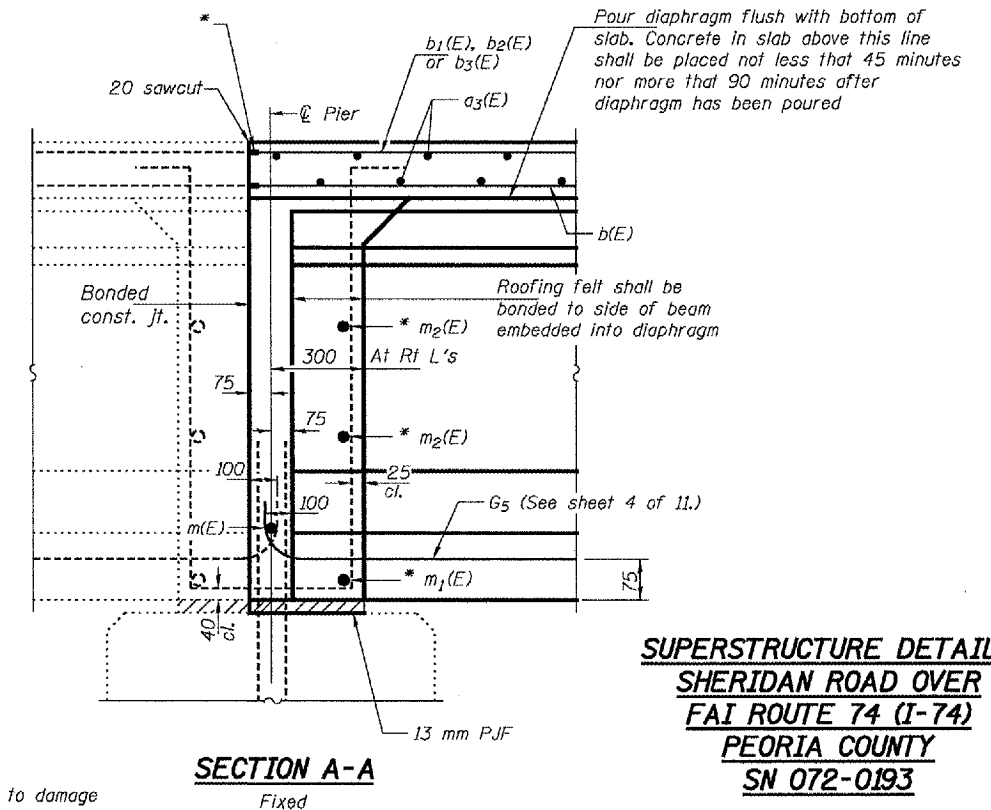
Notes:
All dimensions are in millimeters (mm) except as noted.
Reinforcement bars designated (E) shall be epoxy coated.
Cost of 50φ conduits & 4.4 Kg/ m roofing felt is included with Concrete Superstructure.
Bars indicated thus 7x3-#15 etc. indicates 7 lines of bars with 3 lengths per line.
All edges shall have 20 mm chamfer except as noted.
Existing reinforcement extending into the removal area shall be cleaned, straightened and incorporated into the new construction.
Any reinforcement bars that are damaged during concrete removal shall be replaced with an approved bar splicer or anchorage system. Cost shall be included with Concrete Removal.
Cut reinforcement in field to clear scuppers & bollards.
The Contractor shall use extreme care during concrete removal so as not to damage the PPC I-Beam.

MIN. BAR LAPS
#15 bars = 510



SECTION B-B

*** Reuse existing expansion jt.
*** The existing expansion joint shall be reused. It shall be the Contractor's responsibility to ensure that the strip seal, the locking edge rails, the studs & all other components of the joint system are not damaged during the construction process. Cost included with Concrete Removal.
** Place parallel to center row. Tilt x(E) bars as required to maintain clearance.



SECTION A-A
Fixed

SUPERSTRUCTURE DETAILS
SHERIDAN ROAD OVER
FAI ROUTE 74 (I-74)
PEORIA COUNTY
SN 072-0193

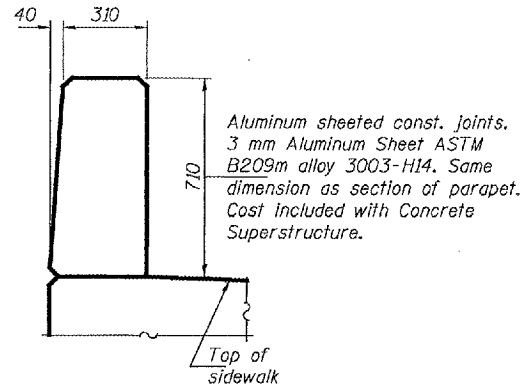
DESIGNED	DAB
CHECKED	SJB
DRAWN	baliva
CHECKED	DAB SJB

May 10, 2005
EXAMINED *John A. Morris*
ENGINEER OF STRUCTURAL SERVICES
PASSED *Walsh E. Anderson*
ENGINEER OF BRIDGES AND STRUCTURES

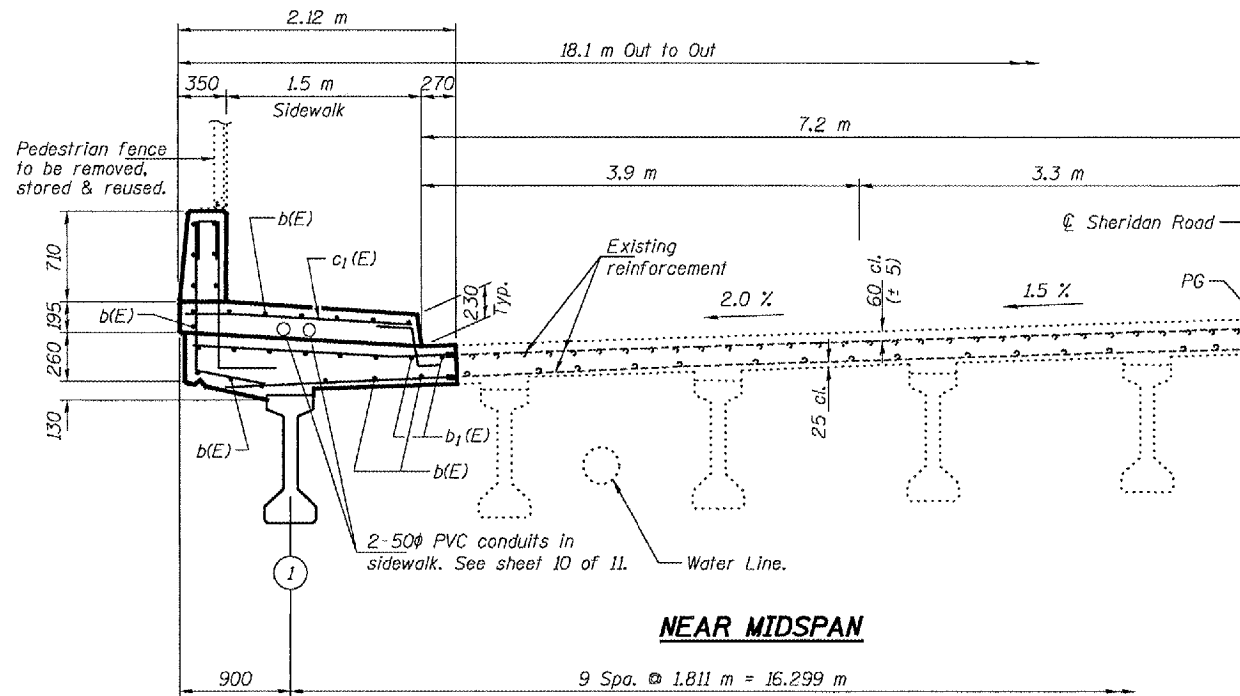
STATE OF ILLINOIS
DEPARTMENT OF TRANSPORTATION

ROUTE NO.	SECTION	COUNTY	SHEET NO.	SHEET NO.
			18	13
FED. ROAD DIST. NO. 7	ILLINOIS	FED. AID PROJECT-		

Contract #68492



PARAPET JOINT DETAILS



NEAR MIDSPAN

PARTIAL CROSS SECTION THRU BRIDGE DECK

Looking North

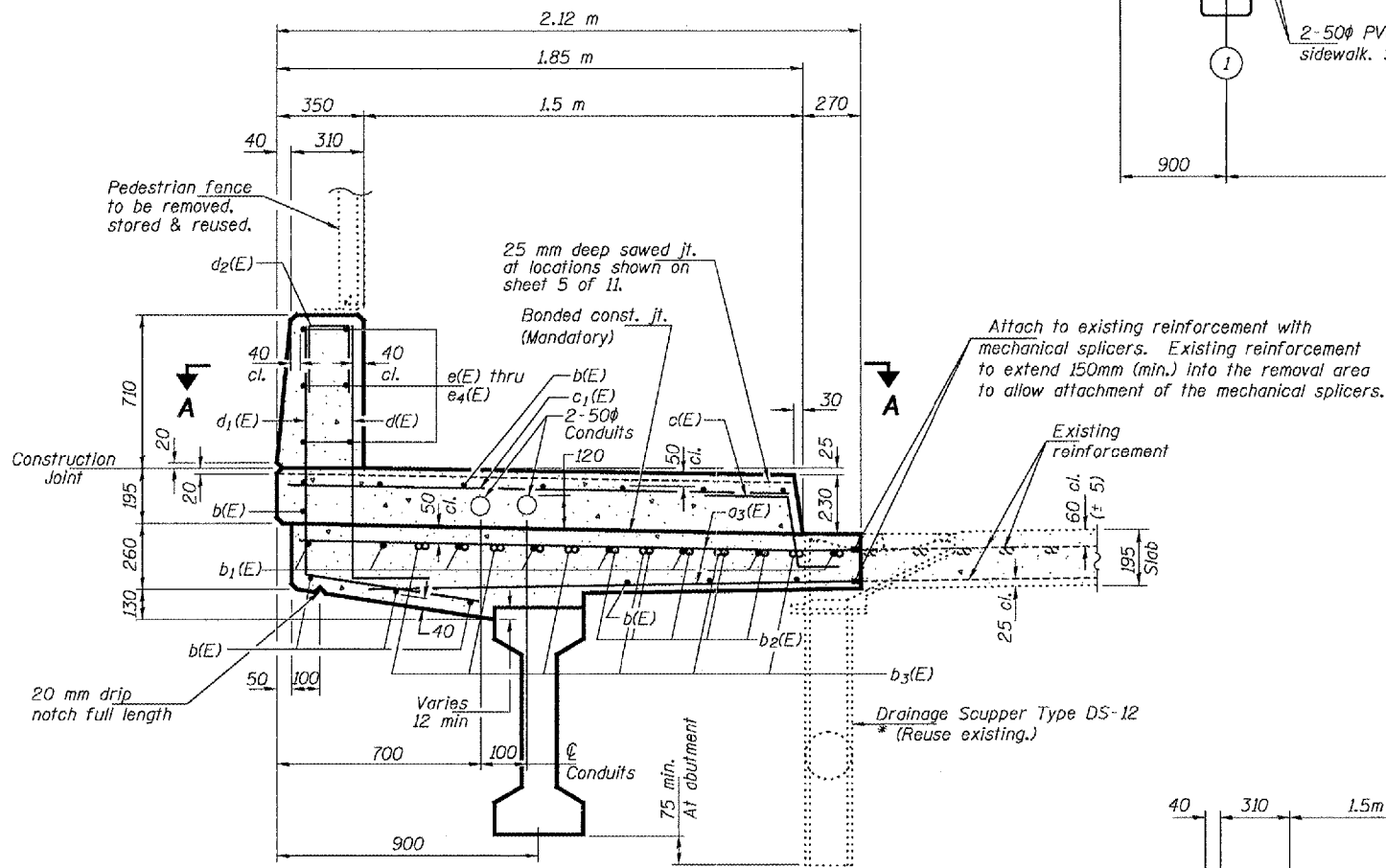


BAR d₁(E)

BAR d(E)

BILL OF MATERIAL

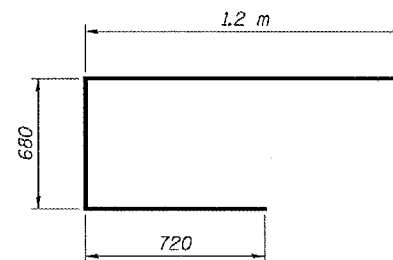
Bar	No.	Size	Length (m)	Shape
d(E)	1	15	0.65	—
a ₁ (E)	4	15	2.00	—
a ₂ (E)	4	20	1.22	—
a ₃ (E)	244	15	2.02	—
b(E)	56	15	7.60	—
b ₁ (E)	24	15	9.94	—
b ₂ (E)	15	20	6.00	—
b ₃ (E)	6	15	4.50	—
c(E)	96	15	0.73	—
c ₁ (E)	95	15	1.70	—
d ₁ (E)	93	20	1.32	—
d ₂ (E)	93	15	1.42	—
d ₃ (E)	30	15	0.67	—
e(E)	3	15	2.09	—
e ₁ (E)	3	15	2.01	—
e ₂ (E)	24	15	5.30	—
e ₃ (E)	3	15	3.89	—
e ₄ (E)	3	15	3.81	—
m(E)	1	25	1.16	—
m ₁ (E)	1	20	0.90	—
m ₂ (E)	2	15	1.10	—
x(E)	7	20	2.60	—
Reinforcement Bars, Epoxy Coated		Kg	3300	
Concrete Superstructure		m ³	35.5	



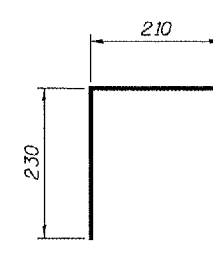
SECTION THRU SIDEWALK

(Near Pier)

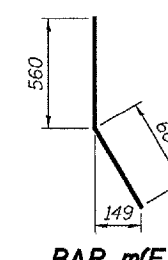
* The Contractor shall ensure that the scupper is supported at all times during the construction process.



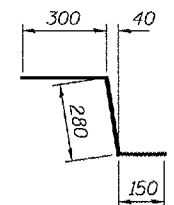
BAR x(E)



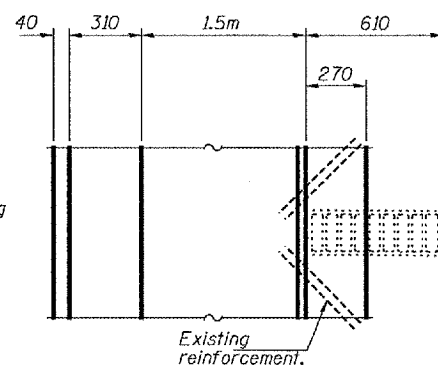
BAR d₂(E)



BAR m(E)



BAR c(E)



VIEW A-A

Notes:

Reinforcement bars designated (E) shall be epoxy coated.
All edges shall have 20 mm chamfer except as noted.
Existing reinforcement extending into the removal area shall be cleaned, straightened and incorporated into the new construction.
Any reinforcement bars that are damaged during concrete removal shall be replaced with an approved bar splicer or anchorage system.
Cost shall be included with Concrete Removal.
Cost of conduit is included with Concrete Superstructure.

SUPERSTRUCTURE DETAILS
SHERIDAN ROAD OVER
FAI ROUTE 74 (I-74)
PEORIA COUNTY
SN 072-0193

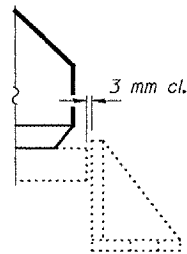
DESIGNED	DAB
CHECKED	SJB
DRAWN	baliva
CHECKED	DAB SJB

May 10, 2005
EXAMINED John A. Morris
ENGINEER OF STRUCTURAL SERVICES
PASSED Ralph E. Anderson
ENGINEER OF BRIDGES AND STRUCTURES

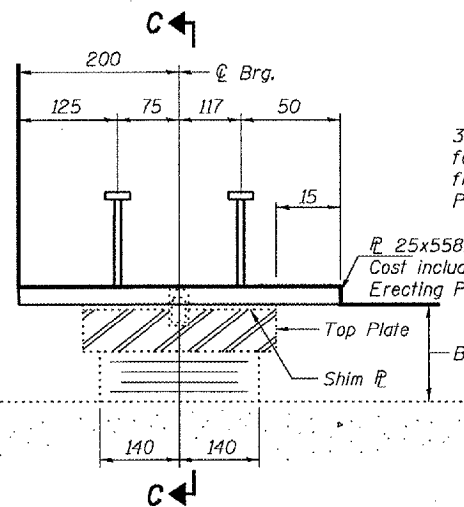
STATE OF ILLINOIS
DEPARTMENT OF TRANSPORTATION

ROUTE NO.	SECTION	COUNTY	SHEET NO.	SHEETS
			18 14	11
FED. ROAD DIST. NO. 7	ILLINOIS	FED. AID PROJECT		

Contract #68492



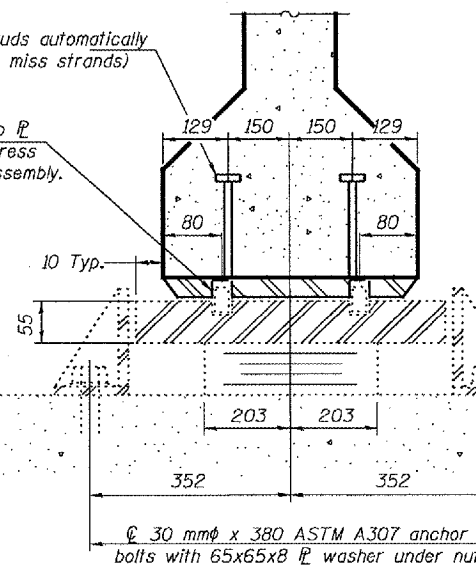
SIDE RETAINER LOCATION



ELEVATION AT ABUTMENT

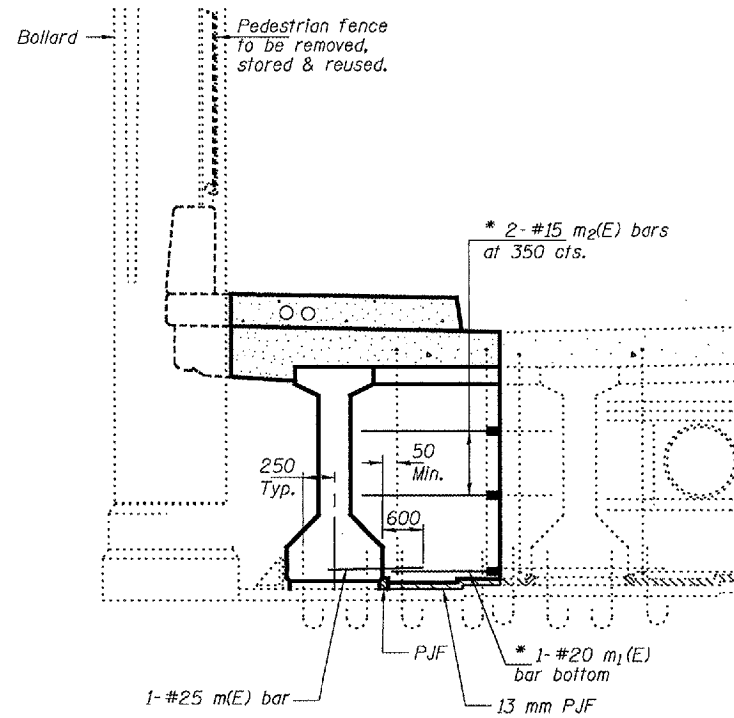
19 mm ϕ x 150 mm Studs automatically end welded (space to miss strands)
35 mm ϕ holes 25 mm deep in top \bar{P} for 32 mm ϕ pintles. Thread or press fit pintles 25 mm into bearing assembly. Plug before casting beam
 \bar{P} 25x558x367 cast with beam. Cost included with Furnishing & Erecting PPC I-Beams, 1372 mm.

TYPE I ELASTOMERIC EXP. BRG.

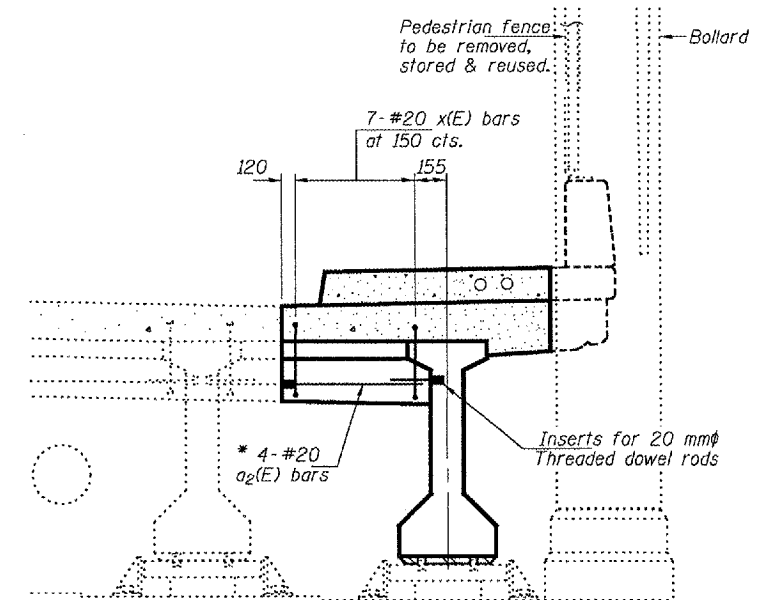


SECTION C-C

Notes:
All dimensions are in millimeters (mm) except as noted.
Reinforcement bars designated (E) shall be epoxy coated.
All edges shall have 20 mm chamfer except as noted.
x(E) bars are parallel to \bar{C} Roadway.
Existing reinforcement extending into the removal area shall be cleaned, straightened and incorporated into the new construction. Any reinforcement bars that are damaged during concrete removal shall be replaced with an approved bar splicer or anchorage system. Cost shall be included with Concrete Removal.

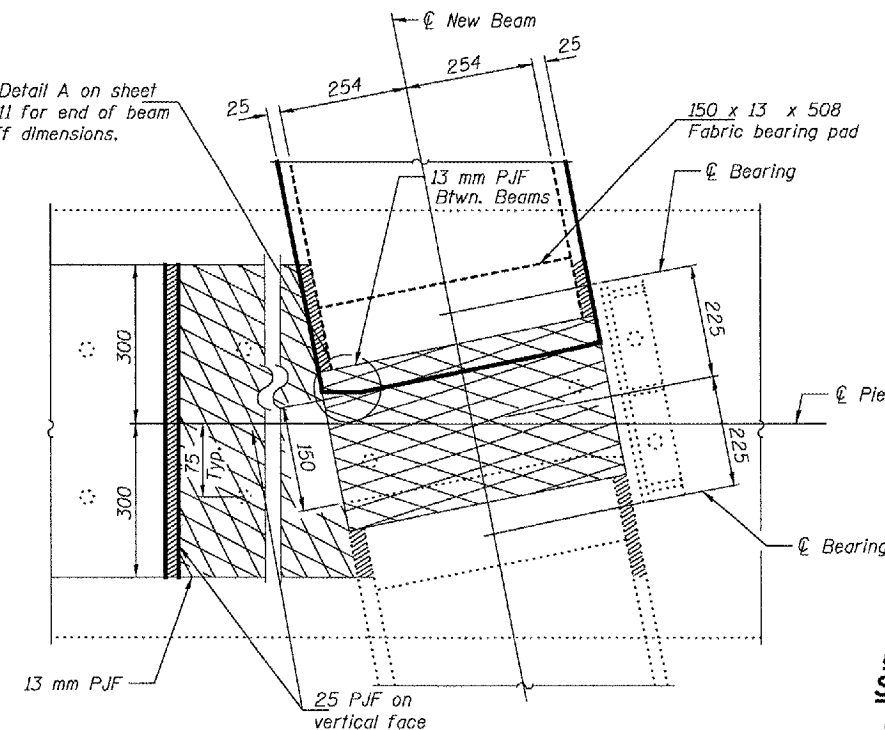


DIAPHRAGM AT PIER (FIXED)
(Looking North)



DIAPHRAGM AT SOUTH ABUTMENT
(Looking South)

See Detail A on sheet 4 of 11 for end of beam cut off dimensions.



PLAN - BEARING PAD AT PIER

DIAPHRAGM DETAILS
SHERIDAN ROAD OVER
FAI ROUTE 74 (I-74)
PEORIA COUNTY
SN 072-0193

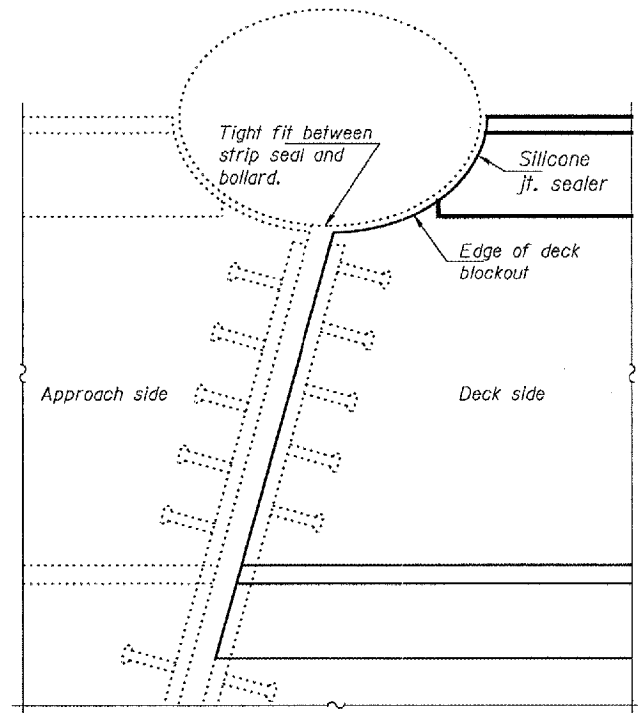
DESIGNED	DAB
CHECKED	SJB
DRAWN	ballva
CHECKED	DAB SJB

May 10, 2005
EXAMINED *John A. Morris*
ENGINEER OF STRUCTURAL SERVICES
PASSED *Ralph E. Anderson*
ENGINEER OF BRIDGES AND STRUCTURES

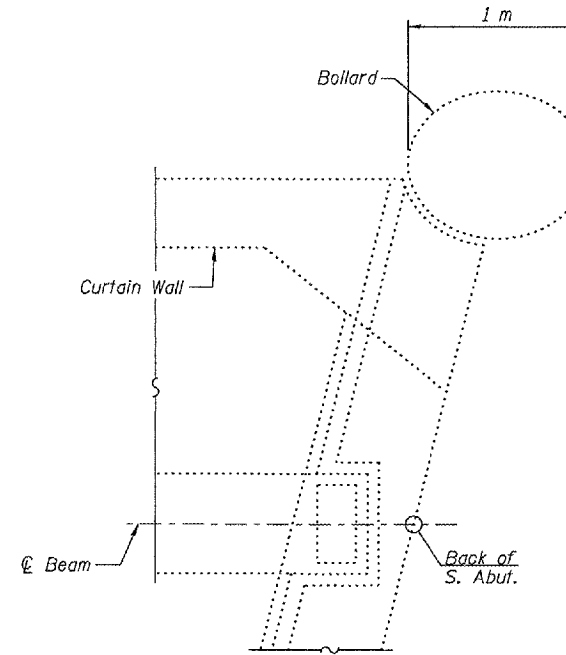
STATE OF ILLINOIS
DEPARTMENT OF TRANSPORTATION

ROUTE NO.	SECTION	COUNTY	TOTAL SHEETS	SHEET NO.	SHEET NO. 8 11 SHEETS
			18	15	
FED. ROAD DIST. NO. 7		ILLINOIS	FED. AID PROJECT		

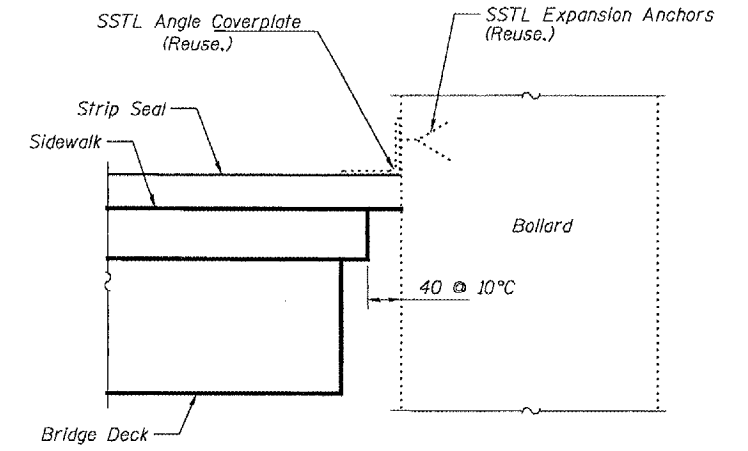
Contract #68492



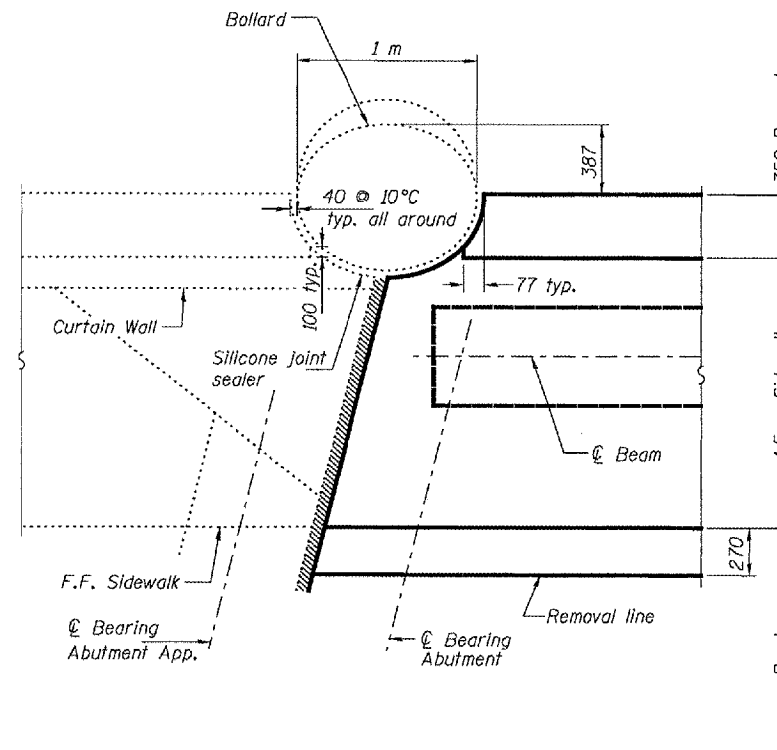
PLAN



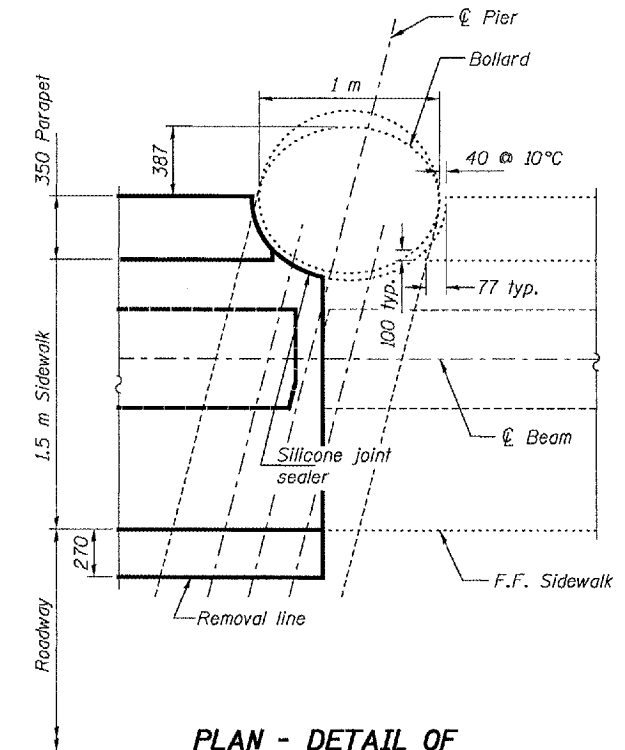
PARTIAL PLAN UNDER DECK
Span 1 Over South Vaulted Abutment



SECTION THROUGH JOINT SEAL



PLAN - DETAIL AT ABUTMENT JOINT



PLAN - DETAIL OF PARAPET AT PIER

DESIGNED	DAB
CHECKED	SJB
DRAWN	baliva
CHECKED	DAB SJB

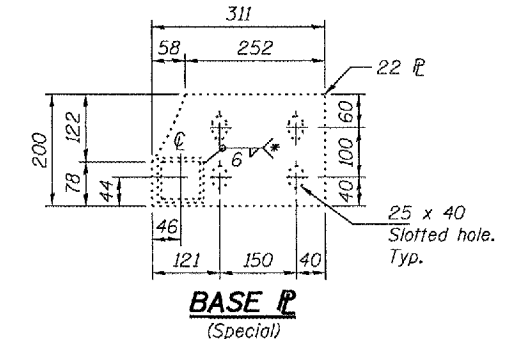
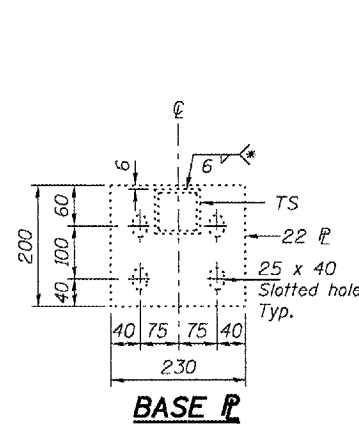
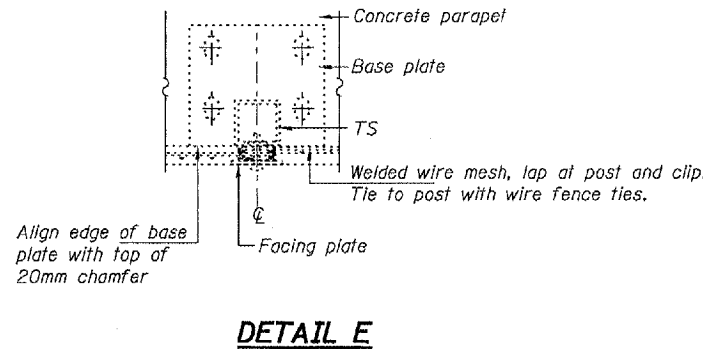
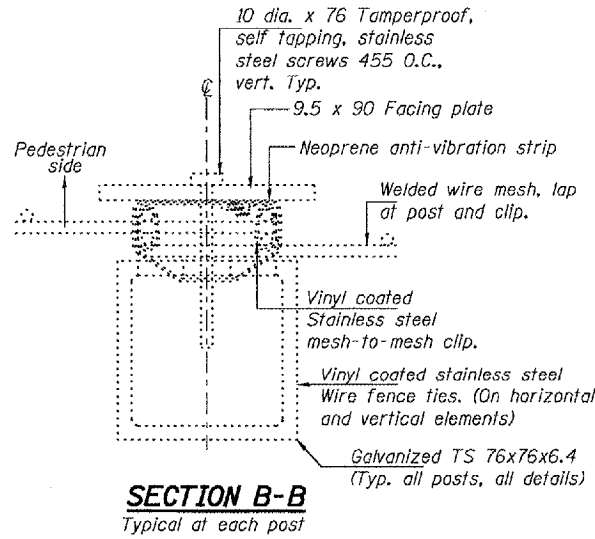
May 10, 2005
 EXAMINED *John A. Morris*
 ENGINEER OF STRUCTURAL SERVICES
 PASSED *Ralph E. Anderson*
 ENGINEER OF BRIDGES AND STRUCTURES

EXPANSION JOINT DETAILS
SHERIDAN ROAD OVER
FAI ROUTE 74 (I-74)
PEORIA COUNTY
SN 072-0193

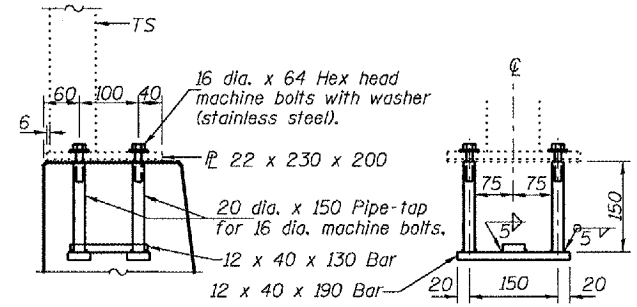
STATE OF ILLINOIS
DEPARTMENT OF TRANSPORTATION

ROUTE NO.	SECTION	COUNTY	SHEET NO.	SHEET NO.
			18	16
FED. ROAD DIST. NO. 7	ILLINOIS	FED. AID PROJECT-		

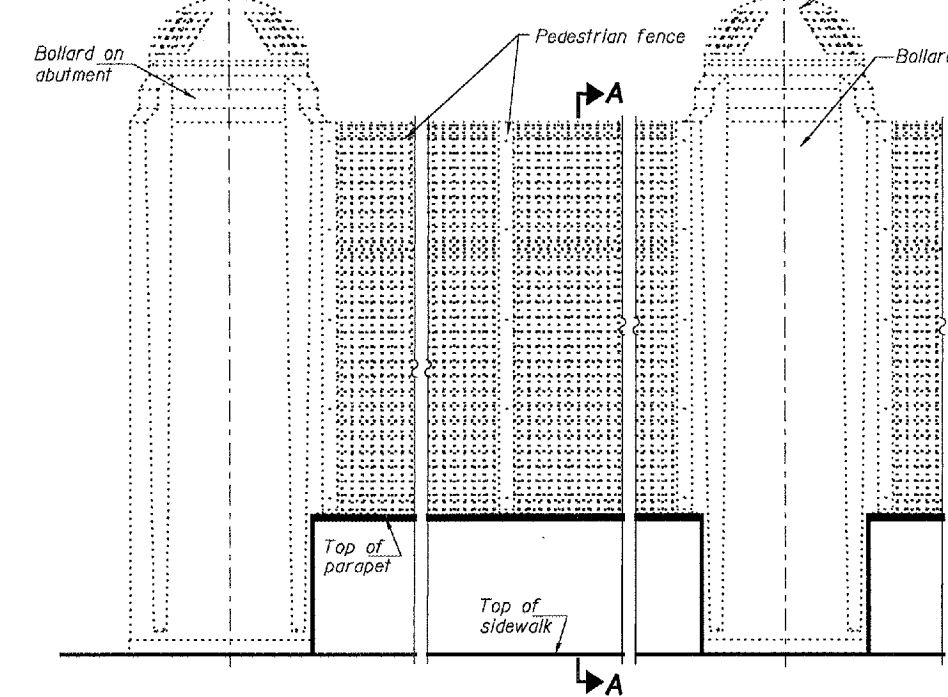
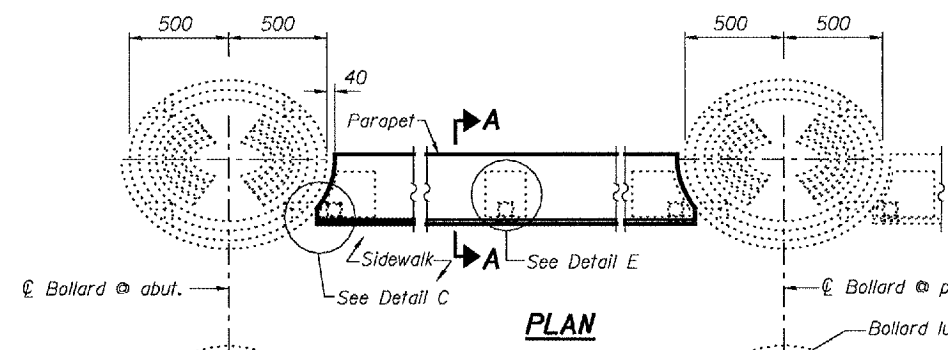
Contract #68492



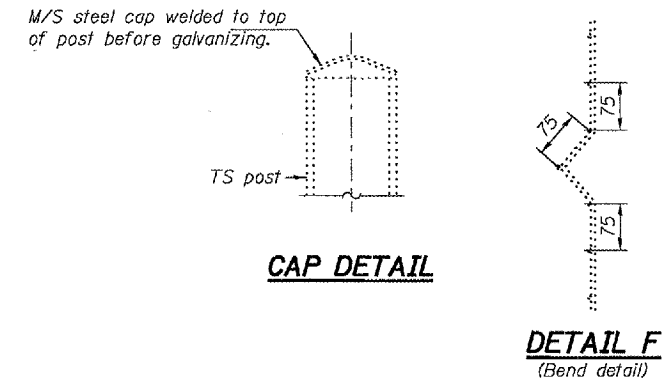
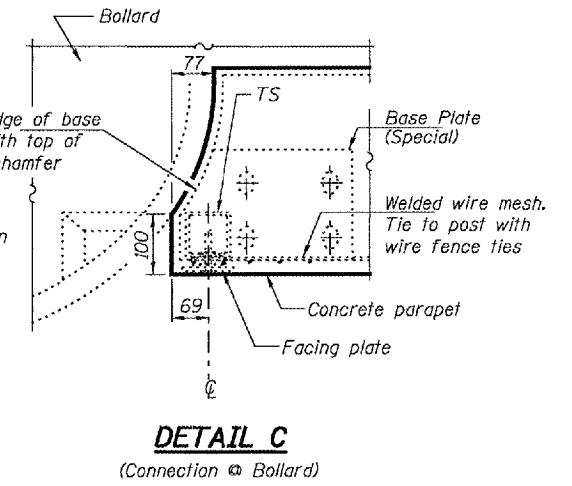
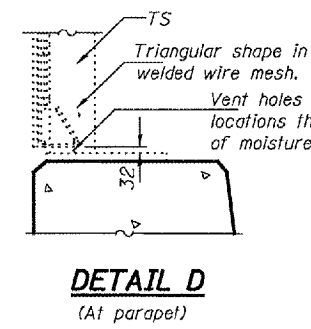
* Built out to obtain full throat thickness



ANCHOR BOLT ASSEMBLY
In lieu of the cast-in-place anchor device shown, the Contractor has the option of drilling and epoxy grouting 16 mm hot dip galvanized anchor rods. Embedment shall be according to the manufacturer's specifications. Cost included with Concrete Superstructure.

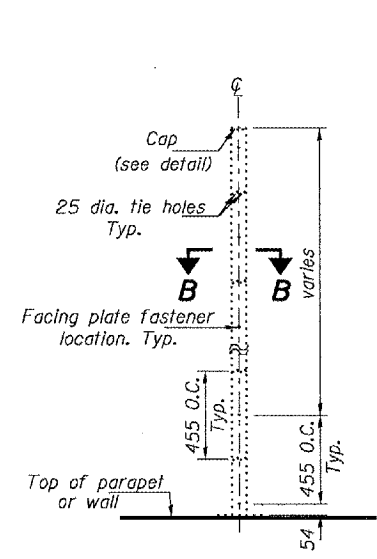


ELEVATION
Pedestrian fence and posts to be removed, stored & reused.

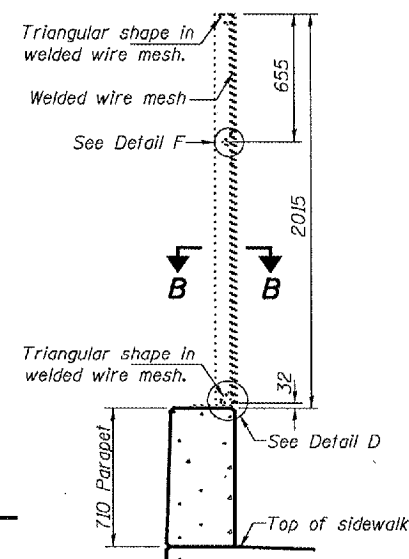


CAP DETAIL

DETAIL F (Bend detail)



TS POST ELEVATION
Facing plate not shown for clarity.



SECTION A-A
Fence Type II

FENCE DETAILS
SHERIDAN ROAD OVER
FAI ROUTE 74 (I-74)
PEORIA COUNTY
SN 072-0193

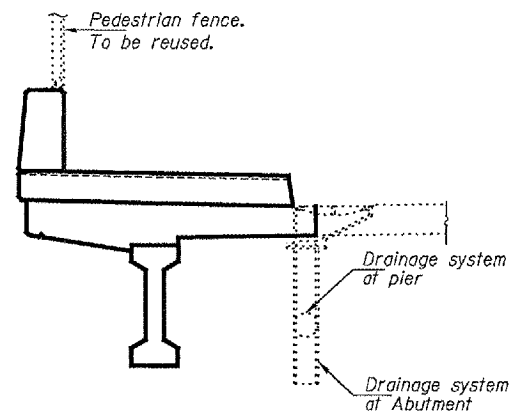
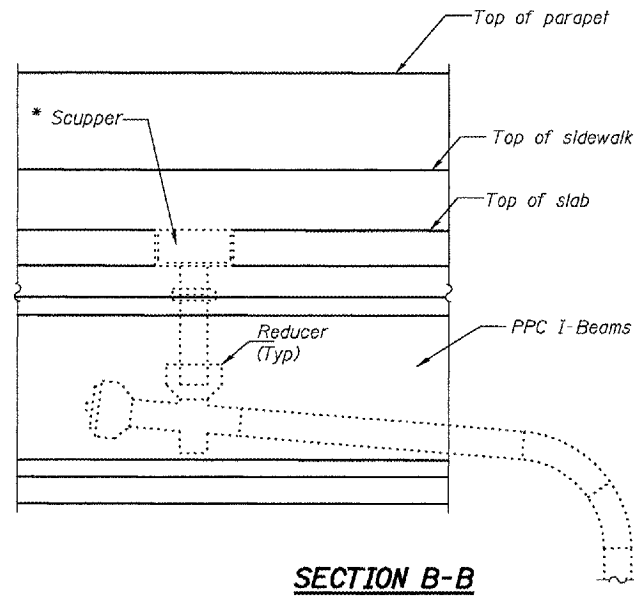
DESIGNED	DAB
CHECKED	SJB
DRAWN	baliva
CHECKED	DAB SJB

May 10, 2005
EXAMINED *John A. Morris*
ENGINEER OF STRUCTURAL SERVICES
PASSED *Ralph E. Anderson*
ENGINEER OF BRIDGES AND STRUCTURES

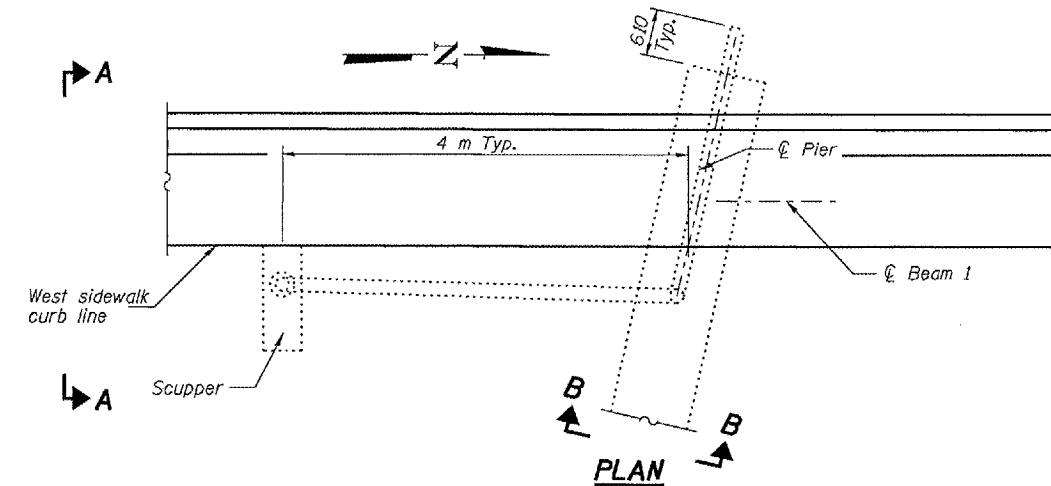
STATE OF ILLINOIS
DEPARTMENT OF TRANSPORTATION

ROUTE NO.	SECTION	COUNTY	TOTAL SHEETS	SHEET NO.
			18	17
FED. ROAD DIST. NO. 7	ILLINOIS	FED. AID PROJECT-	SHEET NO. 10 11 SHEETS	

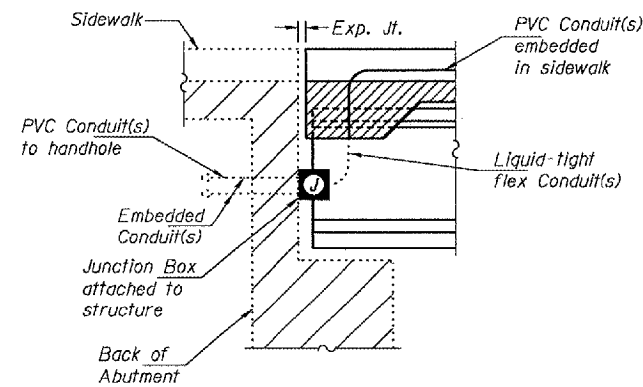
Contract #68492



* The Contractor shall ensure that the scupper is supported at all times during the construction process.



* Scupper & drainage system. (Reuse existing.)



ELECTRICAL NOTES:

The Barrel of the fitting shall be fully embedded in the concrete on one side of the expansion joint.

Conduit bends and radii shall be in accordance with the Standard Specifications.

A cavity opening, if required, shall be 75 mm larger diameter than the deflection sleeve diameter and a maximum depth of half of the deflection sleeve length. The deflection fitting shall be centered in the opening and embedded in the concrete only up to the deflection fitting center.

Junction Box and liquid-tight conduit should be placed behind bollard so that they are not visible to traffic.

All conduits shall be 50 mm, PVC, SCH. 40.

All junction boxes attached to the structure shall be stainless steel, 300 mm x 300 mm x 250 mm - IDOT Std. 813001.

DESIGNED	DAB
CHECKED	SJB
DRAWN	ballva
CHECKED	DAB SJB

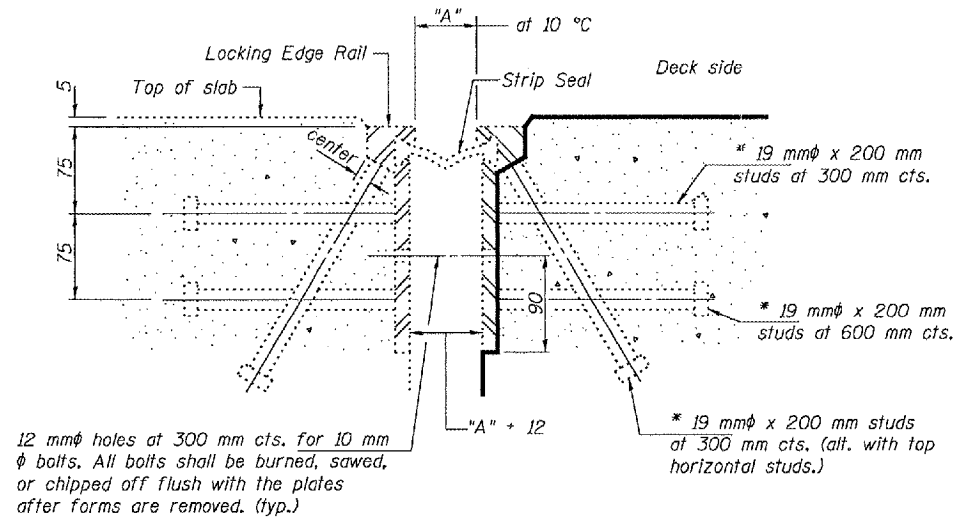
May 10, 2005
 EXAMINED *John A. Morris*
 ENGINEER OF STRUCTURAL SERVICES
 PASSED *Ralph E. Anderson*
 ENGINEER OF BRIDGES AND STRUCTURES

DRAINAGE & ELECTRICAL DETAILS
SHERIDAN ROAD OVER
FAI ROUTE 74 (I-74)
PEORIA COUNTY
SN 072-0193

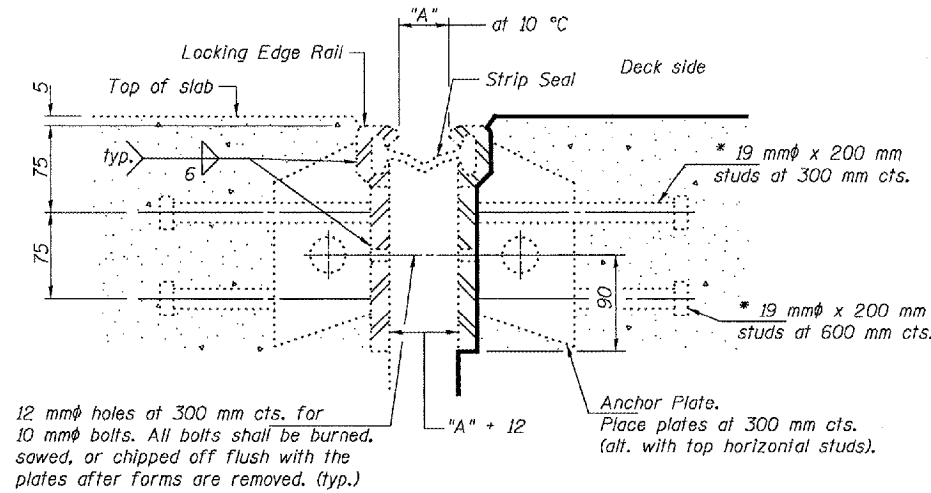
STATE OF ILLINOIS
DEPARTMENT OF TRANSPORTATION

ROUTE NO.	SECTION	COUNTY	SHEET NO.	SHEET
			8	18
FED. ROAD DIST. NO. 7	ILLINOIS	FED. AID PROJECT		

Contract #68492



Required Strip Seal rated movement	"A"
50 mm	42



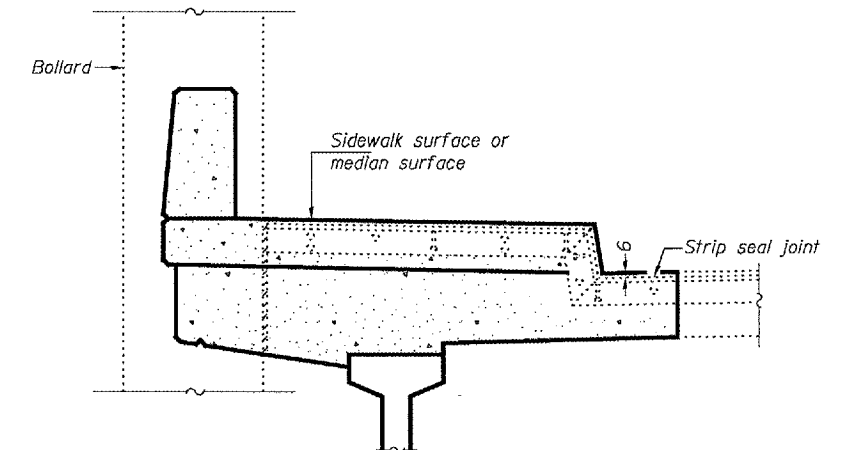
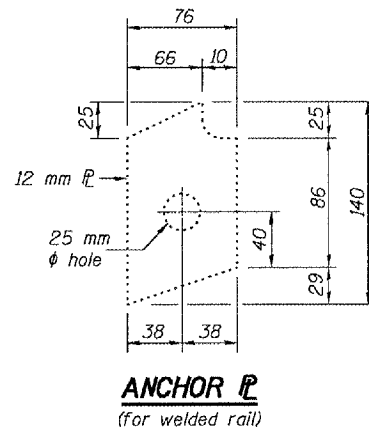
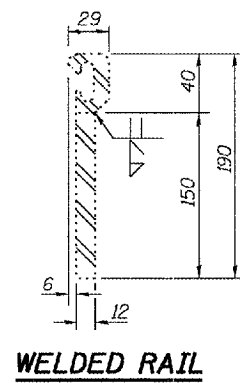
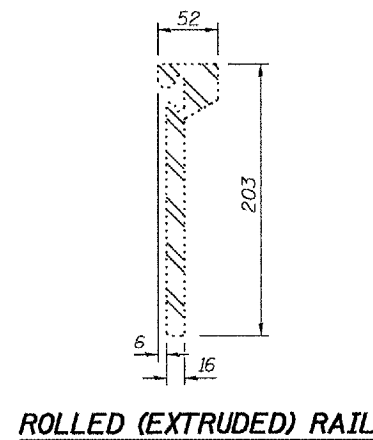
GENERAL NOTES

The strip seal shall be made continuous and shall have a minimum thickness of 6 mm. The configuration of the strip seal shall match the configuration of the Locking Edge Rails.
The height and thickness of the Locking Edge Rails shown are minimum dimensions. The actual configuration of the Locking Edge Rails and matching strip seal may vary from manufacturer to manufacturer. Flanged edge rails will not be allowed.
Locking Edge Rails may be spliced at slope discontinuities and stage construction joints.
The manufacturer's recommended installation methods shall be followed.
The joint opening and deck dimensions detailed on the superstructure are based on a preformed joint seal. If the contractor elects to use the alternate strip seal joint, the opening and deck dimensions shall be modified according to the dimensions detailed on this sheet. Required modifications shall be made at no additional cost to the State.
All dimensions are in millimeters (mm) except as noted.

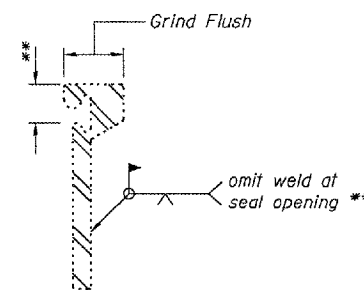
SECTION THRU ROLLED RAIL EXP. JOINT

* Granular or solid flux filled headed studs conforming to Article 1006.32 of the Std. Specs., automatically end welded.

SECTION THRU WELDED RAIL EXP. JOINT



**AT SIDEWALK OR MEDIAN
TYPICAL END TREATMENTS**



LOCKING EDGE RAIL SPLICE

The inside of the locking edge rail groove shall be free of weld residue.

DESIGNED	DAB
CHECKED	SJB
DRAWN	ballva
CHECKED	DAB SJB

May 10, 2005
EXAMINED *John A. Morris*
ENGINEER OF STRUCTURAL SERVICES
PASSED *Ralph E. Anderson*
ENGINEER OF BRIDGES AND STRUCTURES

**THIS SHEET FOR
INFORMATION
ONLY**

**EXPANSION JOINT DETAILS
SHERIDAN ROAD OVER
FAI ROUTE 74 (I-74)
PEORIA COUNTY
SN 072-0193**