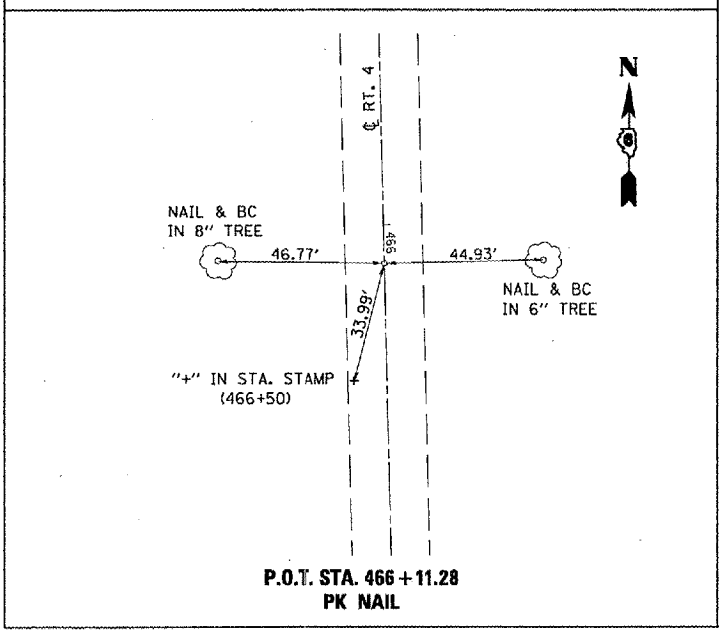
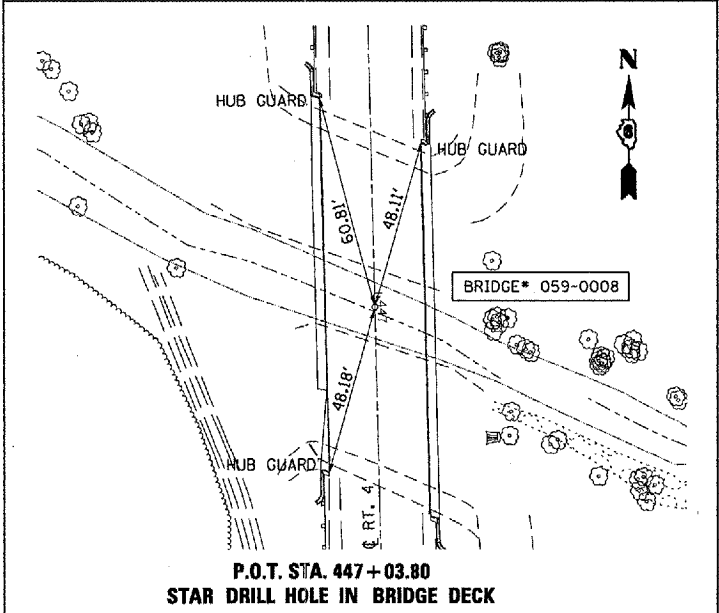
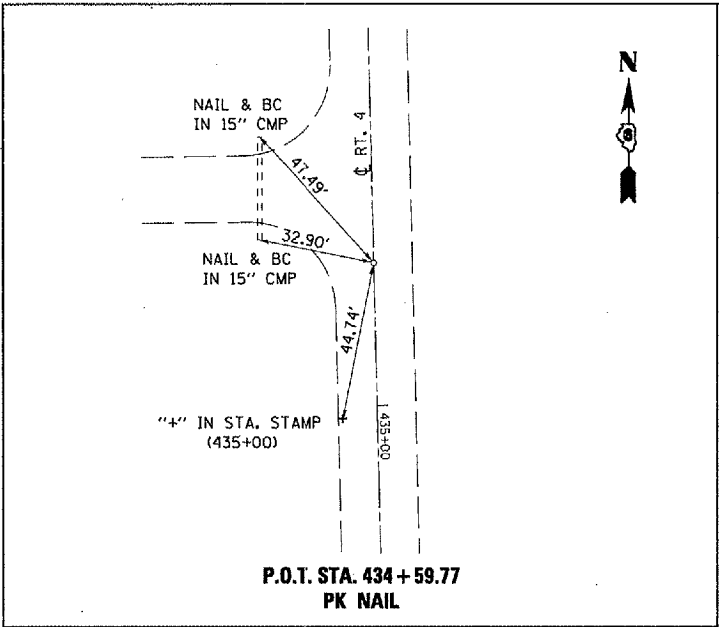


F.A.P. RTE.	SECTION	COUNTY	TOTAL SHEETS	SHEET NO.
662		MACQUEIN	74	43
STA.		TO STA.		
FED. ROAD DIST. NO.		ILLINOIS FED. AID PROJECT		

• (V,T) R-2; S-RS-3

BM #20A : TO REACH FROM INTERSECTION OF DEERFIELD RD. & OLD IL RTE 4, PROCEED SOUTH 507' TO BRIDGE 059-0008 OVER HONEY CREEK, BENCH IS LOCATED ON S.W. CORNER OF HUB GUARD. STA. 447+50.11, 15.2' RT. ELEV. = 602.96



REVISIONS	
NAME	DATE

ILLINOIS DEPARTMENT OF TRANSPORTATION

BENCHMARKS & CROSS TIES

SCALE: VERT. _____
 HORIZ. _____

DATE _____ DRAWN BY _____
 CHECKED BY _____

•DGN-SPEC•
 •DATE-TIME•
 •REF 01