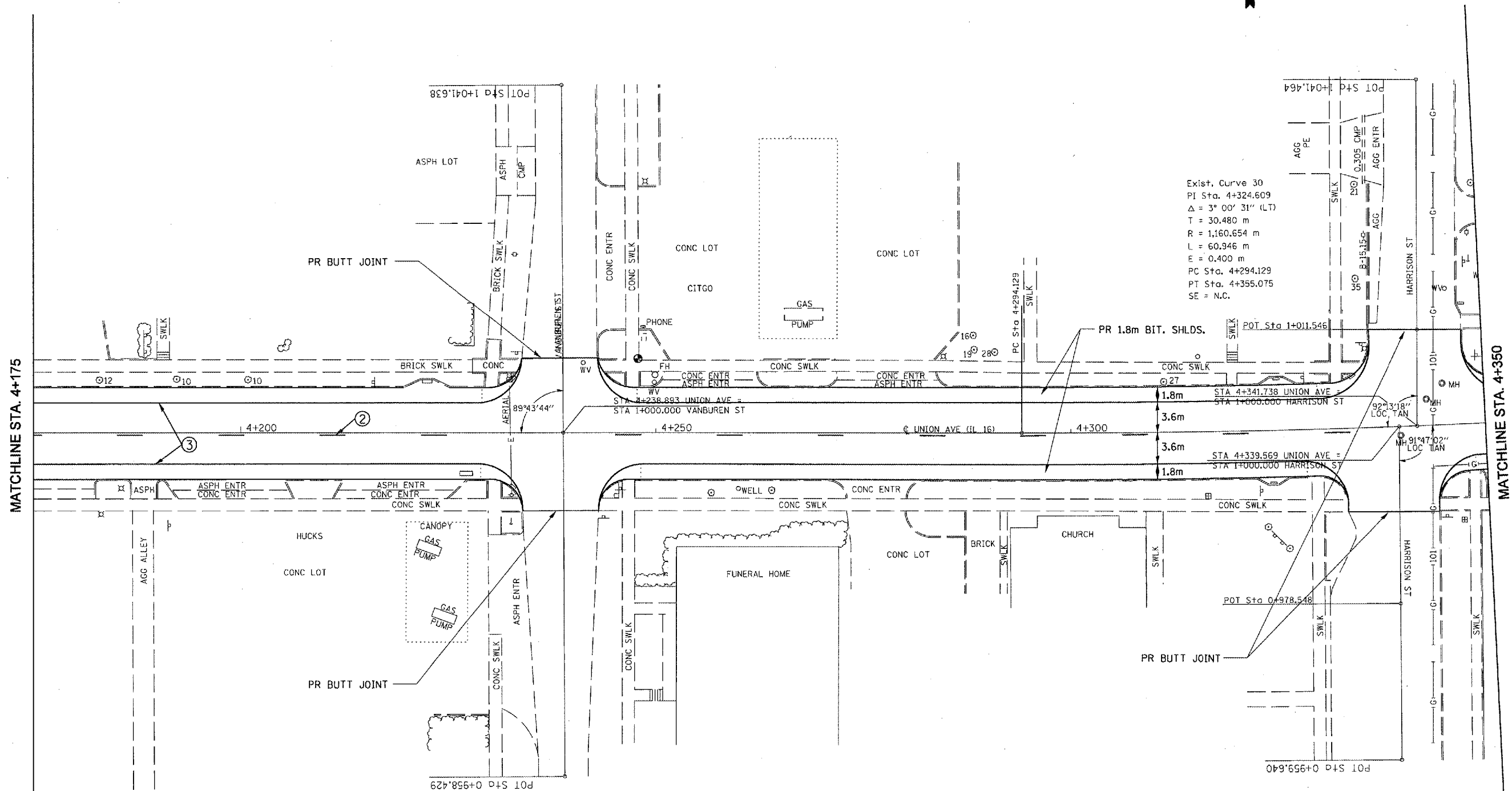


|                     |         |                           |              |           |
|---------------------|---------|---------------------------|--------------|-----------|
| F.A.P. RTE.         | SECTION | COUNTY                    | TOTAL SHEETS | SHEET NO. |
| 325                 |         | MONTGOMERY                | 39           | 15        |
| STA. 4+175          |         | TO STA. 4+350             |              |           |
| FED. ROAD DIST. NO. |         | ILLINOIS FED. AID PROJECT |              |           |

• 21RS-4; 24RS-7  
CONTRACT NO. 72444



Exist. Curve 30  
PI Sta. 4+324.609  
 $\Delta = 3^{\circ} 00' 31''$  (LT)  
T = 30,480 m  
R = 1,160.654 m  
L = 60,946 m  
E = 0.400 m  
PC Sta. 4+294.129  
PT Sta. 4+355.075  
SE = N.C.

MATCHLINE STA. 4+175

MATCHLINE STA. 4+350

**LEGEND**

- ① PR THERMOPLASTIC PAVEMENT MARKING, LINE - 125mm (SOLID YELLOW)
- ② PR THERMOPLASTIC PAVEMENT MARKING, LINE - 125mm (SKIP-DASH YELLOW)
- ③ PR THERMOPLASTIC PAVEMENT MARKING, LINE - 125mm (SOLID WHITE)
- ④ PR THERMOPLASTIC PAVEMENT MARKING, LINE - 150mm (SOLID WHITE)
- ⑤ PR PREFORMED PLASTIC PAVEMENT MARKING, LINE - 300mm (SOLID YELLOW)
- ⑥ PR PREFORMED PLASTIC PAVEMENT MARKING, LINE - 600mm (SOLID WHITE)
- ⑦ PR PREFORMED PLACTIC PAVEMENT MARKING, LETTERS & SYMBOLS (WHITE)

| REVISIONS |      |
|-----------|------|
| NAME      | DATE |
|           |      |
|           |      |
|           |      |
|           |      |
|           |      |
|           |      |
|           |      |
|           |      |
|           |      |
|           |      |

ILLINOIS DEPARTMENT OF TRANSPORTATION  
**PLAN SHEETS**  
**SECTION : 21RS-4; 24RS-7**  
**MONTGOMERY COUNTY**  
DRAWN BY \_\_\_\_\_  
CHECKED BY \_\_\_\_\_  
DATE \_\_\_\_\_