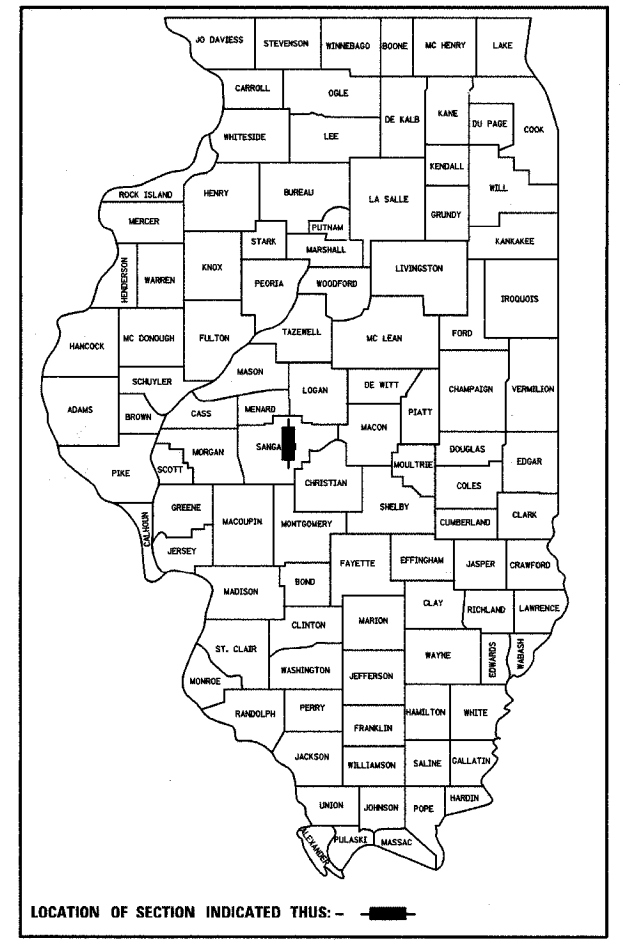


STATE OF ILLINOIS
DEPARTMENT OF TRANSPORTATION
DIVISION OF HIGHWAYS
**PROPOSED
HIGHWAY PLANS**
FAP ROUTE 664 (WABASH AVE)
FAP ROUTE 664 (MACARTHUR BLVD)
FAU 7989 (S GRAND AVE)
SECTION DIST. 6 RESURFACING 2005-1
PROJECT: F-0005 (460)
SANGAMON COUNTY
C-96-506-06

F.A.P. RTE.	SECTION	COUNTY	TOTAL SHEETS	SHEET NO.
664	*	SANGAMON	61	1

* D-6 RESURFACING 2005-1
CONTRACT NO. 72790

D-96-522-03



LOCATION OF SECTION INDICATED THUS: - [black rectangle] -

FOR INDEX OF SHEETS, SEE SHEET NO. 2

HIGHWAY CLASSIFICATION

FAU 7989 (S GRAND AVE)

MACARTHUR BLVD TO 2ND ST.
CLASSIFICATION: MINOR ARTERIAL
ADT = 16100 (2006) PV = 95.0%
ADT = 19300 (2026) SU = 3.0%
POSTED SPEED: 30 MPH MU = 2.0%

FAP 664 (MACARTHUR BLVD)

HIGHLAND AVE TO S GRAND AVE
CLASSIFICATION: OTHER PRINCIPLE ARTERIAL
ADT = 23200 (2006) PV = 94.0%
ADT = 27900 (2026) SU = 4.0%
POSTED SPEED: 30 MPH MU = 2.0%

FAP 664 (WABASH AVE)

W. WHITE OAKS ENTR TO CORBIN ST
CLASSIFICATION: OTHER PRINCIPLE ARTERIAL
ADT = 25700 (2006) PV = 93.0%
ADT = 30800 (2026) SU = 4.0%
POSTED SPEED: 40 MPH MU = 3.0%

FAP 664 (WABASH AVE)

CORBIN ST TO PARK AVE
CLASSIFICATION: OTHER PRINCIPLE ARTERIAL
ADT = 26500 (2006) PV = 93.0%
ADT = 31800 (2026) SU = 4.0%
POSTED SPEED: 35 MPH MU = 3.0%

BEGIN SECTION STA. 49+45 SOUTH GRAND AVE. (WEST)

END SECTION STA. 12+64 MACARTHUR BLVD

STA. 50+58.97 SOUTH GRAND AVE. (WEST) = STA. 0+48.13 SOUTH GRAND AVE. (EAST) = STA. 12+07.90 MACARTHUR BLVD.

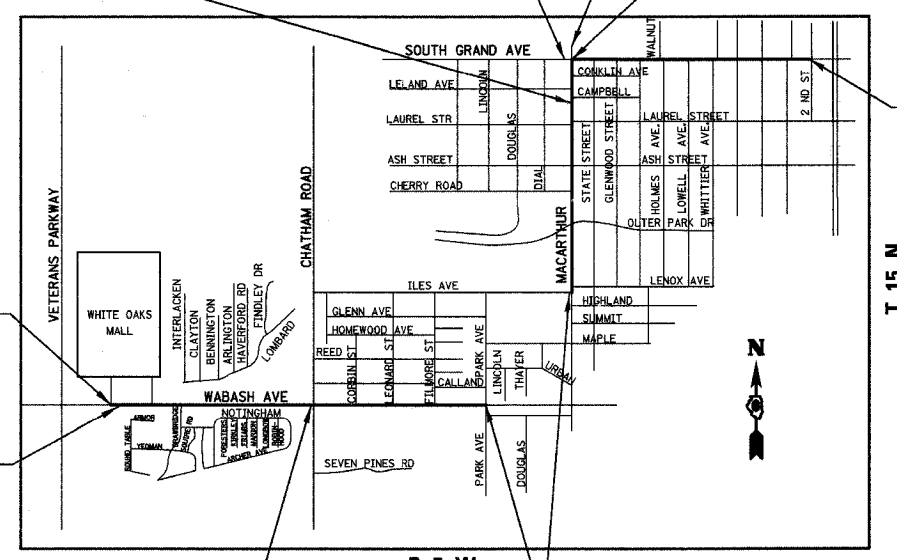
STATION EQUATION #3
STA. 687+04.77 BK = STA. 0+00 AH
MACARTHUR BLVD.

STATION EQUATION #1
STA 521+74.38 (BK) = STA 521+79.92 (AH)
WABASH AVE

BEGIN SECTION STA. 521+87 WABASH AVE.

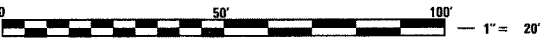
STATION EQUATION #2
STA 566+80.61 (BK) = STA 566+81.50 (AH)
WABASH AVE

OMISSION - WABASH AVE STA. 604+71 TO MACARTHUR BLVD. STA. 639+27



END SECTION STA. 40+90 SOUTH GRAND AVE. (EAST)

HOMER L. CHASTAIN & ASSOCIATES, LLP
CONSULTING ENGINEERS
DECATUR (317) 422-8544
CHICAGO (773) 714-0060
184-001397



FULL SIZE PLANS HAVE BEEN PREPARED USING STANDARD ENGINEERING SCALES. REDUCED SIZED PLANS WILL NOT CONFORM TO STANDARD SCALES. IN MAKING MEASUREMENTS ON REDUCED PLANS, THE ABOVE SCALES MAY BE USED.

J.U.L.I.E.
JOINT UTILITY LOCATION INFORMATION FOR EXCAVATION
1-800-892-0123

CONTRACT NO. 72790

PROJECT LENGTH:
WABASH = 8,284 FEET
MACARTHUR = 6,041.77 FEET
SOUTH GRAND = 4,155.84 FEET

GROSS LENGTH = NET LENGTH = 18,481.61 FEET = 3.500 MILES



EXPIRES 11-30-05

STATE OF ILLINOIS
DEPARTMENT OF TRANSPORTATION
DIVISION OF HIGHWAYS

SUBMITTED April 20 2005
Chris V. R... District Engineer

May 13 2005
Mike Hine
ENGINEER OF DESIGN AND ENVIRONMENT

May 13 2005
Victor Mader...
DIRECTOR, DIVISION OF HIGHWAYS

**PRINTED BY THE AUTHORITY
OF THE STATE OF ILLINOIS**

PROJECT ENGINEER: JOHN BARANZELLI (217) 782-5503
SQUAD LEADER: RENE CABRERA (217) 557-9062