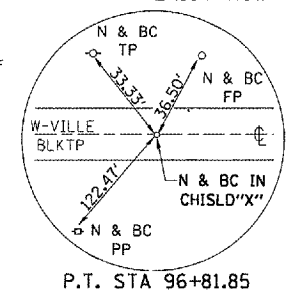
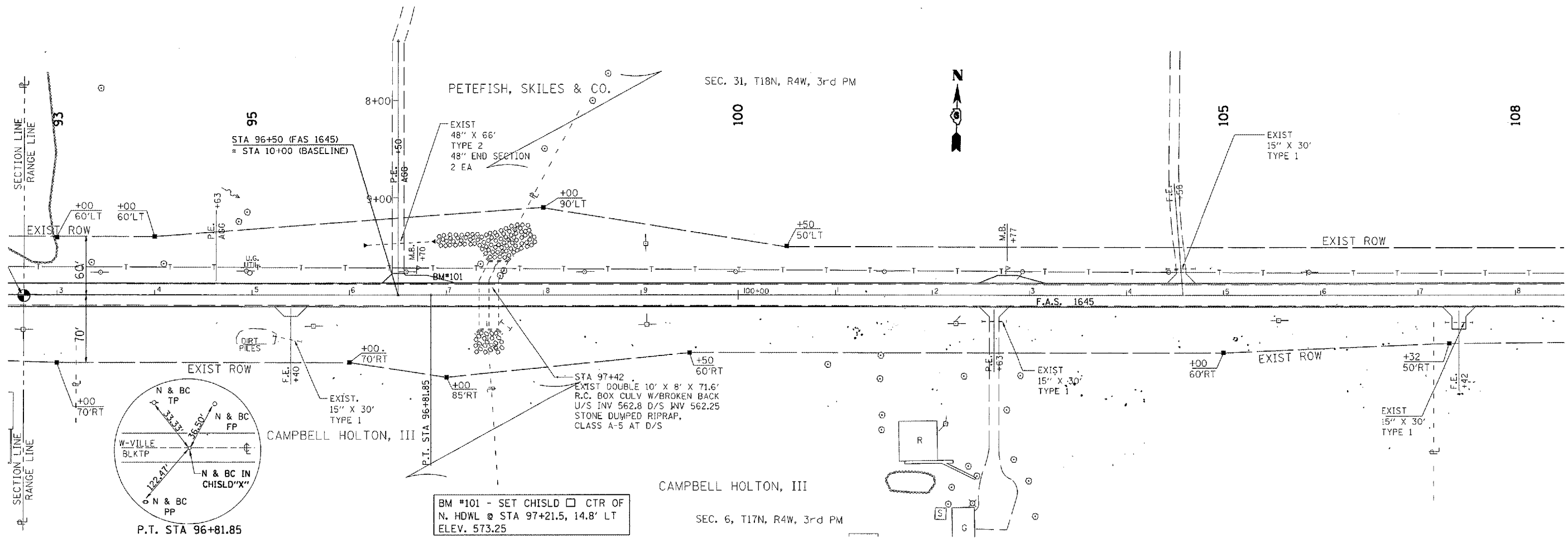


| F.A.S. FILE | SECTION | COUNTY | TOTAL SHEETS | SHEET NO. |
|-----------------------|---------|----------------|------------------|-----------|
| 1645 | 150RS | SANGAMON | 28 | 12 |
| STA. 93+00 | | TO STA. 108+00 | | |
| FED. ROAD DIST. NO. 1 | | ILLINOIS | FED. AID PROJECT | |

CONTRACT NO. 72876

| PLAN | DATE |
|----------|------|
| SURVEYED | |
| ALIGNED | |
| CHECKED | |
| BY | |
| NO. | |

| PROFILE | DATE |
|---------|------|
| REVISED | |
| CHANGED | |
| BY | |
| NO. | |



BM *101 - SET CHISLD □ CTR OF N. HDWL @ STA 97+21.5, 14.8' LT ELEV. 573.25

ILLINOIS DEPARTMENT OF TRANSPORTATION
 F.A.S. ROUTE 1645
 SECTION 150RS
 SANGAMON COUNTY