

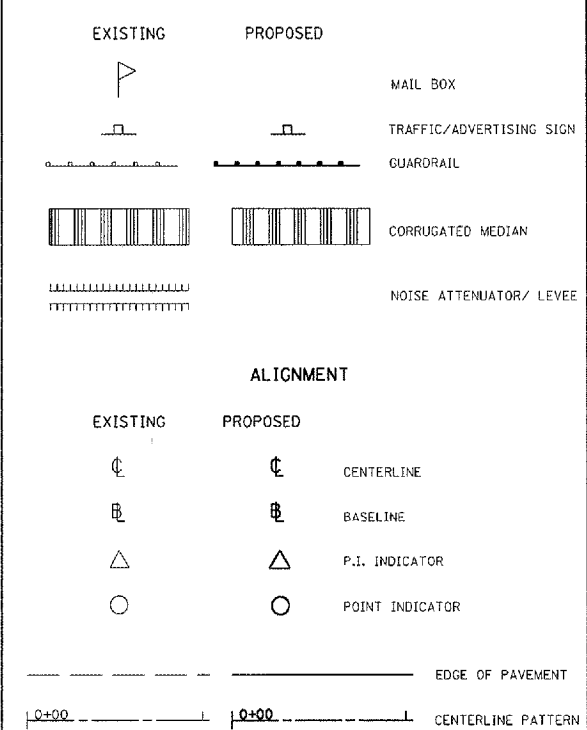
CADD STANDARD SYMBOLS

NOTE: THESE SYMBOLS SHOWN ARE IN ADDITION TO OR REPLACE SYMBOLS SHOWN ON STANDARD 1686 (STANDARD SYMBOLS AND ABBREVIATIONS).

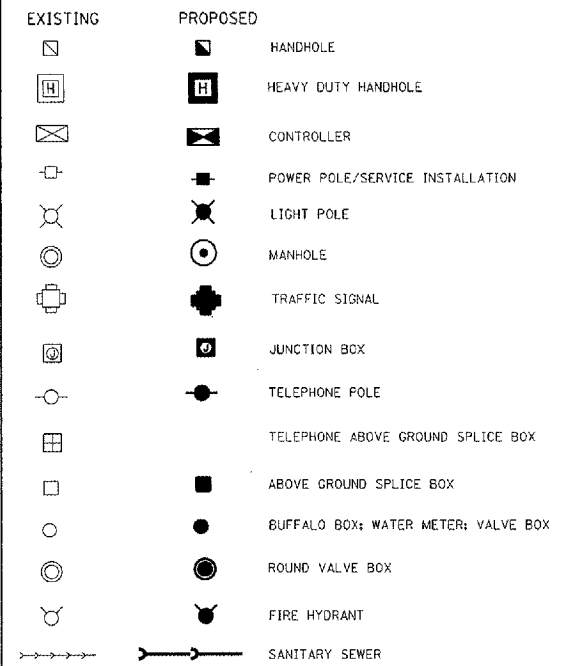
F.A. NO.	SECTION	COUNTY	TOTAL SHEETS	SHEET NO.
1645	150RS	SANGAMON	28	28
STA.		TO STA.		
FED. ROAD DIST. NO. 5		MILES		FED. AID PROJECT

72876

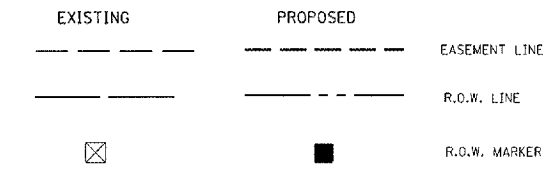
PAVEMENT PLAN ITEMS



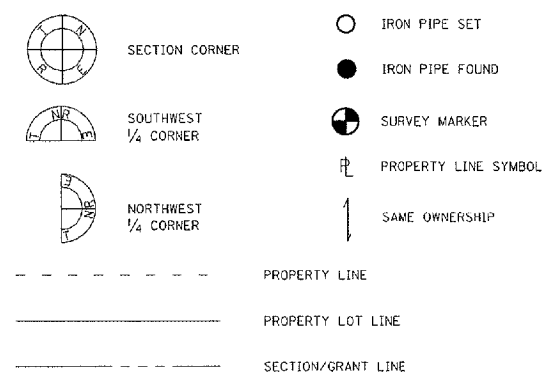
GENERAL UTILITY STRUCTURES



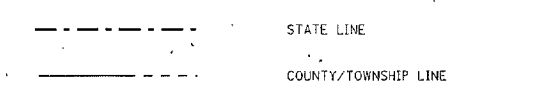
RIGHT OF WAY



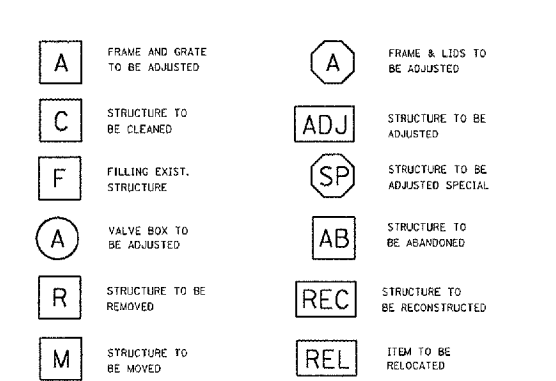
PRIVATE BOUNDARIES



POLITICAL BOUNDARIES



STRUCTURE ADJUSTMENT



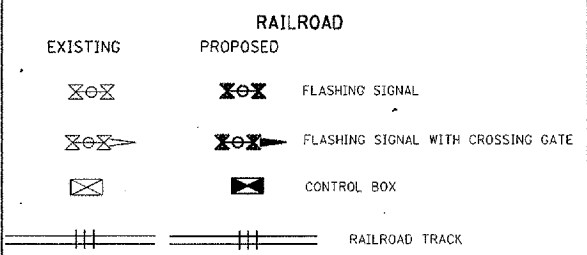
NOTE: IF ADJUSTMENT OR RECONSTRUCTION IS REQUIRED, PLACE [A] OR [C] ADJACENT TO THE ITEM SYMBOL. IF A NEW CASTING IS REQUIRED, SHOW CASTING NUMBER. USE P FOR OPEN AND C FOR CLOSED LID. EXAMPLE- CATCH BASIN TO BE ADJUSTED WITH NEW TYPE S FRAME, OPEN LID = [A] -SP

NOTE: FOR PROPOSED STRUCTURE, FIRST CHARACTER DENOTES TYPE OF STRUCTURE. USE [A] FOR SPECIAL DESIGN. SECOND CHARACTER DENOTES NUMBER OF FRAME OR GRATE. EXAMPLE- PROPOSED MANHOLE TYPE A WITH TYPE 1 FRAME AND CLOSED LID = [A]-1C

- AC - Acre
- AGG - Aggregate
- AGS - Auxiliary Gas Valve (Service)
- ASPH - Asphalt
- B-B - Back to Back
- BIND - Binder
- BIT - Bituminous
- BLOG - Building
- BLVD - Boulevard
- BM - Bench Mark
- BRK - Brick
- CB - Catch Basins
- C-C - Center to Center
- C-E - Centerline to Edge of Pavement
- C-F - Centerline to Face of Curb
- CE - Commercial Entrance
- CHSLD - Chiseled
- CIP - Cast Iron Pipe
- CL - Closed Lid
- CMP - Corrugated Metal Pipe
- COMB - Combination
- CONC - Concrete
- CONT'D - Continued
- CONT - Continuous
- CONST - Construct
- COR - Corner
- CORR - Corrugated
- CP - Clay Pipe
- CSE - Course
- CT - Coat
- CULV - Culvert
- CU YD or CY - Cubic Yard
- C&G - Curb & Gutter
- DC - Depressed Curb
- DIA - Diameter
- DOM - Domestic
- DR - Driveway
- DSFL - Downstream Flow Line
- EA - Each
- E-E - Edge to Edge
- ELEV or EL - Elevation
- EP - Edge of Pavement
- EXC - Excavation
- EXIST - Existing
- EXPWAY - Expressway
- F-F - Face to Face
- FDN - Foundation
- FE - Field Entrance
- FH - Fire Hydrant
- FL - Flow Line
- FP - Fence Post
- FR - Frame
- F&G - Frame & Grate
- GAL - Gallon
- GR - Grate
- GRAN - Granular
- GRAV - Gravel
- H - House
- HD - Heavy Duty
- HDW - Headwall
- HH - Handhole
- HORIZ - Horizontal
- HWY - Highway
- IMP - Improvement
- IN DIA - Inch Diameter
- INL - Inlet
- INV - Invert
- IP - Iron Pipe or Iron Pin
- IR - Iron Rod
- JT - Joint
- L - Lane
- LF or LIN FT - Lineal Feet or Linear Feet
- LP - Light Pole
- L SUM - Lump Sum
- LT - Left
- MACH - Machine
- MATL - Material
- MED - Median
- METH - Method
- MH - Manhole
- MIX - Mixture
- MOD - Modified
- N&BC - Nail and Bottle Cap
- N&C - Nail and Cap
- N&W - Nail and Washer
- OL - Open Lid
- PAVT - Pavement
- PC - Pipe Culvert (Existing)
- PCC - Portland Cement Concrete
- PE - Private Entrance
- PL - Property Line
- PP - Power Pole
- PR - Prime
- PROP - Proposed
- R - Radius
- RCCP - Reinforced Concrete Culvert Pipe
- RD - Road
- REF - Reflective
- REINF - Reinforcement
- REM - Removal
- REPL - Replacement
- REST - Restaurant
- RESURF - Resurfacing
- ROW - Right of Way
- RR - Railroad
- RRS - Railroad Spike
- RT - Right
- RTE - Route
- SANS - Sanitary Sewer
- SD - Special Ditch
- SEC - Section
- SEED - Seeding
- SF or SQ FT - Square Feet
- SHAP - Shaping
- SHLD - Shoulders
- SM - Survey Marker
- SOD - Sodding
- SPBGR - Steel Plate Beam Guardrail
- SPL - Special
- SS - Storm Sewer (Existing)
- ST - Street
- STA - Station
- STD - Standard
- SURF - Surface
- SW - Sidewalk
- SY or SQ YD - Square Yard
- TBE - To Be Extended
- TBR - To Be Removed
- TBS - To Be Saved
- TD - Tile Drain
- TEL - Telephone
- TP - Telephone Pole
- TWP - Township
- T- - Type- (- = Specifies Type)
- USFL - Upstream Flowline
- VV - Valve Vault
- WM - Watermain
- WV - Water Valve

CURVE DATA

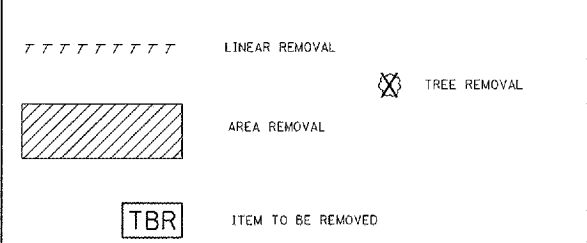
- Δ - Deflection Angle
- D - Degree of Curve
- T - Tangent Length
- L - Curve Length
- R - Radius of Curve
- E - External Distance
- SE - Superelevation (ft. per ft. of width)
- PC - Point of Curvature
- PI - Point of Intersection
- PT - Point of Tangency
- POT - Point on Tangent
- PCC - Point of Compound Curvature
- PRC - Point of Reverse Curvature
- VPI - Vertical Curve Point of Intersection



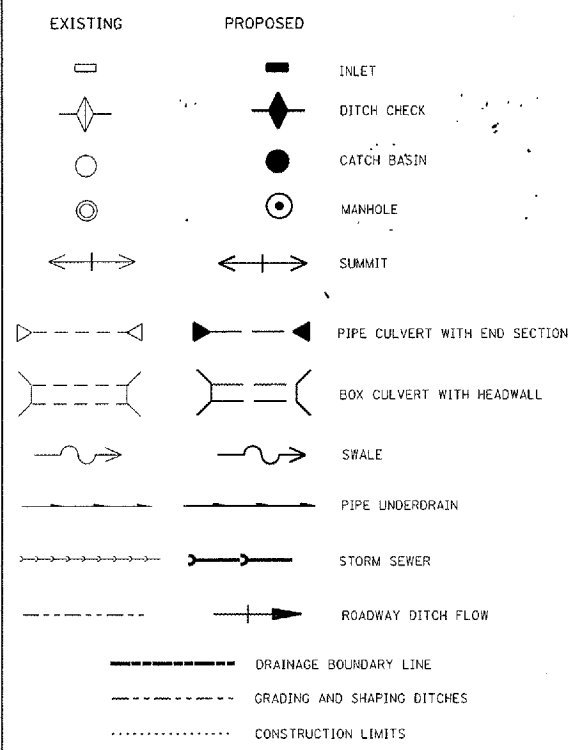
VEGETATION FEATURES



REMOVAL ITEMS



DRAINAGE STRUCTURES



ILLINOIS DEPARTMENT OF TRANSPORTATION
CADD STANDARD SYMBOLS

F.A.S. ROUTE 1645
SECTION 150R
SANGAMON COUNTY

REVISIONS	
NAME	DATE
CAD	4-10-89