

STATE OF ILLINOIS
DEPARTMENT OF TRANSPORTATION
DIVISION OF HIGHWAYS
**PROPOSED
HIGHWAY PLANS**

F.A.S. RTE. 1645	SECTION 150 RS	COUNTY SANGAMON	TOTAL SHEETS 28	SHEET NO. 1
---------------------	-------------------	--------------------	--------------------	----------------

CONTRACT NO. 72876

FOR INDEX OF SHEETS, SEE SHEET NO. 2

HIGHWAY CLASSIFICATION

FAS 1645

FUNCTIONAL CLASS - MAJOR COLLECTOR

ADT (2004) - 7200

ADT (2005) - 7300

ADT (2025) - 8700

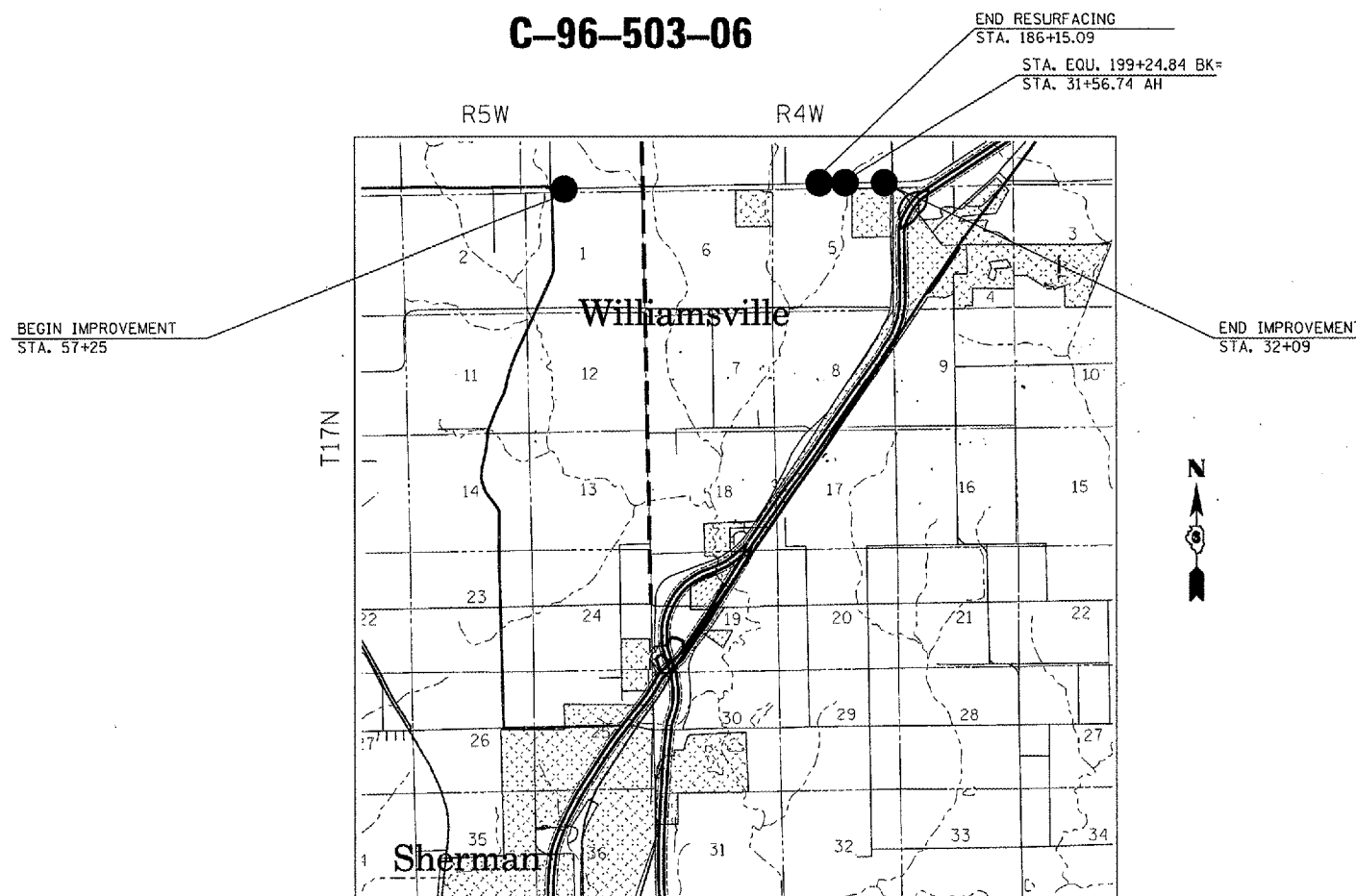
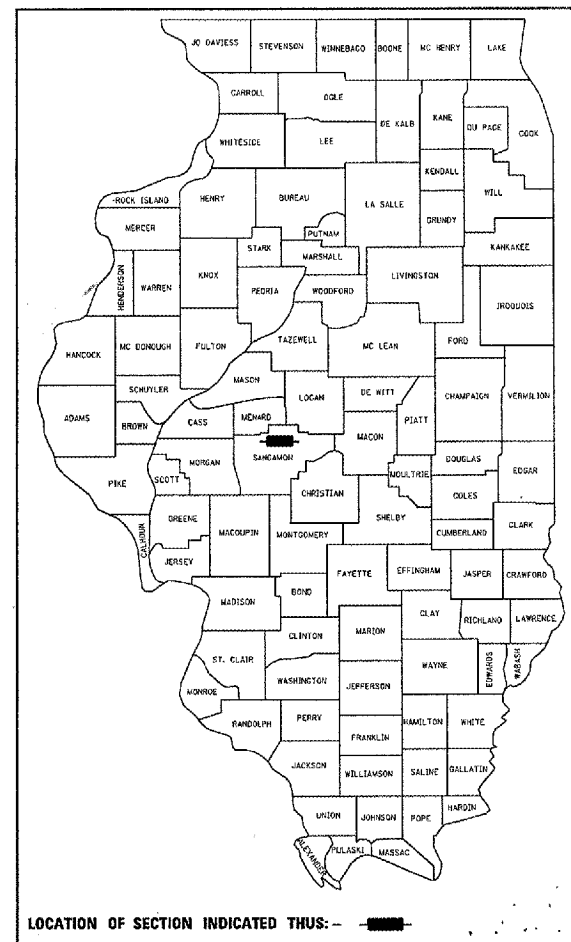
PV - 71.7%

SU - 13.4%

MU - 14.9%

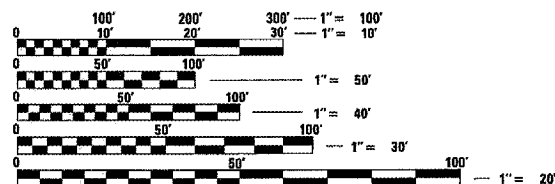
FAS ROUTE 1645 (IL 123)
SECTION 150 RS
PROJECT: RS-1645(106)
SANGAMON COUNTY
C-96-503-06

D-96-510-04



PROJECT LOCATION

TOTAL LENGTH OF SECTION = 12890.1 FT = 2.4 MILES



FULL SIZE PLANS HAVE BEEN PREPARED USING STANDARD ENGINEERING SCALES. REDUCED SIZED PLANS WILL NOT CONFORM TO STANDARD SCALES. IN MAKING MEASUREMENTS ON REDUCED PLANS, THE ABOVE SCALES MAY BE USED.

J.U.L.I.E.
JOINT UTILITY LOCATION INFORMATION FOR EXCAVATION
1-800-892-0123

STATE OF ILLINOIS
DEPARTMENT OF TRANSPORTATION
DIVISION OF HIGHWAYS

SUBMITTED March 22, 2005
Chris H. Reed DISTRICT ENGINEER

May 13, 2005
Mike Hene ENGINEER OF DESIGN AND ENVIRONMENT

May 13, 2005
Victor Modere DIRECTOR, DIVISION OF HIGHWAYS

**PRINTED BY THE AUTHORITY
OF THE STATE OF ILLINOIS**

PROJECT ENGINEER: JOHN BARANZELLI (217)762-5503
SQUAD LEADER: VICTOR T. YOUNG (217)557-7897

CONTRACT NO. 72876

F. A. DIST.	SECTION	COUNTY	TOTAL SHEETS	SHEET NO.
1645	150RS	SANGAMON	28	2
STA.		TO STA.		
FED. ROAD DIST. NO. 5		ILLINOIS	FED. AID PROJECT	

CONTRACT NO. 72876

INDEX OF SHEETS

- 1 COVER SHEET
- 2 INDEX, STANDARDS LIST, COMMITMENTS & GENERAL NOTES
- 3-5 SUMMARY OF QUANTITIES
- 6 TYPICAL SECTIONS
- 7-8 SCHEDULE OF QUANTITIES
- 9-19 PLAN SHEETS
- 20-21 TRAFFIC CONTROL PLAN
- 22 PAVEMENT REMOVAL & REPLACEMENT DETAIL
- 23-28 DISTRICT 6 DETAILS

GENERAL NOTES:

WHERE SECTION OR SUBSECTION MONUMENTS ARE ENCOUNTERED, THE ENGINEER SHALL BE NOTIFIED BEFORE SUCH MONUMENTS ARE REMOVED. THE CONTRACTOR SHALL PROTECT AND CAREFULLY PRESERVE ALL PROPERTY MARK AND MONUMENTS UNTIL THE OWNER AND AUTHORIZED SURVEYOR OR AGENT HAS WITNESSED OR OTHERWISE REFERENCED THEIR ACTION.

THE NOMINAL THICKNESS FOR BASE AND SURFACE COURSE IS SHOWN ON THE TYPICAL SECTIONS, STANDARDS, SCHEDULES, OR SPECIAL DETAILS. THE CONSTRUCTED THICKNESS OF THE ABOVE ITEMS SHALL NOT BE LESS THAN 90 PERCENT OF THE NOMINAL THICKNESS AT ANY LOCATION.

THE THICKNESS OF BITUMINOUS MIXTURE SHOWN ON THE PLANS IS THE NOMINAL THICKNESS. DEVIATIONS FROM THE NOMINAL THICKNESS WILL BE PERMITTED WHEN SUCH DEVIATIONS OCCUR DUE TO IRREGULARITIES IN THE EXISTING SURFACE OR BASE ON WHICH THE BITUMINOUS MIXTURE IS BEING PLACED.

THE LOCATIONS OF EXISTING WATER MAINS, GAS MAINS, SEWERS, ELECTRIC POWER LINES, TELEPHONE LINES AND OTHER UTILITIES AS SHOWN ON THE PLANS ARE BASED ON THE BEST INFORMATION AVAILABLE, BUT THEY ARE NOT GUARANTEED. ALL UTILITY LOCATIONS SHOWN ARE SUPPLIED BY THE UTILITY COMPANIES. IT IS THE CONTRACTOR'S RESPONSIBILITY TO ASCERTAIN THEIR EXACT LOCATION FROM THE UTILITY COMPANIES AND BY FIELD INSPECTION.

ACCESS MUST BE MAINTAINED TO ALL EXISTING PROPERTIES DURING CONSTRUCTION PER ARTICLE 107.09 UNLESS ARRANGEMENTS ARE MADE IN WRITING BY THE CONTRACTOR WITH THE PROPERTY OWNERS WITH A COPY TO THE ENGINEER FOR SHORT-TERM CLOSURES.

ALL ELEVATIONS SHOWN ON THE PLANS ARE ESTABLISHED FROM U.S.G.S. MEAN SEA LEVEL DATUM.

CONTINUOUS PAVING OPERATIONS ON THE MAIN ROADWAY SHALL BE MAINTAINED AT ALL TIMES DURING THE CONSTRUCTION OF THE BITUMINOUS SURFACE. NO INTERRUPTIONS FOR SIDE ROADS, ENTRANCE, TURN LANES, ETC. WILL BE ALLOWED.

HIGHWAY STANDARDS

- 406201
- 442201-01
- 482011-01
- 701006-02
- 701301-02
- 701306-01
- 701311-02
- ~~701336-03~~
- 701501-03
- 701502-01
- 702001-05
- 780001-01
- 781001-02
- 000001-04

RATES OF APPLICATION

BITUMINOUS MATERIALS (PRIME COAT) ON AGGREGATE	0.001425 TON/SQYD
BITUMINOUS MATERIALS (PRIME COAT) ON BITUMINOUS	0.00038 TON/SQYD
AGGREGATE (PRIME COAT)	0.002 TON/SQYD
BITUMINOUS CONCRETE BINDER & SURFACE COURSE (112 lbs)	0.056 TON/SQYD INCH

MIXTURE REQUIREMENTS

LOCATION(S):	SEE SHEET #6	SEE SHEET #22	SEE SHEET #22
Mixture Use(s):	BITUMINOUS SURFACE	BITUMINOUS BINDER	BITUMINOUS SURFACE
PG:	PG 64-22	PG 64-22	PG 64-22
RAP %: (Max)	15%	10%	10%
Design Air Voids :	4.0% @ N DESIGN = 50	4.0% @ N DESIGN = 90	4.0% @ N DESIGN = 90
Mixture Composition: (Gradation Mixture)	IL 9.5 OR 12.5	IL 19	IL 9.5 OR 12.5
Friction Aggregate:	MIX "C"	N/A	MIX "D"

DISTRICT SIX	
EXAMINED	March 5 2005 <i>[Signature]</i>
OPERATIONS ENGINEER	
EXAMINED	Mar 2 2005 <i>[Signature]</i>
PROGRAM IMPLEMENTATION ENGINEER	
EXAMINED	MARCH 22 2005 <i>[Signature]</i>
PROGRAM DEVELOPMENT ENGINEER	

ILLINOIS DEPARTMENT OF TRANSPORTATION
INDEX, STANDARDS &
GENERAL NOTES
F.A.S. ROUTE 1645
SECTION 150RS
SANGAMON COUNTY

Rev.

**ILLINOIS DEPARTMENT OF TRANSPORTATION
SUMMARY OF QUANTITIES**

F.A RTE.	SECTION	COUNTY	TOTAL SHEET	SHEET NO.
1645	150RS	SANGAMON	28	3
STA.		TO STA.		
FED.ROAD DIST.NO.		ILLINOIS	FED. AID PROJECT	
CONTRACT NO. 72876				

LOCATION OF WORK				80% FED 20% STATE			
SUMMARY OF QUANTITIES				CONSTRUCTION TYPE CODE			
PAY CODE	PAY ITEM	UNIT	TOTAL QUANTITY	1000			
X4066414	BITUMINOUS CONCRETE SURFACE COURSE, SUPER PAVE, MIX "C", N50	TON	4,167.0	4,167.0			
X4066428	BITUMINOUS CONCRETE SURFACE COURSE, SUPER PAVE, MIX "D", N90	TON	26.0	26.0			
X4069126	BITUMINOUS CONCRETE BINDER COURSE SUPERPAVE, IL-19.0, N90 - 13"	SQ YD	230.5	230.5			
X4409400	BITUMINOUS SURFACE REMOVAL - 1 3/4"	SQ YD	37,562.0	37,562.0			
35102400	AGGREGATE BASE COURSE TYPE B 12"	SQYD	230.5	230.5			
35800100	PREPARATION OF BASE	SQYD	361.0	361.0			
40600200	BITUMINOUS MATERIAL (PRIME COAT)	TON	14.2	14.2			
40600300	AGGREGATE (PRIME COAT)	TON	74.4	74.4			
40600895	CONSTRUCTING TEST STRIP	EACH	1.0	1.0			
40600980	BITUMINOUS SURFACE REMOVAL - BUTT JOINT	SQ YD	266.6	266.6			
40600990	TEMPORARY RAMP	SQ YD	214.0	214.0			
40800020	BITUMINOUS MATERIAL (PRIME COAT)	TON	0.1	0.1			
40800030	AGGREGATE (PRIME COAT)	TON	0.7	0.7			

* SPECIALTY ITEM

ILLINOIS DEPARTMENT OF TRANSPORTATION

SUMMARY OF QUANTITIES

**ILLINOIS DEPARTMENT OF TRANSPORTATION
SUMMARY OF QUANTITIES**

F.A. RTE.	SECTION	COUNTY	TOTAL SHEET	SHEET NO.
1645	150RS	SANGAMON	28	4
STA.		TO STA.		
FED.ROAD DIST.NO.		ILLINOIS	FED. AID PROJECT	
CONTRACT NO. 72876				

LOCATION OF WORK				80% FED 20% STATE			
SUMMARY OF QUANTITIES				CONSTRUCTION TYPE CODE			
PAY CODE	PAY ITEM	UNIT	TOTAL QUANTITY	1000			
40800040	INCIDENTAL BITUMINOUS SURFACING	TON	40.3	40.3			
44000100	PAVEMENT REMOVAL	SQ YD	230.5	230.5			
48101200	AGGREGATE SHOULDERS, TYPE B	TON	705.0	705.0			
67000400	ENGINEER'S FIELD OFFICE, TYPE A	CAL MO	2.0	2.0			
67100100	MOBILIZATION	L SUM	1.0	1.0			
70100460	TRAFFIC CONTROL AND PROTECTION, STANDARD 701306	L SUM	1.0	1.0			
70103815	TRAFFIC CONTROL SURVEILLANCE	CAL DAY	5.0	5.0			
70300100	SHORT-TERM PAVEMENT MARKING	FOOT	3,867.0	3,867.0			
70300610	TEMPORARY PAINT PAVEMENT MARKING - LETTERS & SYMBOLS	SQ FT	46.8	46.8			
70300630	TEMPORARY PAINT PAVEMENT MARKING-LINE 5"	FOOT	33,432.0	33,432.0			
70300635	TEMPORARY PAINT PAVEMENT MARKING-LINE 6"	FOOT	173.0	173.0			

* SPECIALTY ITEM

ILLINOIS DEPARTMENT OF TRANSPORTATION
SUMMARY OF QUANTITIES

Rev.

**ILLINOIS DEPARTMENT OF TRANSPORTATION
SUMMARY OF QUANTITIES**

F.A RTE.	SECTION	COUNTY	TOTAL SHEET	SHEET NO.
1645	150RS	SANGAMON	28	5
STA.		TO STA.		
FED.ROAD DIST.NO.		ILLINOIS	FED. AID PROJECT	
CONTRACT NO. 72876				

LOCATION OF WORK				80% FED 20% STATE			
SUMMARY OF QUANTITIES				CONSTRUCTION TYPE CODE			
PAY CODE	PAY ITEM	UNIT	TOTAL QUANTITY	1000			
70301000	WORK ZONE PAVEMENT MARKING REMOVAL	SQ FT	430.0	430.0			
* 78001120	PAINT PAVEMENT MARKING - LINE 5"	FOOT	33,432.0	33,432.0			
* 78001130	PAINT PAVEMENT MARKING - LINE 6"	FOOT	173.0	173.0			
78003100	PREFORMED PLASTIC PAVEMENT MARKING -TYPE B LETTERS & SYMBOLS	SQ FT	46.8	46.8			
* 78100100	RAISED REFLECTIVE PAVEMENT MARKER	EACH	162.0	162.0			
78300200	RAISED REFLECTIVE PAVEMENT MARKER REMOVAL	EACH	162.0	162.0			
70102620	TRAFFIC CONTROL AND PROTECTION, STANDARD 701501	L SUM	1.0	1.0			
70102622	TRAFFIC CONTROL AND PROTECTION, STANDARD 701502	L SUM	1.0	1.0			

* SPECIALTY ITEM

ILLINOIS DEPARTMENT OF TRANSPORTATION
SUMMARY OF QUANTITIES

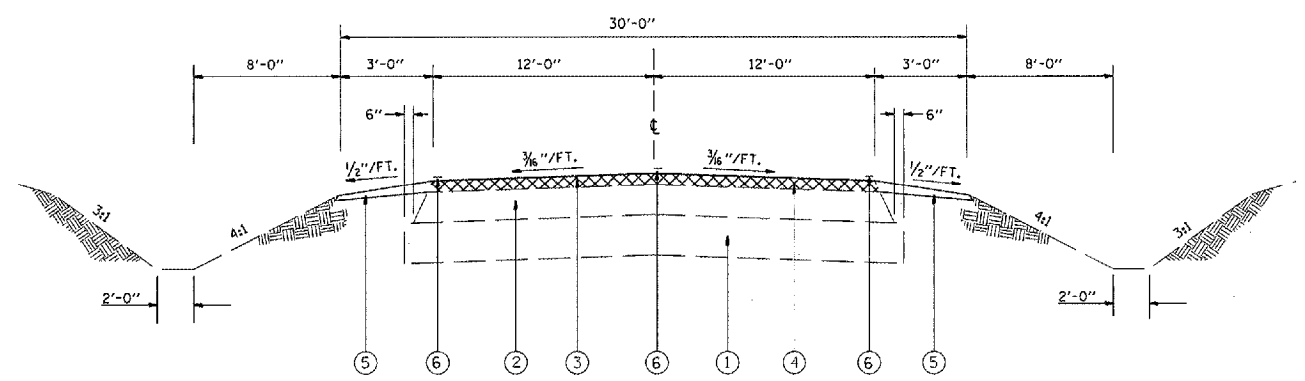
F.A.S. WTE.	SECTION	COUNTY	TOTAL SHEETS	SHEET NO.
1645	150RS	SANGAMON	28	6
STA.		TO STA.		
FED. ROAD DIST. NO. 5		ILLINOIS	FED. AID PROJECT	

CONTRACT NO. 72876

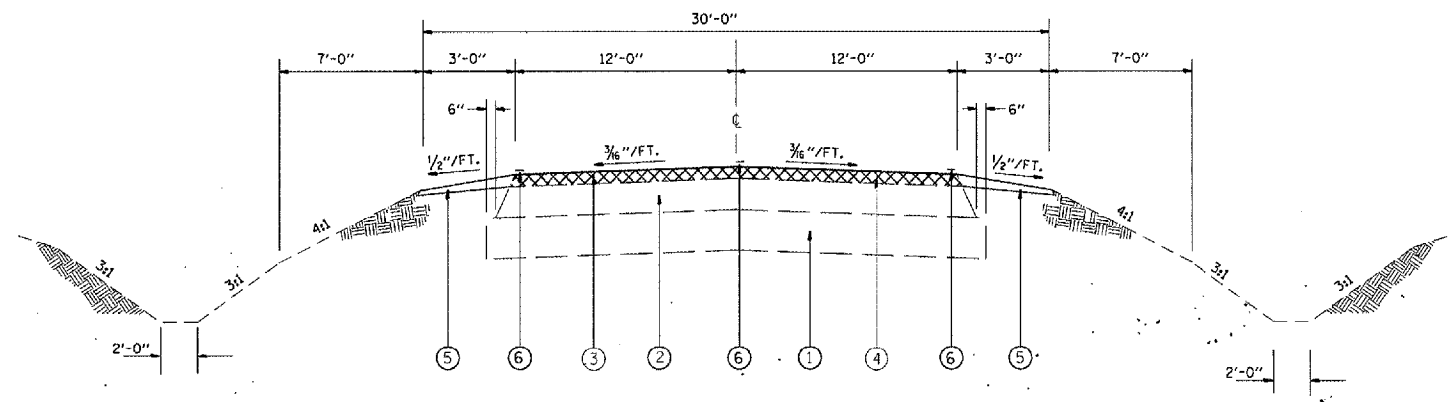
LEGEND

- ① EXISTING 12" LIME MODIFIED SOIL
- ② EXISTING BITUMINOUS CONCRETE PAVEMENT (FULL DEPTH) 12 1/2"
- ③ PROPOSED BITUMINOUS SURFACE REMOVAL - 1 3/4"
- ④ PROPOSED BITUMINOUS CONCRETE SURFACE COURSE, SUPERPAVE, MIX C, N50 - 2"
- ⑤ PROPOSED AGGREGATE SHOULDER WEDGE, TYPE B
- ⑥ PROPOSED PAINT PAVEMENT MARKING LINE, 5"

NOTE: SUPER ELEVATED PAVEMENT SECTION
FROM STA 198+71.47 TO STA 199+75



STA 57+25 TO STA 95+30
STA 99+30 TO STA 186+15.09



STA 95+30 TO STA 99+30

REVISIONS	
NAME	DATE

ILLINOIS DEPARTMENT OF TRANSPORTATION

TYPICAL SECTIONS
F.A.S. ROUTE 1645
SECTION 150RS
SANGAMON COUNTY

F.A RTE.	SECTION	COUNTY	TOTAL SHEET	SHEET NO.
1645	150RS	SANGAMON	28	7
STA.		TO STA.		
FED.ROAD DIST.NO.		ILLINOIS	FED. AID PROJECT	

CONTRACT NO. 72876

PAINT PAVEMENT MARKING - LINE 5"	
LOCATION	TOTAL (FT)
<u>EDGE LINE - WHITE</u> LT STA 57+25 - LT STA 186+15.09 RT STA 57+25 - RT STA 186+15.09	12,890.0 12,890.0
<u>SKIP- DASH - YELLOW</u> STA 57+ 25 - STA 186+15.09	3,223.0
<u>NO PASSING ZONE - YELLOW</u> STA 78+52 - STA 79+52 STA 89+00 - STA 96+50 STA 96+50 - STA 100+60 STA 116+55 - STA 128+84 STA 144+50 - STA 158+29 STA 181+72 - STA 183+87	100.0 750.0 410.0 1,229.0 1,379.0 215.0
<u>LEFT-TURN LANE DBL YELLOW</u> STA 198+04.24 - STA 199+24.84 STA 31+56.74 - STA 32+09	173.0 173.0
TOTAL	33,432.0

STA EQU 199+24.84 BK=31+56.74 AH

PAINT PAVEMENT MARKING - LINE 6"	
LOCATION	TOTAL (FT)
<u>LEFT-TURN LANE - WHITE</u> STA 198+04.25 - STA 32+09	173.0
TOTAL	173.0

PREFORMED PLASTIC PAVEMENT MARKING- LETTERS SYMBOLS	
LOCATION	TOTAL (SQ FT)
<u>LEFT-TURN LANE - WHITE</u> STA 198+04.25 - STA 32+09 (3 LT-TURN ARROWS)	46.8
TOTAL	46.8

ILLINOIS DEPARTMENT OF TRANSPORTATION

SCHEDULE OF QUANTITIES

F.A RTE.	SECTION	COUNTY	TOTAL SHEET	SHEET NO.
1645	150RS	SANGAMON	28	8
STA.		TO STA.		
FED.ROAD DIST.NO.		ILLINOIS	FED. AID PROJECT	

CONTRACT NO. 72876

BITUMINOUS CONCRETE SURFACE COURSE, SUPERPAVE, MIX C N50	
LOCATION	TOTAL (TONS)
<u>MAINLINE</u> STA.57+25 - STA.186+15.09	3,850.0
<u>PORTABLE SCALE TURNOUT</u> LT STA.59+00 - LT STA.66+95 LT STA.67+45 - LT STA.75+40	158.5 158.5
TOTAL	4,167.0

AGGREGATE BASE COURSE TY. B 12"	
LOCATION	TOTAL (SQYD)
LT-TURN LANE STA.198+04.25	230.5
TOTAL	230.5

BITUMINOUS CONCRETE BINDER COURSE, SUPERPAVE, IL-19.0, N90 - 13"	
LOCATION	TOTAL (SQYD)
LT-TURN LANE STA 198+04.25 - STA 32+09	230.5
TOTAL	230.5

BITUMINOUS CONCRETE SURFACE COURSE, SUPERPAVE, MIX D N90	
LOCATION	TOTAL (TONS)
<u>LEFT-TURN LANE</u> STA 198+04.25 - STA 32+09	26.0
TOTAL	26.0

PREPARATION OF BASE	
LOCATION	TOTAL (SQ YD)
<u>CE, PE, & MAILBOX TURNOUTS</u> CE STA 89+30 RT MB STA 89+70 LT COMB PE& MB STA 96+50 LT MB STA 102+77 LT PE STA 102+63 RT COMB PE & MB STA 143 +11 LT SIDEROAD STA 157+04 LT MB STA 183+71 LT PE STA 183+87 RT	66.0 40.0 54.0 40.0 9.0 54.0 33.0 55.0 10.0
TOTAL	361.0

INCIDENTAL BITUMINOUS SURFACING	
LOCATION	TOTAL (TONS)
<u>CE, PE, & MAILBOX TURNOUTS</u> CE STA 89+30 RT MB STA 89+70 LT COMB PE& MB STA 96+50 LT MB STA 102+77 LT PE STA 102+63 RT COMB PE & MB STA 143 +11 LT SIDEROAD STA 157+04 LT MB STA 183+71 LT PE STA 183+87 RT	7.3 4.5 6.0 4.5 1.0 6.0 3.7 6.2 1.1
TOTAL	40.3

PAVEMENT REMOVAL	
LOCATION	TOTAL (SQYD)
<u>LT-TURN LANE</u> STA 198+04.25 - STA 32+09	230.5
TOTAL	230.5

BITUMINOUS SURFACE REMOVAL - 1 3/4"	
LOCATION	TOTAL (SQYD)
<u>MAINLINE</u> STA.57+25 - STA.186+15.09	34,374.0
<u>PORTABLE SCALE TURNOUT</u> LT STA.59+00 - LT STA.66+95 LT STA.67+45 - LT STA.75+40	1,413.5 1,413.5
<u>CE, PE, & MAILBOX TURNOUTS</u> CE STA 89+30 RT MB STA 89+70 LT COMB PE& MB STA 96+50 LT MB STA 102+77 LT PE STA 102+63 RT COMB PE & MB STA 143 +11 LT SIDEROAD STA 157+04 LT MB STA 183+71 LT PE STA 183+87 RT	66.0 40.0 54.0 40.0 9.0 54.0 33.0 55.0 10.0
TOTAL	37,562.0

ILLINOIS DEPARTMENT OF TRANSPORTATION

SCHEDULE OF QUANTITIES

F. A.S. SHE.	SECTION	COUNTY	TOTAL SHEETS	SHEET NO.
1645	150RS	SANGAMON	28	9
STA. 63+00		TO STA. 63+00		
FED. ROAD DIST. NO. 1		ILLINOIS	FED. AID PROJECT	

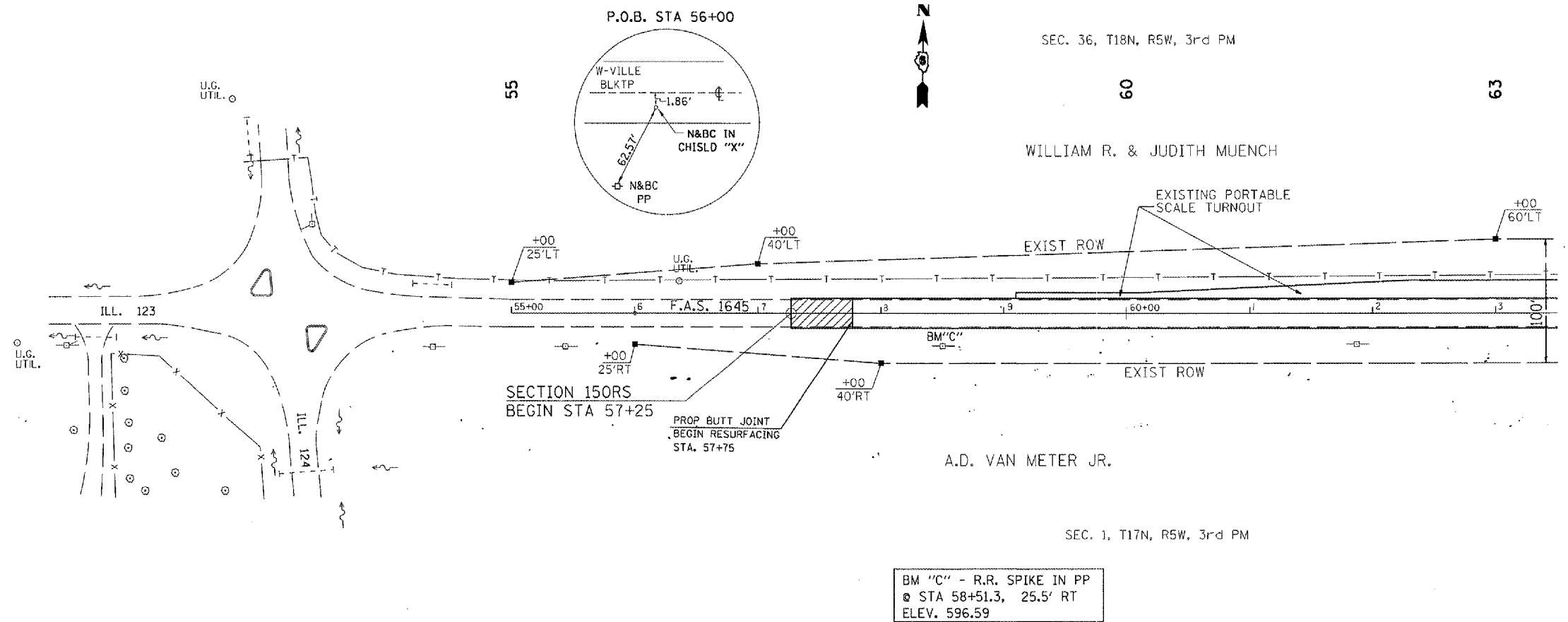
CONTRACT NO. 72876

DATE	BY

PLAN
 REVISIONS
 NO. _____
 DATE _____
 BY _____
 NOTE BOOK NO. _____
 DRAWING NO. _____
 CHECKED BY _____
 DATE _____

DATE	BY

PROFILE
 REVISIONS
 NO. _____
 DATE _____
 BY _____
 NOTE BOOK NO. _____
 DRAWING NO. _____
 CHECKED BY _____
 DATE _____



BM "C" - R.R. SPIKE IN PP
 @ STA 58+51.3, 25.5' RT
 ELEV. 596.59

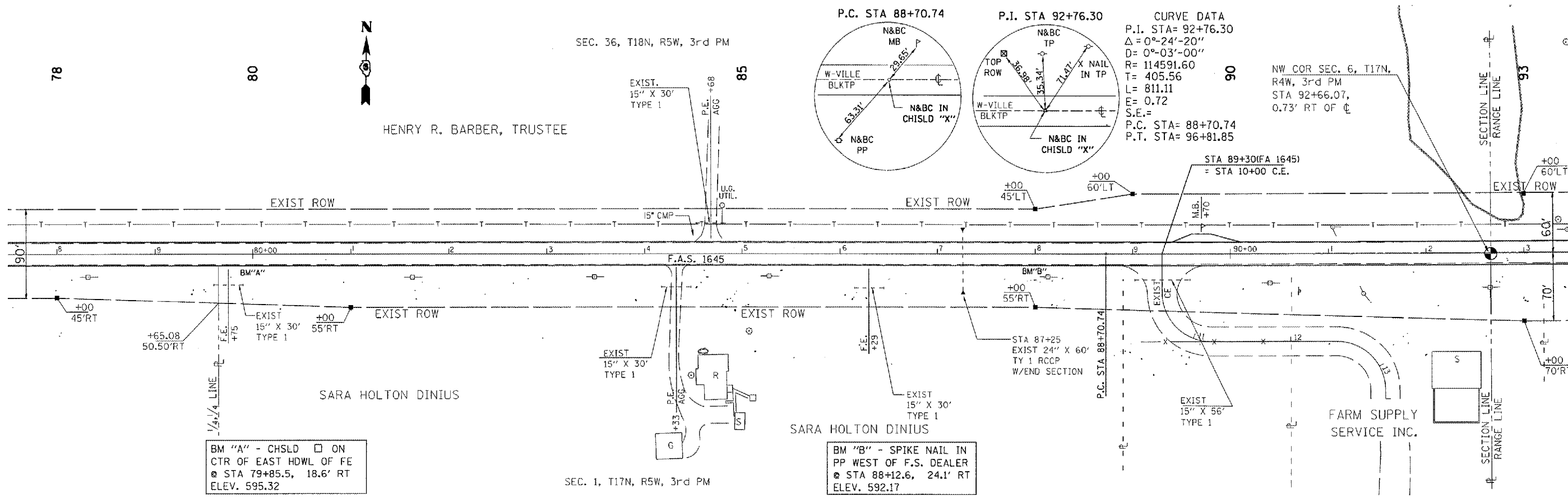
ILLINOIS DEPARTMENT OF TRANSPORTATION
 F.A.S. ROUTE 1645
 SECTION 150RS
 SANGAMON COUNTY

P.A. NO.	SECTION	COUNTY	TOTAL SHEETS	SHEET NO.
1645	150RS	SANGAMON	28	11
STA. 78+00		TO STA. 93+00		
FED. ROAD DIST. NO. 1		ILLINOIS	FED. AID PROJECT	

CONTRACT NO. 72876

PLAN	DATE
BY	
CHECKED	
DATE	
NO.	

PROFILE	DATE
BY	
CHECKED	
DATE	
NO.	



BM "A" - CHSLD □ ON
CTR OF EAST HDWL OF FE
@ STA 79+85.5, 18.6' RT
ELEV. 595.32

BM "B" - SPIKE NAIL IN
PP WEST OF F.S. DEALER
@ STA 88+12.6, 24.1' RT
ELEV. 592.17

ILLINOIS DEPARTMENT OF TRANSPORTATION

F.A.S. ROUTE 1645
SECTION 150RS
SANGAMON COUNTY

F.A.S. FILE	SECTION	COUNTY	TOTAL SHEETS	SHEET NO.
1645	150RS	SANGAMON	28	12
STA. 93+00		TO STA. 108+00		
FED. ROAD DIST. NO. 1		ILLINOIS	FED. AID PROJECT	

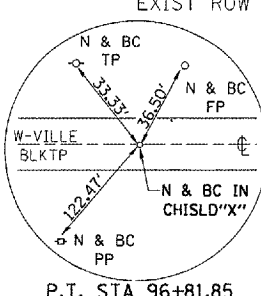
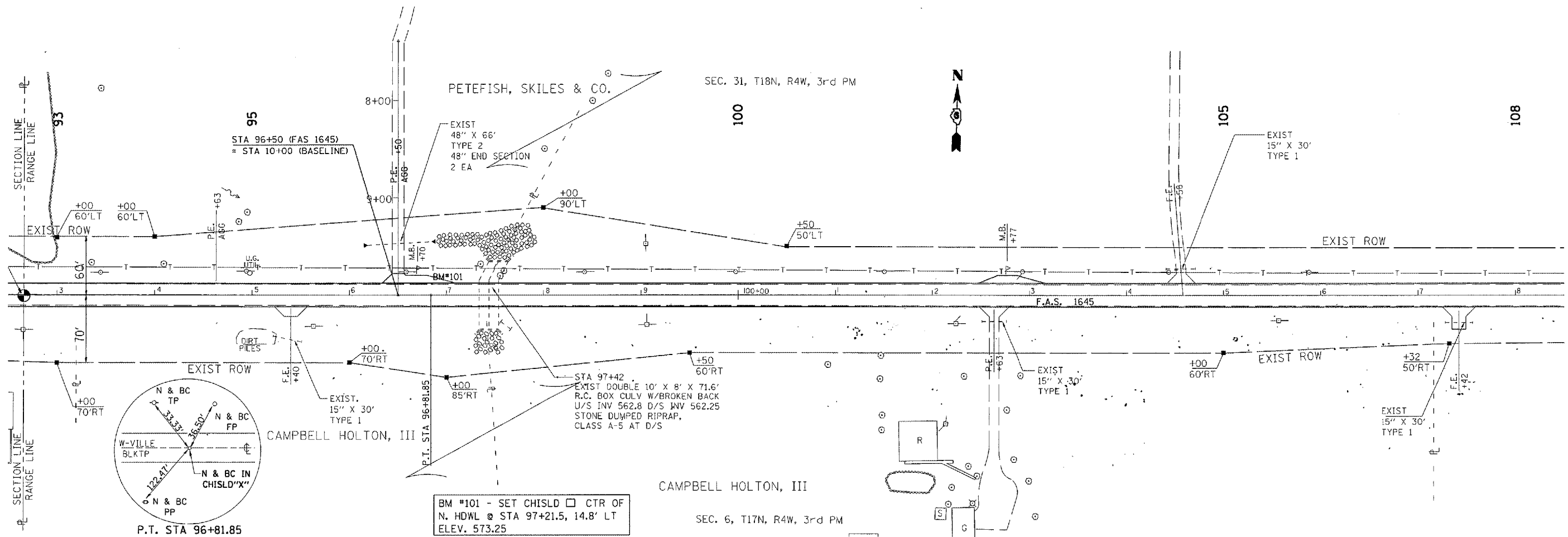
CONTRACT NO. 72876

PLAN

SURVEYED	DATE
NOTE BOOK	BY
ALIGNED	CHECKED
PLANNED	FILED
NO.	FILE NAME

PROFILE

REVISED	DATE
BY	BY
NO.	INITIALS



BM *101 - SET CHISLD □ CTR OF N. HDWL @ STA 97+21.5, 14.8' LT ELEV. 573.25

ILLINOIS DEPARTMENT OF TRANSPORTATION

F.A.S. ROUTE 1645
SECTION 150RS
SANGAMON COUNTY

F.A.S. DIST.	SECTION	COUNTY	TOTAL SHEETS	SHEET NO.
1645	150RS	SANGAMON	28	13
STA. 108+00		TO STA. 123+00		
FED. ROAD DIST. NO. 1	ILLINOIS	FED. AID PROJECT		

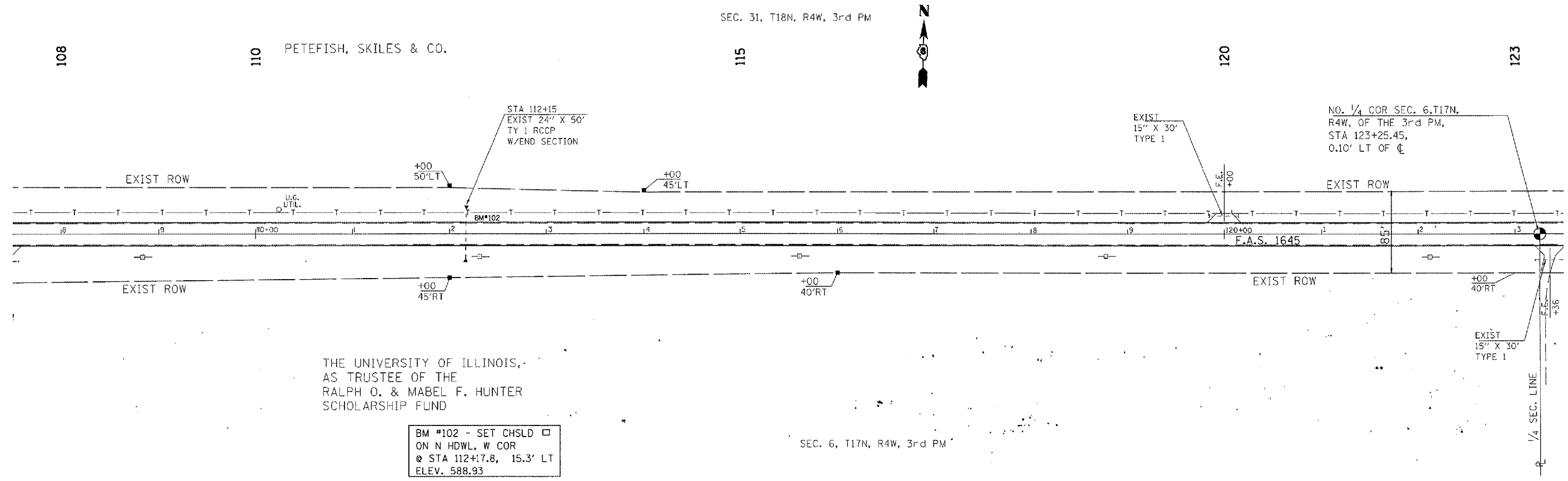
CONTRACT NO. 72876

PLAN

NO.	2
DATE	
BY	
CHECKED	
DATE	

PROFILE

NO.	2
DATE	
BY	
CHECKED	
DATE	



THE UNIVERSITY OF ILLINOIS,
AS TRUSTEE OF THE
RALPH O. & MABEL F. HUNTER
SCHOLARSHIP FUND

BM #102 - SET CHSLD □
ON N HDWL, W COR
@ STA 112+17.8, 15.3' LT
ELEV. 588.93

ILLINOIS DEPARTMENT OF TRANSPORTATION

F.A.S. ROUTE 1645
SECTION 150RS
SANGAMON COUNTY

F.A.S. FIG.	SECTION	COUNTY	TOTAL SHEETS	SHEET NO.
1645	150RS	SANGAMON	28	14
STA. 123+00		TO STA. 138+00		
FED. ROAD DIST. NO. 7		ILLINOIS	FED. AID PROJECT	

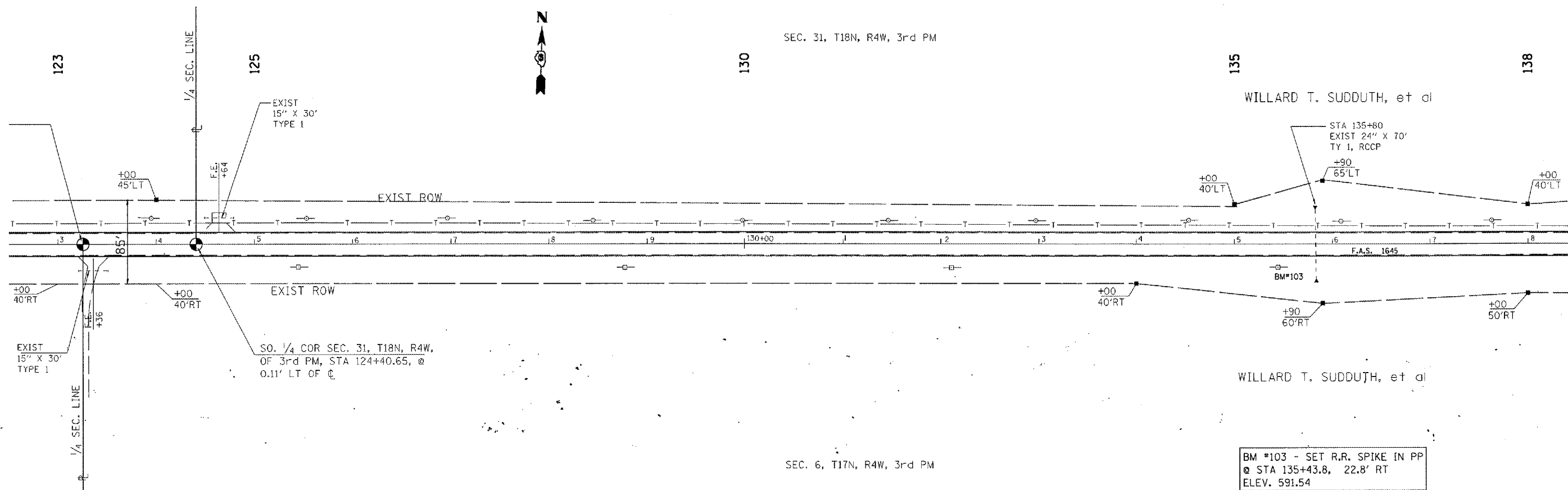
CONTRACT NO. 72876

PLAN

SUBMITTED	DATE
NOTE BOOK	
DESIGNED	
CHECKED	
BY	
NO.	

PROFILE

SUBMITTED	DATE
NOTE BOOK	
DESIGNED	
CHECKED	
BY	
NO.	



BM #103 - SET R.R. SPIKE IN PP
 @ STA 135+43.8, 22.8' RT
 ELEV. 591.54

ILLINOIS DEPARTMENT OF TRANSPORTATION

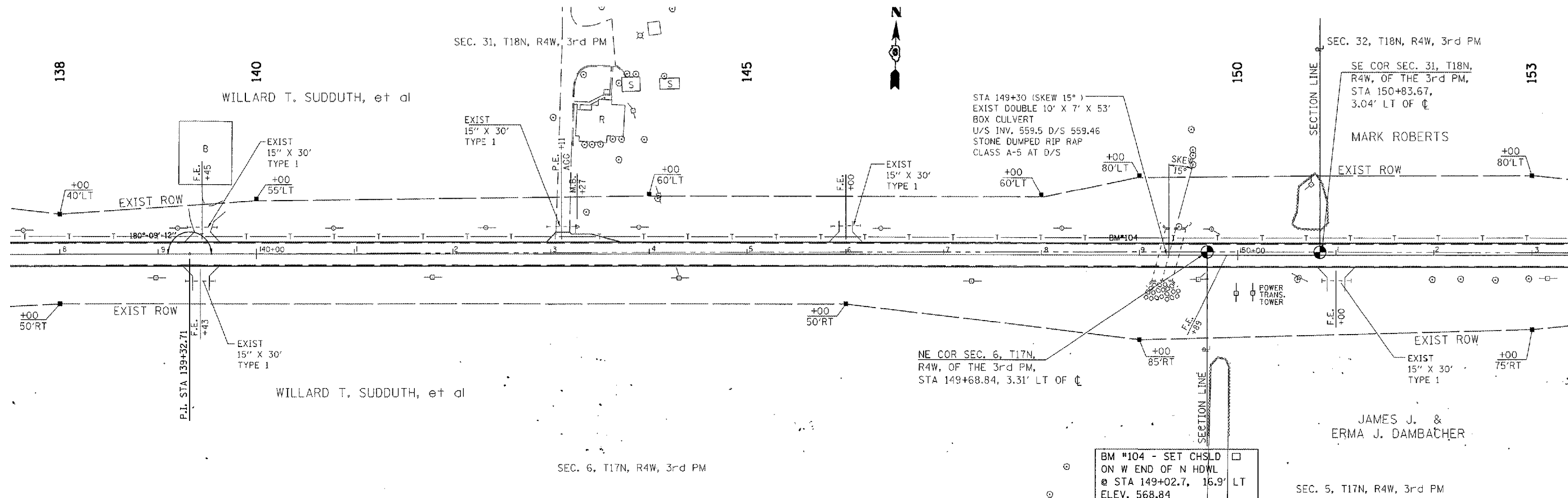
F.A.S. ROUTE 1645
 SECTION 150RS
 SANGAMON COUNTY

F.A.S. DIST.	SECTION	COUNTY	TOTAL SHEETS	SHEET NO.
1645	150RS	SANGAMON	28	15
STA. 138+00		TO STA. 153+00		
FED. ROAD DIST. NO. 1		ILLINOIS	FED. AID PROJECT	

CONTRACT NO. 72876

PLAN	DATE
DESIGNED	
CHECKED	
IN CHARGE	
BY	

PROFILE	DATE
DESIGNED	
CHECKED	
IN CHARGE	
BY	



BM #104 - SET CHSLD ON W END OF N HDWL @ STA 149+02.7, 16.9' LT ELEV. 568.84

ILLINOIS DEPARTMENT OF TRANSPORTATION

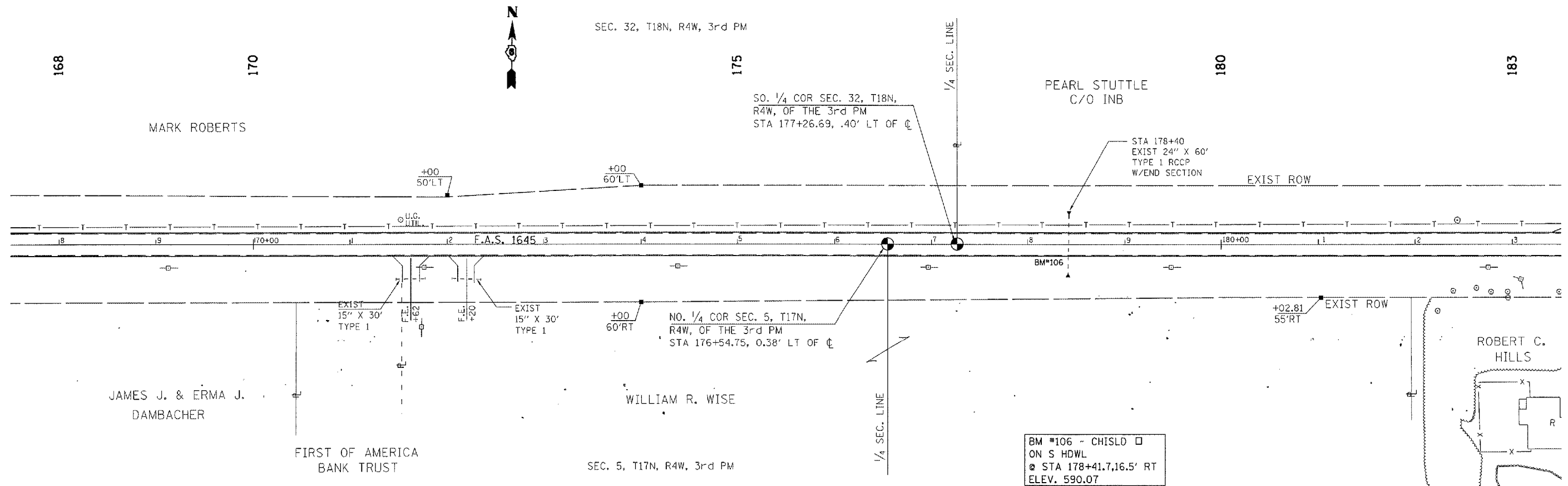
F.A.S. ROUTE 1645
SECTION 150RS
SANGAMON COUNTY

F.A.S. DIST.	SECTION	COUNTY	TOTAL SHEETS	SHEET NO.
1645	150RS	SANGAMON	28	17
STA. 168+00		TO STA. 183+00		
FED. ROAD DIST. NO. 7	ILLINOIS	FED. AID PROJECT		

CONTRACT NO. 72876

PLAN	DATE
SURVEYED	
NOTE BOOK	
NO.	
CHECKED	
FILE NAME	

PROFILE	DATE
SURVEYED	
NOTE BOOK	
NO.	
CHECKED	
FILE NAME	



BM #106 - CHISLD □
 ON S HDWL
 @ STA 178+41.7, 16.5' RT
 ELEV. 590.07

ILLINOIS DEPARTMENT OF TRANSPORTATION

F.A.S. ROUTE 1645
 SECTION 150RS
 SANGAMON COUNTY

F. A.S. STA.	SECTION	COUNTY	TOTAL SHEETS	SHEET NO.
1645	150RS	SANGAMON	28	18
STA. 183+00		TO STA. 198+00		
FED. ROAD DIST. NO. 7		ALTIMETER	FED. AID PROJECT	

CONTRACT NO. 72876

PLAN

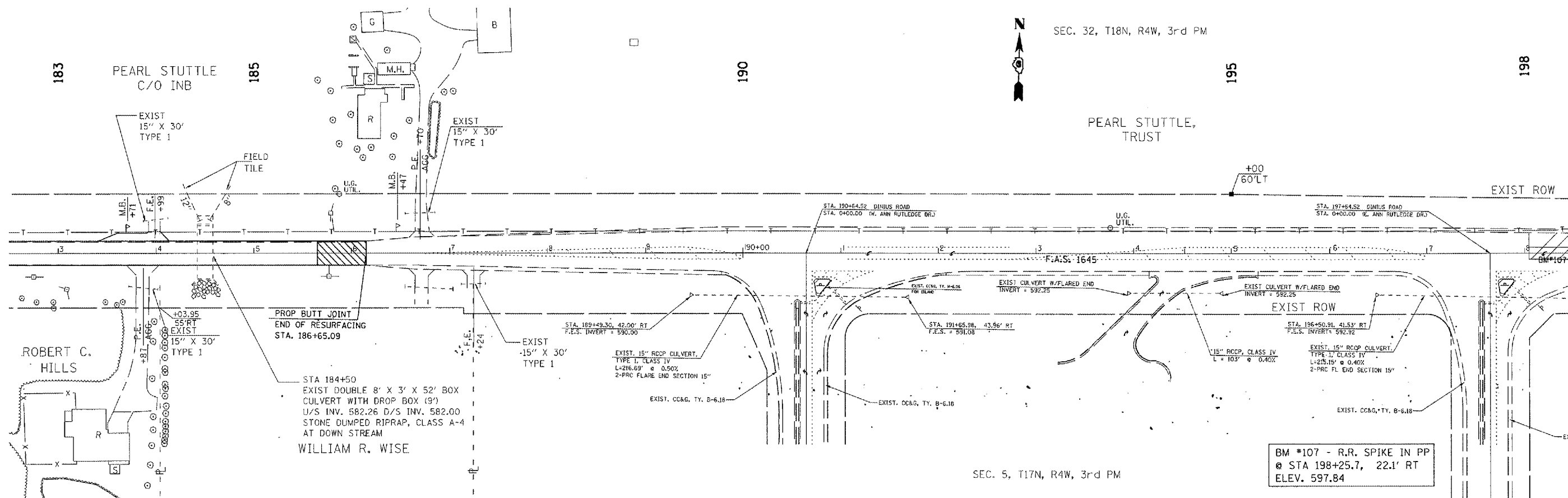
DATE	BY

REVIEWED BY: []
 CHECKED BY: []
 DATE: []

PROFILE

DATE	BY

REVIEWED BY: []
 CHECKED BY: []
 DATE: []



BM #107 - R.R. SPIKE IN PP
 @ STA 198+25.7, 22.1' RT
 ELEV. 597.84

ILLINOIS DEPARTMENT OF TRANSPORTATION

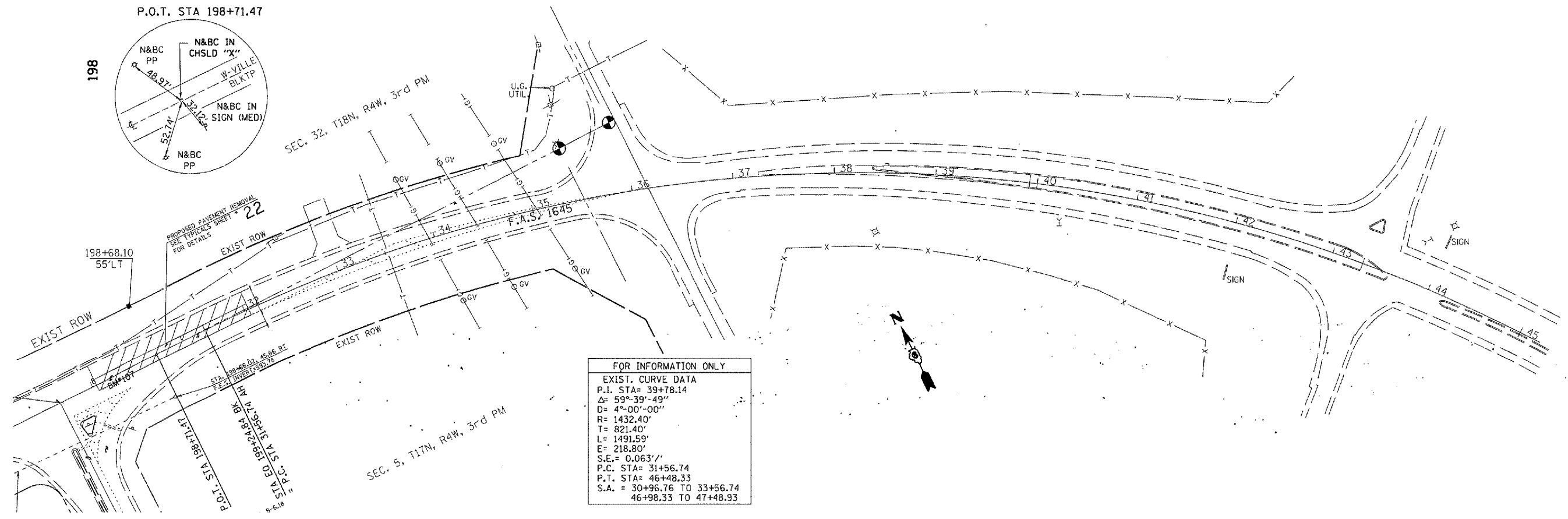
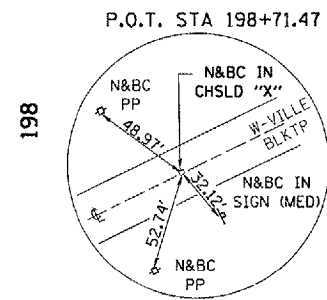
F.A.S. ROUTE 1645
 SECTION 150RS
 SANGAMON COUNTY

F.A.S. DIST.	SECTION	COUNTY	SHEET NO.	SHEET NO.
1645	150RS	SANGAMON	28	19
STA. 198+00		TO STA.		
FED. ROAD DIST. NO. 7	ILLINOIS	FED. AID PROJECT		

CONTRACT NO. 72876

PLAN	DATE
BY	
CHECKED	
DATE	
NO.	

PROFILE	DATE
BY	
CHECKED	
DATE	
NO.	



FOR INFORMATION ONLY

EXIST. CURVE DATA

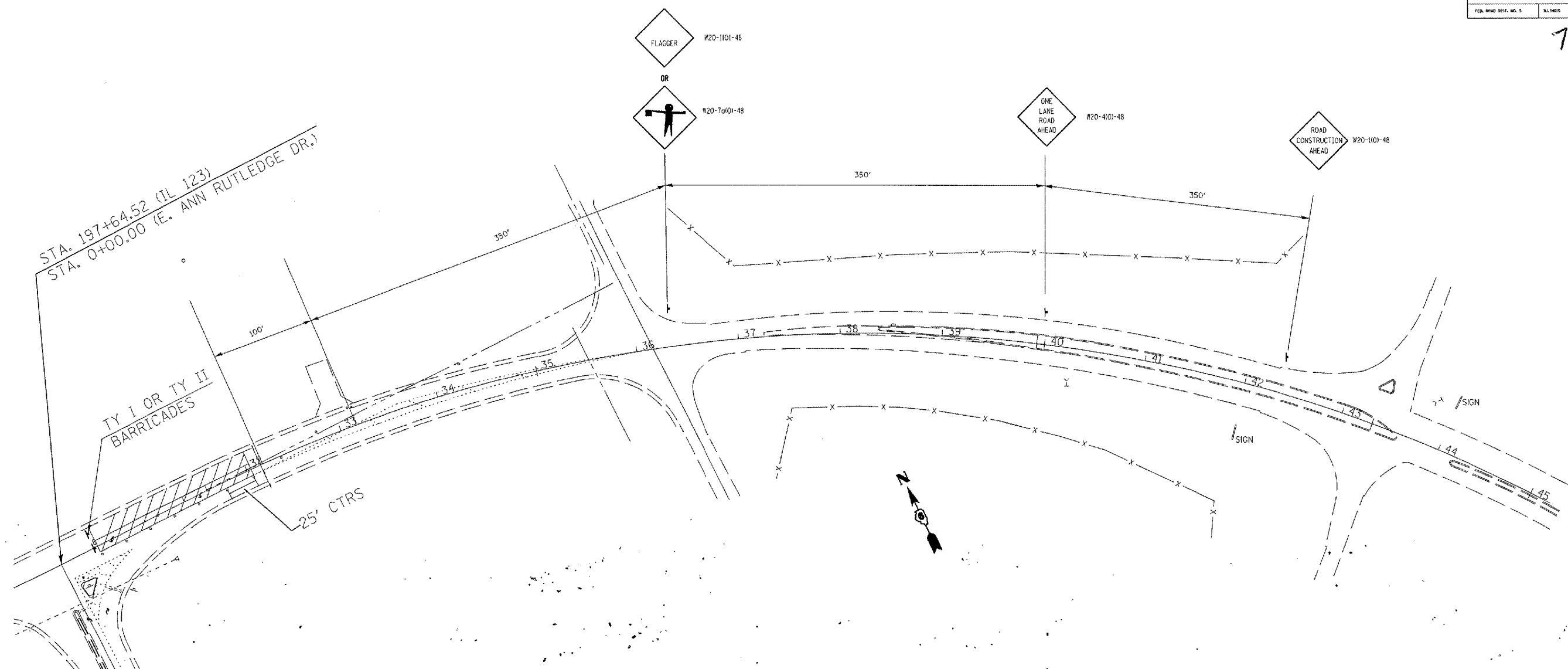
P.I. STA=	39+78.14
Δ=	59°-39'-49"
D=	4°-00'-00"
R=	1432.40'
T=	821.40'
L=	1491.59'
E=	218.80'
S.E.=	0.063'/'
P.C. STA=	31+56.74
P.T. STA=	46+48.33
S.A. =	30+96.76 TO 33+56.74
	46+98.33 TO 47+48.93

ILLINOIS DEPARTMENT OF TRANSPORTATION

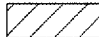

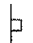

F.A.S. ROUTE 1645
SECTION 150RS
SANGAMON COUNTY

F.A.S. NO.	SECTION	COUNTY	TOTAL SHEETS	SHEET NO.
1645	150R,B,B-1	SANGAMON	28	20
STA.		TO STA.		
FED. ROAD DIST. NO. 5		ALTIMET	FED. AID PROJECT	

72876



SYMBOLS

-  WORK AREA
-  CONE, DRUM, OR BARRICADE @ 25' CENTERS
-  SIGN ON PORTABLE OR PERMANENT SUPPORT
-  FLAGGER WITH TRAFFIC CONTROL SIGN

GENERAL NOTES:

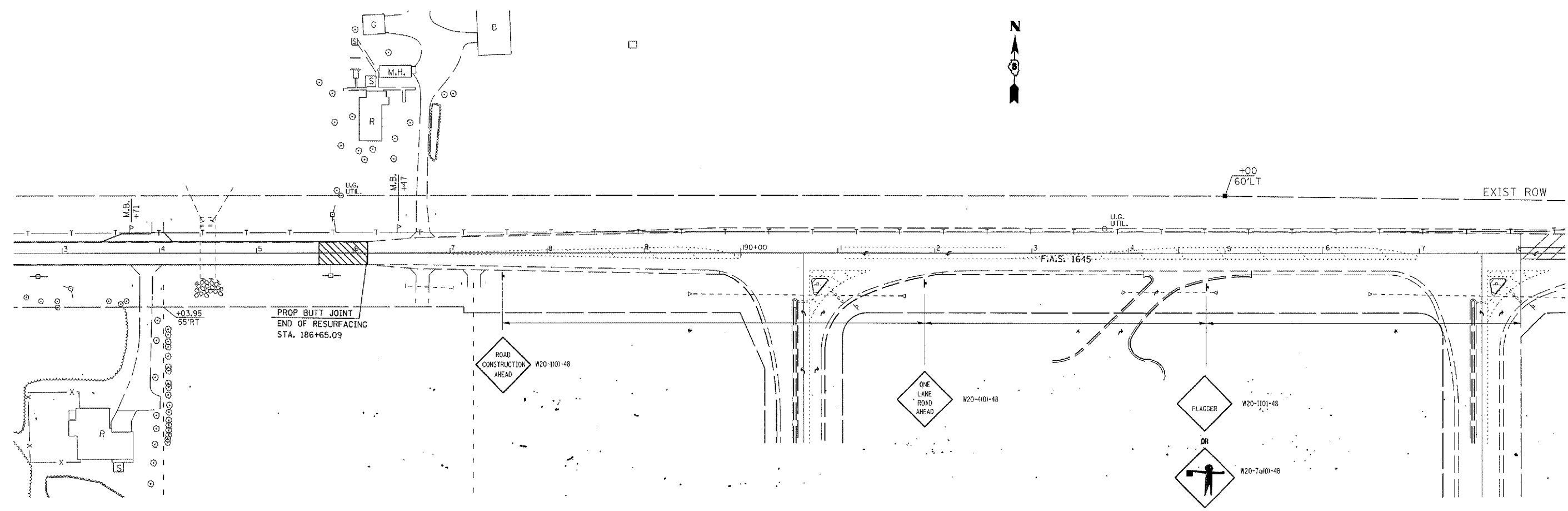
1. THE CONTRACTOR SHALL SCHEDULE HIS WORK OPERATION TO BEGIN ON MONDAY MORNING AND HAVE ALL WORK COMPLETED AND THE LEFT-TURN LANE OPEN TO TRAFFIC ON FRIDAY AFTERNOON.
2. LUMP SUM PRICE BID FOR TRAFFIC CONTROL AND PROTECTION, STANDARD 701501 SHALL BE CONSIDERED FULL COMPENSATION FOR FURNISHING, ERECTING, MAINTAINING AND REMOVING CONES/DRUMS/BARRICADES SHOWN ON THIS SHEET.
3. USE TRAFFIC CONTROL AND PROTECTION, STANDARD 701502, CASE 1 WHEN NO WORKER ARE PRESENT OR OVERNIGHT LANE CLOSURE.

REVISIONS	
NAME	DATE
CAD	4-10-89

ILLINOIS DEPARTMENT OF TRANSPORTATION
 TRAFFIC CONTROL
 F.A.S. ROUTE 1645
 SECTION 150R
 SANGAMON COUNTY

K.L. SHEET	SECTION	COUNTY	TOTAL SHEETS	SHEET NO.
1645	150R,B,B-1	SANGAMON	28	21
STA.		TO STA.		
FED. ROAD DIST. NO. 5		ILLINOIS	FED. AID PROJECT	

72876



* PLACEMENT OF SIGN
TO BE DETERMINED BY
RESIDENT ENGINEER

REVISIONS	
NAME	DATE
CAD	4-10-89

ILLINOIS DEPARTMENT OF TRANSPORTATION
TRAFFIC CONTROL
F.A.S. ROUTE 1645
SECTION 150R
SANGAMON COUNTY

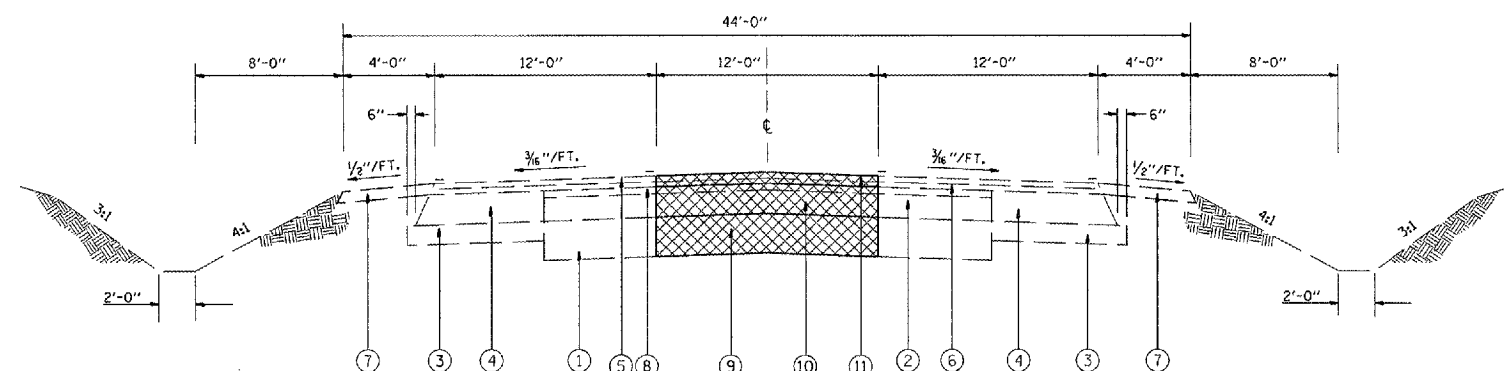
F.A.S. NO.	SECTION	COUNTY	TOTAL SHEETS	SHEET NO.
1645	15ORS	SANGAMON	28	22
STA.		TO STA.		
FED. ROAD DIST. NO. 5	ILLINOIS	FED. AID PROJECT		

CONTRACT NO.

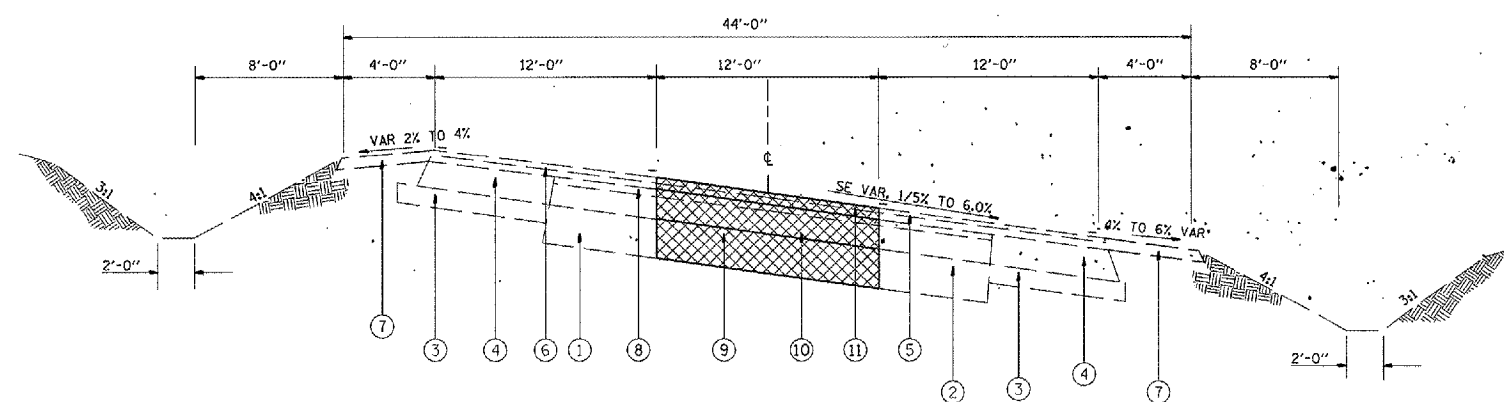
72876

LEGEND

- ① EXISTING LIME MODIFIED SOIL - 12"
- ② EXISTING BITUMINOUS CONCRETE BASE COURSE - 11 "
- ③ EXISTING SUB-BASE GRANULAR MATERIALS, TY. B - 4"
- ④ EXISTING BITUMINOUS CONCRETE BASE COURSE - 12 1/2"
- ⑤ EXISTING BITUMINOUS CONCRETE SURFACE COURSE - 1 1/2"
- ⑥ EXISTING LEVEL BINDER - 1"
- ⑦ EXISTING BITUMINOUS CONCRETE BASE COURSE SHOULDERS - 8"
- ⑧ EXISTING BITUMINOUS CONCRETE SURFACE COURSE - 1 1/2"
- ⑨ PROPOSED AGGREGATE BASE COURSE TYPE B - 12"
- ⑩ PROPOSED BITUMINOUS CONCRETE BINDER COURSE, SUPERPAVE, IL-19.0, N90 - 13"
- ⑪ PROPOSED BITUMINOUS CONCRETE SURFACE COURSE, SUPERPAVE, MIX D. N90 - 2"



PROPOSED TYPICAL SECTION
STA. 198+04.25 TO STA. 198+50.00



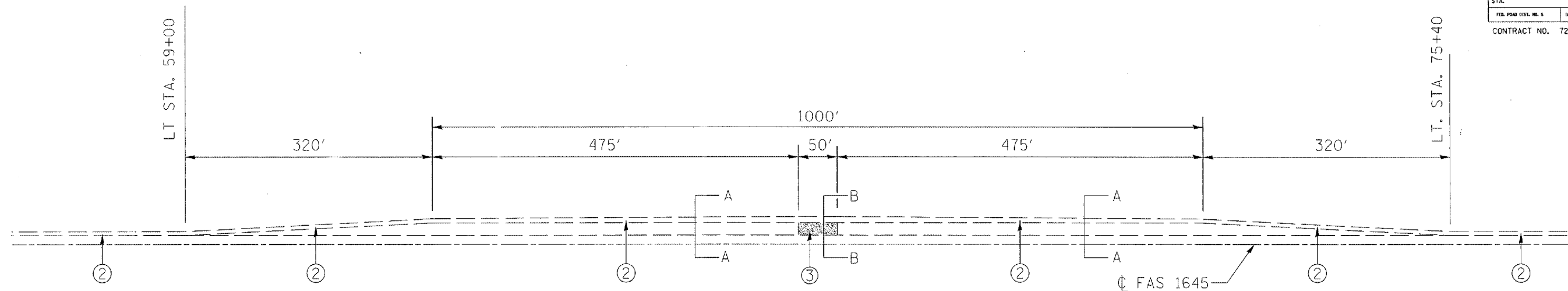
PROPOSED TYPICAL SECTION
STA. 198+50.00 TO STA. 32+09.00

EXISTING PAVEMENT TO BE REMOVED

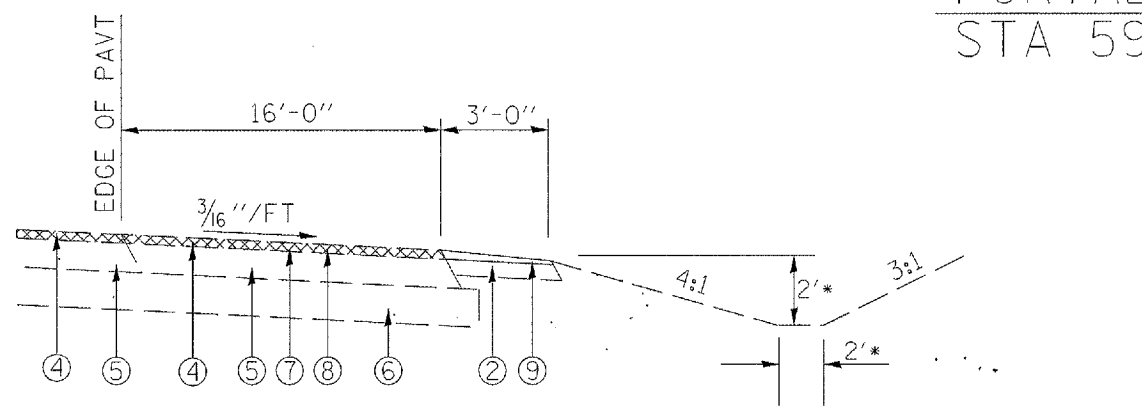
REVISIONS	
NAME	DATE

ILLINOIS DEPARTMENT OF TRANSPORTATION
PAVEMENT REMOVAL &
REPLACEMENT DETAIL
F.A.S. ROUTE 1645
SECTION 15ORS
SANGAMON COUNTY

F. A. REF.	SECTION	COUNTY	TOTAL SHEETS	SHEET NO.
1645	150RS	SANGAMON	28	23
STA.		TO STA.		
FED. ROAD DIST. NO. 5		ILLINOIS	FED. AID PROJECT	
CONTRACT NO. 72876				

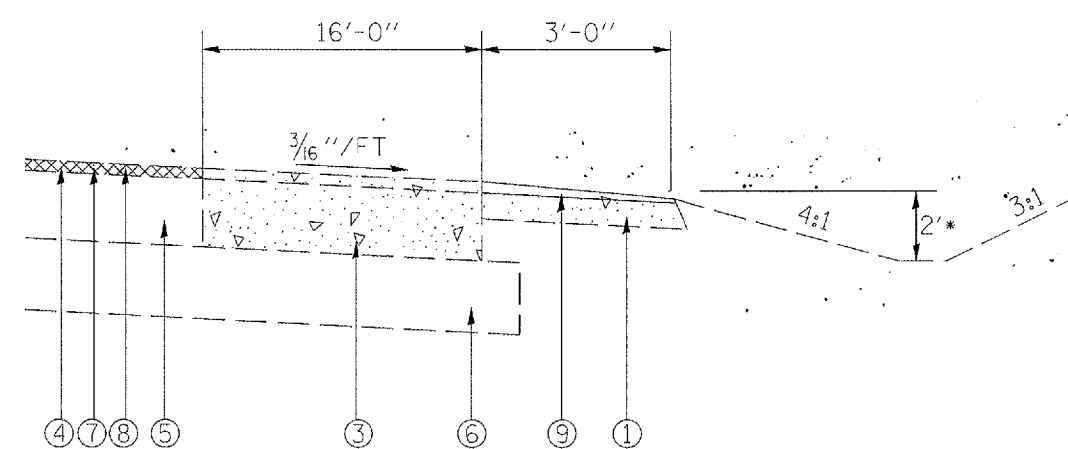


PORTABLE SCALE TURNOUT
STA 59+00 TO STA 75+40



SECTION A-A

* OR AS SHOWN ON PLANS



SECTION B-B

LEGEND

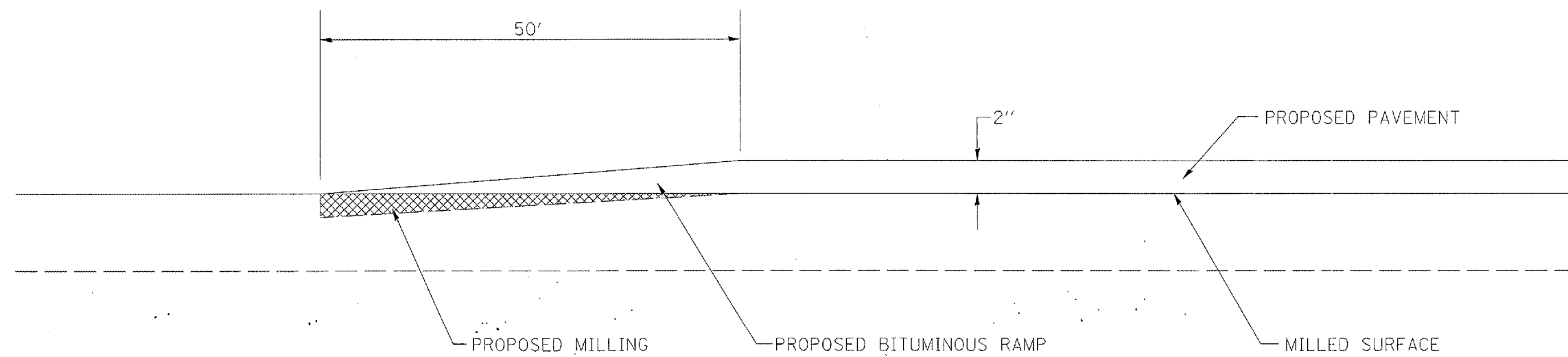
- ① EXIST AGGREGATE SURFACE COURSE, TYPE A, 8"
- ② EXIST AGGREGATE SURFACE COURSE, TYPE A, 6"
- ③ EXIST PORTLAND CEMENT CONCRETE PAVEMENT 12 1/2" & PAVEMENT FABRIC
- ④ EXIST BITUMINOUS CONCRETE SURFACE COURSE, MIX C, CLASS 1, TYPE 2, 1 1/2"
- ⑤ EXIST BITUMINOUS CONCRETE BINDER COURSE, MIX B, TYPE S, 11"
BITUMINOUS CONCRETE PAVEMENT (FULL DEPTH) TYPE 2, 12 1/2"
- ⑥ EXIST LIME MODIFIED SOIL 12"
- ⑦ PROP BIT SURFACE REMOVAL - 1 3/4"
- ⑧ PROP BIT CONCRETE SURFACE COURSE, SUPERPAVE, MIX C, N50 - 2"
- ⑨ PROP AGGREGATE SHLD WEDGE, TYPE B

REVISIONS	
NAME	DATE

ILLINOIS DEPARTMENT OF TRANSPORTATION
PORTABLE SCALE TURNOUT
F.A.S. ROUTE 1645
SECTION 150RS
SANGAMON COUNTY

F. A. S. NO.	SECTION	COUNTY	TOTAL SHEETS	SHEET NO.
1645	150RS	SANGAMON	28	24
STA.		TO STA.		
FED. ROAD DIST. NO. 0	BILLINGS	FED. AID PROJECT		

CONTRACT NO. 72876



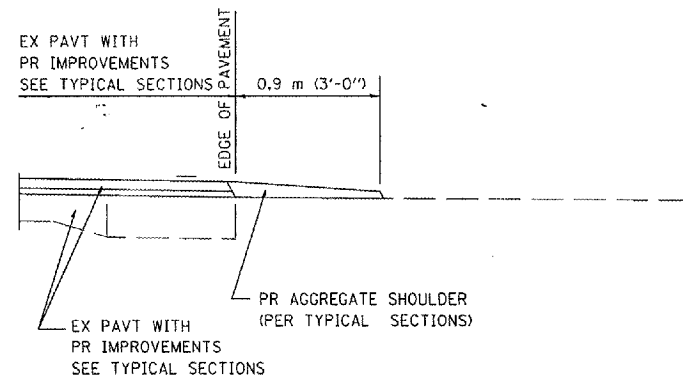
STA. 57+25 - STA. 57+75
 STA. 186+15.09 - STA. 186+65.09

ILLINOIS DEPARTMENT OF TRANSPORTATION

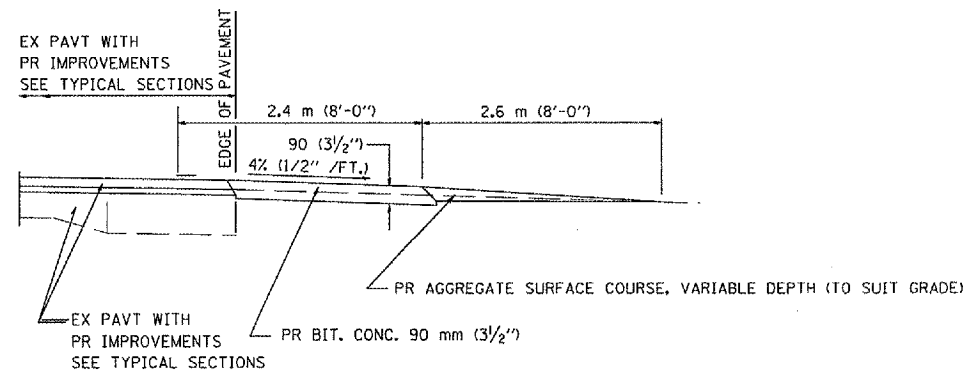
BUTT JOINT DETAIL
 F.A.S. ROUTE 1645
 SECTION 150RS
 SANGAMON COUNTY

F.A.P. RTE.	SECTION	COUNTY	TOTAL SHEETS	SHEET NO.
123	150 RS	SANGAMON	28	25
STA.		TO STA.		
FED. ROAD DIST. NO.		ILLINOIS FED. AID PROJECT		

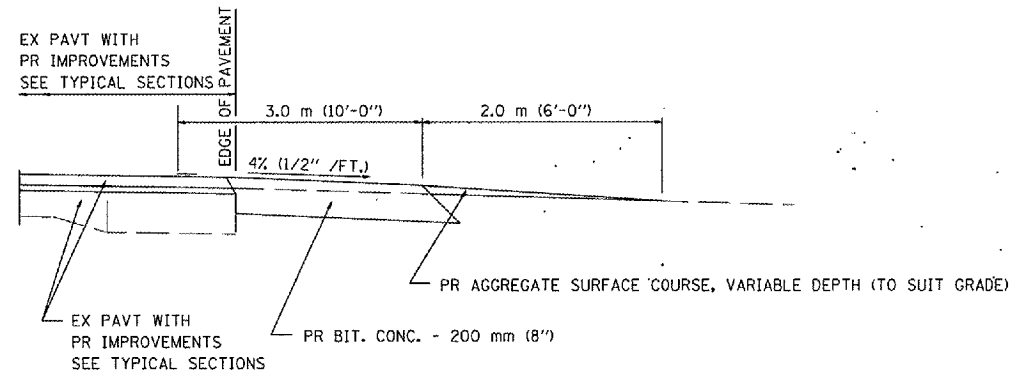
72876



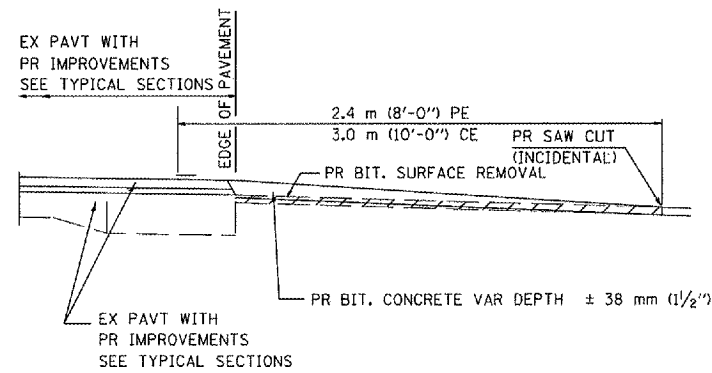
SECTION A-A FOR EX EARTH/ AGGREGATE FE



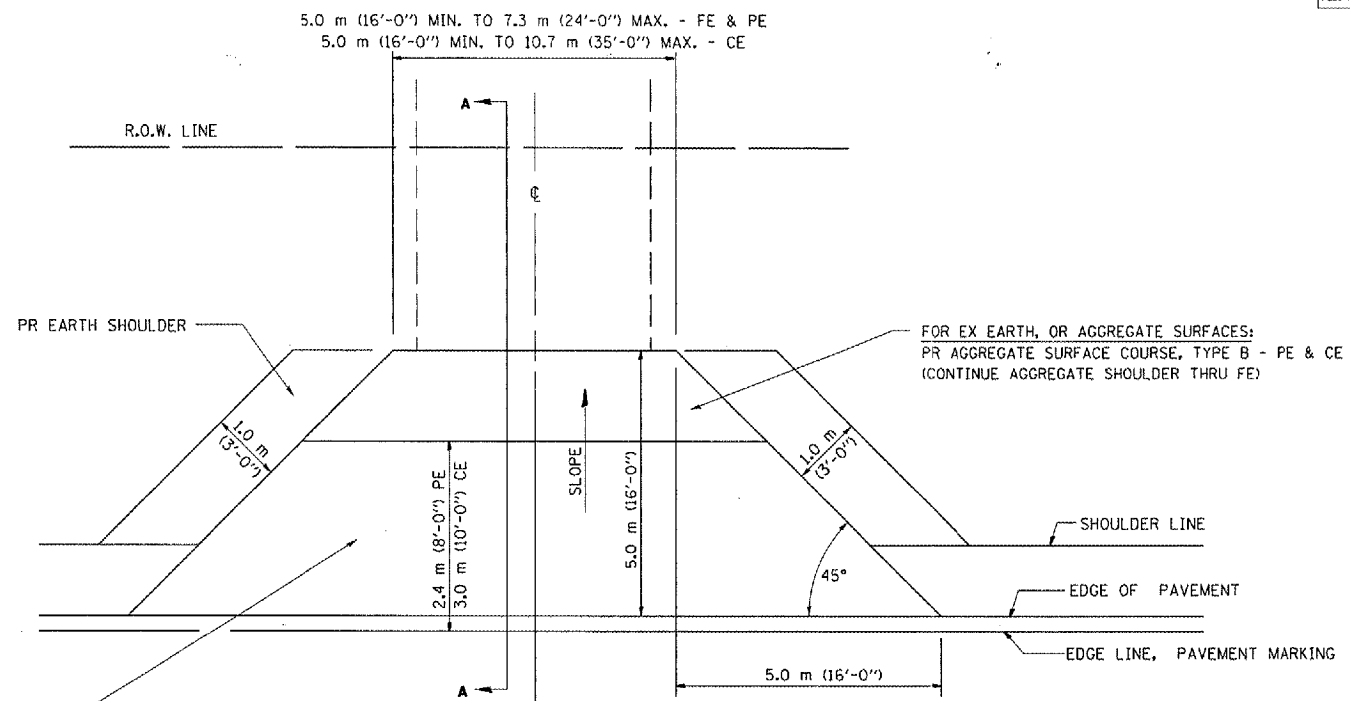
SECTION A-A FOR EX EARTH/AGGREGATE PE



SECTION A-A FOR EX EARTH/AGGREGATE CE & SIDE ROAD



SECTION A-A FOR EX BITUMINOUS/ PC CONCRETE PE, CE & SIDE ROAD



- FOR EX EARTH OR AGGREGATE SURFACES:
 PR BIT SURFACE REMOVAL (IF APPLICABLE)
 PR AGGREGATE SHOULDER THRU - FE
 PR BITUMINOUS CONCRETE 90 mm (3 1/2") - PE
 PR BITUMINOUS CONCRETE 200mm (8") - CE
- FOR BITUMINOUS OR P.C. CONCRETE SURFACES:
 PR BITUMINOUS SURFACE REMOVAL, VARIABLE DEPTH

GENERAL NOTES:

THE RESIDENT ENGINEER WILL DETERMINE THE EXACT TYPE OF IMPROVEMENT TO BE COMPLETED FOR ALL ENTRANCES, SIDEROADS AND MAILBOX TURNOUTS ON THIS PROJECT.

THE PLAN DETAILS AND SCHEDULES SHOULD BE USED AS A GUIDE FOR THE ENGINEER TO IMPLEMENT THE FINAL DESIGN. THE ENGINEER MAY DECIDE TO SALVAGE PORTIONS OF THE EXISTING ENTRANCE PAVEMENT STRUCTURE; THEREFORE, REDUCING PAY ITEM QUANTITIES. NO ADDITIONAL PAYMENT WILL BE ALLOWED FOR THIS REDUCTION IN QUANTITIES.

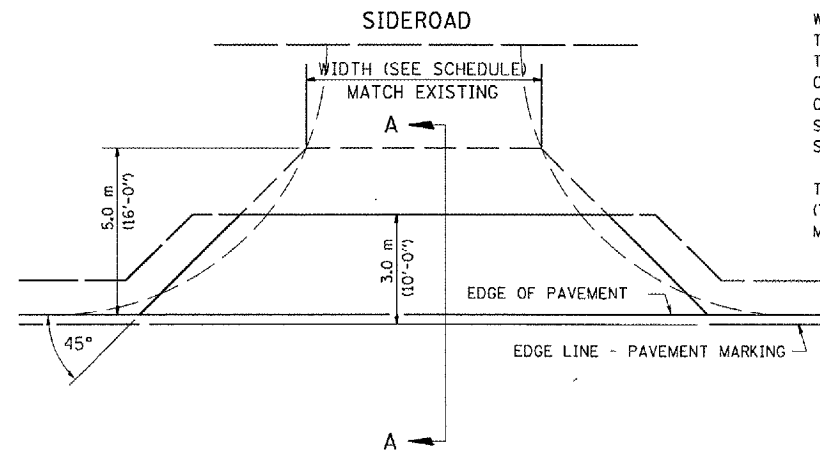
ANY WORK THE ENGINEER REQUIRES WHICH IS NOT COVERED BY A PAY ITEM CONTAINED IN THE PLANS WILL BE PAID FOR IN ACCORDANCE WITH ARTICLE 109.04 OF THE STANDARD SPECIFICATIONS.

BITUMINOUS CONCRETE REQUIRED TO CONSTRUCT THE ENTRANCES SHALL BE IN ACCORDANCE WITH THE APPLICABLE PORTIONS OF SECTION 406 AND 408 OF THE STANDARD SPECIFICATIONS AND AS DIRECTED BY THE ENGINEER.

WHEN THE BITUMINOUS CONCRETE PROPOSED FOR THE IMPROVEMENT IS THICKER THAN 75 mm (3 INCHES) AND REQUIRE PLACEMENT IN MORE THAN ONE LIFT. THE BOTTOM LIFT(S) SHALL MEET THE REQUIREMENTS OF BITUMINOUS BASE COURSE IN SECTION 406 OF THE STANDARD SPECIFICATIONS AND THE TOP LIFT OF 50 mm (2 INCHES) SHALL MEET THE REQUIREMENTS OF BITUMINOUS CONCRETE SURFACE COURSE, MIXTURE C, CLASS I, TYPE 2 OF SECTION 406 OF THE STANDARD SPECIFICATIONS.

THIS WORK WILL BE PAID FOR AT THE CONTRACT UNIT PRICE PER METRIC TON (TON) FOR "INCIDENTAL BITUMINOUS SURFACING" WHICH SHALL INCLUDE ALL MATERIALS, EQUIPMENT, AND LABOR INVOLVED.

ALL DIMENSIONS ARE IN MILLIMETERS (INCHES) UNLESS OTHERWISE SHOWN.



REVISIONS	
NAME	DATE

ILLINOIS DEPARTMENT OF TRANSPORTATION
**DETAILS FOR RURAL
 ENTRANCE, MAILBOX TURNOUT
 & SIDE ROAD**

SHEET 1 OF 3

SCALE: VERT. DRAWN BY CAD
 HORIZ. CHECKED BY JCN
 DATE: FEBRUARY 23, 1999

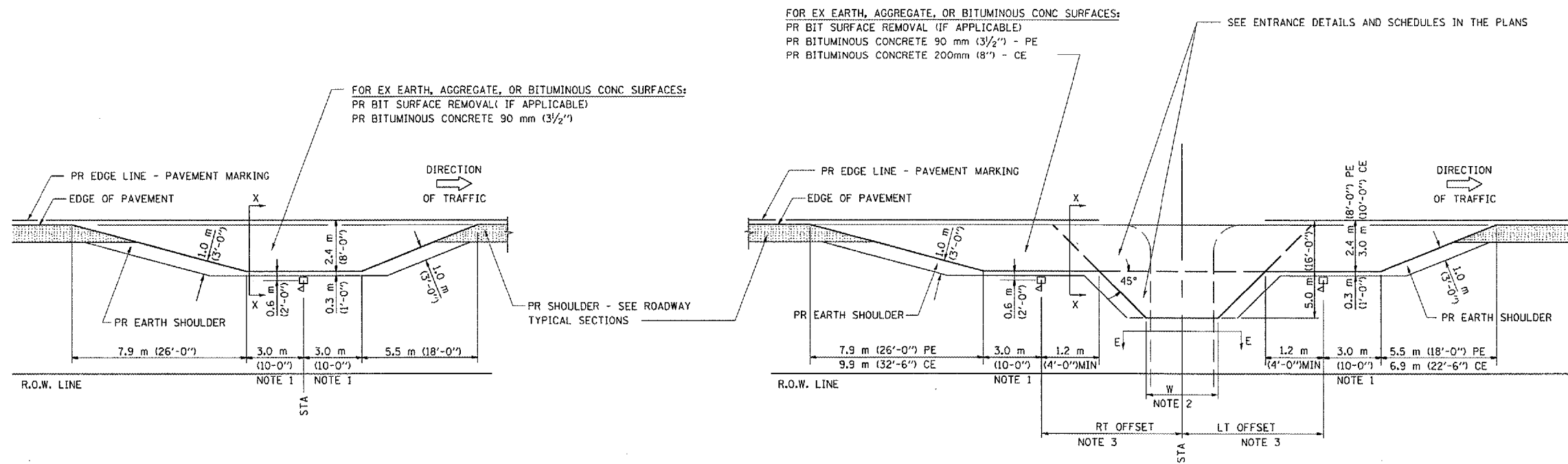
SMARTPPP

DGN-SPEC *DATE-TIME* \$TIME* *USER*

F.A.P. RTE.	SECTION	COUNTY	TOTAL SHEETS	SHEET NO.
123	150 RS	SANGAMON	28	26
STA.	TO STA.			
FED. ROAD DIST. NO.	ILLINOIS	FED. AID PROJECT		

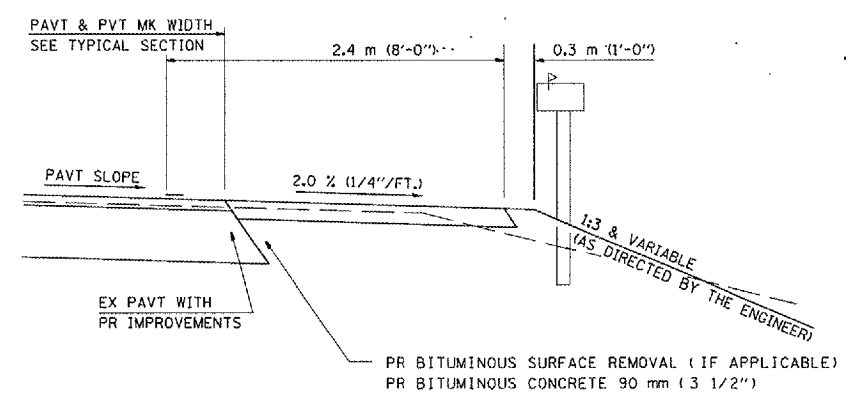
72876

DETAILS OF MAILBOX TURNOUTS

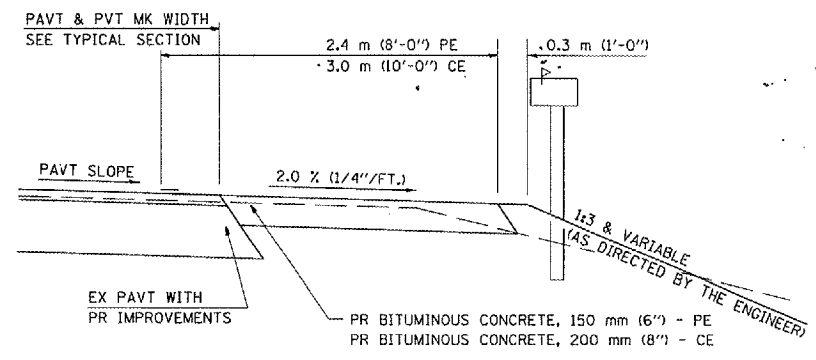


PLAN - MAILBOX TURNOUTS

PLAN - COMBINED MAILBOX TURNOUT WITH TRAILING OR LEADING ENTRANCE



SECTION X-X THRU MAILBOX TURNOUT
 ALSO APPLIES TO MAILBOX TURNOUTS COMBINED WITH EX EARTH, AGGREGATE, OR BITUMINOUS PE & FE



SECTION X-X THRU MAILBOX TURNOUT COMBINED WITH EX BITUMINOUS CONC & PC CONC PE & CE

- NOTE 1 IF MORE THAN ONE MAILBOX IS PRESENT, DIMENSION FROM CENTER OF END MAILBOX.
- NOTE 2 FOR ENTRANCE LAYOUT DIMENSIONS AND SECTIONS A-A & E-E REFER TO THE SCHEDULES IN THE PLANS.
- NOTE 3 BOTH LT OR RT OFFSETS FOR MAILBOX SHOWN USE OFFSET DIMENSION PER SCHEDULE AND REFER TO LAYOUT SHOWN ON THE PLAN.

ALL DIMENSIONS ARE IN MILLIMETERS (INCHES)
 UNLESS OTHERWISE SHOWN.

REVISIONS	
NAME	DATE

ILLINOIS DEPARTMENT OF TRANSPORTATION
**DETAILS FOR RURAL
 ENTRANCE, MAILBOX TURNOUT
 & SIDE ROAD**
 SHEET 2 OF 3
 SCALE: VERT.
 HORIZ.
 DATE: FEBRUARY 23, 1999
 DRAWN BY CAD
 CHECKED BY JCN

F.A.P. RTE.	SECTION	COUNTY	TOTAL SHEETS	SHEET NO.
123	150 R5	SANGAMON	28	27
STA.		TO STA.		
FED. ROAD DIST. NO.	ILLINOIS	FED. AID PROJECT		

72876

LOCATION		TYPE	EX MAT	AREA		INCIDENT BIT SURF TON	PREP OF BASE SQ YD	BIT MATL (PRIME COAT) TON	AGG (PRIME COAT) TON
STA.	LT/RT			EARTH/AGG/BIT	SQ FT				
89+30	RT	CE	BIT	66.0	590.09	7.3	590.09	0.02	0.13
89+70	LT	MB	BIT	40.0	360.02	4.5	360.02	0.02	0.08
96+50	LT	PE & MB	BIT	54.0	483.27	6.0	483.27	0.02	0.12
102+77	LT	MB	BIT	40.0	360.00	4.5	360.00	0.01	0.08
102+63	RT	PE	BIT	9.0	82.43	1.0	82.43	0.01	0.02
143+11	LT	PE & MB	BIT	54.0	482.68	6.0	482.68	0.02	0.11
157+04	LT	SIDEROAD	BIT	32.0	296.60	3.7	296.60	0.01	0.06
183+71	LT	MB	BIT	55.0	497.85	6.2	497.85	0.02	0.11
183+87	RT	PE	BIT	10.0	90.02	1.1	90.02	0.01	0.02
TOTAL					361.0	40.3	361.0	0.14	0.73

REVISIONS	
NAME	DATE

ILLINOIS DEPARTMENT OF TRANSPORTATION
**DETAILS FOR RURAL
ENTRANCE, MAILBOX TURNOUT
& SIDE ROAD**
SHEET 3 OF 3
SCALE: VERT.
HORIZ.
DATE: FEBRUARY 23, 1999
DRAWN BY CAD
CHECKED BY JCN

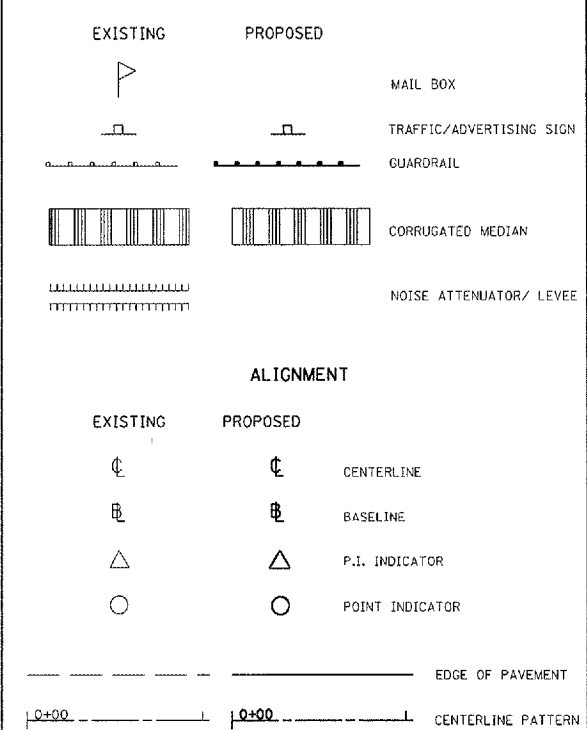
CADD STANDARD SYMBOLS

NOTE: THESE SYMBOLS SHOWN ARE IN ADDITION TO OR REPLACE SYMBOLS SHOWN ON STANDARD 1686 (STANDARD SYMBOLS AND ABBREVIATIONS).

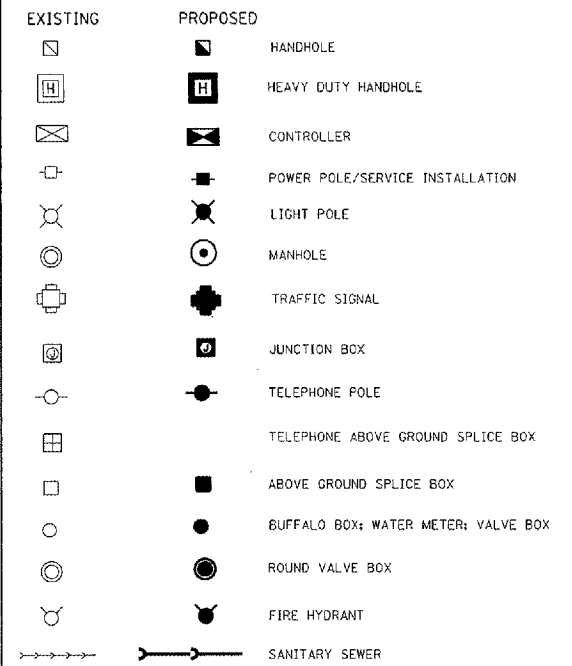
F.A. NO.	SECTION	COUNTY	TOTAL SHEETS	SHEET NO.
1645	150RS	SANGAMON	28	28
STA.		TO STA.		
FED. ROAD DIST. NO. 5		MILES		FED. AID PROJECT

72876

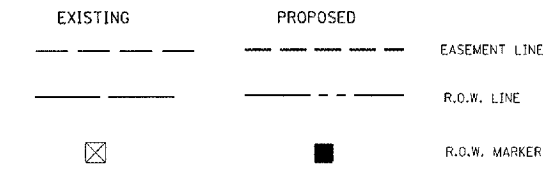
PAVEMENT PLAN ITEMS



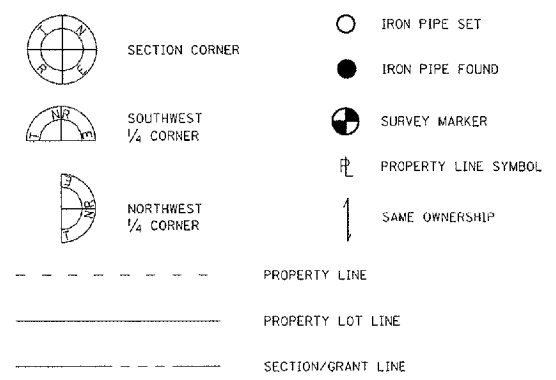
GENERAL UTILITY STRUCTURES



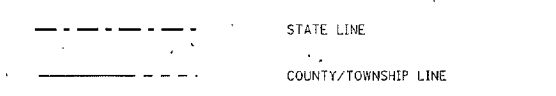
RIGHT OF WAY



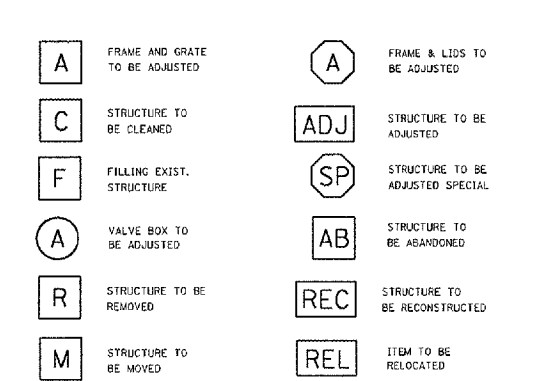
PRIVATE BOUNDARIES



POLITICAL BOUNDARIES



STRUCTURE ADJUSTMENT



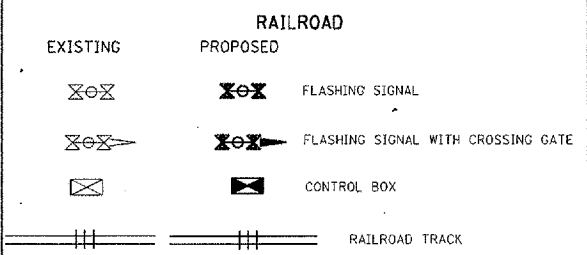
NOTE: IF ADJUSTMENT OR RECONSTRUCTION IS REQUIRED, PLACE [A] OR [C] ADJACENT TO THE ITEM SYMBOL. IF A NEW CASTING IS REQUIRED, SHOW CASTING NUMBER. USE P FOR OPEN AND C FOR CLOSED LID. EXAMPLE- CATCH BASIN TO BE ADJUSTED WITH NEW TYPE S FRAME, OPEN LID = [A] -SP

NOTE: FOR PROPOSED STRUCTURE, FIRST CHARACTER DENOTES TYPE OF STRUCTURE. USE [A] FOR SPECIAL DESIGN. SECOND CHARACTER DENOTES NUMBER OF FRAME OR GRATE. EXAMPLE- PROPOSED MANHOLE TYPE A WITH TYPE 1 FRAME AND CLOSED LID = [A]-1C

- AC - Acre
- AGG - Aggregate
- AGS - Auxiliary Gas Valve (Service)
- ASPH - Asphalt
- B-B - Back to Back
- BIND - Binder
- BIT - Bituminous
- BLOG - Building
- BLVD - Boulevard
- BM - Bench Mark
- BRK - Brick
- CB - Catch Basins
- C-C - Center to Center
- C-E - Centerline to Edge of Pavement
- C-F - Centerline to Face of Curb
- CE - Commercial Entrance
- CHSLD - Chiseled
- CIP - Cast Iron Pipe
- CL - Closed Lid
- CMP - Corrugated Metal Pipe
- COMB - Combination
- CONC - Concrete
- CONT'D - Continued
- CONT - Continuous
- CONST - Construct
- COR - Corner
- CORR - Corrugated
- CP - Clay Pipe
- CSE - Course
- CT - Coat
- CULV - Culvert
- CU YD or CY - Cubic Yard
- C&G - Curb & Gutter
- DC - Depressed Curb
- DIA - Diameter
- DOM - Domestic
- DR - Driveway
- DSFL - Downstream Flow Line
- EA - Each
- E-E - Edge to Edge
- ELEV or EL - Elevation
- EP - Edge of Pavement
- EXC - Excavation
- EXIST - Existing
- EXPWAY - Expressway
- F-F - Face to Face
- FDN - Foundation
- FE - Field Entrance
- FH - Fire Hydrant
- FL - Flow Line
- FP - Fence Post
- FR - Frame
- F&G - Frame & Grate
- GAL - Gallon
- GR - Grate
- GRAN - Granular
- GRAV - Gravel
- H - House
- HD - Heavy Duty
- HDW - Headwall
- HH - Handhole
- HORIZ - Horizontal
- HWY - Highway
- IMP - Improvement
- IN DIA - Inch Diameter
- INL - Inlet
- INV - Invert
- IP - Iron Pipe or Iron Pin
- IR - Iron Rod
- JT - Joint
- L - Lane
- LF or LIN FT - Lineal Feet or Linear Feet
- LP - Light Pole
- L SUM - Lump Sum
- LT - Left
- MACH - Machine
- MATL - Material
- MED - Median
- METH - Method
- MH - Manhole
- MIX - Mixture
- MOD - Modified
- N&BC - Nail and Bottle Cap
- N&C - Nail and Cap
- N&W - Nail and Washer
- OL - Open Lid
- PAVT - Pavement
- PC - Pipe Culvert (Existing)
- PCC - Portland Cement Concrete
- PE - Private Entrance
- PL - Property Line
- PP - Power Pole
- PR - Prime
- PROP - Proposed
- R - Radius
- RCCP - Reinforced Concrete Culvert Pipe
- RD - Road
- REF - Reflective
- REINF - Reinforcement
- REM - Removal
- REPL - Replacement
- REST - Restaurant
- RESURF - Resurfacing
- ROW - Right of Way
- RR - Railroad
- RRS - Railroad Spike
- RT - Right
- RTE - Route
- SANS - Sanitary Sewer
- SD - Special Ditch
- SEC - Section
- SEED - Seeding
- SF or SQ FT - Square Feet
- SHAP - Shaping
- SHLD - Shoulders
- SM - Survey Marker
- SOD - Sodding
- SPBGR - Steel Plate Beam Guardrail
- SPL - Special
- SS - Storm Sewer (Existing)
- ST - Street
- STA - Station
- STD - Standard
- SURF - Surface
- SW - Sidewalk
- SY or SQ YD - Square Yard
- TBE - To Be Extended
- TBR - To Be Removed
- TBS - To Be Saved
- TD - Tile Drain
- TEL - Telephone
- TP - Telephone Pole
- TWP - Township
- T-# - Type-# (Specifies Type)
- USFL - Upstream Flowline
- VV - Valve Vault
- WM - Watermain
- WV - Water Valve

CURVE DATA

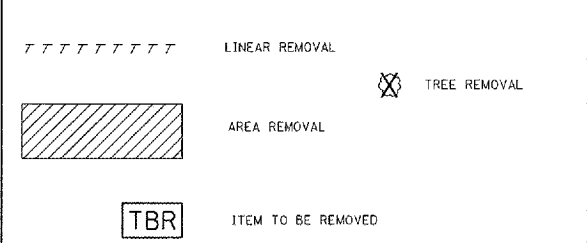
- Δ - Deflection Angle
- D - Degree of Curve
- T - Tangent Length
- L - Curve Length
- R - Radius of Curve
- E - External Distance
- SE - Superelevation (ft. per ft. of width)
- PC - Point of Curvature
- PI - Point of Intersection
- PT - Point of Tangency
- POT - Point on Tangent
- PCC - Point of Compound Curvature
- PRC - Point of Reverse Curvature
- VPI - Vertical Curve Point of Intersection



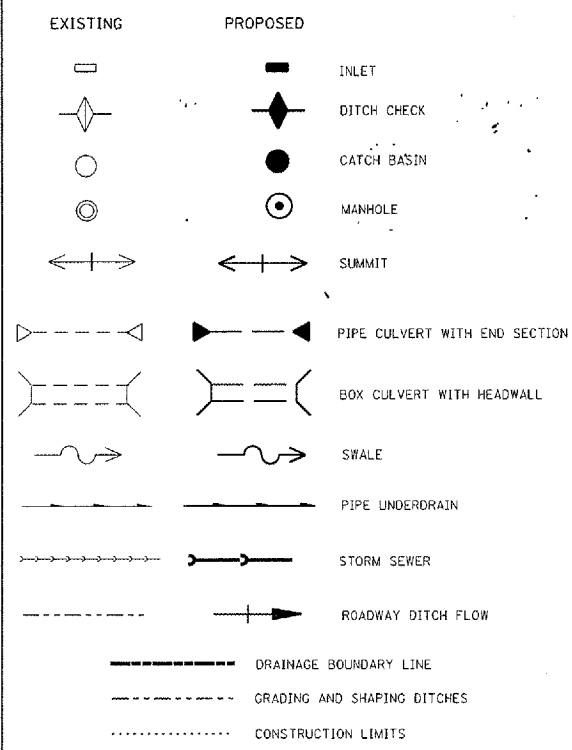
VEGETATION FEATURES



REMOVAL ITEMS



DRAINAGE STRUCTURES



ILLINOIS DEPARTMENT OF TRANSPORTATION
CADD STANDARD SYMBOLS

F.A.S. ROUTE 1645
SECTION 150R
SANGAMON COUNTY

REVISIONS	
NAME	DATE
CAD	4-10-89