

F.A.P. RTE.	SECTION	COUNTY	TOTAL SHEETS	SHEET NO.
310		SCHUYLER	46	24

STA.	TO STA.
FED. ROAD DIST. NO.	ILLINOIS FED. AID PROJECT

• (07-11)-1, TS-2

TEMPORARY SIGNAL NOTES:

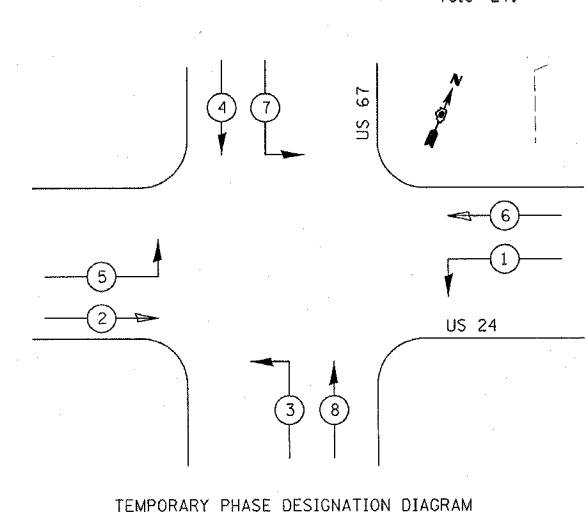
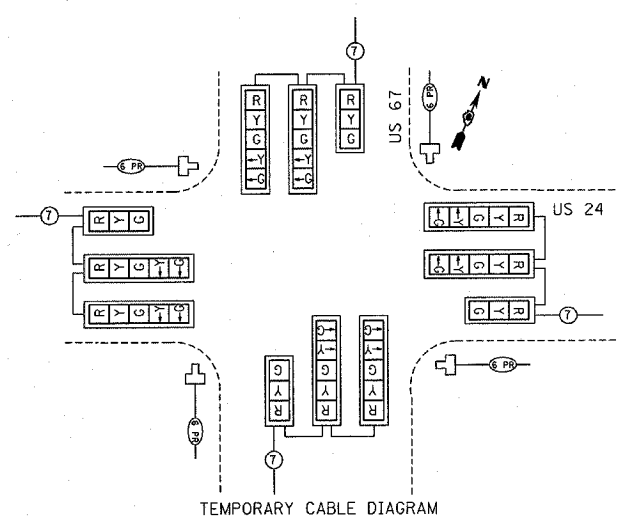
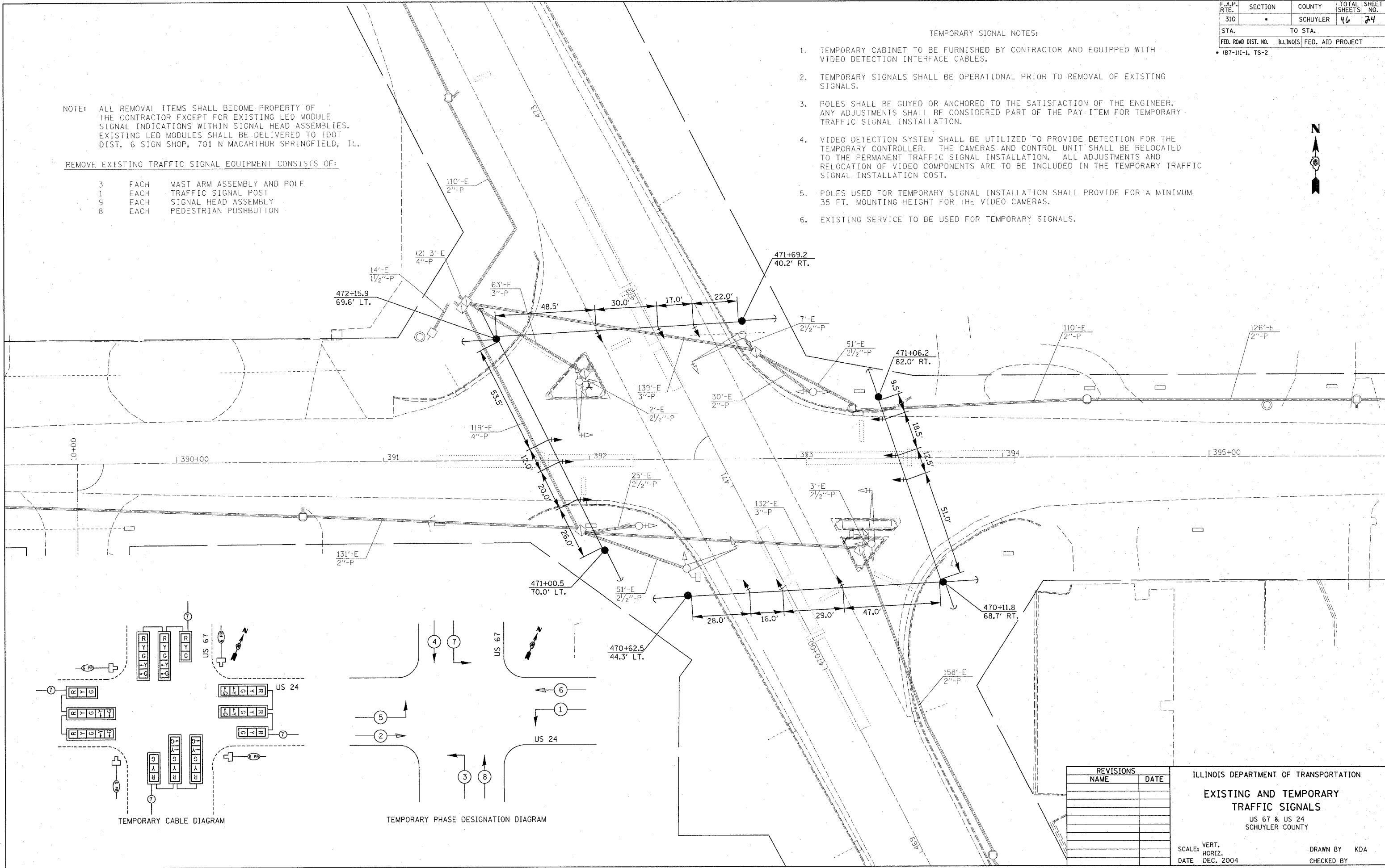
1. TEMPORARY CABINET TO BE FURNISHED BY CONTRACTOR AND EQUIPPED WITH VIDEO DETECTION INTERFACE CABLES.
2. TEMPORARY SIGNALS SHALL BE OPERATIONAL PRIOR TO REMOVAL OF EXISTING SIGNALS.
3. POLES SHALL BE GUYED OR ANCHORED TO THE SATISFACTION OF THE ENGINEER. ANY ADJUSTMENTS SHALL BE CONSIDERED PART OF THE PAY ITEM FOR TEMPORARY TRAFFIC SIGNAL INSTALLATION.
4. VIDEO DETECTION SYSTEM SHALL BE UTILIZED TO PROVIDE DETECTION FOR THE TEMPORARY CONTROLLER. THE CAMERAS AND CONTROL UNIT SHALL BE RELOCATED TO THE PERMANENT TRAFFIC SIGNAL INSTALLATION. ALL ADJUSTMENTS AND RELOCATION OF VIDEO COMPONENTS ARE TO BE INCLUDED IN THE TEMPORARY TRAFFIC SIGNAL INSTALLATION COST.
5. POLES USED FOR TEMPORARY SIGNAL INSTALLATION SHALL PROVIDE FOR A MINIMUM 35 FT. MOUNTING HEIGHT FOR THE VIDEO CAMERAS.
6. EXISTING SERVICE TO BE USED FOR TEMPORARY SIGNALS.



NOTE: ALL REMOVAL ITEMS SHALL BECOME PROPERTY OF THE CONTRACTOR EXCEPT FOR EXISTING LED MODULE SIGNAL INDICATIONS WITHIN SIGNAL HEAD ASSEMBLIES. EXISTING LED MODULES SHALL BE DELIVERED TO IDOT DIST. 6 SIGN SHOP, 701 N MACARTHUR SPRINGFIELD, IL.

REMOVE EXISTING TRAFFIC SIGNAL EQUIPMENT CONSISTS OF:

- | | | |
|---|------|----------------------------|
| 3 | EACH | MAST ARM ASSEMBLY AND POLE |
| 1 | EACH | TRAFFIC SIGNAL POST |
| 9 | EACH | SIGNAL HEAD ASSEMBLY |
| 8 | EACH | PEDESTRIAN PUSHBUTTON |



REVISIONS	
NAME	DATE

ILLINOIS DEPARTMENT OF TRANSPORTATION
EXISTING AND TEMPORARY TRAFFIC SIGNALS
 US 67 & US 24
 SCHUYLER COUNTY

SCALE: VERT. DRAWN BY KDA
 HORIZ. CHECKED BY
 DATE DEC. 2004

PLOT DATE = 4/15/2005
 FILE NAME = c:\prowork\652184\ts_sheets.dgn
 PLOT SCALE = 1/8" = 1'-0"