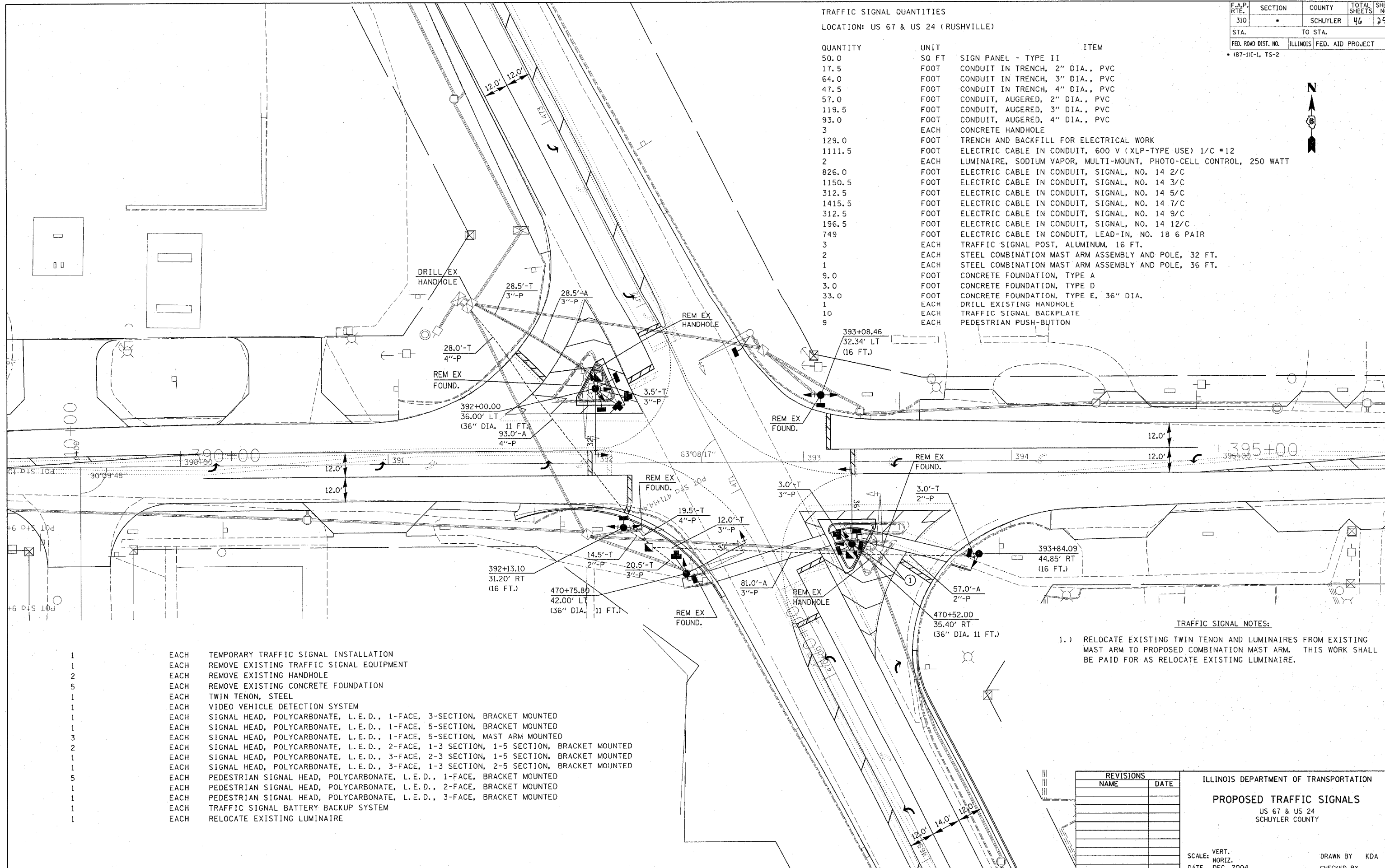


F.A.P. RTE.	SECTION	COUNTY	TOTAL SHEETS	SHEET NO.
310		SCHUYLER	46	25
STA.		TO STA.		
FED. ROAD DIST. NO.	ILLINOIS	FED. AID PROJECT		

TRAFFIC SIGNAL QUANTITIES  
 LOCATION: US 67 & US 24 (RUSHVILLE)

QUANTITY	UNIT	ITEM
50.0	SQ FT	SIGN PANEL - TYPE II
17.5	FOOT	CONDUIT IN TRENCH, 2" DIA., PVC
64.0	FOOT	CONDUIT IN TRENCH, 3" DIA., PVC
47.5	FOOT	CONDUIT IN TRENCH, 4" DIA., PVC
57.0	FOOT	CONDUIT, AUGERED, 2" DIA., PVC
119.5	FOOT	CONDUIT, AUGERED, 3" DIA., PVC
93.0	FOOT	CONDUIT, AUGERED, 4" DIA., PVC
3	EACH	CONCRETE HANDHOLE
129.0	FOOT	TRENCH AND BACKFILL FOR ELECTRICAL WORK
1111.5	FOOT	ELECTRIC CABLE IN CONDUIT, 600 V (XLP-TYPE USE) 1/C #12
2	EACH	LUMINAIRE, SODIUM VAPOR, MULTI-MOUNT, PHOTO-CELL CONTROL, 250 WATT
826.0	FOOT	ELECTRIC CABLE IN CONDUIT, SIGNAL, NO. 14 2/C
1150.5	FOOT	ELECTRIC CABLE IN CONDUIT, SIGNAL, NO. 14 3/C
312.5	FOOT	ELECTRIC CABLE IN CONDUIT, SIGNAL, NO. 14 5/C
1415.5	FOOT	ELECTRIC CABLE IN CONDUIT, SIGNAL, NO. 14 7/C
312.5	FOOT	ELECTRIC CABLE IN CONDUIT, SIGNAL, NO. 14 9/C
196.5	FOOT	ELECTRIC CABLE IN CONDUIT, SIGNAL, NO. 14 12/C
749	FOOT	ELECTRIC CABLE IN CONDUIT, LEAD-IN, NO. 18 6 PAIR
3	EACH	TRAFFIC SIGNAL POST, ALUMINUM, 16 FT.
2	EACH	STEEL COMBINATION MAST ARM ASSEMBLY AND POLE, 32 FT.
1	EACH	STEEL COMBINATION MAST ARM ASSEMBLY AND POLE, 36 FT.
9.0	FOOT	CONCRETE FOUNDATION, TYPE A
3.0	FOOT	CONCRETE FOUNDATION, TYPE D
33.0	FOOT	CONCRETE FOUNDATION, TYPE E, 36" DIA.
1	EACH	DRILL EXISTING HANDHOLE
10	EACH	TRAFFIC SIGNAL BACKPLATE
9	EACH	PEDESTRIAN PUSH-BUTTON



- 1 EACH TEMPORARY TRAFFIC SIGNAL INSTALLATION
- 1 EACH REMOVE EXISTING TRAFFIC SIGNAL EQUIPMENT
- 2 EACH REMOVE EXISTING HANDHOLE
- 5 EACH REMOVE EXISTING CONCRETE FOUNDATION
- 1 EACH TWIN TENON, STEEL
- 1 EACH VIDEO VEHICLE DETECTION SYSTEM
- 1 EACH SIGNAL HEAD, POLYCARBONATE, L.E.D., 1-FACE, 3-SECTION, BRACKET MOUNTED
- 1 EACH SIGNAL HEAD, POLYCARBONATE, L.E.D., 1-FACE, 5-SECTION, BRACKET MOUNTED
- 3 EACH SIGNAL HEAD, POLYCARBONATE, L.E.D., 1-FACE, 5-SECTION, MAST ARM MOUNTED
- 2 EACH SIGNAL HEAD, POLYCARBONATE, L.E.D., 2-FACE, 1-3 SECTION, 1-5 SECTION, BRACKET MOUNTED
- 1 EACH SIGNAL HEAD, POLYCARBONATE, L.E.D., 3-FACE, 2-3 SECTION, 1-5 SECTION, BRACKET MOUNTED
- 1 EACH SIGNAL HEAD, POLYCARBONATE, L.E.D., 3-FACE, 1-3 SECTION, 2-5 SECTION, BRACKET MOUNTED
- 5 EACH PEDESTRIAN SIGNAL HEAD, POLYCARBONATE, L.E.D., 1-FACE, BRACKET MOUNTED
- 1 EACH PEDESTRIAN SIGNAL HEAD, POLYCARBONATE, L.E.D., 2-FACE, BRACKET MOUNTED
- 1 EACH PEDESTRIAN SIGNAL HEAD, POLYCARBONATE, L.E.D., 3-FACE, BRACKET MOUNTED
- 1 EACH TRAFFIC SIGNAL BATTERY BACKUP SYSTEM
- 1 EACH RELOCATE EXISTING LUMINAIRE

TRAFFIC SIGNAL NOTES:  
 1.) RELOCATE EXISTING TWIN TENON AND LUMINAIRES FROM EXISTING MAST ARM TO PROPOSED COMBINATION MAST ARM. THIS WORK SHALL BE PAID FOR AS RELOCATE EXISTING LUMINAIRE.

REVISIONS	
NAME	DATE

ILLINOIS DEPARTMENT OF TRANSPORTATION  
**PROPOSED TRAFFIC SIGNALS**  
 US 67 & US 24  
 SCHUYLER COUNTY

SCALE: VERT. \_\_\_\_\_  
 HORIZ. \_\_\_\_\_  
 DATE DEC. 2004  
 DRAWN BY KDA  
 CHECKED BY \_\_\_\_\_

PLOT DATE = 4/5/2005  
 PLOT NAME = 1855210A (s. sheneta.dgn)  
 PLOT SCALE = 1/8"=1'-0" / 1/4"