

F.A.P. RTE.	SECTION	COUNTY	TOTAL SHEETS	SHEET NO.
502		ADAMS	3/5	7
STA.		TO STA.		
FED. ROAD DIST. NO.		ILLINOIS	FED. AID PROJECT	

EARTHWORK SCHEDULE			
	EARTH EXCAVATION - CU YD	EMBANKMENT - CU YD	WASTE - CU YD
IL 57			
STAGE ONE	2527	148	2349
STAGE TWO	3241	11	3228
STAGE THREE	1790	890	722
STAGE FOUR	0	6	0
STAGE FIVE	480	211	227
RADIO ROAD			
STAGE ONE	0	0	0
STAGE TWO	111	46	55
STAGE THREE	2025	484	1444
STAGE FOUR	442	109	311
STAGE FIVE	493	75	403
TOTAL	11109	1980	8739

NOTES: 1) Embankment quantity for information only
2) 20% Shrinkage Factor included

STORM SEWER SCHEDULE FOOT					
LOCATION	SS, CL A, TY 1 - 12"	SS, CL A, TY 2 - 12"	SS, CL A, TY 2 - 18"	SS, CL A, TY 2 - 24"	TRENCH BACKFILL (CY)
ALONG IL 57					
STA 142+31.00, 32.00' RT TO					
STA 142+75.00, 34.00' RT	45				6
ST 1 to ST 2	25				3
ST 5 to ST 4	41				10
ST 2 to ST 3		51			42
ST 3 to ST 4		203			161
ST 4 to ST 6			150		103
ST 6 to ST 7			159		65
ST 7 to ST 8			165		131
ST 10 to ST 9			21		7
ST 9 to ST 8			7		4
ALONG RADIO ROAD					
STA 45+75.00, 29.00' LT TO					
STA 46+75.00, 29' LT			77		53
STA 47+25.00, 42.10' RT TO					
STA 49+93.69, 37.77' RT				203	340
ALONG SIXTH STREET					
STA 9+00.00, CL					
TOTALS	111	254	579	203	925

STRIPING SCHEDULE								
LOCATION	POLYUREA PAVEMENT MARKING SPECIAL							
	LINE 5" - FT		LINE 6" - FT	LINE 8" - FT	LINE 12" - FT		LINE 24" - FT	LET & SYM - SQ FT
	WHITE	YELLOW	WHITE	WHITE	WHITE	YELLOW	WHITE	WHITE
STA 138+00 to 143+00	1067	1142				18	24	15.6
STA 143+00 to 148+50	1409	1102	88					78
STA 148+50 to 74+00	1584	637	15	39	10	27	161	119.6
STA 74+00 to 79+50	1335	1102	70	147	34		24	108
STA 79+50 to 81+27	354	354						
STA 42+50 to 45+50	703	760				63		
STA 45+50 to 50+00	1227	982		217	79	240	90	153.6
SUBTOTAL	7679	6079			123	348		
TOTALS	13758	173	403		471	299		474.8

REFLECTIVE PAVEMENT MARKER SCHEDULE - EACH			
LOCATION	TWO WAY AMBER	ONE WAY AMBER	ONE WAY CRYSTAL
JOBSITE	38	124	49
TOTALS		211	

* ELLIPTICAL STORM SEWER SCHEDULE				
LOCATION	PIPE CULVERTS, TY 1, RC, EQRS - 24" FOOT	PRC FLARED END SECTION, EQRS - 24" EACH	REINF CONC- PIPE ELBOW 4" EACH	END SECTIONS - 12" EACH
ALONG RADIO ROAD				
STA 40+71.10, 29.00' RT to				
STA 43+08.00, 28.6' RT	225	2		
STA41+63.30, 23.90' RT			1	
STA41+74.00, 29.00' RT				1
TOTALS	225	2	1	1

* this schedule is for tying into the county highway project at the most westerly section of the improvement

STORM SEWER JACKED IN PLACE SCHEDULE		
LOCATION	SS, JIP - 24"	PC, TY 1 RC, EQIV RND SIZ 18" JACKED IN PLACE
STA 44+45.47, 31' RT		96
STA 44+59.97, 34.43' LT		84
ALONG RADIO ROAD		
24" storm sewer run from sta. 47+25.00,		
42.10' RT to sta 49+93.69, 37.77' RT	60	
TOTALS	60	180

REVISIONS	
NAME	DATE

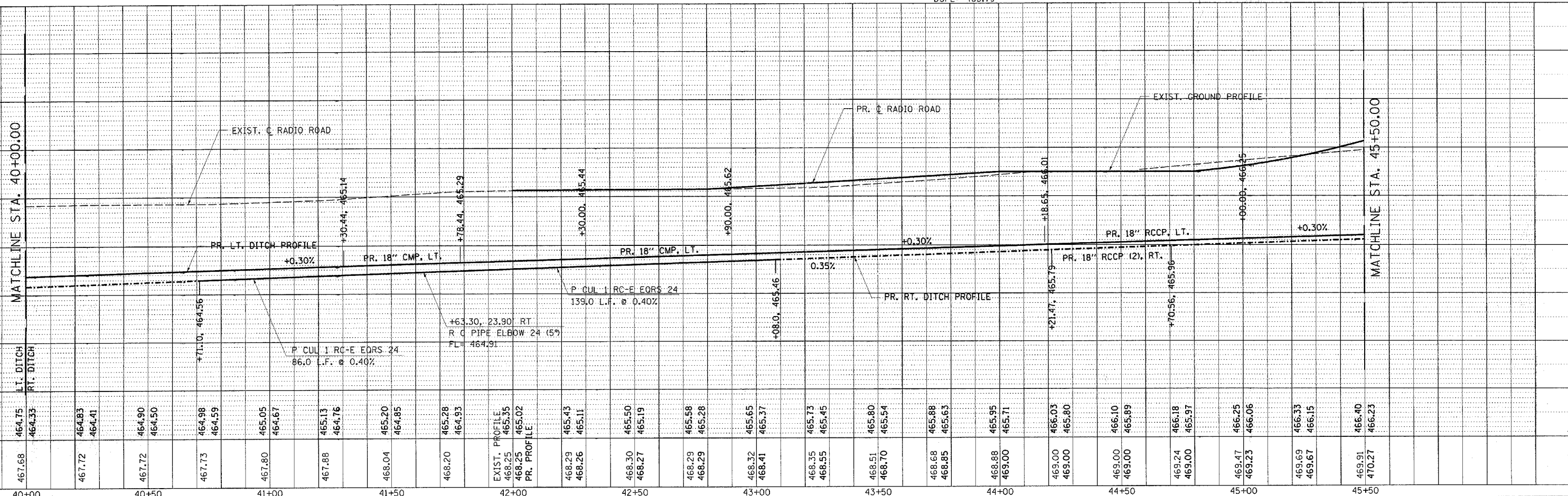
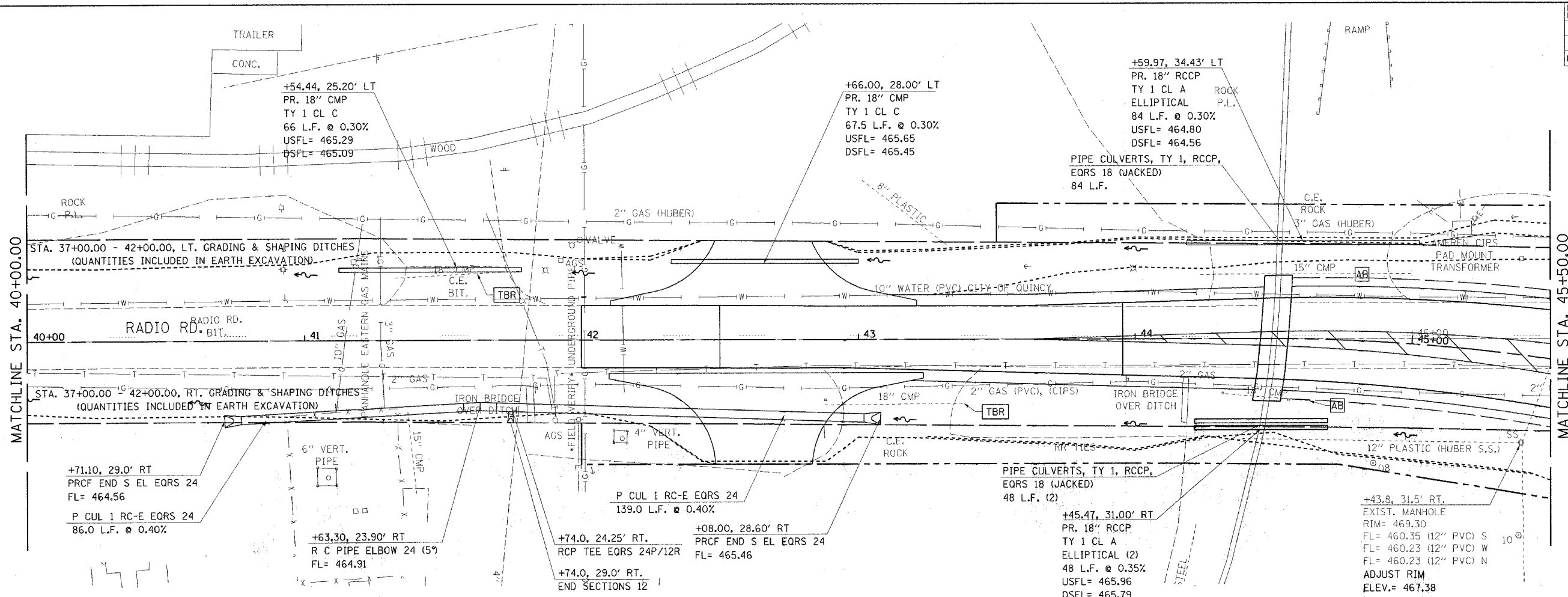
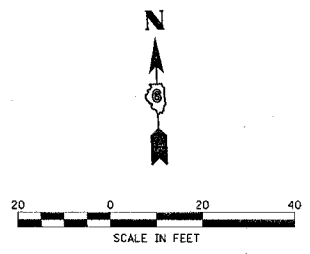
ILLINOIS DEPARTMENT OF TRANSPORTATION
SCHEDULE OF QUANTITIES
FAP 502 (IL 57) & RADIO ROAD
SECTION (53RS-7, P(IRS-2)) N, TS
ADAMS COUNTY
QUINCY, IL

SCALE: VERT.
HORIZ.
DATE 01-23-04

DRAWN BY TMJ
CHECKED BY MEB

Rev. Sheet 6-3-05

F.A.P. RTE.	SECTION	COUNTY	TOTAL SHEETS	SHEET NO.
502		ADAMS	3/5	49
STA.		TO STA.		
FED. ROAD DIST. NO.		ILLINOIS FED. AID PROJECT		
[53RS-7, PIRS-2]N, TS				
CONTRACT NO. 72897				



PLAN	DATE
DATE	BY
NO.	NO.
NO.	NO.
NO.	NO.

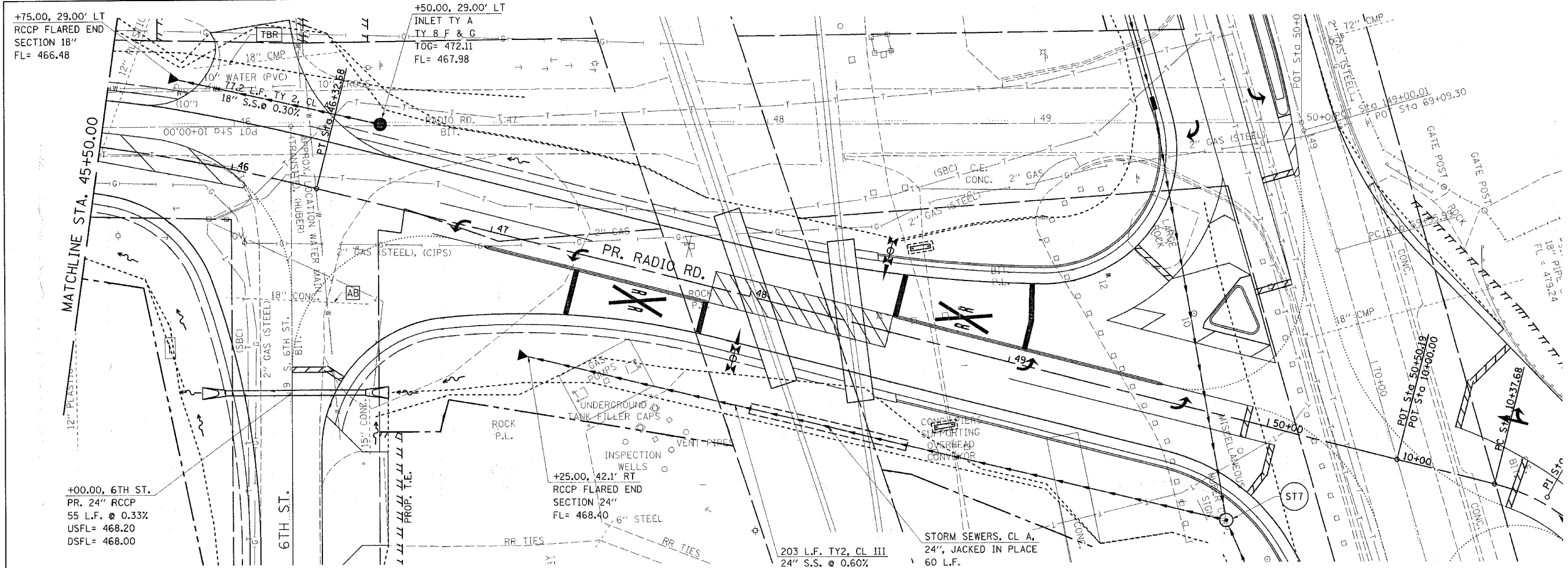
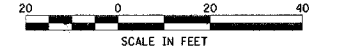
PROFILE	DATE
DATE	BY
NO.	NO.
NO.	NO.
NO.	NO.

DGN-SPEC
 DATE-TIME
 *REF01

F.A.P. RTE.	SECTION	COUNTY	TOTAL SHEETS	SHEET NO.
502		ADAMS	315	50

STA. TO STA.
FED. ROAD DIST. NO. ILLINOIS FED. AID PROJECT

• (53RS-7, PIRS-2)JN, TS
CONTRACT NO. 72897



PLAN	SURVEYED	BY	DATE
	PLOTTED		
	CHECKED		
	DATE		
	NO.		

+75.00, 29.00' LT
RCCP FLARED END
SECTION 18"
FL= 466.48

+50.00, 29.00' LT
INLET TY A
TY 8 F & G
TOG= 472.11
FL= 467.98

+00.00, 6TH ST.
PR. 24" RCCP
55 L.F. @ 0.33%
USFL= 468.20
DSFL= 468.00

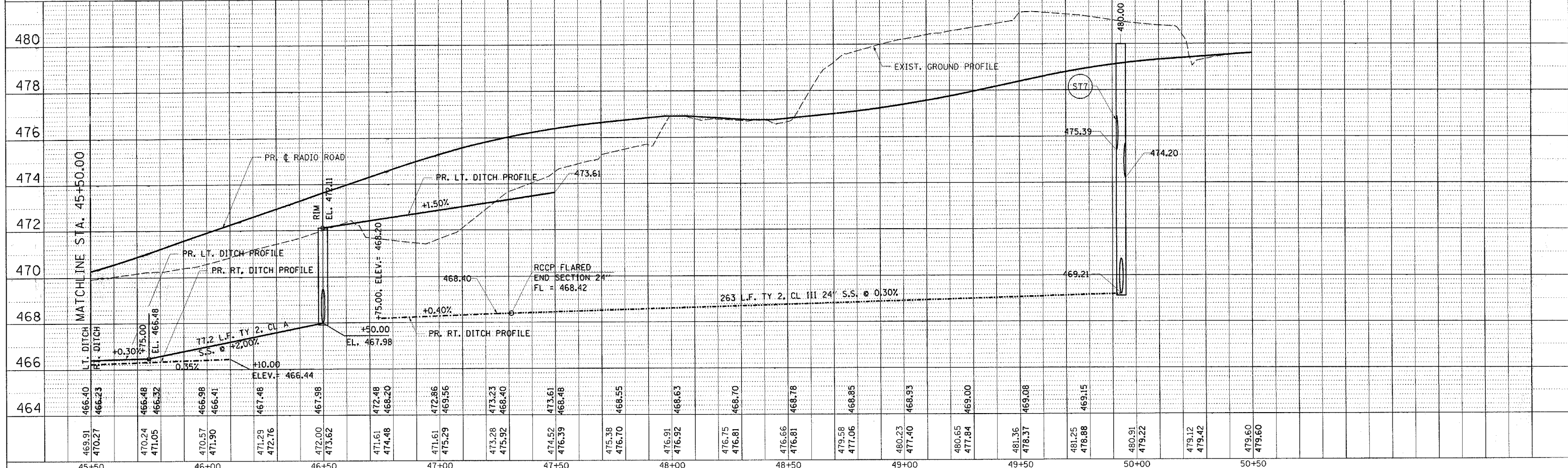
6TH ST.

PR. RADIO RD.

203 L.F. TY 2, CL III
24" S.S. @ 0.60%

STORM SEWERS, CL A,
24", JACKED IN PLACE
60 L.F.

ST7 70+41.95, 67.8' RT (IL 57) =
49+93.69, 37.77' RT. (PR. RADIO RD.)
MANHOLE TY A
4' DIA., TY 8 F & G
RIM= 480.00
FL= 475.39 (N)
FL= 474.20 (S)
FL= 469.21 (W)



PROFILE	SURVEYED	BY	DATE
	PLOTTED		
	CHECKED		
	DATE		
	NO.		