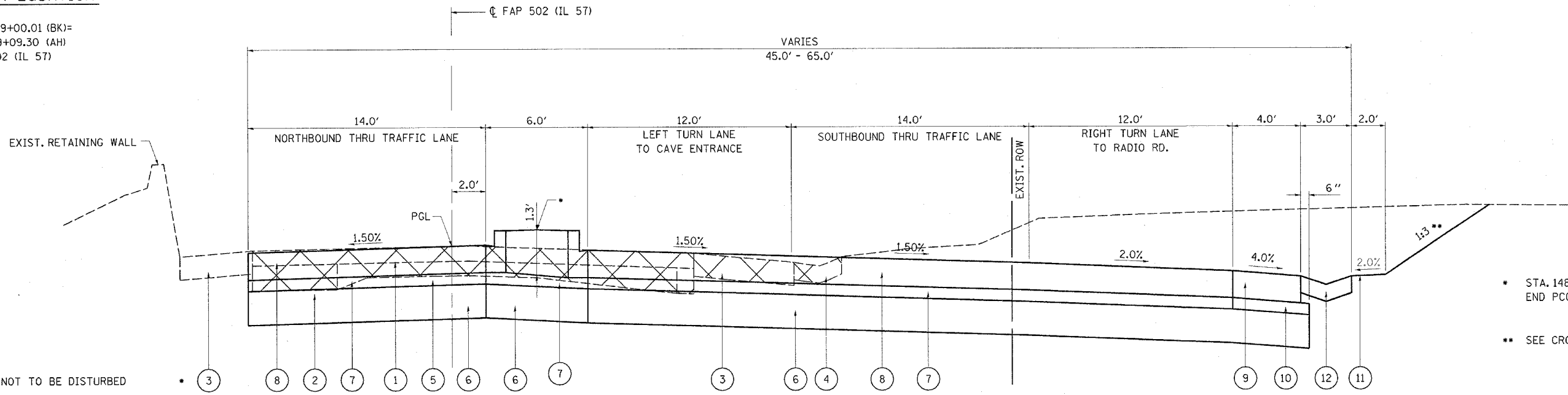


STATION EQUATION

STA. 149+00.01 (BK)=
 STA. 69+09.30 (AH)
 FAP 502 (IL 57)

F.A.P. RTE.	SECTION	COUNTY	TOTAL SHEETS	SHEET NO.
502	*	ADAMS	315	11
STA.		TO STA.		
FED. ROAD DIST. NO.		ILLINOIS FED. AID PROJECT		
* (53RS-7, P(RS-2)IN, TS				
CONTRACT NO. 72897				

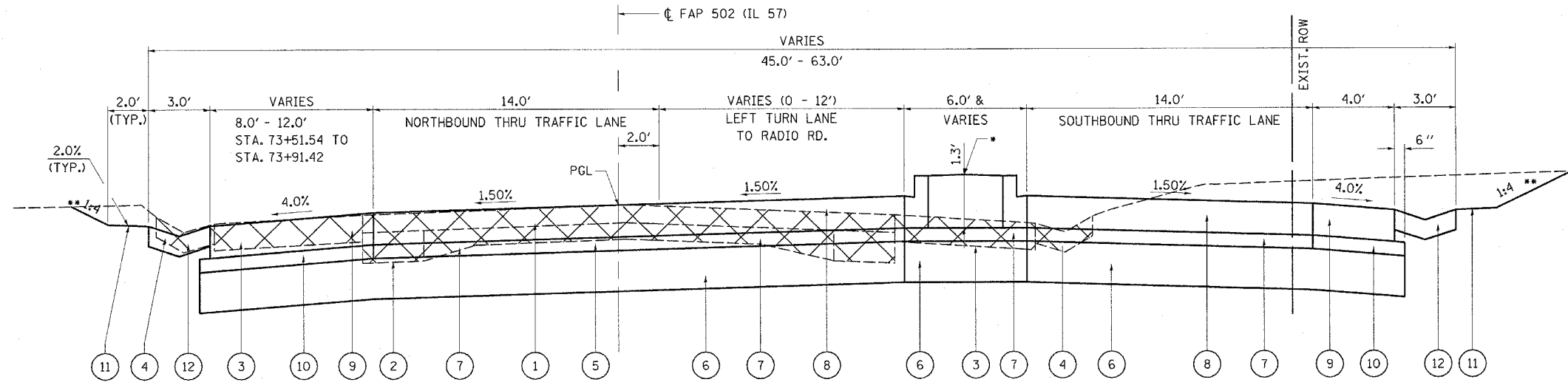


• NOT TO BE DISTURBED

• STA. 148+90.39, 5.50' RT.
 END PCC MEDIAN, TY M6.06
 ** SEE CROSS SECTIONS

NORMAL CROWN

STA. 147+81.61 - 70+37.50
 STATION EQUATION:
 STA. 70+37.50 [FAP 502 (IL 57)]=
 STA. 50+50.19 PROP. RADIO RD.



** SEE CROSS SECTIONS

** SEE CROSS SECTIONS

NORMAL CROWN

STA. 70+37.50 - 74+93.80
 STATION EQUATION:
 STA. 70+37.50 [FAP 502 (IL 57)]=
 STA. 50+50.19 PROP. RADIO RD.

• STA. 71+75.26, 16.50' RT.
 BEGIN PCC MEDIAN, TY M6.06

- | | | |
|--|--|--|
| ① EXISTING BITUMINOUS SURFACE COURSE (5.25") | ⑤ EXISTING 9-6-9 PAVEMENT | ⑨ PROP. TIED P.C.C. SHOULDER (10") |
| ② EXISTING P.C.C. BASE COURSE (12") | ⑥ PROP. SUB-BASE GRANULAR MATERIAL TY B (12") | ⑩ PROP. SUB-BASE GRANULAR MATERIAL, TYPE C (4") |
| ③ EXISTING CONCRETE SHOULDER (8") | ⑦ PROP. STABILIZED SUB-BASE, (BAM FOR CRCP) (4") | ⑪ PROP. EARTH SHOULDER (2.0') UNLESS OTHERWISE INDICATED |
| ④ EXISTING TY A GUTTER | ⑧ PROP. P.C.C. PAVEMENT (10") | ⑫ PROP. TY A GUTTER |

LEGEND

EXIST. PAVEMENT REMOVAL



REVISIONS	
NAME	DATE

ILLINOIS DEPARTMENT OF TRANSPORTATION
TYPICAL SECTIONS
 FAP 502 (IL 57) & RADIO ROAD
 SEC. (53RS-7, P(RS-2)IN, TS
 ADAMS COUNTY
 QUINCY, IL.

SCALE: VERT. _____
 HORIZ. _____
 DATE 06-03-04
 DRAWN BY TMJ
 CHECKED BY MEB

c:\projects\6653004\typicals.dgn
 2/27/2005
 *REF01