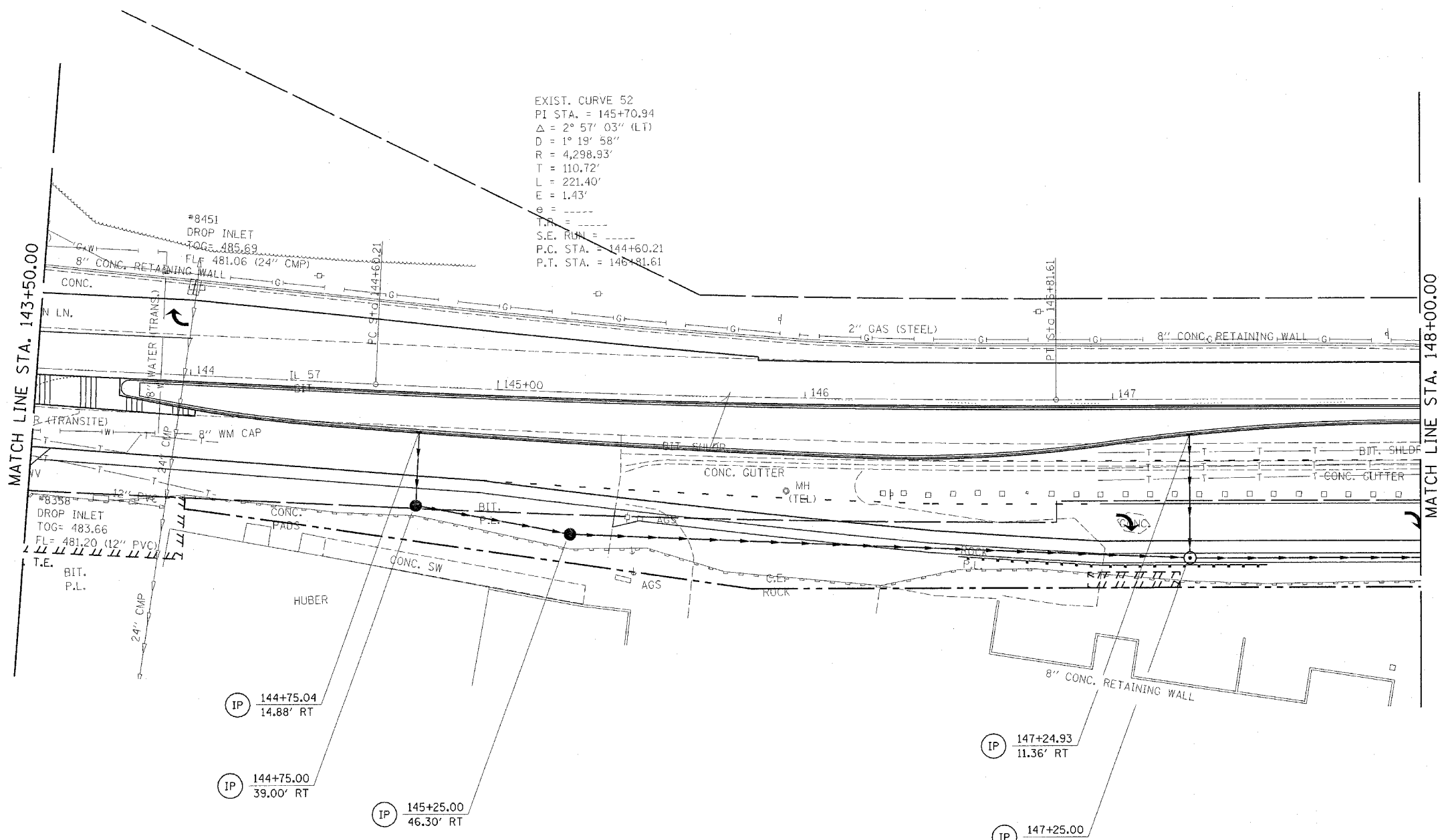
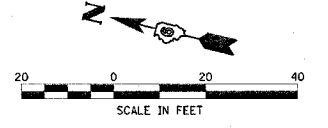


F.A.P. RTE.	SECTION	COUNTY	TOTAL SHEETS	SHEET NO.
502		ADAMS	315	95

STA. TO STA.
FED. ROAD DIST. NO. ILLINOIS FED. AID PROJECT

• [53RS-7, PIRS-2] IN, TS
CONTRACT NO. 72897



EXIST. CURVE 52
PI STA. = 145+70.94
 $\Delta = 2^\circ 57' 03''$ (LT)
D = 1° 19' 58"
R = 4,298.93'
T = 110.72'
L = 221.40'
E = 1.43'
e = -----
T.M. = -----
S.E. RUN = -----
P.C. STA. = 144+60.21
P.T. STA. = 146+81.61

c:\projects\653004\ersnctl.dgn
2/3/2006
*REF01

LEGEND

- PERIMETER EROSION BARRIER
- INLET AND PIPE PROTECTION
- TEMPORARY DITCH CHECK

REVISIONS	
NAME	DATE

ILLINOIS DEPARTMENT OF TRANSPORTATION
EROSION CONTROL
F.A.P. 502 (IL 57) & RADIO RD.
ADAMS COUNTY
QUINCY, IL.
SCALE: VERT. _____
 HORIZ. _____
DATE 04-13-04
DRAWN BY TMJ
CHECKED BY MEB