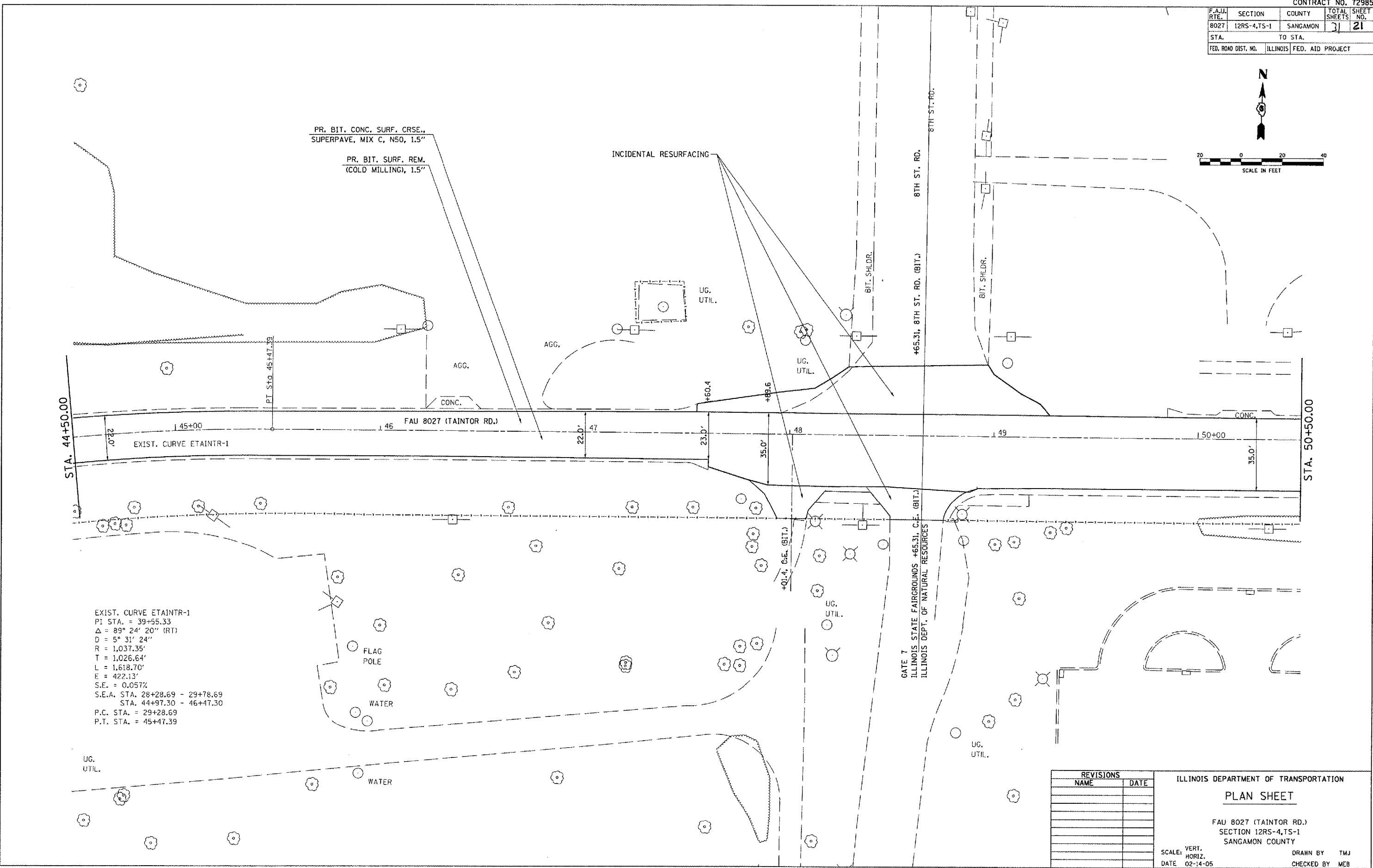
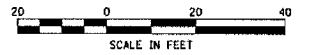


F.A.U. RTE.	SECTION	COUNTY	TOTAL SHEETS	SHEET NO.
8027	12RS-4,TS-1	SANGAMON	21	21
STA.		TO STA.		
FED. ROAD DIST. NO.		ILLINOIS	FED. AID PROJECT	



PR. BIT. CONC. SURF. CRSE.,  
SUPERPAVE, MIX C, NS0, 1.5"

PR. BIT. SURF. REM.  
(COLD MILLING), 1.5"

INCIDENTAL RESURFACING

AGG.

UG.  
UTIL.

UG.  
UTIL.

BIT. SHLDR.

8TH ST. RD.

+65.31, 8TH ST. RD. (BIT.)

BIT. SHLDR.

STA. 44+50.00

STA. 50+50.00

EXIST. CURVE ETAINTR-1  
 PI STA. = 39+55.33  
 $\Delta = 89^\circ 24' 20''$  (RT)  
 $D = 5^\circ 31' 24''$   
 $R = 1,037.35'$   
 $T = 1,026.64'$   
 $L = 1,618.70'$   
 $E = 422.13'$   
 $S.E. = 0.057\%$   
 S.E.A. STA. 28+28.69 - 29+78.69  
           STA. 44+97.30 - 46+47.30  
 P.C. STA. = 29+28.69  
 P.T. STA. = 45+47.39

FLAG  
POLE

WATER

WATER

GATE 7  
ILLINOIS STATE FAIRGROUNDS +65.31, C.E. (BIT.)  
ILLINOIS DEPT. OF NATURAL RESOURCES

REVISIONS	
NAME	DATE

ILLINOIS DEPARTMENT OF TRANSPORTATION

PLAN SHEET

FAU 8027 (TAINTOR RD.)  
SECTION 12RS-4,TS-1  
SANGAMON COUNTY

SCALE: VERT.  
HORIZ.  
DATE 02-14-05

DRAWN BY TMJ  
CHECKED BY MEB

PLOT DATE = 4/7/2005  
 FILE NAME = c:\projects\72985\72985.dgn  
 PLOT SCALE = 43.3724 / IN.  
 REFERENCE = NWF#