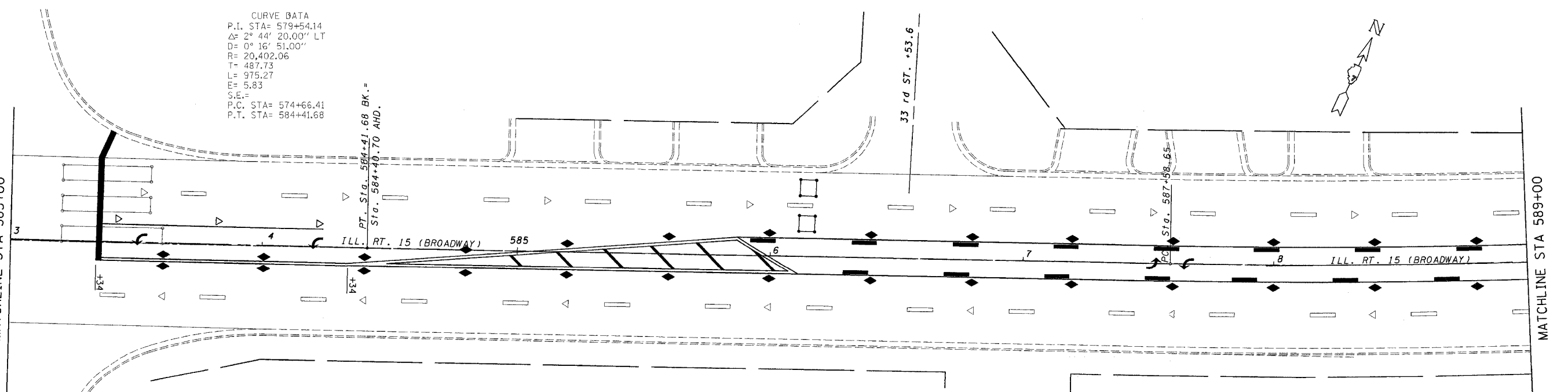
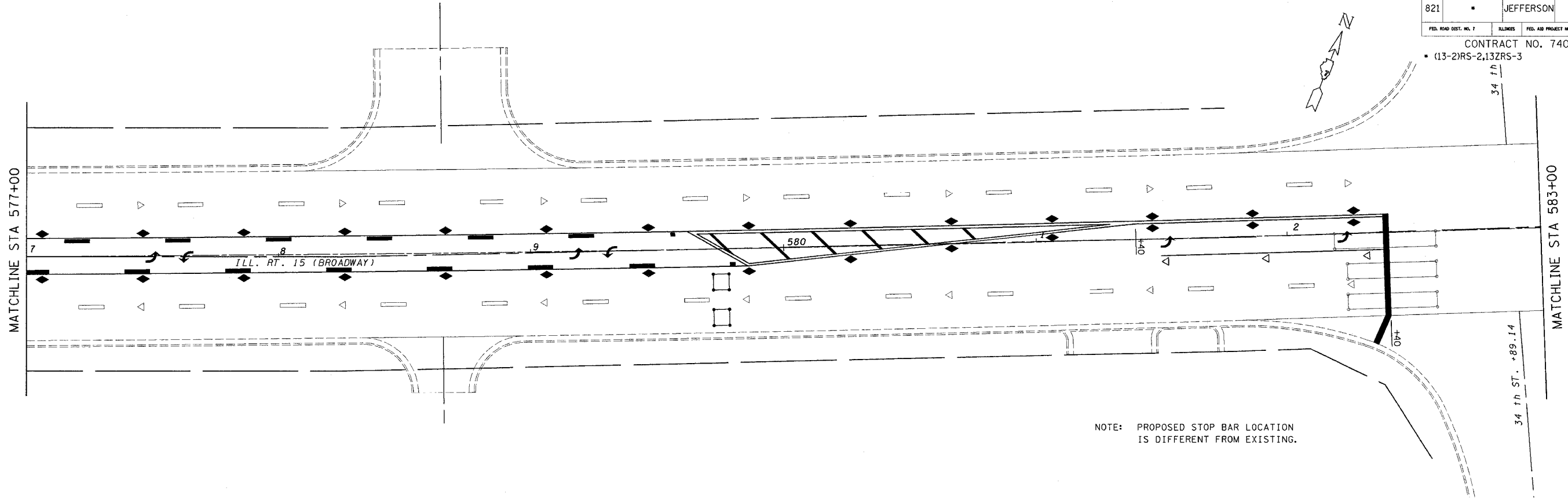


steffenmk
 10/26/2004
 c:\projects\74048d\02904pa.dgn

FAP NO.	SECTION	COUNTY	TOTAL SHEETS	SHEET NO.
821	*	JEFFERSON	11	8
FED. ROAD DIST. NO. 7		ILLINOIS	FED. AID PROJECT NO.	

CONTRACT NO. 74048
 (13-2)RS-2,13ZRS-3



CURVE DATA
 P.I. STA= 579+54.14
 $\Delta = 2^{\circ} 44' 20.00''$ LT
 $D = 0^{\circ} 16' 51.00''$
 $R = 20,402.06$
 $T = 487.73$
 $L = 975.27$
 $E = 5.83$
 $S.E. =$
 $P.C. STA = 574+66.41$
 $P.T. STA = 584+41.68$

REVISIONS	
NAME	DATE

ILLINOIS DEPARTMENT OF TRANSPORTATION

**STA. 577 + 00
 TO
 STA. 589 + 00**

SCALE: VERT. _____
 HORIZ. _____

DATE _____

DRAWN BY _____
 CHECKED BY _____