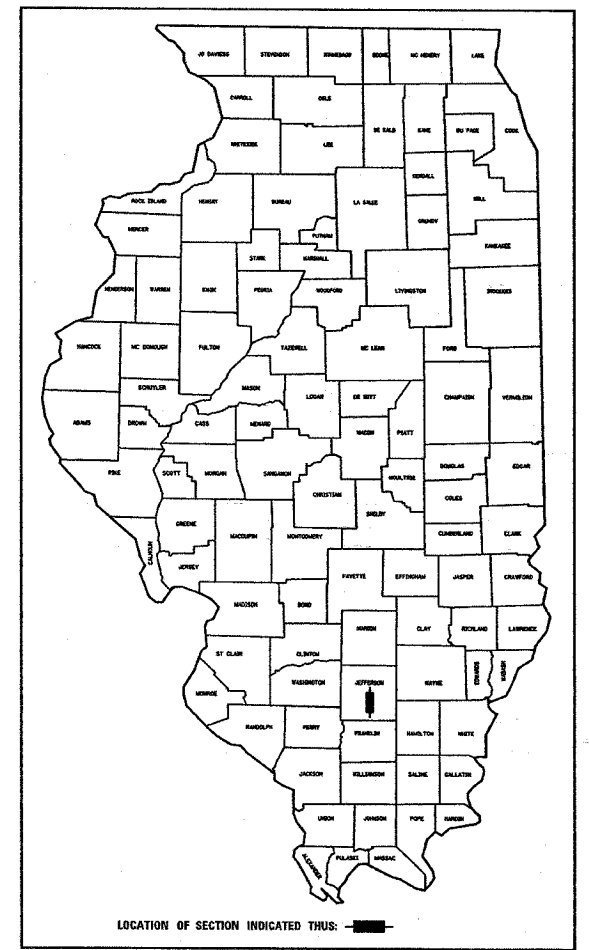


74059

| FAS<br>ATEL           | SECTION    | COUNTY    | TOTAL<br>SHEETS      | SHEET<br>NO. |
|-----------------------|------------|-----------|----------------------|--------------|
| 8736                  | (110) RS-4 | JEFFERSON | 15                   | 1            |
| FED. ROAD DIST. NO. 7 |            | ILLINOIS  | FED. AID PROJECT NO. |              |

STATE OF ILLINOIS  
DEPARTMENT OF TRANSPORTATION  
DIVISION OF HIGHWAYS  
**PLANS FOR PROPOSED  
FEDERAL HIGHWAY PROJECT**

D-97-039-04



LOCATION OF SECTION INDICATED THUS: [Symbol]

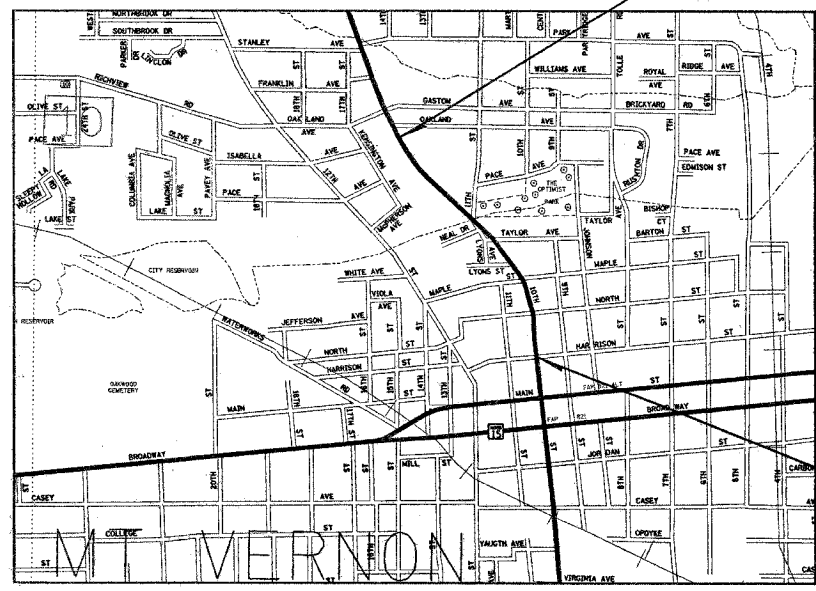
FAU ROUTE 8736 (IL 37)  
**PROJ: M-0736(005)**  
SECTION (110) RS-4  
JEFFERSON COUNTY  
BITUMINOUS RESURFACING

STATION EQUATIONS

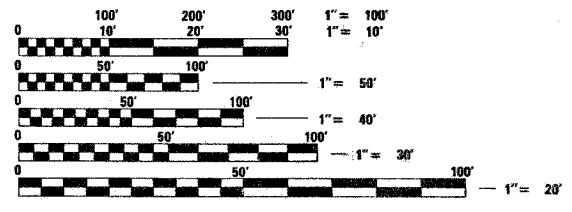
STA. 1128+61.02 (BK) = STA. 5+20.20 (AH)  
STA. 19+78.47 (BK) = STA. 20+25.83 (AH)  
STA. 25+69.44 (BK) = STA. 26+04.80 (AH)

C-97-077-04

PROJECT BEGINS  
STA. 1126+89



PROJECT ENDS  
STA. 31+84



FULL SIZE PLANS HAVE BEEN PREPARED USING STANDARD  
ENGINEERING SCALES, REDUCED SIZED PLANS WILL NOT  
CONFORM TO STANDARD SCALES, IN MAKING MEASUREMENTS  
ON REDUCED PLANS, THE ABOVE SCALES MAY BE USED.

J.U.L.I.E.  
JOINT UTILITY LOCATION INFORMATION FOR EXCAVATION  
1-800-892-0123

CONTRACT NO. 74059

ADT (2003) - 8600

GROSS LENGTH = 2753  
NET LENGTH = 2753

FEET = 0.52 MILES  
FEET = 0.52 MILES

SEAL

PRINTED BY THE AUTHORITY OF  
THE STATE OF ILLINOIS

STATE OF ILLINOIS  
DEPARTMENT OF TRANSPORTATION  
DIVISION OF HIGHWAYS

SUBMITTED April 1, 2005  
Christine M. Doolittle  
DISTRICT ENGINEER

\_\_\_\_\_  
20

ENGINEER OF PROJECT DEVELOPMENT AND IMPLEMENTATION  
May 13, 2005  
Mike Nene  
ENGINEER OF DESIGN AND ENVIRONMENT

\_\_\_\_\_  
May 13, 2005  
Victor Madors  
DIRECTOR, DIVISION OF HIGHWAYS

PROJECT ENGINEER : MARK DAUGHERTY  
SQUAD LEADER :  
DESIGNER : MATT HIRTZEL  
TELEPHONE : 217/342-3951 EX 343  
4/1/2005  
ct\projects\74059\03904pa.dgn  
CS

teasleyck  
4/1/2005  
c:\projects\74059d\03904pa.dgn  
GN & I

| FAS<br>SYL            | SECTION    | COUNTY    | TOTAL<br>SHEETS      | SHEET<br>NO. |
|-----------------------|------------|-----------|----------------------|--------------|
| 8736                  | (110) RS-4 | JEFFERSON |                      | 2            |
| FED. ROAD DIST. NO. 7 |            | ILLINOIS  | FED. AID PROJECT NO. |              |

CONTRACT NO. 74059

GENERAL NOTES

THIS SECTION SHALL BE CONSTRUCTED IN ACCORDANCE WITH THE PLANS, THE "STANDARD SPECIFICATIONS FOR ROAD AND BRIDGE CONSTRUCTION", ADOPTED JANUARY 1, 2002, THE "SUPPLEMENTAL SPECIFICATIONS AND RECURRING SPECIAL PROVISIONS" INDICATED ON THE CHECK SHEET, AND "THE SPECIAL PROVISIONS" INCLUDED IN THE PROPOSAL.

THE WORK INCLUDED IN THIS SECTION (110) RS-4 CONSISTS OF MILLING, SURFACE COURSE, PAVEMENT MARKING AND ANY OTHER INCIDENTAL WORK NECESSARY TO COMPLETE THE SECTION.

THE CONTRACTOR WILL PROVIDE INTERNET ACCESSIBILITY TO THE BITUMINOUS PLANT QUALITY CONTROL LAB SO THAT REPORTS CAN BE E-MAILED TO THE DISTRICT HEADQUARTERS. THIS WORK SHALL BE INCLUDED IN THE COST OF ALL BITUMINOUS ITEMS.

FOR THE PAY ITEM BITUMINOUS MATERIALS (PRIME COAT), THE CONTRACTOR SHALL USE EITHER RC-70 OR SS-1HP.

A BITUMINOUS WEDGE SHALL BE PLACED AROUND ALL MANHOLES AND VALVE BOXES AFTER BITUMINOUS SURFACE REMOVAL. THE COST SHALL BE INCLUDED WITH THE COST OF THE BITUMINOUS SURFACE REMOVAL 1 1/2".

THE ACTUAL LOCATIONS OF PAVEMENT PATCHING SHALL BE DETERMINED BY THE ENGINEER IN THE FIELD.

SHORT TERM PAVEMENT MARKINGS ON MILLED SURFACES SHALL BE PAINT. ALL OTHER SHORT TERM PAVEMENT MARKINGS SHALL BE TAPE.

VIBRATORY ROLLERS WILL NOT BE ALLOWED. DENSITY REQUIREMENTS SHALL REMAIN AS SPECIFIED.

THE FOLLOWING BITUMINOUS CONCRETE MIXTURE REQUIREMENTS ARE APPLICABLE TO THIS PROJECT.

MIXTURE USE(S): BITUMINOUS CONCRETE SURFACE COURSE,  
SUPERPAVE MIX "D" N70

AC/PG: PG 64-22  
RAP %: 15%  
DESIGN AIR VOIDS: 4.0% @ NDESIGN=70  
MIXTURE COMPOSITION: IL-9.5  
FRICTION AGGREGATE: MIXTURE D

INDEX OF SHEETS

| SHEET NO. | DESCRIPTION                     |
|-----------|---------------------------------|
| 1         | COVER SHEET                     |
| 2         | GENERAL NOTES & INDEX OF SHEETS |
| 3         | SUMMARY OF QUANTITIES           |
| 4         | TYPICAL SECTIONS & DETAILS      |
| 5-5A      | PAVEMENT MARKING DETAILS        |
| 6         | SCHEDULES                       |
| 7-8       | TIES                            |
| 9-14      | PLAN SHEETS<br>STANDARDS        |

THE FOLLOWING STANDARDS ARE A PART OF THESE PLANS AND ARE INCLUDED AFTER THE PLAN SHEETS

| STD. NO.  | DESCRIPTION   |
|-----------|---|
| 000001-04 | STANDARD SYMBOLS, ABBREVIATIONS, PATTERNS                                 |
| 001006    | DECIMAL OF AN INCH AND OF A FOOT  |
| 442201-01 | CLASS C AND D PATCHES   |
| 701301-02 | LANE CLOSURE 2L, 2W SHORT TIME OPERATIONS                                 |
| 701311-02 | LANE CLOSURE 2L, 2W MOVING OPERATIONS - DAY ONLY                          |
| 701006-02 | OFF-RD OPERATIONS, 2L, 2W, 4.5 m (15') TO 600 mm (24") FROM PAVEMENT EDGE |
| 701501-03 | URBAN LANE CLOSURE 2L, 2W UNDIVIDED                                       |
| 702001-05 | TRAFFIC CONTROL DEVICES   |
| 780001-01 | TYPICAL PAVEMENT MARKINGS   |
| 781001-02 | TYPICAL APPLICATIONS RAISED REFLECTIVE PAVEMENT MARKERS                   |

| REVISIONS |      |
|-----------|------|
| NAME      | DATE |
|           |      |
|           |      |
|           |      |
|           |      |
|           |      |
|           |      |
|           |      |
|           |      |
|           |      |
|           |      |

ILLINOIS DEPARTMENT OF TRANSPORTATION  
**GENERAL NOTES  
&  
INDEX OF SHEETS**

SCALE: VERT.  
HORIZ.  
DATE

DRAWN BY  
CHECKED BY

teesleyck  
4/1/2005  
c:\projects\74059d\03904pa.dgn  
SOQ

|                       |            |           |                      |              |
|-----------------------|------------|-----------|----------------------|--------------|
| FAS<br>NO.            | SECTION    | COUNTY    | TOTAL<br>SHEETS      | SHEET<br>NO. |
| 8736                  | (110) RS-4 | JEFFERSON |                      | 3            |
| FED. ROAD DIST. NO. 7 |            | BLINDS    | FED. AID PROJECT NO. |              |

| SUMMARY OF QUANTITIES |  |        | CONSTRUCTION TYPE CODE       |                               |                               |
|-----------------------|--|--------|------------------------------|-------------------------------|-------------------------------|
| CODE NO               | ITEM   | UNIT   | URBAN<br>TOTAL<br>QUANTITIES | CONSTRUCTION TYPE CODE        |                               |
|                       |  |        |                              | 1000<br>80% FED.<br>20% STATE | Y025<br>STATE/CITY<br>50%/50% |
| 40600100              | BITUMINOUS MATERIALS (PRIME COAT)                              | GALLON | 1106                         | 864                           | 242                           |
| 40600300              | AGGREGATE (PRIME COAT)   | TON    | 21                           | 17                            | 4                             |
| 40600895              | CONSTRUCTING TEST STRIP  | EACH   | 1                            | 1                             |                               |
| 40600990              | TEMPORARY RAMP   | SQ YD  | 59                           | 59                            |                               |
| 44000006              | BITUMINOUS SURFACE REMOVAL 1 1/2"                              | SQ YD  | 11059                        | 8641                          | 2418                          |
| 44201811              | CLASS D PATCHES, TYPE I, 14 INCH                               | SQ YD  | 21                           | 21                            |                               |
| 44201815              | CLASS D PATCHES, TYPE II, 14 INCH                              | SQ YD  | 73                           | 73                            |                               |
| 66700205              | PERMANENT SURVEY MARKERS, TYPE I                               | EACH   | 17                           | 17                            |                               |
| 67000500              | ENGINEER'S FIELD OFFICE, TYPE B                                | CAL MO | 3                            | 3                             |                               |
| 67100100              | MOBILIZATION   | L SUM  | 1                            | 1                             |                               |
| 70102620              | TRAFFIC CONTROL AND PROTECTION,<br>STANDARD 701501             | L SUM  | 1                            | 1                             |                               |
| 70300100              | SHORT-TERM PAVEMENT MARKING                                    | FOOT   | 550                          | 550                           |                               |
| 70301000              | WORK ZONE PAVEMENT MARKING REMOVAL                             | SQ FT  | 92                           | 92                            |                               |
| 78000100              | THERMOPLASTIC PAVEMENT MARKING<br>- LETTERS AND SYMBOLS        | SQ FT  | 104                          | 104                           |                               |
| * 78000200            | THERMOPLASTIC PAVEMENT MARKING<br>- LINE 4"                    | FOOT   | 1088                         | 1088                          |                               |
| * 78000400            | THERMOPLASTIC PAVEMENT MARKING<br>- LINE 6"                    | FOOT   | 1176                         | 1176                          |                               |
| * 78000650            | THERMOPLASTIC PAVEMENT MARKING<br>- LINE 24"                   | FOOT   | 45                           | 45                            |                               |
| * 78100100            | RAISED REFLECTIVE PAVEMENT MARKER                              | EACH   | 61                           | 61                            |                               |
| X4066426              | BITUMINOUS CONCRETE SURFACE COURSE,<br>SUPERPAVE, MIX "D", N70 | TON    | 930                          | 726                           | 204                           |

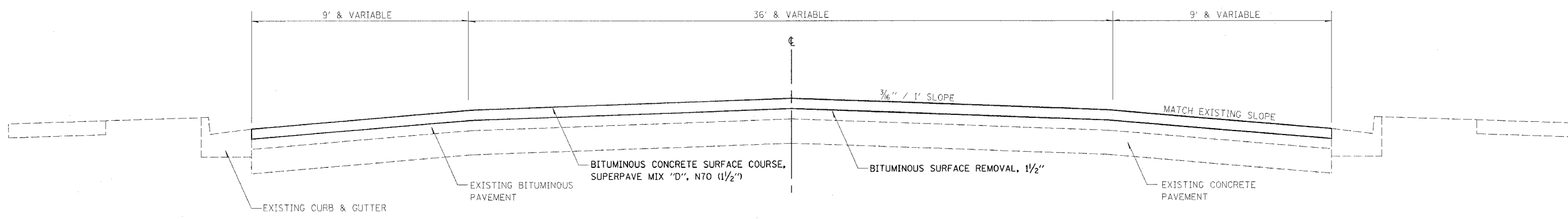
\*SPECIALTY ITEMS

| REVISIONS |      |
|-----------|------|
| NAME      | DATE |
|           |      |
|           |      |
|           |      |
|           |      |
|           |      |
|           |      |
|           |      |
|           |      |
|           |      |
|           |      |

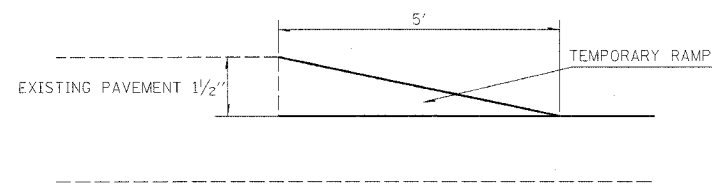
ILLINOIS DEPARTMENT OF TRANSPORTATION  
**SUMMARY OF QUANTITIES**  
SCALE: VERT. DATE  
DRAWN BY CHECKED BY

teesleyck  
4/1/2005  
c:\projects\74059d\03904pa.dgn  
TYP

|                       |                       |                      |                    |                   |
|-----------------------|-----------------------|----------------------|--------------------|-------------------|
| FAS<br>8736           | SECTION<br>(110) RS-4 | COUNTY<br>JEFFERSON  | TOTAL<br>SHEETS    | SHEET<br>NO.<br>4 |
| FED. ROAD DIST. NO. 1 | ILLINOIS              | FED. AID PROJECT NO. | CONTRACT NO. 74059 |                   |



PROPOSED  
STA 1126+86 TO STA 31+84



TEMPORARY RAMP DETAIL  
 STA 1126+89 TO STA 1126+94 = 20 SQ YD  
 STA 31+79 TO STA 31+84 = 39 SQ YD  
 TOTAL = 59 SQ YD

| REVISIONS |      |
|-----------|------|
| NAME      | DATE |
|           |      |
|           |      |
|           |      |
|           |      |
|           |      |
|           |      |
|           |      |
|           |      |
|           |      |
|           |      |

ILLINOIS DEPARTMENT OF TRANSPORTATION

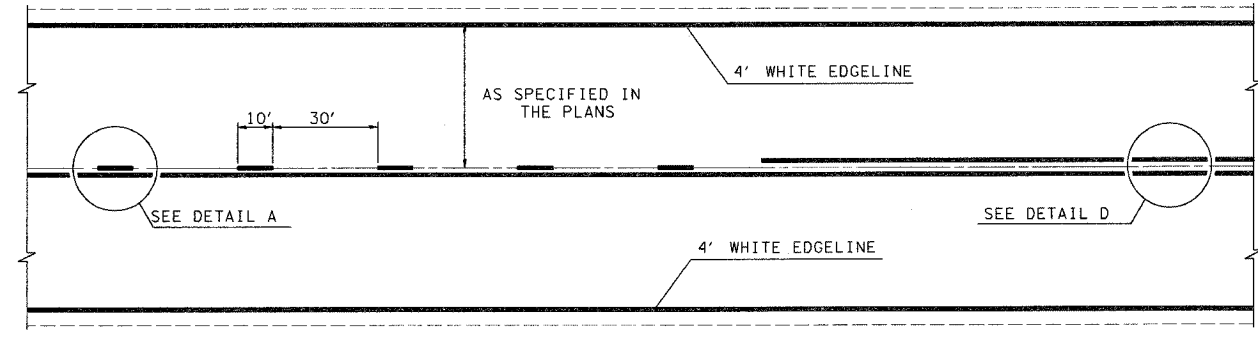
**TYPICAL SECTIONS**

SCALE: VERT.      DRAWN BY  
 HORIZ.              CHECKED BY  
 DATE

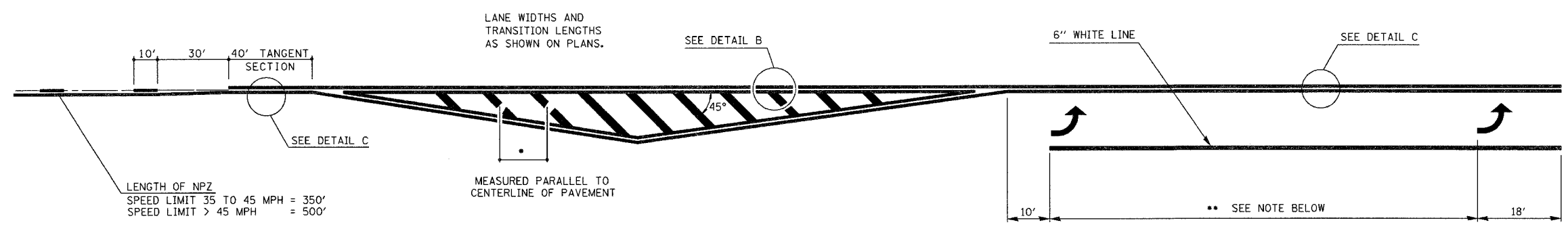
1 2 3 4 5 6 7 8 9 4/1/2005  
 10 11 12 13 14 15 16 17 18  
 19 20 21 22 23 24 25 26 27  
 28 29 30 31 32 33 34 35 36  
 37 38 39 40 41 42 43 44 45  
 46 47 48 49 50 51 52 53  
 54 55 56 57 58 59 60 61 62 63

c:\projects\74059d\03904pa.dgn  
 tedslvck "4" DATE

|                       |                       |                     |                      |                   |
|-----------------------|-----------------------|---------------------|----------------------|-------------------|
| FAS<br>8736           | SECTION<br>(110) RS-4 | COUNTY<br>JEFFERSON | TOTAL<br>SHEETS      | SHEET<br>NO.<br>5 |
| FED. ROAD DIST. NO. 7 |                       | ILLINOIS            | FED. AID PROJECT NO. |                   |
| CONTRACT NO. 74059    |                       |                     |                      |                   |



TYPICAL CENTERLINE, NO PASSING ZONE LINE (NPZ) & EDGELINE MARKINGS  
 2-LANE PAVEMENT



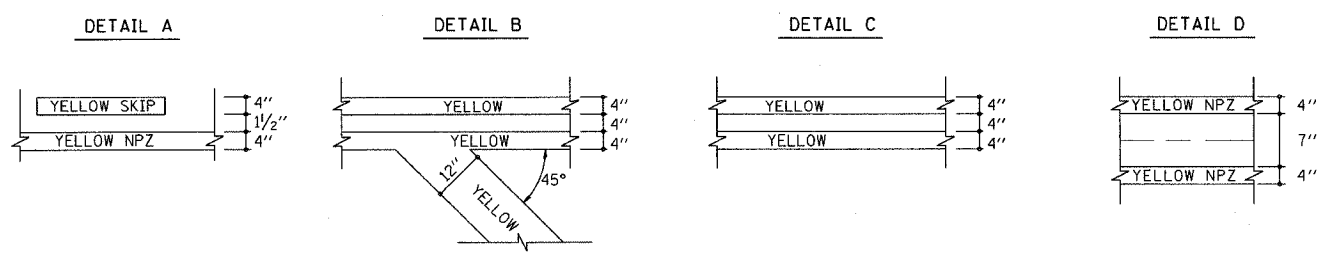
LENGTH OF NPZ  
 SPEED LIMIT 35 TO 45 MPH = 350'  
 SPEED LIMIT > 45 MPH = 500'

•DIAGONAL SPACING

|             |              |       |
|-------------|--------------|-------|
| SPEED LIMIT | < 30 MPH     | = 15' |
| SPEED LIMIT | 30 TO 45 MPH | = 20' |
| SPEED LIMIT | > 45 MPH     | = 30' |

\*\* PLACE THE FIRST ARROW EVEN WITH THE BEGINNING OF THE TURN BAY.  
 PLACE ANOTHER ARROW 18' BACK FROM THE STOP BAR, IF REQUIRED,  
 ADD ADDITIONAL ARROWS TO MAINTAIN A MAXIMUM OF 80' SPACING.

- NOTES:
1. OMIT EDGELINE THRU SIDE ROADS.
  2. TAPER RATES, LANE WIDTHS, AND STORAGE LENGTHS AS SHOWN ON THE PLANS.
  3. WHEN MEDIANS ARE PRESENT, PLACE A SINGLE YELLOW STRIPE AROUND ITS PERIMETER.



NOT TO SCALE

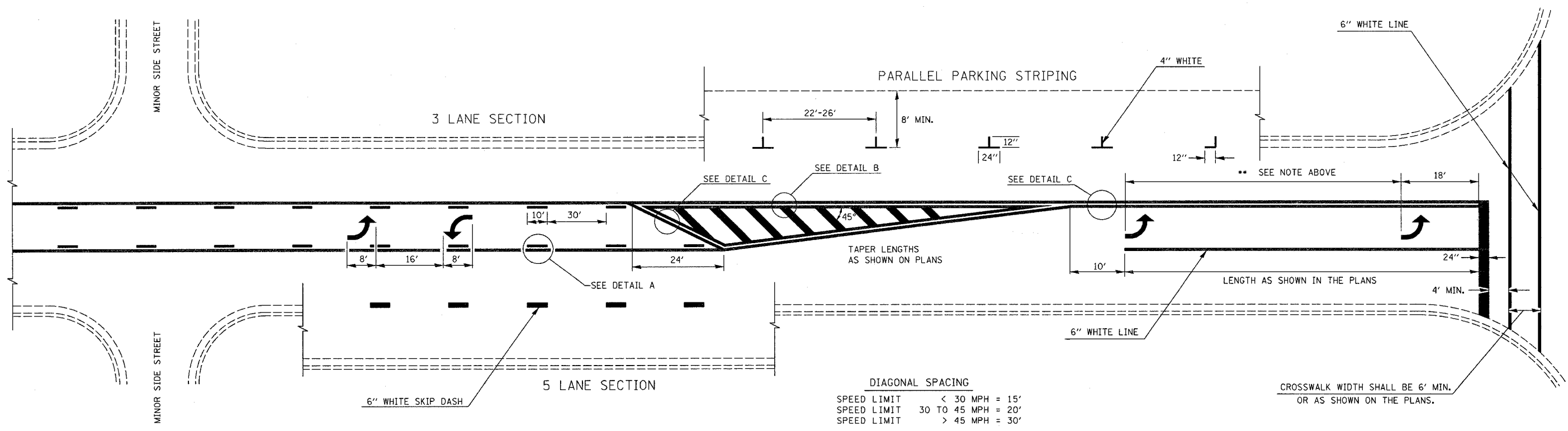
| REVISIONS |       |
|-----------|-------|
| NAME      | DATE  |
| MMO       | 12-99 |
| DRM       | 08-04 |
|           |       |
|           |       |
|           |       |
|           |       |
|           |       |
|           |       |
|           |       |

ILLINOIS DEPARTMENT OF TRANSPORTATION  
**TYPICAL APPLICATION OF PAVEMENT MARKINGS**  
**SHEET 1 OF 2**  
 SCALE: VERT. HORIZ.  
 DATE ISSUED: 05-06-96 DRAWN BY CHECKED BY

4/1/2005  
 c:\projects\74059d\03904pa.dgn  
 MMO REV: 05-06-96  
 EPMD1

|                       |            |                      |                 |              |
|-----------------------|------------|----------------------|-----------------|--------------|
| FAS<br>ATE            | SECTION    | COUNTY               | TOTAL<br>SHEETS | SHEET<br>NO. |
| 8736                  | (110) RS-4 | JEFFERSON            |                 | 5A           |
| FED. ROAD DIST. NO. 7 | ILLINOIS   | FED. AID PROJECT NO. |                 |              |
| CONTRACT NO. 74059    |            |                      |                 |              |

\*\* PLACE THE FIRST ARROW EVEN WITH THE BEGINNING OF THE TURN BAY.  
 PLACE ANOTHER ARROW 18' BACK FROM THE STOP BAR, IF REQUIRED,  
 ADD ADDITIONAL ARROWS TO MAINTAIN A MAXIMUM OF 80' SPACING.



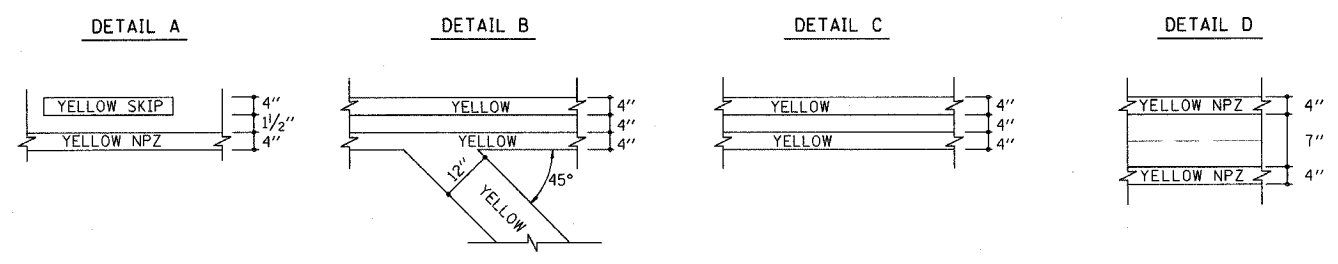
DIAGONAL SPACING

|             |              |       |
|-------------|--------------|-------|
| SPEED LIMIT | < 30 MPH     | = 15' |
| SPEED LIMIT | 30 TO 45 MPH | = 20' |
| SPEED LIMIT | > 45 MPH     | = 30' |

CROSSWALK WIDTH SHALL BE 6' MIN.  
 OR AS SHOWN ON THE PLANS.

**TYPICAL BI-DIRECTIONAL TURN LANE MARKINGS**  
 (SHOWING TRANSITION TO EXCLUSIVE LEFT TURN LANE)

- NOTES:
- NO LESS THAN 2 ARROWS SHALL BE USED.
  - TAPER RATES, LANE WIDTHS, AND STORAGE LENGTHS AS SHOWN ON THE PLANS.
  - AVOID PLACING BI-DIRECTIONAL ARROWS IN INTERSECTIONS.
  - BI-DIRECTIONAL ARROWS SHALL BE SPACED A MAXIMUM OF 250'.



NOT TO SCALE

| REVISIONS |       |
|-----------|-------|
| NAME      | DATE  |
| MMO       | 12-99 |
| DRM       | 08-04 |
|           |       |
|           |       |
|           |       |
|           |       |
|           |       |
|           |       |
|           |       |

ILLINOIS DEPARTMENT OF TRANSPORTATION  
**TYPICAL APPLICATION OF  
 PAVEMENT MARKINGS**  
**SHEET 2 OF 2**

SCALE: VERT. \_\_\_\_\_  
 HORIZ. \_\_\_\_\_  
 DATE \_\_\_\_\_  
 DRAWN BY \_\_\_\_\_  
 CHECKED BY \_\_\_\_\_

c:\projects\74059d\03904pa.dgn  
 fedsleyck\4-DAT

teesleyck  
4/1/2005  
c:\projects\74059d\03904pa.dgn

|                       |                       |                      |                 |                    |
|-----------------------|-----------------------|----------------------|-----------------|--------------------|
| FAS<br>8736           | SECTION<br>(110) RS-4 | COUNTY<br>JEFFERSON  | TOTAL<br>SHEETS | SHEET<br>NO.<br>Lp |
| FED. ROAD DIST. NO. 7 | ILLINOIS              | FED. AID PROJECT NO. |                 |                    |

CONTRACT NO. 74059

PAVING CALCULATIONS

| STATION TO STATION  | BEGIN LANE WIDTH | END LANE WIDTH | AVG LANE WIDTH | LENGTH   | STATE PAY WIDTH | STATE PAY (sf) | STATE/CITY PAY WIDTH | STATE/CITY PAY (sf) |
|---|------------------|----------------|----------------|----------|-----------------|----------------|----------------------|---------------------|
| 1126+89 1128+45   | 35.7             | 35.2           | 35.45          | 156      | ALL             | 5530.2         | 0.0                  | 0.0                 |
| 1128+45 1128+61.02  | 35.2             | 35.4           | 35.3           | 16.02    | 22              | 352.4          | 13.3                 | 213.1               |
| STA EQ 1128+61.02 5+20.20                                 |                  |                |                |          |                 |                |                      |                     |
| 5+20.20 14+61.72  | 35.4             | 35.5           | 35.45          | 941.52   | 22              | 20713.4        | 13.5                 | 12663.4             |
| 11th Street (2 locations)                                 |                  |                |                |          |                 | 1057.6         |                      |                     |
| Lyons Court   |                  |                |                |          |                 | 794.7          |                      |                     |
| Taylor Avenue (left)                                      |                  |                |                |          |                 | 326.7          |                      |                     |
| Taylor Avenue (right)                                     |                  |                |                |          |                 | 413.6          |                      |                     |
| 14+61.72 19+78.47   | 35.5             | 32.2           | 33.85          | 516.75   | ALL             | 17492.0        | 0.0                  | 0.0                 |
| STA EQ 19+78.47 20+25.83                                  |                  |                |                |          |                 |                |                      |                     |
| 20+25.83 21+00.00   | 32.2             | 27.7           | 29.95          | 74.17    | ALL             | 2221.4         | 0.0                  | 0.0                 |
| 21+00.00 23+21.03   | 27.7             | 27.1           | 27.4           | 221.03   | ALL             | 6056.2         | 0.0                  | 0.0                 |
| Maple Street (left - 2 locations)                         |                  |                |                |          |                 | 1813.4         |                      |                     |
| Maple Street (right)                                      |                  |                |                |          |                 | 362.3          |                      |                     |
| 23+21.03 25+69.44   | 27.1             | 36.6           | 31.85          | 248.41   | 22              | 5465.0         | 9.9                  | 2446.8              |
| STA EQ 25+69.44 26+04.80                                  |                  |                |                |          |                 |                |                      |                     |
| 26+04.80 29+00.00   | 36.6             | 35.4           | 36             | 295.2    | 22              | 6494.4         | 14.0                 | 4132.8              |
| North Street (left)                                       |                  |                |                |          |                 | 423.7          |                      |                     |
| North Street (right)                                      |                  |                |                |          |                 | 406.8          |                      |                     |
| 29+00.00 30+69.00   | 35.4             | 35.8           | 35.6           | 169      | 22              | 3718.0         | 13.6                 | 2298.4              |
| 30+69.00 31+84.00   | 35.8             | 35.9           | 35.85          | 115      | ALL             | 4122.8         | 0.0                  | 0.0                 |
|   |                  |                |                |          | 100% STATE      | 77764.7        | 50/50 % STATE/CITY   | 21754.5             |
| BITUMINOUS SURFACE REMOVAL 1 1/2                          |                  |                |                | 44000006 | SO YD           | 8641           | 2418                 |                     |
| TOTAL BITUMINOUS MATERIALS (PRIME COAT)                   |                  |                |                | 40600100 | GAL             | 864            | 242                  |                     |
| TOTAL AGGREGATE (PRIME COAT)                              |                  |                |                | 40600300 | TON             | 17             | 4                    |                     |
| BITUMINOUS CONCRETE SURFACE COURSE, SUPERPAVE MIX "D" N90 |                  |                |                | X4066428 | TON             | 726            | 204                  |                     |

78000200 THERMOPLASTIC PAVEMENT MARKING - LINE 4"

| CENTERLINE DASHED STRIPING                 | FT     | STRIPING 10FT/40FT |
|--|--------|--------------------|
| STA 1126+89.00 TO STA 1128+61.02           | 172.0  | 43 ft              |
| STA EQ 1128+61.02 BK = 5+20.20 AH          |        |                    |
| STA 5+20.20 TO STA 19+78.47                | 1458.3 | 365 ft             |
| STA EQ 19+78.47 BK = 20+25.83 AH           |        |                    |
| STA 20+25.83 TO STA 25+69.44               | 543.6  | 136 ft             |
| STA EQ 25+69.44 BK = 26+04.80 AH           |        |                    |
| STA 26+04.80 TO STA 31+84.00               | 579.2  | 145 ft             |
| SOLID LANE STRIPING                        |        |                    |
| STA. 29+65.00 TO STA. 31+65.00 (2 STRIPES) |        | 400                |
| TOTAL                                      |        | 1088               |

78000400 THERMOPLASTIC PAVMENT MARKING - LINE 6"

| SOLID LANE STRIPING              | FT   |
|----------------------------------|------|
| STA 15+90.00 TO STA 18+38.00     | 248  |
| STA 19+11.00 TO STA 19+78.47     | 68   |
| STA EQ 19+78.47 BK = 20+25.83 AH |      |
| STA 20+25.83 TO STA 23+24.00     | 298  |
| STA 23+83.00 TO STA 25+69.44     | 186  |
| STA EQ 25+69.44 BK = 26+04.80 AH |      |
| STA 26+04.80 TO STA 27+06.00     | 101  |
| STA 30+65.00 TO STA. 31+65.00    | 100  |
| CROSSWALKS                       |      |
| NORTH STREET (TWO STRIPES)       | 85   |
| HARRISON (TWO STRIPES)           | 90   |
| TOTAL                            | 1176 |

PAVEMENT MARKING

| STA. TO STA.                      | LENGTH | 70300100<br>2 APPLICATIONS<br>SHORT TERM<br>PAVEMENT MARKING | 70301000<br>WORK ZONE<br>PAVEMENT MARKING<br>REMOVAL |
|-----------------------------------|--------|--|--|
| STA 1126+89.00 TO STA 1128+61.02  | 172.0  | 34   | 6  |
| STA EQ 1128+61.02 BK = 5+20.20 AH |        |  |  |
| STA 5+20.20 TO STA 19+78.47       | 1458.3 | 292  | 49   |
| STA EQ 19+78.47 BK = 20+25.83 AH  |        |  |  |
| STA 20+25.83 TO STA 25+69.44      | 543.6  | 108  | 18   |
| STA EQ 25+69.44 BK = 26+04.80 AH  |        |  |  |
| STA 26+04.80 TO STA 31+84.00      | 579.2  | 116  | 19   |
| TOTAL                             |        | 550 FT   | 92 SQ FT   |

| REVISIONS |      |
|-----------|------|
| NAME      | DATE |
|           |      |
|           |      |
|           |      |
|           |      |
|           |      |
|           |      |
|           |      |
|           |      |
|           |      |
|           |      |

ILLINOIS DEPARTMENT OF TRANSPORTATION

SCHEDULES

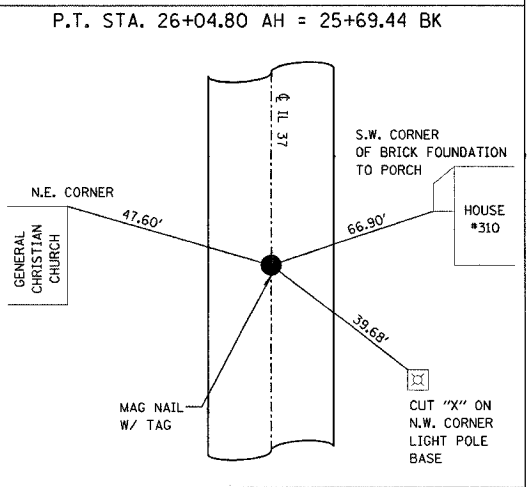
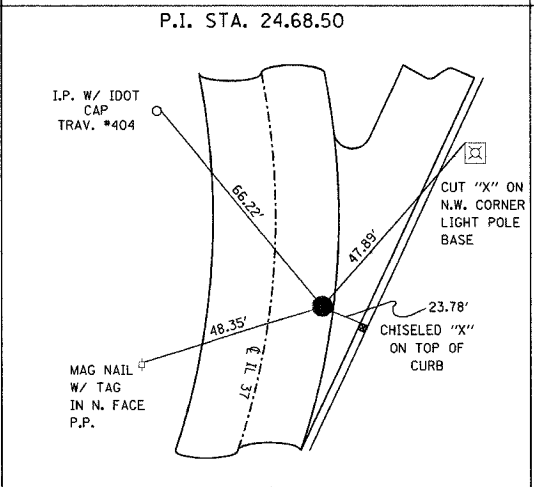
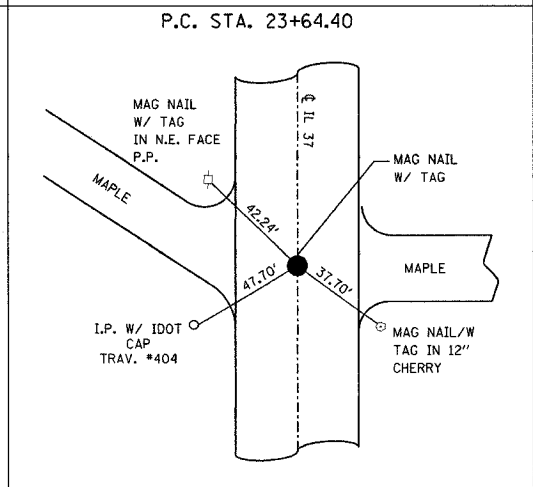
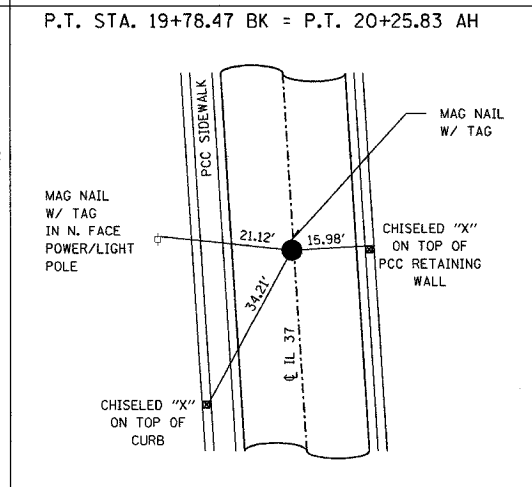
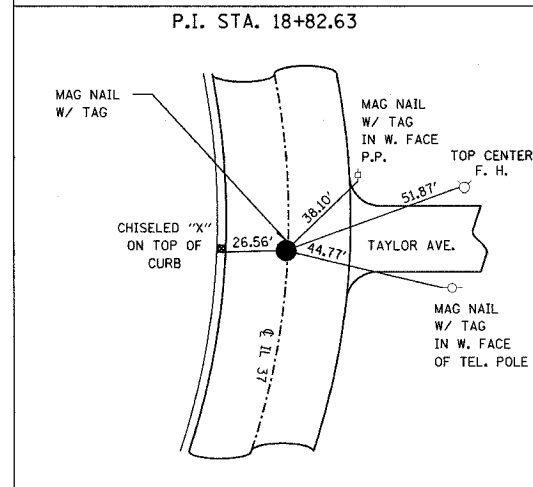
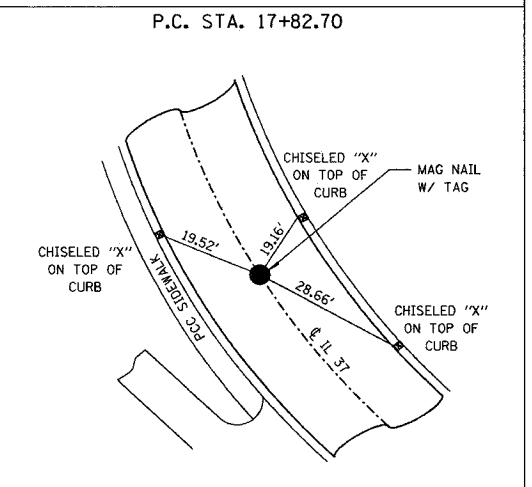
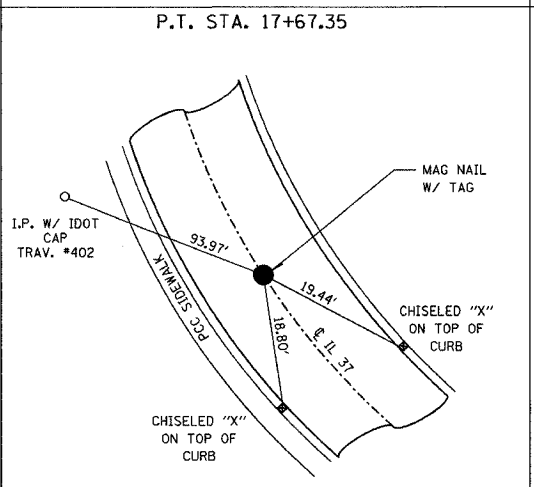
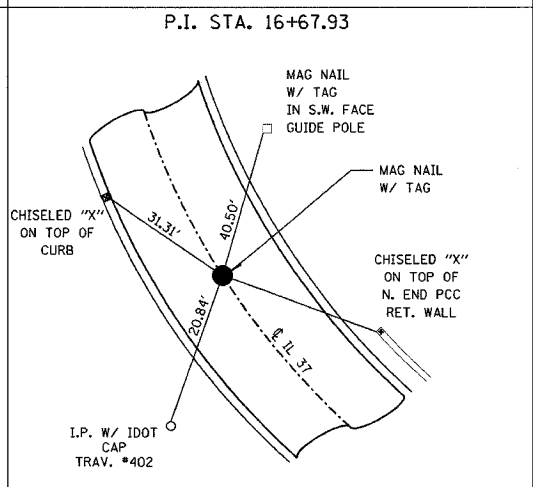
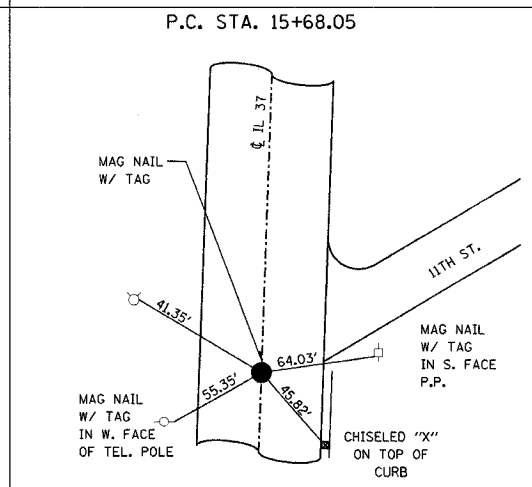
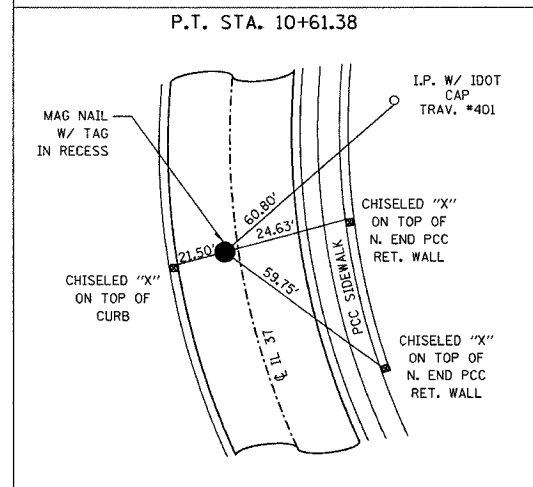
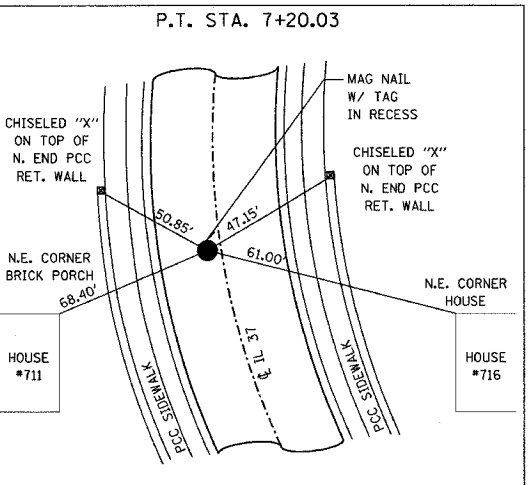
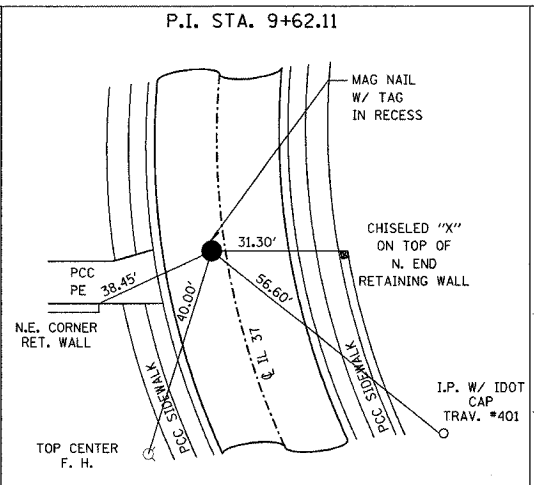
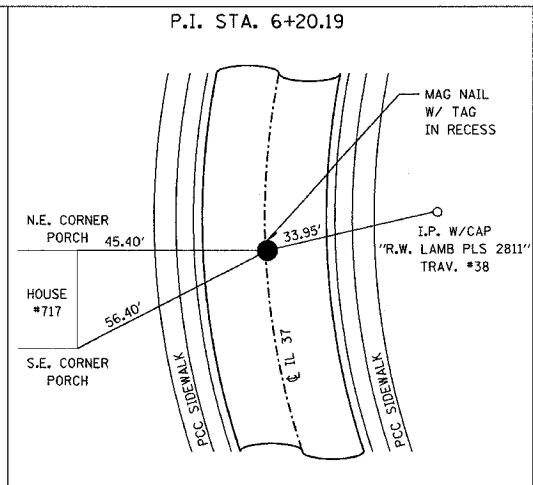
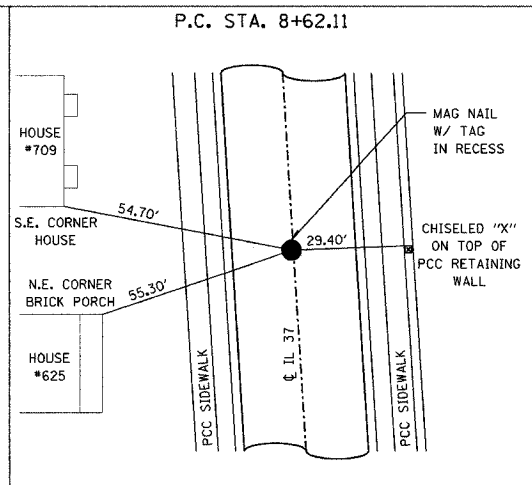
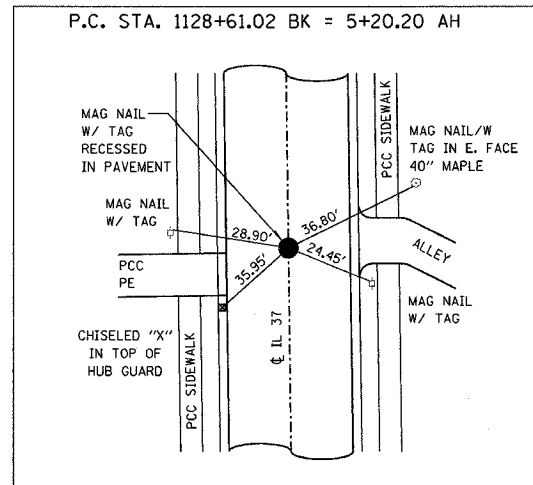
SCALE: VERT.  
HORIZ.  
DATE

DRAWN BY  
CHECKED BY

teesleyck  
4/1/2005  
c:\projects\74059\d03904\pa.dgn

TIES

|                       |                     |                     |                      |                   |
|-----------------------|---------------------|---------------------|----------------------|-------------------|
| FAS<br>#7             | SECTION<br>110 RS-4 | COUNTY<br>JEFFERSON | TOTAL<br>SHEETS<br>7 | SHEET<br>NO.<br>7 |
| FED. ROAD DIST. NO. 7 |                     | ILLINOIS            | FED. AID PROJECT NO. |                   |
| CONTRACT NO. 74059    |                     |                     |                      |                   |



| REVISIONS |      |
|-----------|------|
| NAME      | DATE |
|           |      |
|           |      |
|           |      |
|           |      |
|           |      |
|           |      |
|           |      |
|           |      |
|           |      |
|           |      |

ILLINOIS DEPARTMENT OF TRANSPORTATION

**TIES**

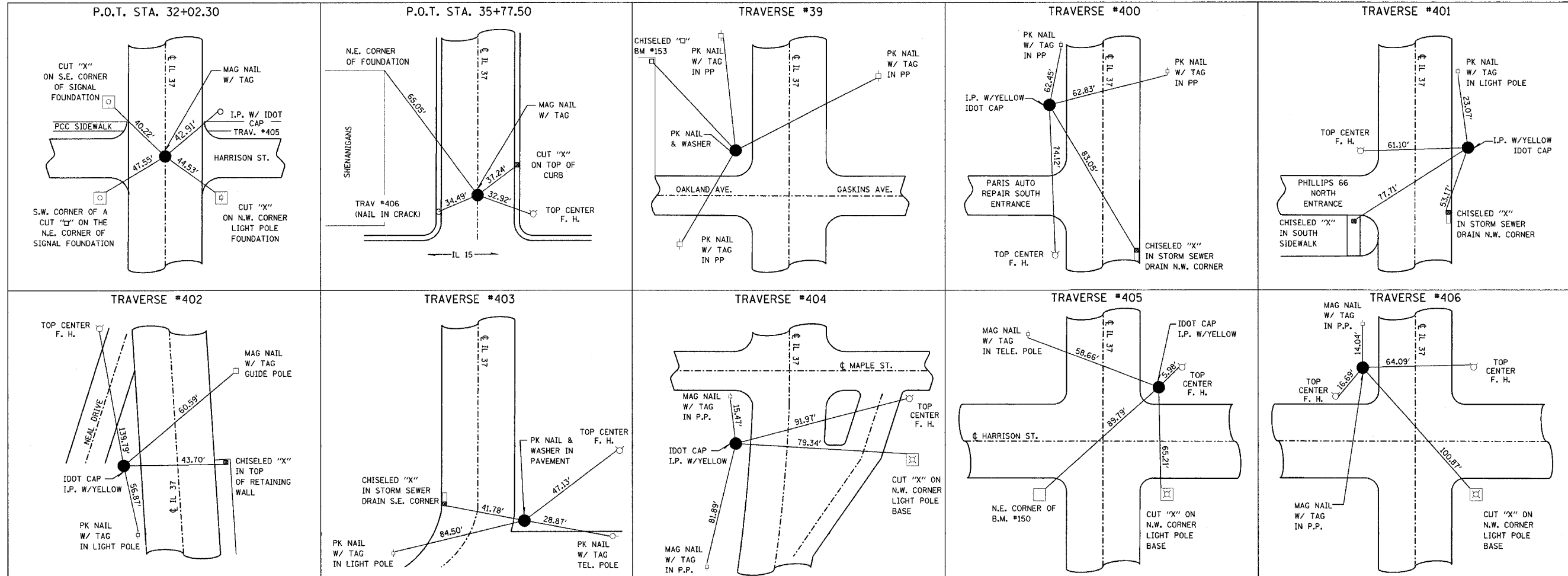
SCALE: VERT. HORIZ.  
DATE: \_\_\_\_\_ DRAWN BY: \_\_\_\_\_ CHECKED BY: \_\_\_\_\_



teasleyck  
4/1/2005  
c:\projects\74059\d\03904.pa.dgn

TIES

|                       |                       |                     |                      |                   |
|-----------------------|-----------------------|---------------------|----------------------|-------------------|
| FAS<br>8736           | SECTION<br>(110) RS-4 | COUNTY<br>JEFFERSON | TOTAL<br>SHEETS      | SHEET<br>NO.<br>8 |
| FED. ROAD DIST. NO. 7 |                       | ILLINOIS            | FED. AID PROJECT NO. |                   |
| CONTRACT NO. 74059    |                       |                     |                      |                   |

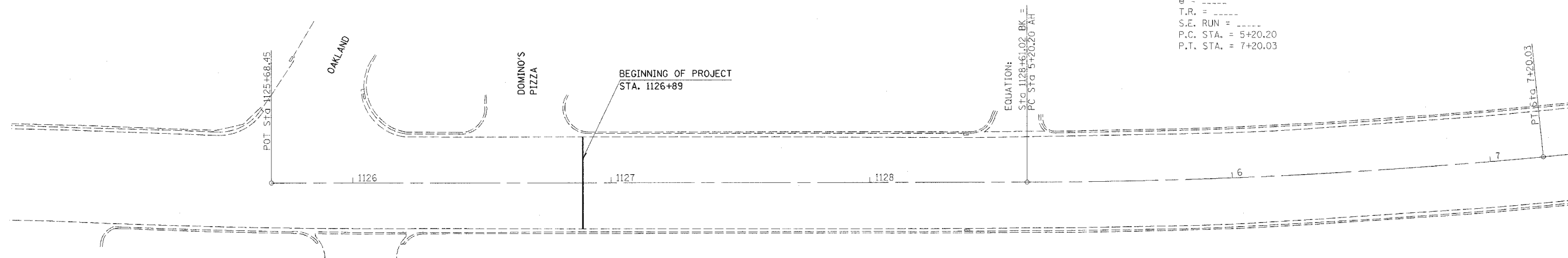
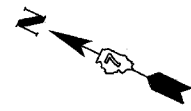


| REVISIONS |      | ILLINOIS DEPARTMENT OF TRANSPORTATION |
|-----------|------|---------------------------------------|
| NAME      | DATE |                                       |
|           |      | <b>TIES</b>                           |
|           |      |                                       |
|           |      |                                       |
|           |      |                                       |
|           |      |                                       |
|           |      |                                       |
|           |      |                                       |
|           |      |                                       |
|           |      |                                       |
|           |      |                                       |

SCALE: VERT.    DRAWN BY  
HORIZ.            CHECKED BY  
DATE

teas,leuck  
4/1/2005  
c:\projects\74059d\03904po.dgn  
PS 1

|                       |            |                      |                 |              |
|-----------------------|------------|----------------------|-----------------|--------------|
| FAS<br>RTE.           | SECTION    | COUNTY               | TOTAL<br>SHEETS | SHEET<br>NO. |
| 8736                  | (110) RS-4 | JEFFERSON            |                 | 9            |
| FED. ROAD DIST. NO. 7 | ILLINOIS   | FED. AID PROJECT NO. |                 |              |
| CONTRACT NO. 74059    |            |                      |                 |              |



EXIST. CURVE 6+21  
 PI STA. = 6+20.19  
 $\Delta$  = 5° 35' 28" (LT)  
 D = 2° 47' 53"  
 R = 2,047.76'  
 T = 99.99'  
 L = 199.83'  
 E = 2.44'  
 e = -----  
 T.R. = -----  
 S.E. RUN = -----  
 P.C. STA. = 5+20.20  
 P.T. STA. = 7+20.03

| REVISIONS |      |
|-----------|------|
| NAME      | DATE |
|           |      |
|           |      |
|           |      |
|           |      |
|           |      |
|           |      |
|           |      |
|           |      |
|           |      |
|           |      |

ILLINOIS DEPARTMENT OF TRANSPORTATION

**PLAN SHEET**

**STA 1125 + 68.45 TO 7 + 00**

SCALE: VERT.  
HORIZ.

DATE

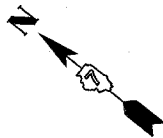
DRAWN BY

CHECKED BY

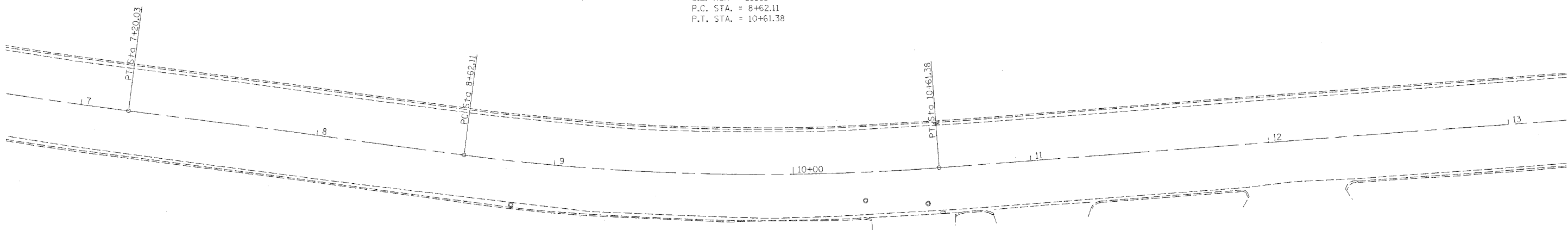
teasleyck  
4/1/2005  
c:\projects\74059d\03904po.dgn  
PS 2

| FAS<br>RTE.           | SECTION    | COUNTY    | TOTAL<br>SHEETS      | SHEET<br>NO. |
|-----------------------|------------|-----------|----------------------|--------------|
| 8736                  | (110) RS-4 | JEFFERSON |                      | 10           |
| FED. ROAD DIST. NO. 7 |            | ILLINOIS  | FED. AID PROJECT NO. |              |

CONTRACT NO. 74059



EXIST. CURVE 9+65  
 PI STA. = 9+62.11  
 $\Delta = 11^\circ 51' 30''$  (LT)  
 $D = 5^\circ 57' 03''$   
 $R = 962.81'$   
 $T = 99.99'$   
 $L = 199.27'$   
 $E = 5.18'$   
 $e = \text{-----}$   
 $T.R. = \text{-----}$   
 $S.E. \text{ RUN} = \text{-----}$   
 P.C. STA. = 8+62.11  
 P.T. STA. = 10+61.38



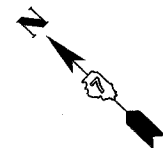
| REVISIONS |      |
|-----------|------|
| NAME      | DATE |
|           |      |
|           |      |
|           |      |
|           |      |
|           |      |
|           |      |
|           |      |
|           |      |
|           |      |
|           |      |

ILLINOIS DEPARTMENT OF TRANSPORTATION  
**PLAN SHEET**  
**STA 7+00 TO 13+00**  
 SCALE: VERT. \_\_\_\_\_  
 HORIZ. \_\_\_\_\_  
 DATE \_\_\_\_\_ DRAWN BY \_\_\_\_\_  
 CHECKED BY \_\_\_\_\_

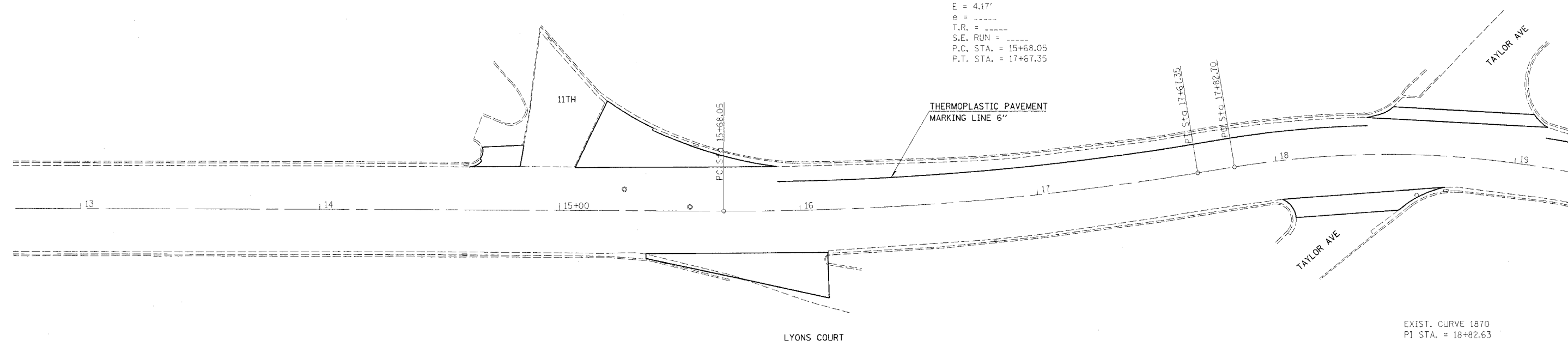
teesleyck  
 4/1/2005  
 c:\projects\74059d\03904pa.dgn  
 PS 3

| FAS<br>RTE.           | SECTION    | COUNTY               | TOTAL<br>SHEETS | SHEET<br>NO. |
|-----------------------|------------|----------------------|-----------------|--------------|
| 8736                  | (110) RS-4 | JEFFERSON            |                 | 11           |
| FED. ROAD DIST. NO. 7 | ILLINOIS   | FED. AID PROJECT NO. |                 |              |

CONTRACT NO. 74059



EXIST. CURVE 16+60  
 P.I. STA. = 16+67.93  
 $\Delta$  =  $9^{\circ} 33' 24''$  (LT)  
 D =  $4^{\circ} 47' 42''$   
 R = 1,194.89'  
 T = 99.88'  
 L = 199.30'  
 E = 4.17'  
 $e$  = -----  
 T.R. = -----  
 S.E. RUN = -----  
 P.C. STA. = 15+68.05  
 P.T. STA. = 17+67.35



EXIST. CURVE 1870  
 P.I. STA. = 18+82.63  
 $\Delta$  =  $28^{\circ} 17' 37''$  (RT)  
 D =  $14^{\circ} 27' 09''$   
 R = 396.44'  
 T = 99.92'  
 L = 195.77'  
 E = 12.40'  
 $e$  = -----  
 T.R. = -----  
 S.E. RUN = -----  
 P.C. STA. = 17+82.70  
 P.T. STA. = 19+78.47

NOTE:  
 OUTLINED AREAS TO BE  
 INCLUDED IN PAVING OPERATIONS

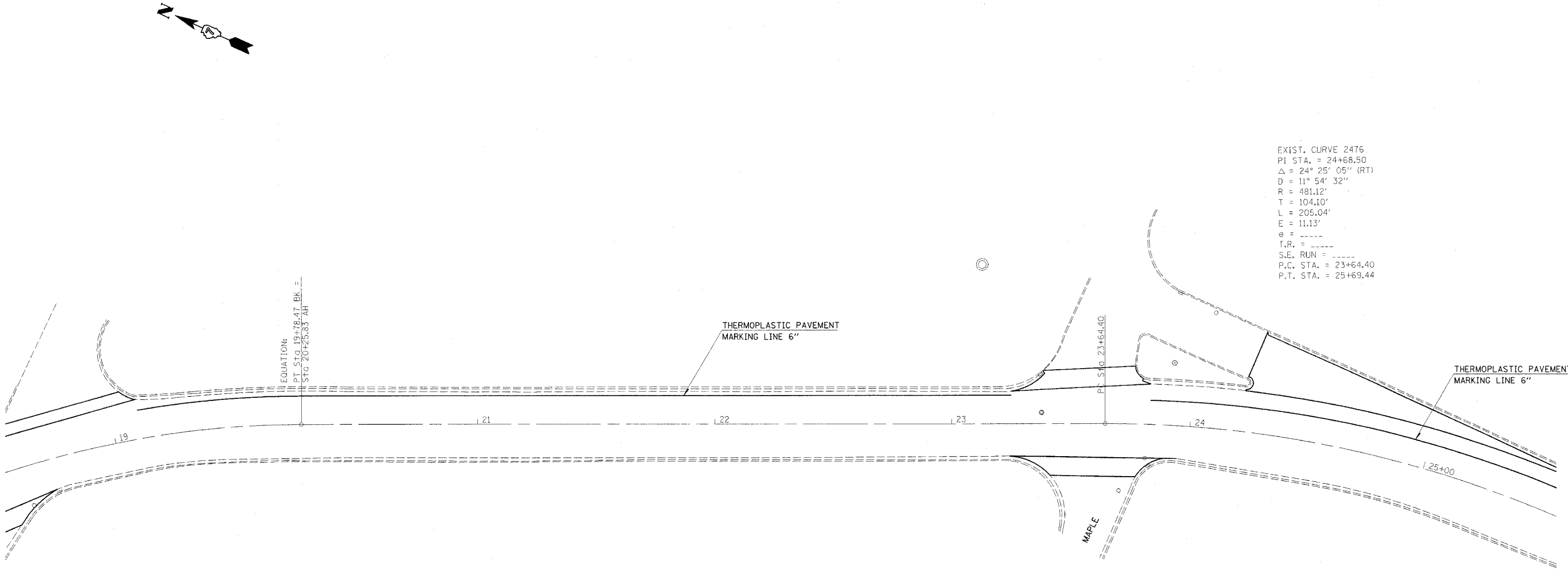
| REVISIONS |      |
|-----------|------|
| NAME      | DATE |
|           |      |
|           |      |
|           |      |
|           |      |
|           |      |
|           |      |
|           |      |
|           |      |
|           |      |
|           |      |

ILLINOIS DEPARTMENT OF TRANSPORTATION  
**PLAN SHEET**  
**STA 13+00 TO 19+00**  
 SCALE: VERT. \_\_\_\_\_  
 HORIZ. \_\_\_\_\_  
 DATE \_\_\_\_\_ DRAWN BY \_\_\_\_\_  
 CHECKED BY \_\_\_\_\_

teesleyck  
4/1/2005  
c:\projects\74059d\03904pa.dgn  
PS 4

|                       |                       |                     |                      |                    |
|-----------------------|-----------------------|---------------------|----------------------|--------------------|
| FAS<br>8736           | SECTION<br>(110) RS-4 | COUNTY<br>JEFFERSON | TOTAL<br>SHEETS      | SHEET<br>NO.<br>12 |
| FED. ROAD DIST. NO. 7 |                       | ILLINOIS            | FED. AID PROJECT NO. |                    |

CONTRACT NO. 74059



EXIST. CURVE 2476  
PI STA. = 24+68.50  
 $\Delta = 24^\circ 25' 05''$  (RT)  
D = 11° 54' 32"  
R = 481.12'  
T = 104.10'  
L = 205.04'  
E = 11.13'  
e = -----  
T.R. = -----  
S.E. RUN = -----  
P.C. STA. = 23+64.40  
P.T. STA. = 25+69.44

EXIST. CURVE 1870  
PI STA. = 18+82.63  
 $\Delta = 28^\circ 17' 37''$  (RT)  
D = 14° 27' 09"  
R = 396.44'  
T = 99.92'  
L = 195.77'  
E = 12.40'  
e = -----  
T.R. = -----  
S.E. RUN = -----  
P.C. STA. = 17+82.70  
P.T. STA. = 19+78.47

NOTE:  
OUTLINED AREAS TO BE  
INCLUDED IN PAVING OPERATIONS

| REVISIONS |      |
|-----------|------|
| NAME      | DATE |
|           |      |
|           |      |
|           |      |
|           |      |
|           |      |
|           |      |
|           |      |
|           |      |
|           |      |
|           |      |

ILLINOIS DEPARTMENT OF TRANSPORTATION

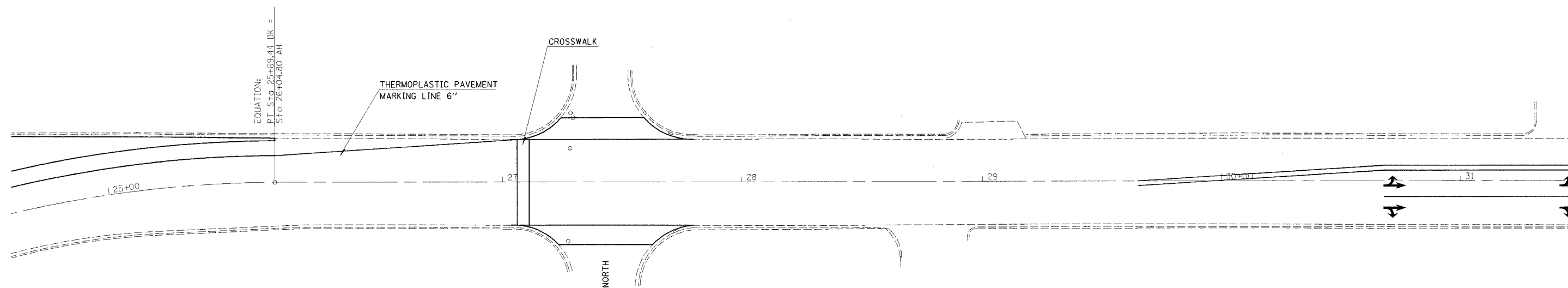
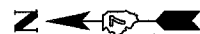
**PLAN SHEET**  
**STA 19+00 TO 25+00**

SCALE: VERT. \_\_\_\_\_  
HORIZ. \_\_\_\_\_  
DATE \_\_\_\_\_ DRAWN BY \_\_\_\_\_  
CHECKED BY \_\_\_\_\_

teeslejck  
 4/1/2005  
 c:\projects\74059d\03904pa.dgn  
 PS 5

| FAS<br>RTE. | SECTION    | COUNTY    | TOTAL<br>SHEETS | SHEET<br>NO. |
|-------------|------------|-----------|-----------------|--------------|
| 8736        | (110) RS-4 | JEFFERSON |                 | 13           |

FED. ROAD DIST. NO. 7 ILLINOIS FED. AID PROJECT NO.  
 CONTRACT NO. 74059



NOTE:  
 OUTLINED AREAS TO BE  
 INCLUDED IN PAVING OPERATIONS

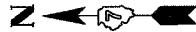
| REVISIONS |      |
|-----------|------|
| NAME      | DATE |
|           |      |
|           |      |
|           |      |
|           |      |
|           |      |
|           |      |
|           |      |
|           |      |
|           |      |
|           |      |

ILLINOIS DEPARTMENT OF TRANSPORTATION

**PLAN SHEET**  
**STA 25+00 TO 31+00**

SCALE: VERT.      DRAWN BY  
 HORIZ.              CHECKED BY  
 DATE

teasleyck  
 4/1/2005  
 c:\projects\74059\d\03904pa.dgn  
 PS 6

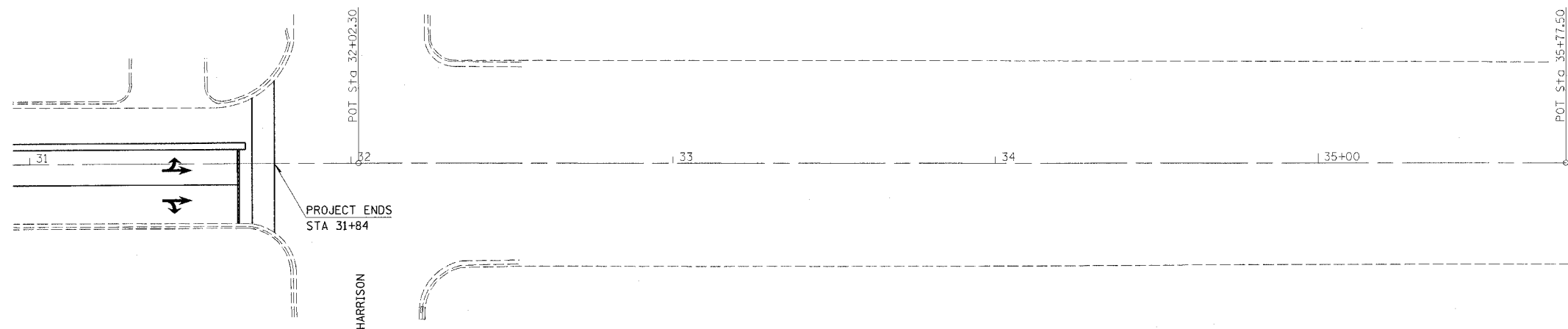


| FAS                   | SECTION    | COUNTY    | TOTAL SHEETS         | SHEET NO. |
|-----------------------|------------|-----------|----------------------|-----------|
| 8736                  | (110) RS-4 | JEFFERSON |                      | 14        |
| FED. ROAD DIST. NO. 7 |            | ILLINOIS  | FED. AID PROJECT NO. |           |

CONTRACT NO. 74059

|   |           |
|---|-----------|
| 78000100 THERMOPLASTIC PAVEMENT MARKING - LETTERS AND SYMBOLS |           |
| LEFT TURN/STRAIGHT ARROWS 2 EACH                              | 52 SQ FT  |
| RIGHT TURN/STRAIGHT ARROWS 2 EACH                             | 52 SQ FT  |
| TOTAL   | 104 SQ FT |

|  |       |
|--|-------|
| 78000650 THERMOPLASTIC PAVEMENT MARKING - LINE 24" |       |
| STOP BAR AT HARRISON STREET                        | 45 FT |
| TOTAL  | 45 FT |



| REVISIONS |      |
|-----------|------|
| NAME      | DATE |
|           |      |
|           |      |
|           |      |
|           |      |
|           |      |
|           |      |
|           |      |
|           |      |
|           |      |
|           |      |

ILLINOIS DEPARTMENT OF TRANSPORTATION  
**PLAN SHEET**  
**STA 31+00 TO 35+77.50**

SCALE: VERT. \_\_\_\_\_  
 HORIZ. \_\_\_\_\_  
 DATE \_\_\_\_\_

DRAWN BY \_\_\_\_\_  
 CHECKED BY \_\_\_\_\_