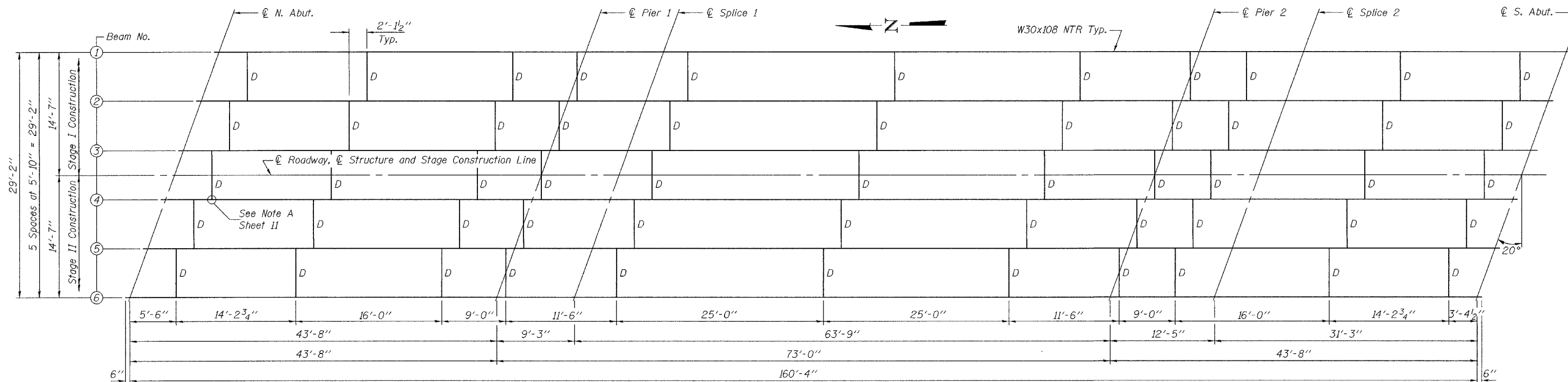


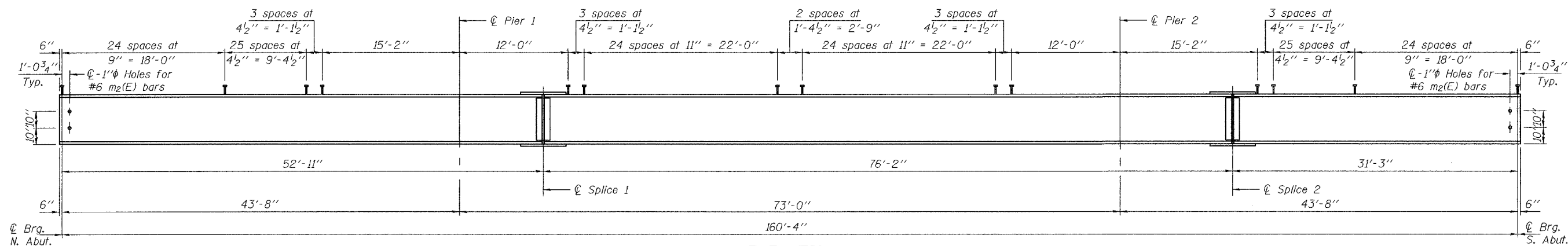
STATE OF ILLINOIS  
DEPARTMENT OF TRANSPORTATION

ROUTE NO.	SECTION	COUNTY	TOTAL SHEETS	SHEET NO.	SHEET NO. 10
F.A.P. 692	12-1BR-1	MADISON		35	20 SHEETS
FED. ROAD DIST. NO. 7	ILLINOIS	FED. AID PROJECT-			

Contract #76386

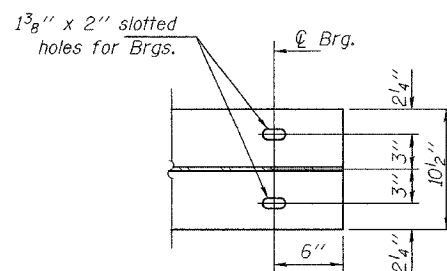


FRAMING PLAN

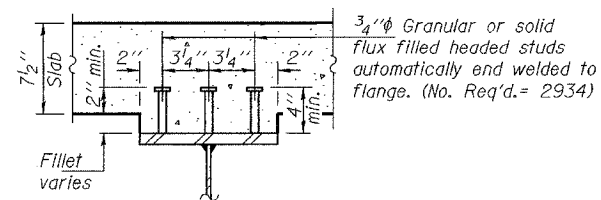


ELEVATION

All beams W30x108 and splice plates shall be AASHTO M 270, Grade 50 and shall meet Notch Toughness Requirements.



END OF BEAM DETAIL



SECTION A-A

DESIGNED	T. Kurtenbach
CHECKED	Alan Johnson
DRAWN	Paul Summer
CHECKED	TLK AMJ

EXAMINED	Thomas J. Demagalaki ENGINEER OF BRIDGE DESIGN
PASSED	Ralph E. Anderson ENGINEER OF BRIDGES AND STRUCTURES

April 22, 2005

STRUCTURAL STEEL  
F.A.P. ROUTE 692 - SECTION 12-1BR-1  
MADISON COUNTY  
STATION 1440+97.5  
STRUCTURE NO. 060-0335