

76563

PART OF THE S.W. 1/4 OF SECTION 09, T2S, R8W, OF THE 3RD PM, ST. CLAIR COUNTY, ILLINOIS

COORDINATES SHOWN HEREON ARE BASED ON SURVEY CONTROL DATA AS PROVIDED BY THE ILLINOIS DEPARTMENT OF TRANSPORTATION.

COORDINATE TABLE			
STATION	OFFSET	NORTH	EAST
29+026.630	0	189313.1662	715081.9973

BEARINGS SHOWN HEREON ARE BASED ON SURVEY CONTROL DATA AS PROVIDED BY THE ILLINOIS DEPARTMENT OF TRANSPORTATION.



LEGEND



CLASSIFICATION OF BUILDINGS

- C = COMMERCIAL
- R = RESIDENTIAL
- G = GARAGE
- S = SHED
- B = BARN
- MBH = MOBILE HOME
- APT = APARTMENT

- EXISTING CENTERLINE
- EXISTING RIGHT OF WAY LINE
- EXISTING EASEMENT LINE
- PROPOSED CENTERLINE
- PROPOSED RIGHT OF WAY LINE
- PROPOSED TEMPORARY EASEMENT LINE
- PROPOSED PERMANENT EASEMENT LINE
- SECTION LINE
- QUARTER SECTION LINE
- QUARTER QUARTER SECTION LINE
- PROPERTY (DEED) LINE
- APPARENT PROPERTY LINE
- MEASURED DIMENSION
- COMPUTED DIMENSION
- ENGLISH EQUIVALENT TO METRIC DIM.
- RECORDED DIMENSION
- FOUND IRON PIPE OR IRON ROD
- SET 5/8 INCH IRON ROD
- PERMANENT SURVEY MONUMENT, I.D.O.T. STD. 2135 (TO BE SET BY OTHERS)
- CUT CROSS FOUND OR SET
- SAME OWNERSHIP

- STAKING OF PROPOSED RIGHT OF WAY. SET 5/8 INCH METAL ROD WITH DIVISION OF HIGHWAY SURVEY MARKER TO MONUMENT THE POSITION SHOWN, IDENTIFIED BY INSCRIPTION DATA AND SURVEYORS REGISTRATION NUMBER.
- M STAKING OF PROPOSED RIGHT OF WAY IN CULTIVATED AREAS. SET 5/8 INCH METAL ROD WITH DIVISION OF HIGHWAY SURVEY MARKER 20 INCHES BELOW GROUND SURFACE TO MONUMENT THE POSITION SHOWN, IDENTIFIED BY INSCRIPTION DATA AND SURVEYORS REGISTRATION NUMBER.

STATE OF ILLINOIS )  
 ) SS  
 COUNTY OF ST. CLAIR )

THIS IS TO CERTIFY THAT I, EDGAR M. BARNAL AN ILLINOIS PROFESSIONAL LAND SURVEYOR, HAS SURVEYED THE PLAT OF HIGHWAYS SHOWN HEREON IN SECTION 9, TOWNSHIP 2 SOUTH, RANGE 8 WEST, OF THE THIRD PRINCIPAL MERIDIAN, ST. CLAIR COUNTY, THAT THE SURVEY IS TRUE AND COMPLETE AS SHOWN TO THE BEST OF MY KNOWLEDGE AND BELIEF, THAT THE PLAT CORRECTLY REPRESENTS SAID SURVEY, THAT ALL MONUMENTS FOUND AND ESTABLISHED ARE OF PERMANENT QUALITY AND OCCUPY THE POSITIONS SHOWN THEREON AND THAT THE MONUMENTS ARE SUFFICIENT TO ENABLE THE SURVEY TO BE RETRACED, MADE FOR THE DEPARTMENT OF TRANSPORTATION, STATE OF ILLINOIS.

DATED 9/19/2004

Edgar M. Barnal  
 EDGAR M. BARNAL, PLS #2750



Exp. Date: 11/30/2004

RIGHT OF WAY ESTABLISHED FOR ILLINOIS ROUTE 159 USING INFORMATION SUPPLIED BY THE ILLINOIS DEPARTMENT OF TRANSPORTATION AND PLAT BOOK 28 ON PAGE 9 & 10 AND PLAT BOOK 45 ON PAGE 113

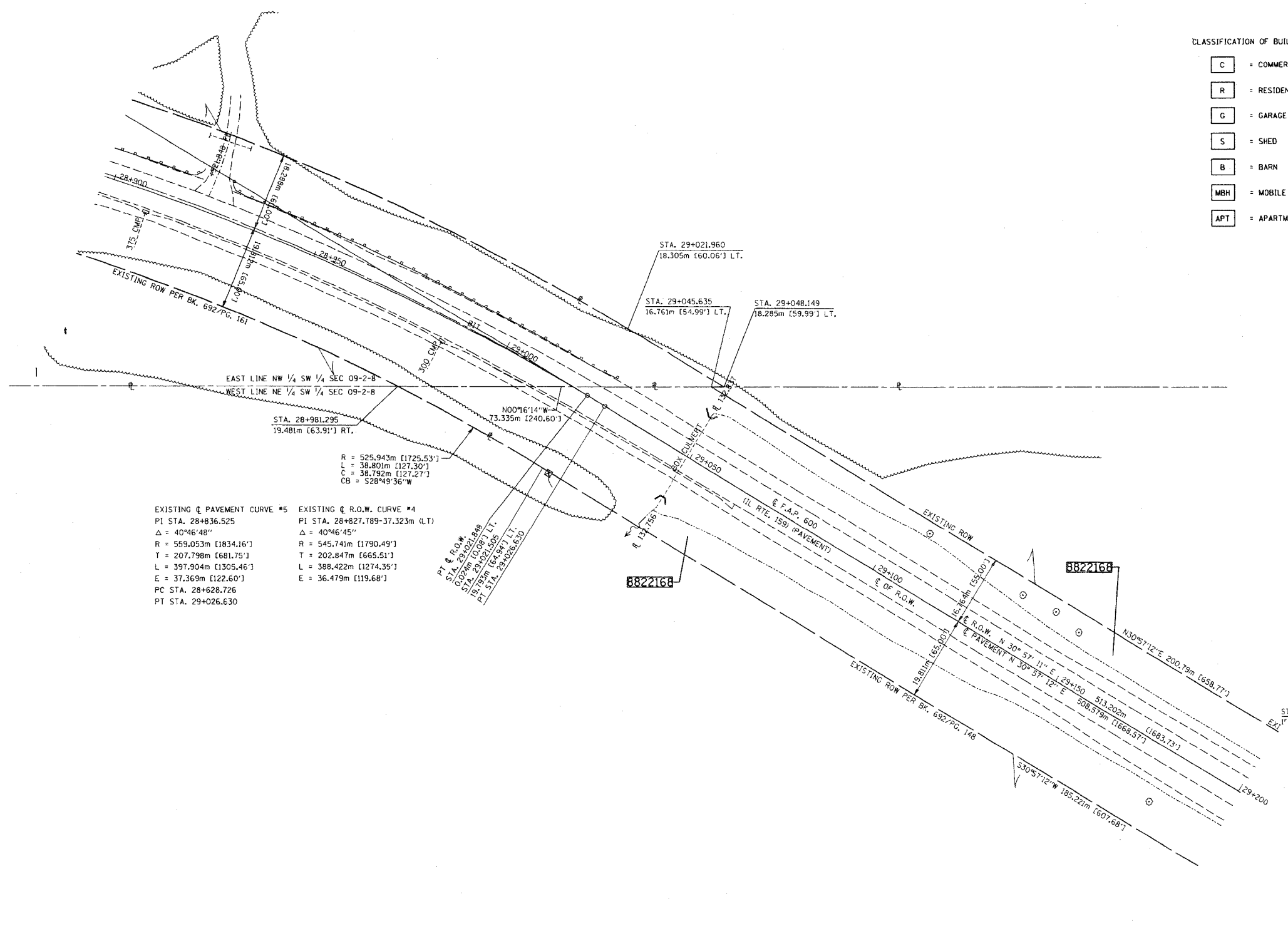
THOUVENOT, WADE & MOERCHEN, INC.  
 4948 OLD COLLINSVILLE ROAD  
 SWANSEA, ILLINOIS 62226  
 (618) 624-4488

ILLINOIS DEPARTMENT OF TRANSPORTATION  
 PLAT OF HIGHWAYS  
 FAP ROUTE 600 (IL 159)  
 SECTION (45,46,51) RS-3  
 ST. CLAIR COUNTY  
 JOB NO. R-98-022-98  
 STATION 28+900 TO STATION 29+200

0 m 10 m 20 m 30 m  
 SCALE 1:500 SHEET 26 OF 90

ILLINOIS DEPARTMENT OF TRANSPORTATION  
 DIVISION OF HIGHWAYS/DISTRICT 8  
 1102 EASTPORT PLAZA DRIVE  
 COLLINSVILLE, ILLINOIS 62234-6198

SHEET 1 OF 90 IS A COVER SHEET



EXISTING & PAVEMENT CURVE #5  
 PI STA. 28+836.525  
 Δ = 40°46'48"  
 R = 559.053m [1834.16']  
 T = 207.798m [681.75']  
 L = 397.904m [1305.46']  
 E = 37.369m [122.60']  
 PC STA. 28+628.726  
 PT STA. 29+026.630

EXISTING & R.O.W. CURVE #4  
 PI STA. 28+827.789-37.323m (LT)  
 Δ = 40°46'45"  
 R = 545.741m [1790.49']  
 T = 202.847m [665.51']  
 L = 388.422m [1274.35']  
 E = 36.479m [119.68']

PT & R.O.W. DATA:  
 STA. 28+981.295  
 STA. 29+026.630  
 STA. 29+045.635  
 STA. 29+081.295  
 STA. 29+117.955  
 STA. 29+154.615  
 STA. 29+191.275  
 STA. 29+227.935  
 STA. 29+264.595  
 STA. 29+301.255  
 STA. 29+337.915  
 STA. 29+374.575  
 STA. 29+411.235  
 STA. 29+447.895  
 STA. 29+484.555  
 STA. 29+521.215  
 STA. 29+557.875  
 STA. 29+594.535  
 STA. 29+631.195  
 STA. 29+667.855  
 STA. 29+704.515  
 STA. 29+741.175  
 STA. 29+777.835  
 STA. 29+814.495  
 STA. 29+851.155  
 STA. 29+887.815  
 STA. 29+924.475  
 STA. 29+961.135  
 STA. 29+997.795  
 STA. 30+034.455  
 STA. 30+071.115  
 STA. 30+107.775  
 STA. 30+144.435  
 STA. 30+181.095  
 STA. 30+217.755  
 STA. 30+254.415  
 STA. 30+291.075  
 STA. 30+327.735  
 STA. 30+364.395  
 STA. 30+401.055  
 STA. 30+437.715  
 STA. 30+474.375  
 STA. 30+511.035  
 STA. 30+547.695  
 STA. 30+584.355  
 STA. 30+621.015  
 STA. 30+657.675  
 STA. 30+694.335  
 STA. 30+730.995  
 STA. 30+767.655  
 STA. 30+804.315  
 STA. 30+840.975  
 STA. 30+877.635  
 STA. 30+914.295  
 STA. 30+950.955  
 STA. 30+987.615  
 STA. 31+024.275  
 STA. 31+060.935  
 STA. 31+097.595  
 STA. 31+134.255  
 STA. 31+170.915  
 STA. 31+207.575  
 STA. 31+244.235  
 STA. 31+280.895  
 STA. 31+317.555  
 STA. 31+354.215  
 STA. 31+390.875  
 STA. 31+427.535  
 STA. 31+464.195  
 STA. 31+500.855  
 STA. 31+537.515  
 STA. 31+574.175  
 STA. 31+610.835  
 STA. 31+647.495  
 STA. 31+684.155  
 STA. 31+720.815  
 STA. 31+757.475  
 STA. 31+794.135  
 STA. 31+830.795  
 STA. 31+867.455  
 STA. 31+904.115  
 STA. 31+940.775  
 STA. 31+977.435  
 STA. 32+014.095  
 STA. 32+050.755  
 STA. 32+087.415  
 STA. 32+124.075  
 STA. 32+160.735  
 STA. 32+197.395  
 STA. 32+234.055  
 STA. 32+270.715  
 STA. 32+307.375  
 STA. 32+344.035  
 STA. 32+380.695  
 STA. 32+417.355  
 STA. 32+454.015  
 STA. 32+490.675  
 STA. 32+527.335  
 STA. 32+563.995  
 STA. 32+600.655  
 STA. 32+637.315  
 STA. 32+673.975  
 STA. 32+710.635  
 STA. 32+747.295  
 STA. 32+783.955  
 STA. 32+820.615  
 STA. 32+857.275  
 STA. 32+893.935  
 STA. 32+930.595  
 STA. 32+967.255  
 STA. 33+003.915  
 STA. 33+040.575  
 STA. 33+077.235  
 STA. 33+113.895  
 STA. 33+150.555  
 STA. 33+187.215  
 STA. 33+223.875  
 STA. 33+260.535  
 STA. 33+297.195  
 STA. 33+333.855  
 STA. 33+370.515  
 STA. 33+407.175  
 STA. 33+443.835  
 STA. 33+480.495  
 STA. 33+517.155  
 STA. 33+553.815  
 STA. 33+590.475  
 STA. 33+627.135  
 STA. 33+663.795  
 STA. 33+700.455  
 STA. 33+737.115  
 STA. 33+773.775  
 STA. 33+810.435  
 STA. 33+847.095  
 STA. 33+883.755  
 STA. 33+920.415  
 STA. 33+957.075  
 STA. 34+003.735  
 STA. 34+040.395  
 STA. 34+077.055  
 STA. 34+113.715  
 STA. 34+150.375  
 STA. 34+187.035  
 STA. 34+223.695  
 STA. 34+260.355  
 STA. 34+297.015  
 STA. 34+333.675  
 STA. 34+370.335  
 STA. 34+407.000

PARCEL NO.	OWNER	TOTAL HOLDING	R.O.W. REQUIRED	PREVIOUSLY DEDICATED	REMAINDER	EASEMENTS		EASEMENT PURPOSE	PERMANENT TAX NUMBER	PROPERTY ACQUIRED BY
						TEMP	PERM			
8822168	ARLENE SCHAEFER, TRUSTEE OF ARLENE SCHAEFER DECLARATION OF TRUST, 1/2 INTEREST PAUL J. SCHAEFER, TRUSTEE OF PAUL J. SCHAEFER DECLARATION OF TRUST, 1/2 INTEREST TITLE REPORT NO. SC-2085	39,8650 AC 1,736,518 SF	2,2573 AC 98,329 SF	2,1885 AC 95,329 SF	37,6077 AC 1,638,189 SF				17-09-300-003 17-09-100-006	BK. 3902 PG. 1575

PLOT DATE: DATE-TIME