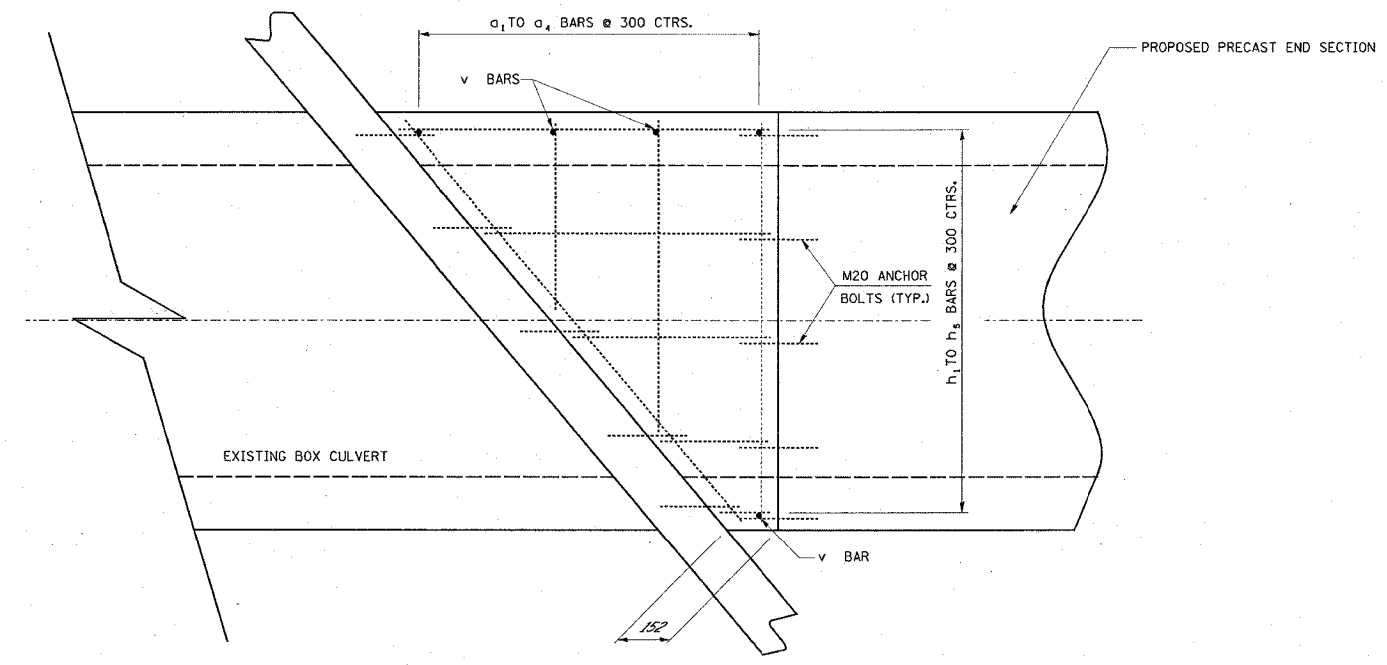


| | | | | |
|-------------------------------|---------|---------|--------------|-----------|
| FAP ROUTE | SECTION | COUNTY | TOTAL SHEETS | SHEET NO. |
| 600 | 5IRS-3 | * | 347 | 148B |
| STA. | | TO STA. | | |
| CONTRACT : 76563 | | | | |
| * ST. CLAIR & MONROE COUNTIES | | | | |



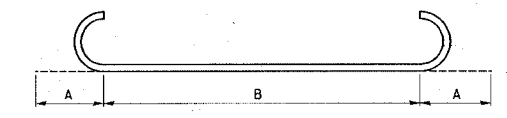
BILL OF MATERIAL

BOX CULVERT EXTENSIONS STA. 31+971.844

| BAR | QUANTITY | SIZE | LENGTH |
|-----|----------|---------------|--------|
| A1 | 4 | NO 15 (NO. 4) | 1.358 |
| A2 | 4 | NO 15 (NO. 4) | 1.088 |
| A3 | 4 | NO 15 (NO. 4) | 0.638 |
| A4 | 4 | NO 15 (NO. 4) | 1.748 |
| A5 | 2 | NO 15 (NO. 4) | 1.130 |
| A6 | 2 | NO 15 (NO. 4) | 0.860 |
| A7 | 2 | NO 15 (NO. 4) | 0.520 |
| A8 | 2 | NO 15 (NO. 4) | 1.520 |
| | | | |
| H1 | 10 | NO 15 (NO. 4) | 1.040 |
| H2 | 4 | NO 15 (NO. 4) | 0.800 |
| H3 | 4 | NO 15 (NO. 4) | 0.530 |
| H4 | 4 | NO 15 (NO. 4) | 0.320 |
| H5 | 10 | NO 15 (NO. 4) | 0.180 |
| V | 12 | NO 15 (NO. 4) | 0.824 |

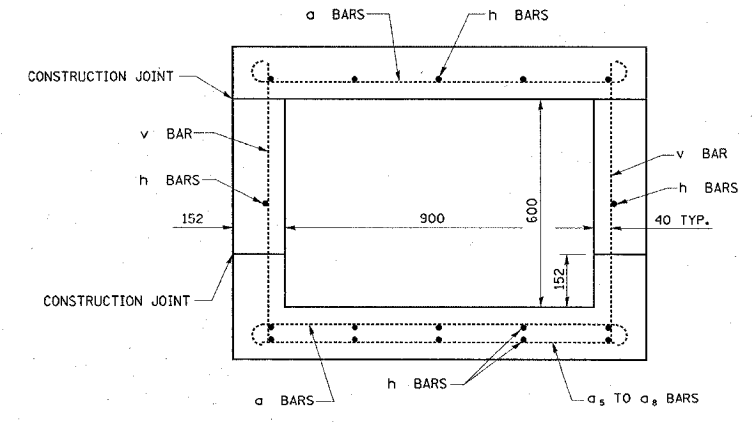
CLASS SI CONCRETE 2.13 CU. M.
 REINFORCEMENT BARS 88,039 KG.
 M20 ANCHOR BOLTS 44 EACH

STA. 31+971.844 EXTENSION DETAILS (LT. & RT.)
 SKEWED 49.6229° LT. AH.

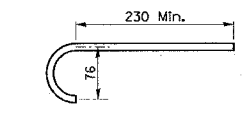


a BAR DETAIL

| BAR | A | B |
|----------------|-----|-------|
| a ₁ | 114 | 1.13 |
| a ₂ | 114 | 0.860 |
| a ₃ | 114 | 0.520 |
| a ₄ | 114 | 1.52 |



SECTION THRU BARREL



M20 ANCHOR BOLT DETAIL

ALL DIMENSIONS ARE IN mm
 UNLESS DESIGNATED OTHERWISE

| REVISIONS | |
|-----------|------|
| NAME | DATE |
| | |
| | |
| | |
| | |
| | |

ILLINOIS DEPARTMENT OF TRANSPORTATION
BOX CULVERT EXTENSION DETAILS
STA. 31+971.844
 FAP ROUTE 600
 SECTION 5IRS-3
 ST. CLAIR & MONROE COUNTIES
 DRAWN BY:

PLOT DATE: Tuesday March 29, 2005 @ 1:03:50 PM

| | | |
|-----------|--------------------|------|
| PLAN | SERIALIZED | DATE |
| NOTE BOOK | PLotted | BY |
| NO. | RT. OF WAY CHECKED | |
| | CADD FILE NAME | |

3/29/2005
 Tuesday March 29, 2005 @ 1:03:50 PM
 c:\pcc\jcora\mids\591\plan\gendetail.dgn LV11-03