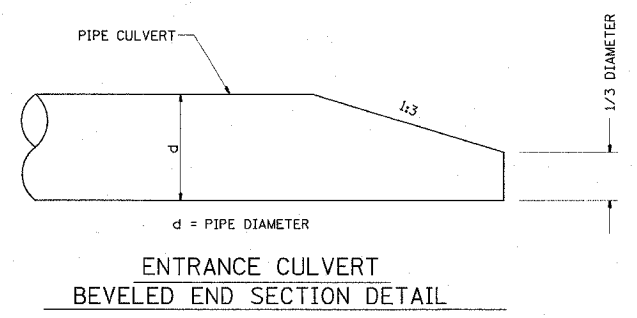
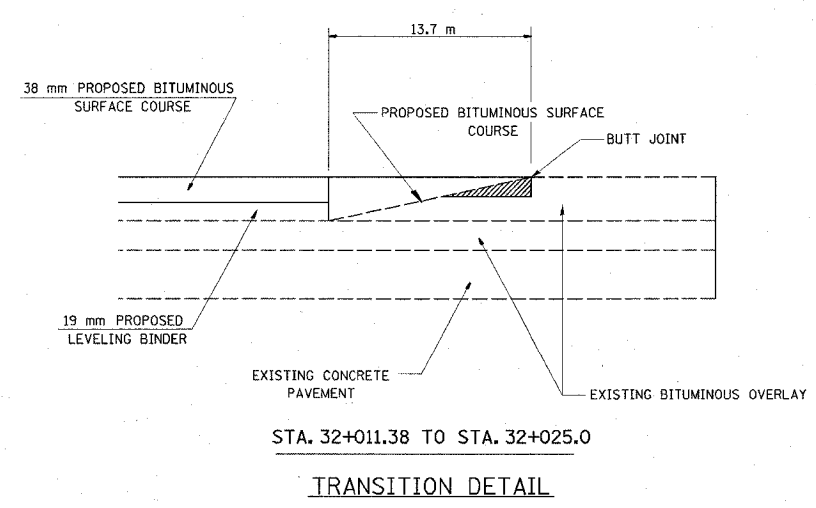


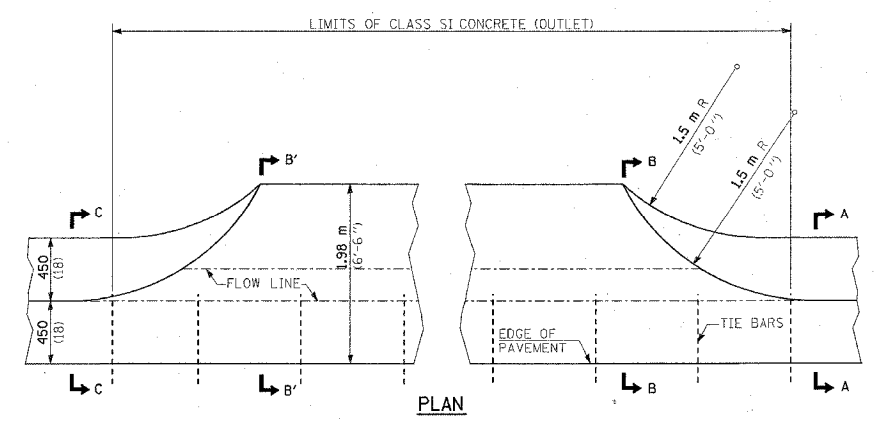
FAP ROUTE	SECTION	COUNTY	TOTAL SHEETS	SHEET NO
600	51RS-3	*	347	152
STA.		TO STA.		
CONTRACT : 76563				
* ST. CLAIR & MONROE COUNTIES				



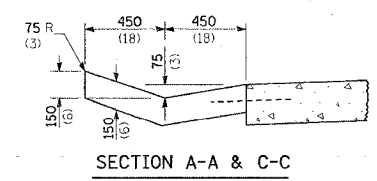
ENTRANCE CULVERT  
BEVELED END SECTION DETAIL



STA. 32+011.38 TO STA. 32+025.0  
TRANSITION DETAIL

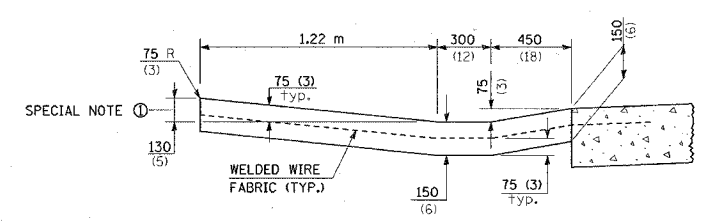


PLAN



SECTION A-A & C-C

QUANTITY  
SECTION B'-B' TO B-B = 0.3 m<sup>3</sup>/m  
(0.12 CU. YD./FT.)  
SECTION C-C TO B'-B' + B'-B' TO A-A = 0.55 m<sup>3</sup> (0.72 CU. YD.)

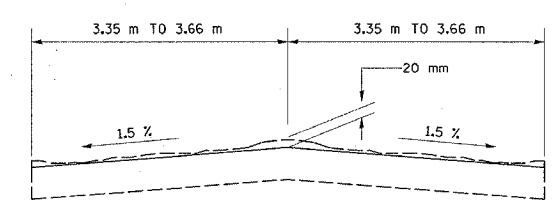


SECTION B-B & B'-B'

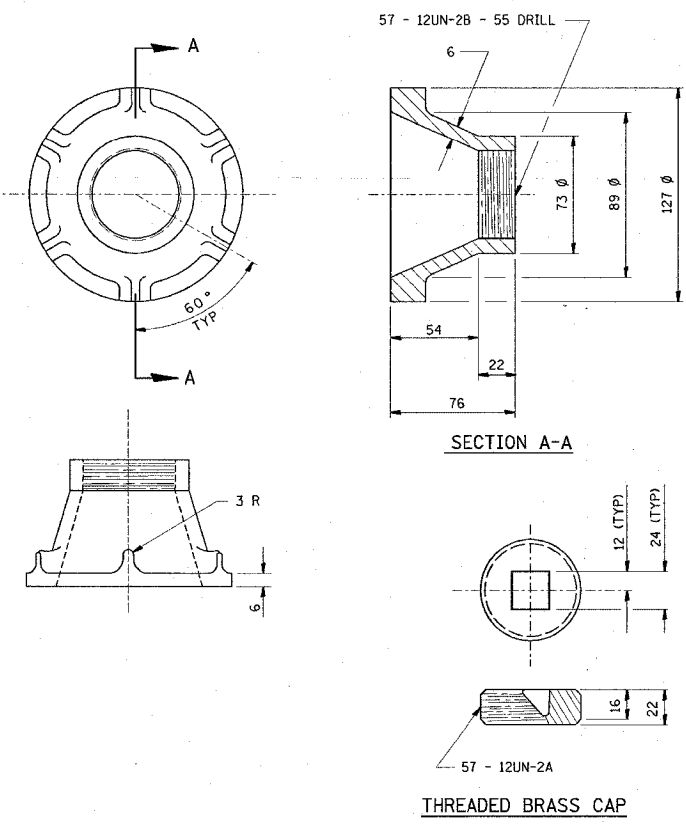
SPECIAL NOTES:  
SECTION B-B & B'-B' 125 (5) IS THE NORMAL DIMENSION. IF SPECIFIED IN THE PLANS, THE FOLLOWING SHALL BE USED FOR IMPROVED ENTRANCE MATCH-UP: MINIMUM - 75 (3) MAXIMUM - 225 (9)

SEE STANDARD 606101 AND SECTION 606 OF THE STANDARD SPECIFICATIONS FOR ADDITIONAL INFORMATION

TYPE A GUTTER ENTRANCE DETAIL  
MODIFICATION TO STANDARD 606101

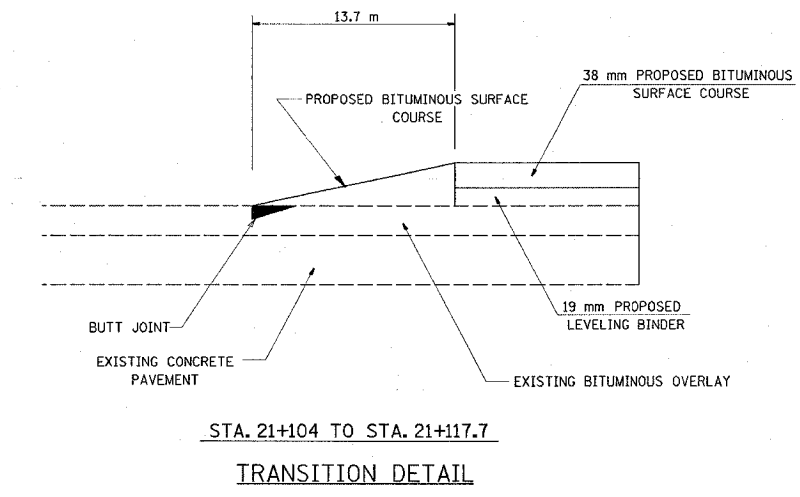


MILLING DETAIL

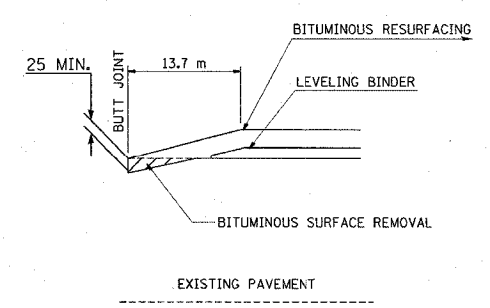


CAST IRON SURVEY  
MONUMENT COVER

NOTES:  
ALL RADII ARE 9 mm UNLESS SPECIFIED.  
ALL CHAMFERS ARE 45°.  
ROUND ALL SHARP EDGES.  
USE THREADS AND DIMENSIONS AS SPECIFIED OR EQUIVALENT BY APPROVAL OF THE ENGINEER  
THE SURVEY MONUMENT COVER ASSEMBLY SHOWN IS AN EXAMPLE. OTHER MODELS, SIMILAR IN DESIGN, MAY BE USED WITH THE APPROVAL OF THE ENGINEER  
THE THREADS OF THE CAP AND COVER WILL BE COATED WITH PIPE TAPE OR PIPE THREAD COMPOUND PRIOR TO INSTALLATION.



STA. 21+104 TO STA. 21+117.7  
TRANSITION DETAIL



BUTT JOINT DETAIL

ALL DIMENSIONS ARE IN mm UNLESS DESIGNATED OTHERWISE

REVISIONS	
NAME	DATE

ILLINOIS DEPARTMENT OF TRANSPORTATION  
MISCELLANEOUS DETAILS  
FAP ROUTE 600  
SECTION 51RS-3  
ST. CLAIR & MONROE COUNTIES  
DRAWN BY:

/// MATERIAL TO BE REMOVED

3/29/2005  
Tuesday March 29, 2005 @ 12:00:43 PM  
c:\p\projects\mcd\51rs3\plan\genmisc\misc.dgn L151-63