

STATE OF ILLINOIS
DEPARTMENT OF TRANSPORTATION

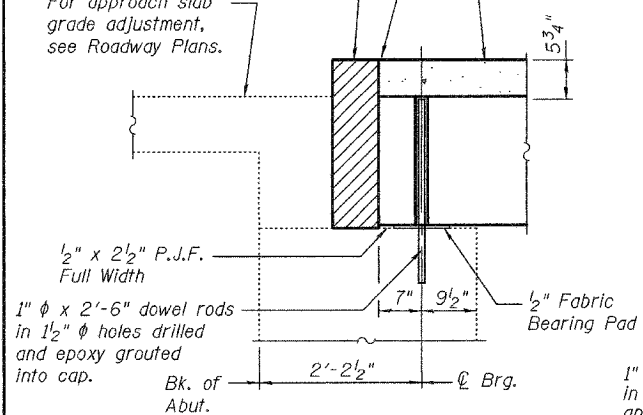
ROUTE NO.	SECTION	COUNTY	DATE SHEETS	SHEET NO.
		Bond	2p	23
FED. ROAD DIST. NO. 7	ILLINOIS	FED. AID PROJECT-		

Contract Number: 76860

SHEET NO. 2
6 SHEETS

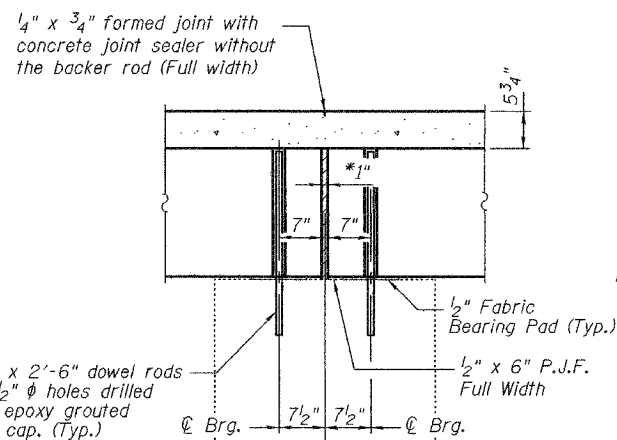
Hatched area to be poured after concrete wearing surface is in place and to match overlay cross-slope. See sheet 5 of 6 for details and reinforcing.

For approach slab grade adjustment, see Roadway Plans.

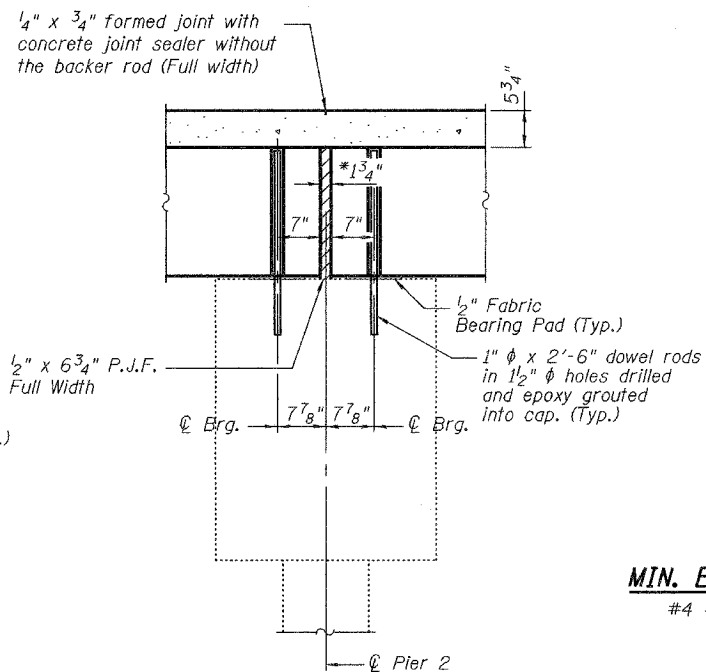


**TYPICAL SECTION THRU
FIXED ABUTMENTS**

*Joint shall be filled with non-shrink grout. This dimension may vary plus or minus to accommodate tolerance in beam lengths.



**PIER 1 SECTION
FIXED**

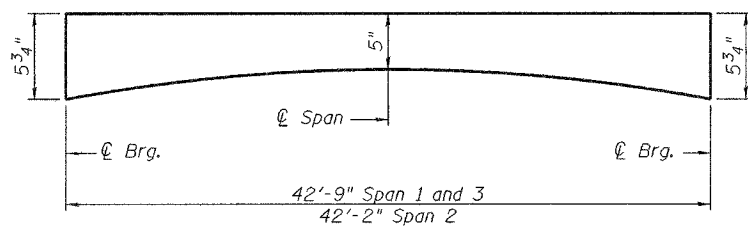


**PIER 2 SECTION
FIXED**

MIN. BAR LAP
#4 = 1'-4"

Notes:

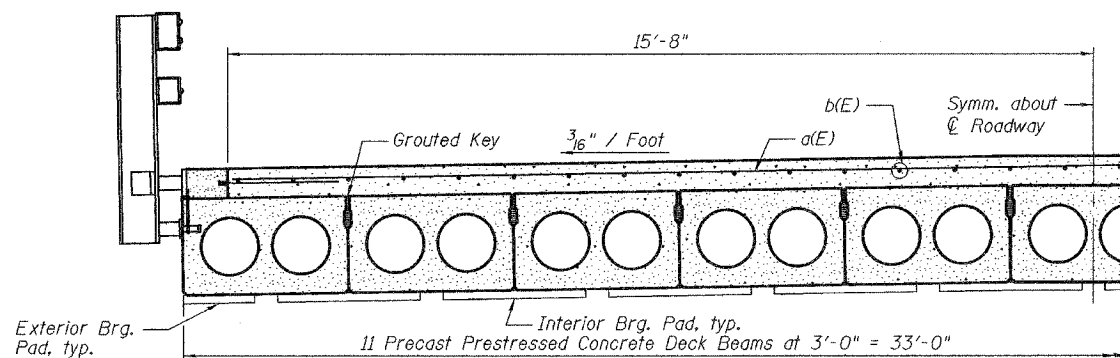
After beams have been erected, holes shall be drilled into substructure and anchor dowels placed 1'-3" Minimum into existing caps. Dowel holes shall be filled with non-shrink grout to top of beam and allowed to cure min 24 hours prior to grouting the shear keys.



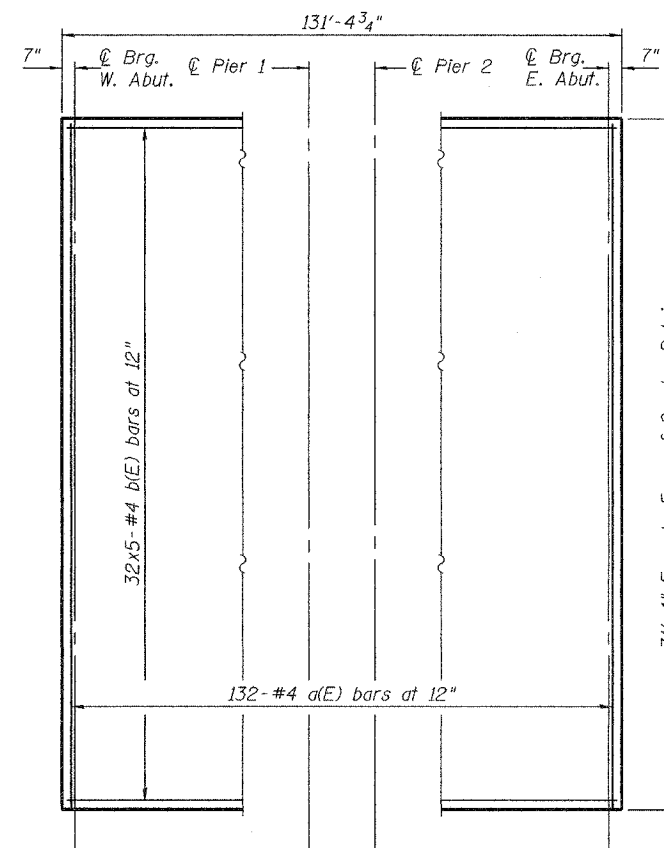
CONCRETE WEARING SURFACE PROFILE

Note:

Thicknesses shown are for Beams 1 thru 5 and 7 thru 11. Thickness for Beam 6 will vary from those shown at beam edges to 1/4" additional at \O Roadway.



HALF CROSS SECTION



CONCRETE OVERLAY PARTIAL PLAN

BILL OF MATERIAL

Bar	No.	Size	Length	Shape
a(E)	132	#4	31'-0"	—
b(E)	160	#4	27'-6"	—
Reinforcement Bars, Epoxy Coated			Pound	5,670

Reinforcement bars designated (E) shall be epoxy coated.
Bars indicated thus 1 x 2-#5 etc. indicates 1 line of bars with 2 lengths per line.

DESIGNED	P.S.J.
CHECKED	V.H.V.
DRAWN	Drew Christopher
CHECKED	P.S.J. V.H.V.

EXAMINED	May 9, 2005
PASSED	John A. Morris ENGINEER OF STRUCTURAL SERVICES
	Ralph E. Anderson ENGINEER OF BRIDGES AND STRUCTURES

**OVERLAY AND
JOINT DETAILS**
F.A. RT. 785
BOND COUNTY
SN 003-0025