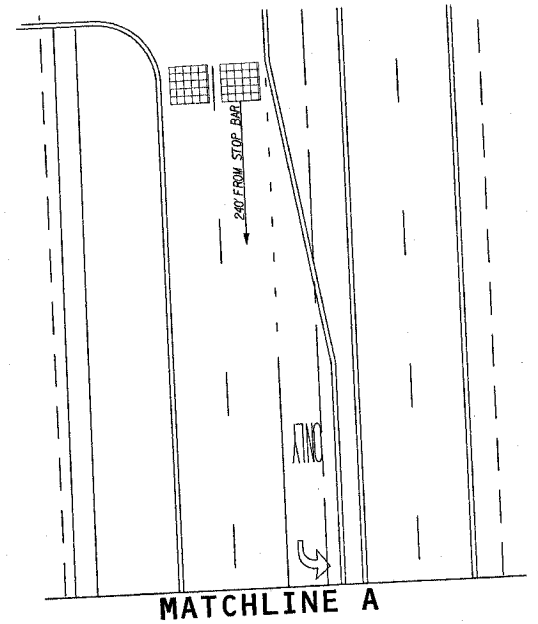
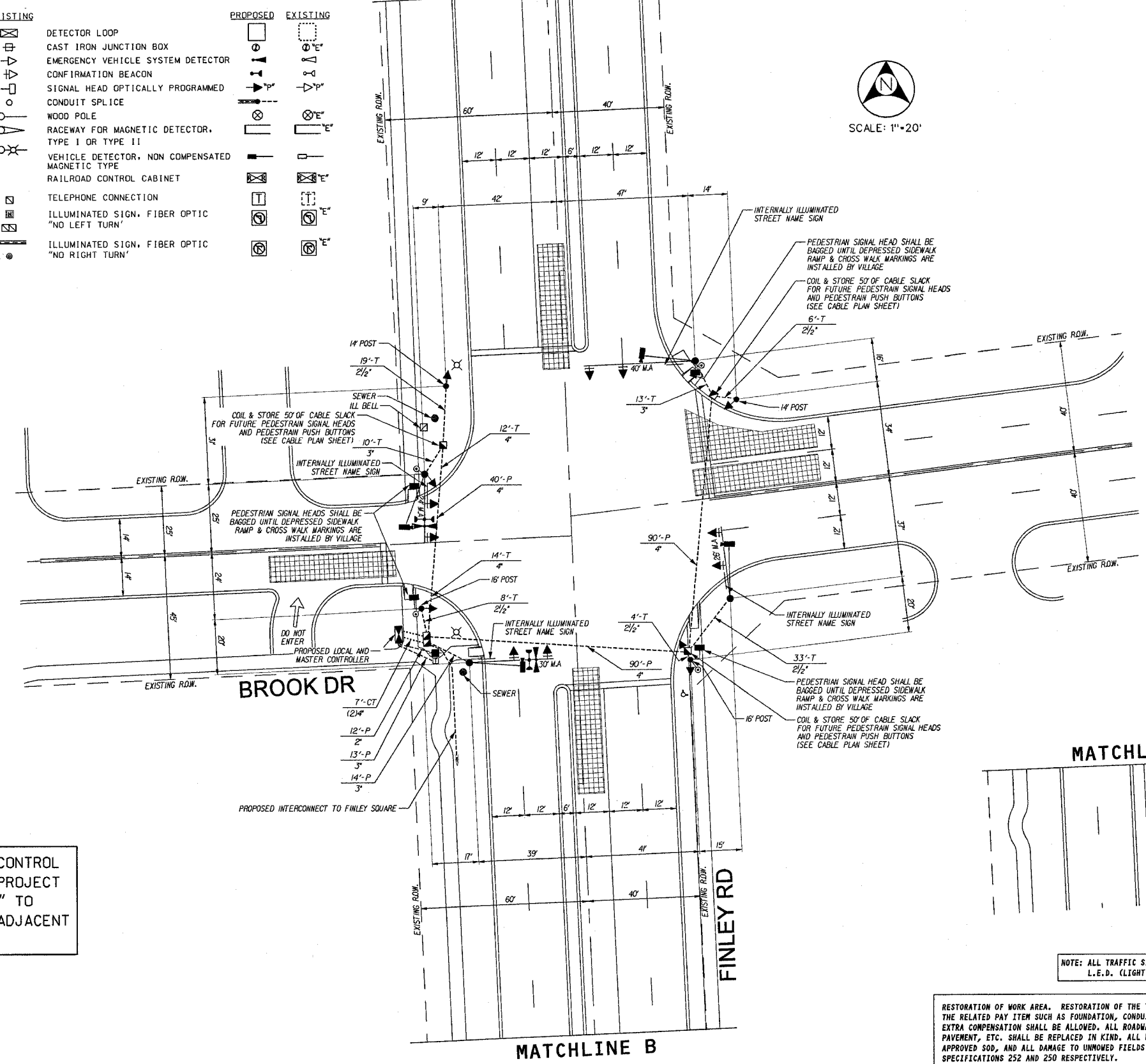


TRAFFIC SIGNAL LEGEND

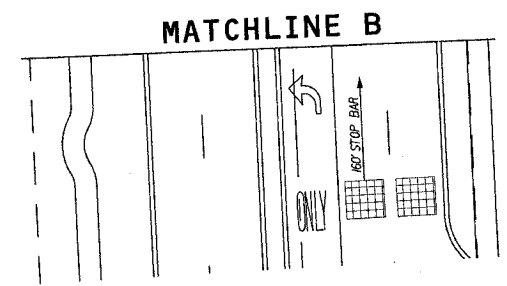
	PROPOSED	EXISTING		PROPOSED	EXISTING
CONTROLLER			DETECTOR LOOP		
SERVICE INSTALLATION			CAST IRON JUNCTION BOX		
SIGNAL HEAD			EMERGENCY VEHICLE SYSTEM DETECTOR		
SIGNAL HEAD WITH BACKPLATE			CONFIRMATION BEACON		
SIGNAL HEAD, PEDESTRIAN			SIGNAL HEAD OPTICALLY PROGRAMMED		
SIGNAL POST			CONDUIT SPLICE		
MAST ARM ASSEMBLY AND POLE, STEEL			WOOD POLE		
MAST ARM ASSEMBLY AND POLE, ALUMINUM			RACEWAY FOR MAGNETIC DETECTOR, TYPE I OR TYPE II		
COMBINATION MAST ARM ASSEMBLY AND POLE, STEEL WITH LUMINAIRE			VEHICLE DETECTOR, NON COMPENSATED MAGNETIC TYPE		
UNIT DUCT			RAILROAD CONTROL CABINET		
COMMON TRENCH			TELEPHONE CONNECTION		
HANDHOLE			ILLUMINATED SIGN, FIBER OPTIC "NO LEFT TURN"		
HEAVY DUTY HANDHOLE			ILLUMINATED SIGN, FIBER OPTIC "NO RIGHT TURN"		
DOUBLE HANDHOLE					
G.S. CONDUIT IN TRENCH OR PUSHED					
PEDESTRIAN PUSHBUTTON DETECTOR					
VIDEO DETECTION CAMERA					
VIDEO DETECTION ZONE					

MATCHLINE A



NOTE: DEPRESSED SIDEWALK RAMPS & CROSSWALK MARKINGS SHALL BE INSTALLED BY THE VILLAGE OF DOWNERS GROVE.

THE TRAFFIC SIGNAL CONTROL EQUIPMENT FOR THIS PROJECT SHALL BE "ECONOLITE" TO MATCH THE EXISTING ADJACENT SYSTEM.



NOTE: ALL TRAFFIC SIGNAL HEADS SHALL L.E.D. (LIGHT EMITTING DIODE)

RESTORATION OF WORK AREA. RESTORATION OF THE TRAFFIC SIGNAL WORK AREA SHALL BE INCIDENTAL TO THE RELATED PAY ITEM SUCH AS FOUNDATION, CONDUIT, HANDHOLE, TRENCH, AND BACKFILL, ETC., AND NO EXTRA COMPENSATION SHALL BE ALLOWED. ALL ROADWAYS SURFACES SUCH AS SHOULDERS, MEDIAN, SIDEWALKS, PAVEMENT, ETC. SHALL BE REPLACED IN KIND. ALL DAMAGE TO MOWED LAWNS SHALL BE REPLACED WITH AN APPROVED SOG, AND ALL DAMAGE TO UNMOWED FIELDS SHALL BE SEEDED IN ACCORDANCE WITH STANDARD SPECIFICATIONS 252 AND 250 RESPECTIVELY.



METRO TRANSPORTATION GROUP, INC.
 TRAFFIC ENGINEERING, TRANSPORTATION PLANNING
 AND SIGNAL SYSTEMS/DESIGN
 3100 W. HIGGINS ROAD, HOFFMAN ESTATES, IL 60195 PH# 630 213-1000

REVISIONS		
NO.	DATE	DESCRIPTION

TRAFFIC SIGNAL INSTALLATION PLAN

FINLEY ROAD @ BROOK ROAD
 DOWNERS GROVE, ILLINOIS

FILE NAME: 08_sp.dgn	SHEET NO.:
DATE: SEPT 7, 2004	8
PROJECT NO.:	OF 13
H0312-18	