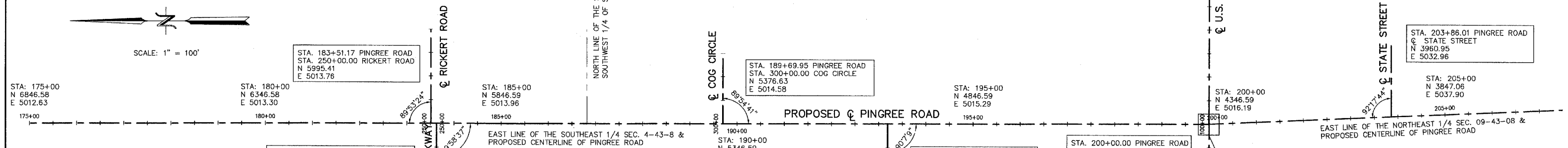
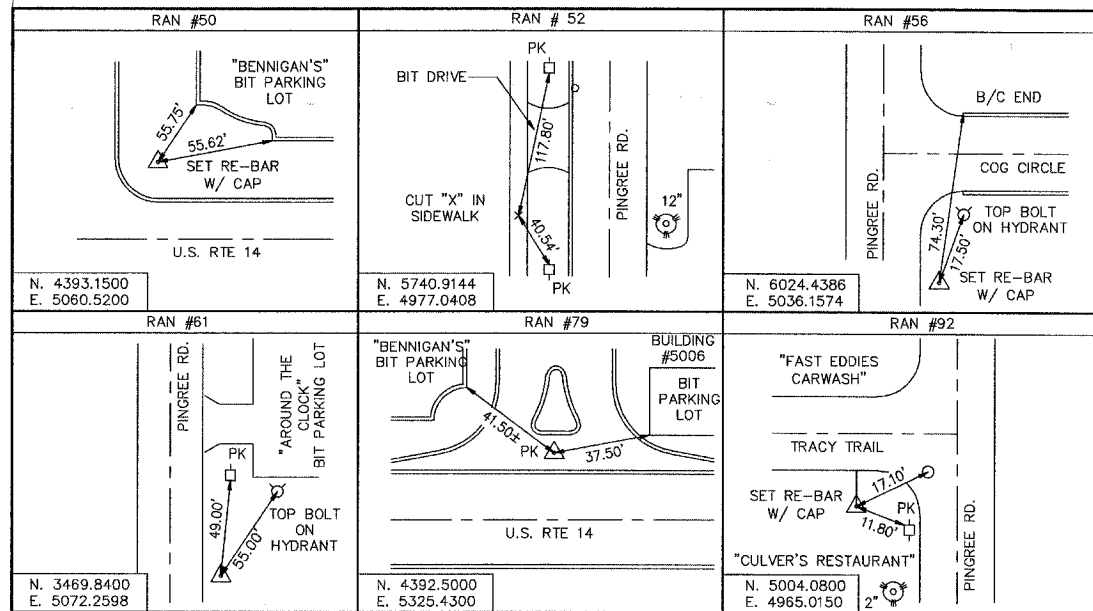


F.A.U. ROUTE	CONTRACT NO.	COUNTY	TOTAL SHTS.
0126	83776	McHENRY	77
STATE SECTION 99-00090-00-FP			
ALIGNMENTS, TIES AND BENCHMARKS			
F.H.W.A. REG.5 ILLINOIS PROJECT M-8003			



**EXISTING U.S. ROUTE 14
CENTER LINE CURVE DATA - CURVE #3**

P.I. STA. 106+49.96
 $\Delta = 01^{\circ}37'40''$
 $D = 00'-32'-33''$
 $R = 10560.00'$
 $T = 150.01'$
 $L = 300.00'$
 $E = 1.07'$
P.C. STA. 104+99.96
P.T. STA. 107+99.96

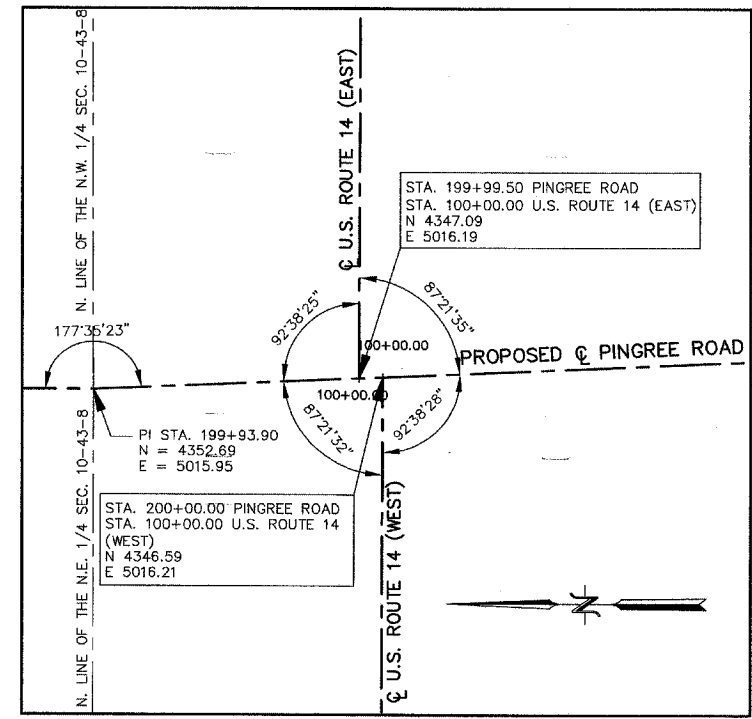
**EXISTING U.S. ROUTE 14
CENTER LINE CURVE DATA - CURVE #2**

P.I. STA. 96+99.96
 $\Delta = 02^{\circ}50'14''$
 $D = 01'-25'-07''$
 $R = 4038.79'$
 $T = 100.02'$
 $L = 200.00'$
 $E = 1.24'$
P.R.C. STA. 95+99.96
P.T. STA. 97+99.96

**EXISTING U.S. ROUTE 14
CENTER LINE CURVE DATA - CURVE #1**

P.I. STA. 94+99.96
 $\Delta = 02^{\circ}46'55''$
 $D = 01'-23'-28''$
 $R = 4118.95'$
 $T = 100.02'$
 $L = 199.98'$
 $E = 1.21'$
P.C. STA. 93+99.96
P.R.C. STA. 95+99.96

- BENCHMARKS:**
- BM "4": SQUARE CUT ON THE NORTHEAST CORNER OF CONCRETE SLAB ON THE NORTH SIDE OF THE PUMP HOUSE LOCATED JUST NORTH OF CONGRESS PARKWAY ON THE WEST SIDE OF PINGREE ROAD. ELEVATION: 896.30
 - BM "D": NORTHWEST BOLT ON FIRST FIRE HYDRANT SOUTH OF RICKERT ROAD ON THE EAST SIDE OF PINGREE ROAD. ELEVATION: 903.79
 - BM "E": WEST BOLT ON FIRE HYDRANT LOCATED ON THE SOUTHEAST CORNER OF COG CIRCLE AND PINGREE ROAD. ELEVATION: 905.49
 - BM "F": NORTHWEST BOLT ON FIRE HYDRANT ON THE EAST SIDE OF PINGREE ROAD ACROSS FROM TRACY TRAIL. ELEVATION: 925.31
 - BM "G": NORTHWEST BOLT ON FIRST FIRE HYDRANT LOCATED NORTH OF U.S. ROUTE 14 ON THE EAST SIDE OF PINGREE ROAD. ELEVATION: 919.22
 - BM "H": NORTHWEST BOLT ON FIRE HYDRANT ACROSS FROM STATE STREET ON THE WEST SIDE OF PINGREE ROAD. (SECOND FIRE HYDRANT SOUTH OF U.S. ROUTE 14) ELEVATION: 916.01
 - BM "I": NORTHWEST BOLT ON THIRD FIRE HYDRANT SOUTH OF U.S. ROUTE 14 ON THE WEST SIDE OF PINGREE ROAD. ELEVATION: 916.62



DETAIL "A"