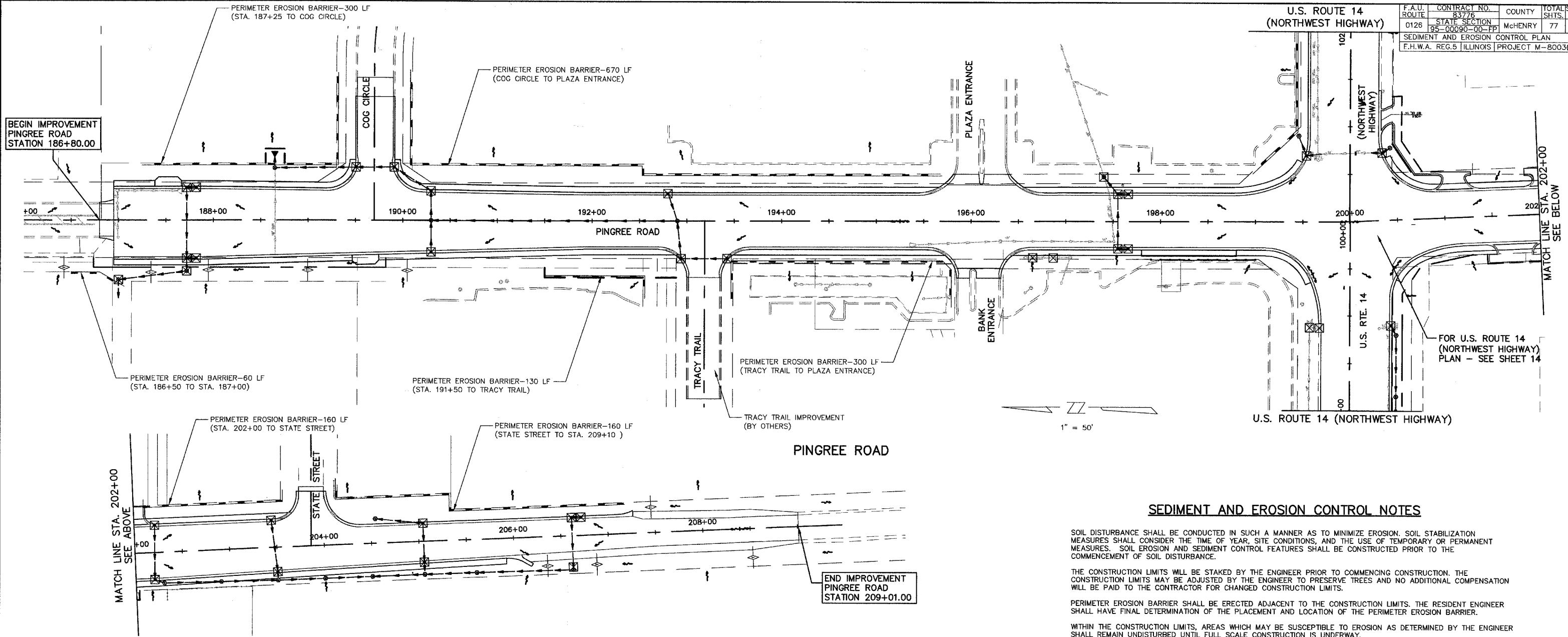
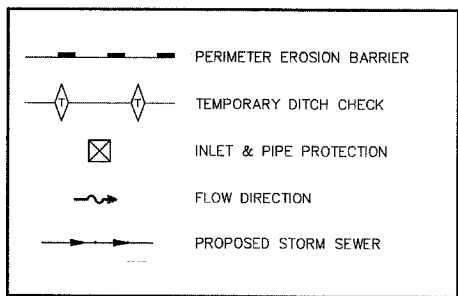


F.A.U. ROUTE	CONTRACT NO.	COUNTY	TOTAL SHTS.
0126	83776	McHENRY	77
STATE SECTION 95-00090-00-PP			
SEDIMENT AND EROSION CONTROL PLAN			
F.H.W.A. REG.5 ILLINOIS PROJECT M-8003			



**SEDIMENT AND EROSION CONTROL LEGEND**



**SEDIMENT AND EROSION CONTROL NOTES**

SOIL DISTURBANCE SHALL BE CONDUCTED IN SUCH A MANNER AS TO MINIMIZE EROSION. SOIL STABILIZATION MEASURES SHALL CONSIDER THE TIME OF YEAR, SITE CONDITIONS, AND THE USE OF TEMPORARY OR PERMANENT MEASURES. SOIL EROSION AND SEDIMENT CONTROL FEATURES SHALL BE CONSTRUCTED PRIOR TO THE COMMENCEMENT OF SOIL DISTURBANCE.

THE CONSTRUCTION LIMITS WILL BE STAKED BY THE ENGINEER PRIOR TO COMMENCING CONSTRUCTION. THE CONSTRUCTION LIMITS MAY BE ADJUSTED BY THE ENGINEER TO PRESERVE TREES AND NO ADDITIONAL COMPENSATION WILL BE PAID TO THE CONTRACTOR FOR CHANGED CONSTRUCTION LIMITS.

PERIMETER EROSION BARRIER SHALL BE ERECTED ADJACENT TO THE CONSTRUCTION LIMITS. THE RESIDENT ENGINEER SHALL HAVE FINAL DETERMINATION OF THE PLACEMENT AND LOCATION OF THE PERIMETER EROSION BARRIER.

WITHIN THE CONSTRUCTION LIMITS, AREAS WHICH MAY BE SUSCEPTIBLE TO EROSION AS DETERMINED BY THE ENGINEER SHALL REMAIN UNDISTURBED UNTIL FULL SCALE CONSTRUCTION IS UNDERWAY.

DITCH CHECK INSTALLATION SHALL OCCUR IMMEDIATELY UPON DITCHES BEING DISTURBED AND SHALL NOT BE PROLONGED UNTIL DITCHES ARE FINAL GRADED.

DISTURBED AREAS SHALL BE PERMANENTLY SEEDED OR SODDED IMMEDIATELY AFTER GRADING. IF NOT, THEY SHALL BE TEMPORARILY SEEDED WITHIN 14 CALENDAR DAYS FROM DISTURBANCE OR RE-DISTURBANCE.

SEDIMENT COLLECTED DURING CONSTRUCTION AND MAINTENANCE OF THE VARIOUS TEMPORARY EROSION CONTROL SYSTEMS SHALL BE DISPOSED OF ON THE SITE ON A REGULAR BASIS AS DIRECTED BY THE ENGINEER. THIS COST SHALL BE INCLUDED IN THE COST OF THE EROSION CONTROL PAY ITEM.

SEDIMENT OR SOIL REACHING AN IMPROVED PUBLIC RIGHT-OF-WAY, STREET, ALLEY OR PARKING AREA SHALL BE REMOVED BY SCRAPING OR STREET CLEANING AS ACCUMULATIONS WARRANT AND TRANSPORTED TO A CONTROLLED SEDIMENT DISPOSAL AREA ON SITE. THIS COST SHALL NOT BE PAID FOR SEPARATELY, BUT SHALL BE INCLUDED IN THE COST OF THE CONTRACT.

DURING DE-WATERING OPERATIONS, DISCHARGES SHALL BE PUMPED INTO SEDIMENT BASINS OR SILT TRAPS. DE-WATERING DIRECTLY INTO FIELD TILES OR STORMWATER STRUCTURES IS PROHIBITED.

THE TEMPORARY EROSION CONTROL SYSTEMS SHALL BE REMOVED WITHIN 30 DAYS AFTER FINAL SITE STABILIZATION OR AS DIRECTED BY THE ENGINEER. THE COST OF REMOVAL SHALL BE INCLUDED IN THE COST OF THE ITEM.

ALL EROSION CONTROL PRODUCTS FURNISHED SHALL BE SPECIFICALLY RECOMMENDED BY THE MANUFACTURER FOR THE USE SPECIFIED IN THE EROSION CONTROL PLAN. PRIOR TO APPROVAL AND USE, THE CONTRACTOR SHALL SUBMIT TO THE ENGINEER CERTIFICATION BY THE PRODUCER STATING THE INTENDED USE OF THE PRODUCT AND THAT THE PHYSICAL PROPERTIES REQUIRED FOR THIS APPLICATION ARE MET OR EXCEEDED. THE CONTRACTOR SHALL PROVIDE MANUFACTURER INSTALLATION PROCEDURES TO THE ENGINEER.

THE EROSION CONTROL MEASURES INDICATED ON THE PLANS ARE THE MINIMUM REQUIREMENTS. ADDITIONAL MEASURES MAY BE REQUIRED, AS DIRECTED BY THE ENGINEER OR GOVERNING AGENCY.

ALL ITEMS SHALL BE CONSTRUCTED AS SHOWN ON STANDARD 280001, THE PLAN DETAILS, AND AS DIRECTED BY THE ENGINEER. MAINTENANCE AND CLEANING OF THE EROSION CONTROL ITEMS SHALL BE INCLUDED IN THE RESPECTIVE EROSION CONTROL PAY ITEM. FAILURE TO MAINTAIN ANY EROSION CONTROL PAY ITEM AS DIRECTED BY THE ENGINEER WILL REQUIRE THE ENGINEER TO FILE AN INCIDENT OF NON-COMPLIANCE (ION) WITH THE ILLINOIS EPA.

CONSTRUCTION EQUIPMENT SHALL BE STORED, FUELED AND WASHED ONLY AT DESIGNATED LOCATIONS. ALL NECESSARY MEASURES SHALL BE TAKEN TO CONTAIN ANY FUEL AND OTHER POLLUTANT IN ACCORDANCE WITH EPA WATER QUALITY REGULATIONS. LEAKING EQUIPMENT OR SUPPLIES SHALL BE IMMEDIATELY REPAIRED OR REMOVED FROM THE SITE.

SEE CROSS SECTIONS FOR GRADING, SEEDING, AND SODDING LIMITS.