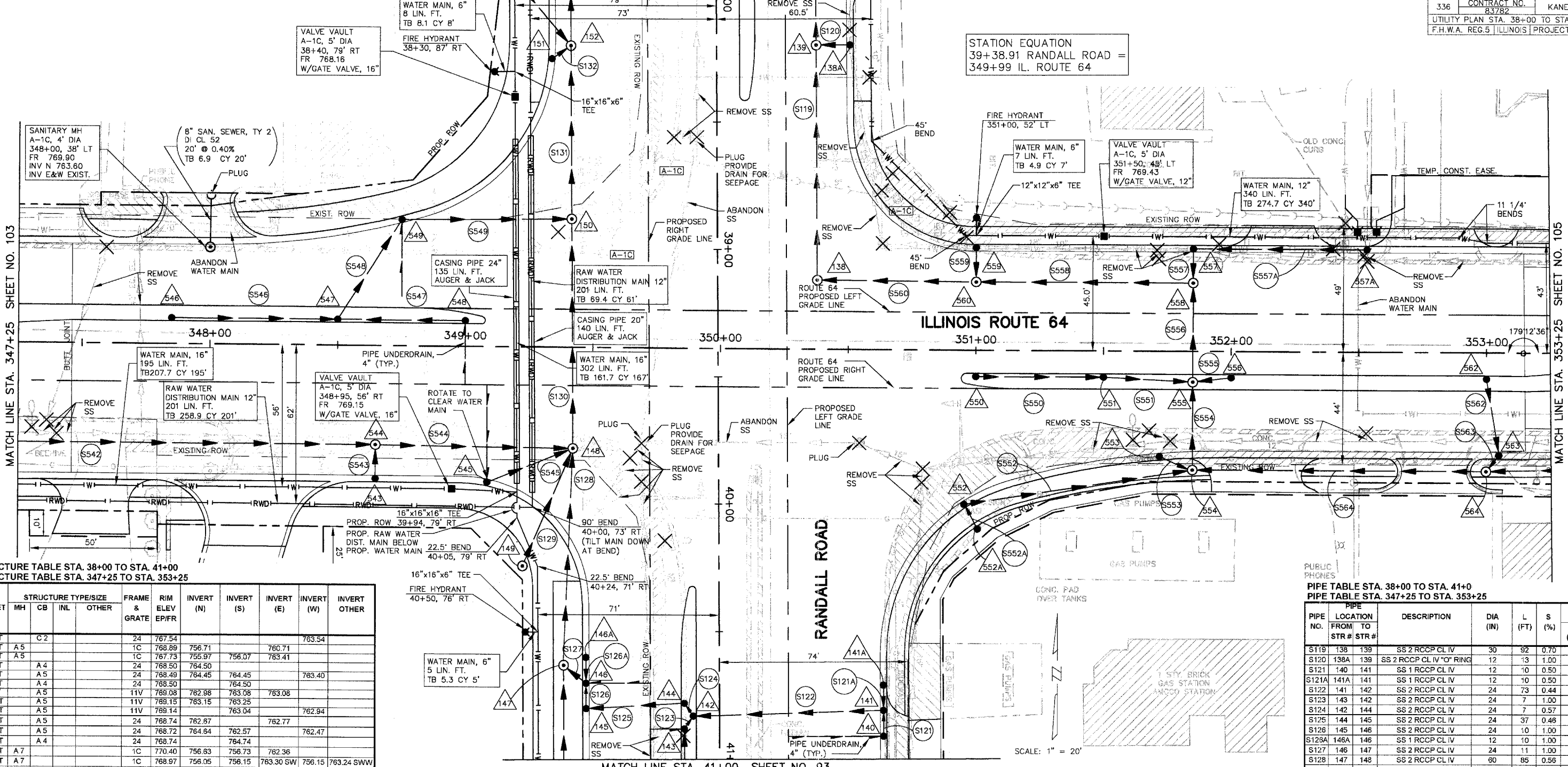


F.A.P. ROUTE	COUNTY SECTION	COUNTY	TOTAL SHTS.
99-00243-00-PV	336	KANE	268
CONTRACT NO.	83782		
UTILITY PLAN STA. 38+00 TO STA. 41+00			
F.H.W.A. REG.5 ILLINOIS PROJECT F-0336			

MATCH LINE STA. 38+00 SHEET NO. 93



STATION EQUATION
 39+38.91 RANDALL ROAD =
 349+99 IL. ROUTE 64

MATCH LINE STA. 347+25 SHEET NO. 103

MATCH LINE STA. 353+25 SHEET NO. 105

DRAINAGE STRUCTURE TABLE STA. 38+00 TO STA. 41+00
 DRAINAGE STRUCTURE TABLE STA. 347+25 TO STA. 353+25

NO.	STA.	OFFSET	STRUCTURE TYPE/SIZE	FRAME & GRATE	RIM ELEV EPI/FR	INVERT (N)	INVERT (S)	INVERT (E)	INVERT (W)	INVERT OTHER
138A	38+20	51' LT	C 2	24	767.54					763.54
138	38+12	39' LT	A 5	1C	768.89	756.71		760.71		
139	38+20	39' LT	A 5	1C	767.73	755.97	756.07	763.41		
140	40+01	63' LT	A 4	24	768.50	764.50				
141	40+01	63' LT	A 5	24	768.49	764.45	764.45			763.40
141A	40+71	63' LT	A 4	24	768.50	764.50				
142	40+83	9' RT	A 5	11V	769.08	762.98	763.08	763.08		
143	40+88	15' RT	A 5	11V	769.15	763.15	763.25			
144	40+78	15' RT	A 5	11V	769.14	763.04				762.94
145	40+80	51' RT	A 5	24	768.74	762.87		762.77		
146	40+70	51' RT	A 5	24	768.72	764.84	762.57			762.47
146A	40+60	51' RT	A 4	24	768.74	764.74				
147	40+83	61' RT	A 7	1C	770.40	756.63	756.73	762.36		
148	39+78	57' RT	A 7	1C	768.97	756.05	756.15	763.30 SW	756.15	763.24 SWW
149	40+24	77' RT	A 4	1C	769.60	763.80	764.00 EX.			
150	38+88	57' RT	A 7	1C	768.53	755.45	755.55			763.86
151	38+25	83.22' RT	A 4	24	767.43			763.43		
152	38+20	57' RT	A 7	1C	767.44	754.97	755.07	763.35		755.40 NW
543	348+65	51' RT	C 2	24	768.83	764.83				
544	348+65	39' RT	A 5	1C	769.03		764.70	756.92	760.83	
545	349+09	52' RT	A 5	24	768.68					763.60 NE
546	347+85	9' LT	A 4	11V	770.26		766.04			
547	348+50	9' LT	A 4	11V	769.39	764.83	764.93	765.39		
548	349+00	9' LT	A 4	11V	769.00			765.15		
549	348+75	48.26' LT	A 4	24	768.62		764.62	764.52		
550	351+00	9' RT	A 4	11V	769.05		765.05			
551	351+50	9' RT	A 4	11V	768.35		764.45	764.55		
552	350+95	59.38' RT	A 5	24	768.58		765.08	764.08		
552A	351+01	70' RT	C 2	1P	770.05	765.19				
553	351+70	40.21' RT	A 4	24	769.27		765.27			
554	351+85	46.5' RT	A 5	1C	768.80	763.88	764.18	763.88		765.11 NW
555	351+85	12' RT	A 5	1C	770.27	763.24	763.34	765.67	764.10	
556	352+00	9' RT	A 4	11V	769.82			765.82		
557	351+85	39' LT	A 4	24	769.48		765.27	765.37		
557A	352+53	39' LT	C 2	24	770.24	768.20 EX.			766.05	
558	351+85	27' LT	A 5	1C	769.72	765.14	762.75		762.85	
559	351+00	39' LT	A 4	24	768.59		764.20			
560	351+00	27' LT	A 5	1C	768.77	764.07		761.59	761.49	
561			NOT USED							
562	353+00	9' RT	A 4	11V	770.73		766.10			
563	353+05	39' RT	A 4	24	770.64	765.96	765.86			
564	353+00	46.5' RT	A 4	1C	771.00	765.78		765.75	765.50	

PIPE TABLE STA. 38+00 TO STA. 41+00
 PIPE TABLE STA. 347+25 TO STA. 353+25

PIPE NO.	LOCATION FROM TO STR #	DESCRIPTION	DIA (IN)	L (FT)	S (%)	TRENCH BACKFILL L (FT)	TRENCH BACKFILL VOL (CY)
S119	138 139	SS 2 RCCP CL IV	30	92	0.70	92	152.1
S120	138A 139	SS 2 RCCP CL IV "O" RING	12	13	1.00	13	1.7
S121	140 141	SS 1 RCCP CL IV	12	10	0.50	10	1.3
S121A	141A 141	SS 1 RCCP CL IV	12	10	0.50	10	1.3
S122	141 142	SS 2 RCCP CL IV	24	73	0.44	73	12.8
S123	143 142	SS 2 RCCP CL IV	24	7	1.00	7	1.6
S124	142 144	SS 2 RCCP CL IV	24	7	0.57	7	1.8
S125	144 145	SS 2 RCCP CL IV	24	37	0.48	37	9.8
S126	145 146	SS 2 RCCP CL IV	24	10	1.00	10	2.4
S126A	146A 146	SS 1 RCCP CL IV	12	10	1.00	10	1.3
S127	146 147	SS 2 RCCP CL IV	24	11	1.00	11	11.1
S128	147 148	SS 2 RCCP CL IV	60	85	0.56	85	166.0
S129	149 148	SS 2 RCCP CL IV "O" RING	12	50	1.00	50	22.3
S130	148 150	SS 2 RCCP CL IV	60	90	0.56	90	183.9
S131	150 152	SS 2 RCCP CL IV	60	68	0.56	68	134.4
S132	151 152	SS 1 RCCP CL IV	12	3	1.00	8	1.1
S542	541 544	SS 2 RCCP CL IV	36	145	1.00	145	118.3
S543	543 544	SS 2 RCCP CL IV "O" RING	12	13	1.00	13	1.7
S544	544 148	SS 2 RCCP CL IV	36	77	1.00	77	138.9
S545	545 148	SS 2 RCCP CL IV "O" RING	24	36	1.00	36	5.3
S546	546 547	SS 1 RCCP CL IV	12	65	1.00	65	8.6
S547	548 547	SS 2 RCCP CL IV	12	50	0.44	50	6.6
S548	547 549	SS 2 RCCP CL IV	12	47	0.45	47	6.2
S549	549 150	SS 2 RCCP CL IV	12	66	1.00	66	8.7
S550	550 551	SS 2 RCCP CL IV	12	50	1.00	50	9.7
S551	551 555	SS 2 RCCP CL IV	12	35	1.00	35	11.2
S552	552 554	SS 1 RCCP CL IV	24	91	0.44	91	57.5
S552A	552A 552	SS 1 RCCP CL IV	12	11	1.00	11	2.6
S553	553 554	SS 2 RCCP CL IV	12	16	1.00	16	4.8
S554	554 555	SS 2 RCCP CL IV	24	34	1.00	34	23.2
S555	556 555	SS 2 RCCP CL IV	12	15	1.00	15	2.9
S556	555 558	SS 2 RCCP CL IV	24	39	1.25	39	29.8
S557	557 558	SS 2 RCCP CL IV "O" RING	12	13	1.00	13	2.5
S557A	557A 557	SS 1 DI CL 52	12	68	1.00	68	11.8
S558	558 560	SS 2 RCCP CL IV	24	85	1.25	85	68.4
S559	559 560	SS 2 RCCP CL IV "O" RING	12	13	1.00	13	2.5
S560	560 138	SS 2 RCCP CL IV	24 EQ. ELL	62	1.25	62	44.8
S561		NOT USED					
S562	562 563	SS 2 RCCP CL IV	12	31	0.45	31	6.7
S563	563 564	SS 2 RCCP CL IV	12	3	1.00	8	2.9
S564	564 554	SS 2 RCCP CL IV	18	115	1.15	115	78.7

MATCH LINE STA. 41+00 SHEET NO. 93

SCALE: 1" = 20'