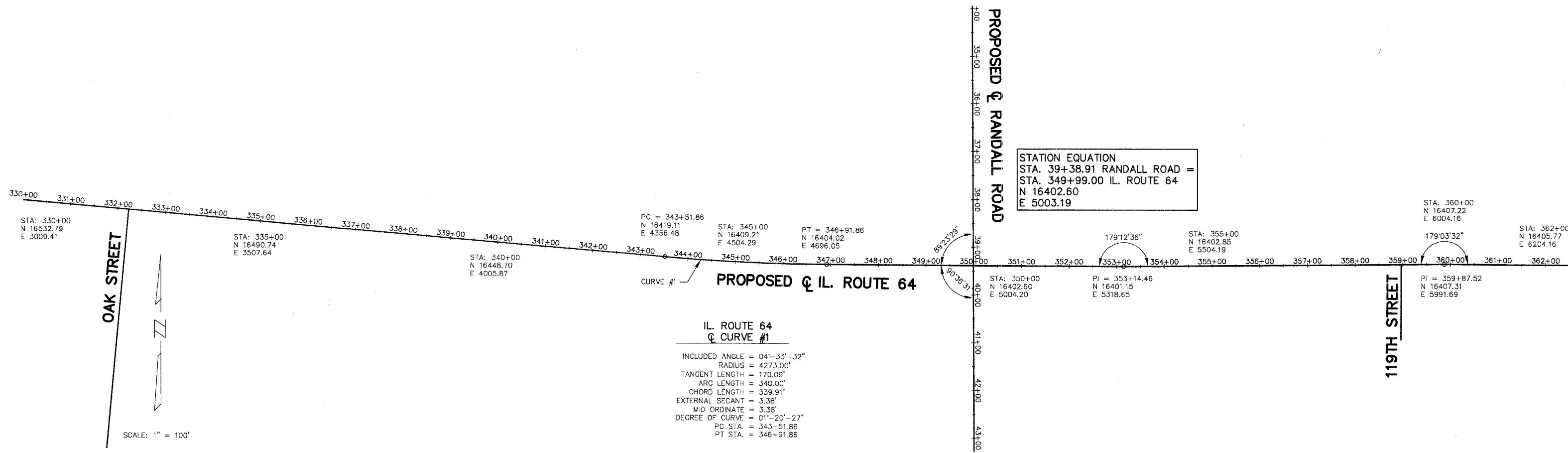


2	COUNTY SECTION	COUNTY	TOTAL SH
ROUTE 336	99-00243-00-PV	KANE	268
CONTRACT NO. 83782			
ALIGNMENT, TIES AND BENCHMARKS			
F.H.W.A. REG.5 ILLINOIS PROJECT F-0336(C)			



**IL. ROUTE 64
Q CURVE #1**

INCLUDED ANGLE = 04°-33'-32"
 RADIUS = 4273.00'
 TANGENT LENGTH = 170.09'
 ARC LENGTH = 340.00'
 CHORD LENGTH = 339.91'
 EXTERNAL SECANT = 3.38'
 MID ORDINATE = 3.38'
 DEGREE OF CURVE = 01°-20'-27"
 PC STA. = 343+51.86
 PT STA. = 346+91.86

- BENCHMARKS:**
1. THE NORTHEAST CORNER OF THE TRAFFIC SIGNAL CONTROLLER CONCRETE PAD LOCATED AT THE NORTHWEST CORNER OF THE INTERSECTION OF RANDALL ROAD AND DEAN STREET. ELEVATION 750.26
 2. THE CHISELED SQUARE ON THE SOUTHEAST CORNER OF THE RAILROAD CROSSING STANDARD LOCATED ON THE NORTH SIDE OF THE RAILROAD TRACKS ON THE WEST SIDE OF RANDALL ROAD NORTH OF IL. ROUTE 64. ELEVATION 745.81
 3. THE CHISELED SQUARE ON THE NORTHWEST CORNER OF THE TELEPHONE BOX CONCRETE PAD LOCATED ON THE EAST RIGHT-OF-WAY LINE OF RANDALL ROAD AT STA. 49+53. ELEVATION 781.62
 4. THE BONNET BOLT ARROW ON THE FIRE HYDRANT LOCATED AT THE NORTHEAST CORNER OF THE INTERSECTION OF RANDALL ROAD AND OAK STREET. ELEVATION 789.56
 5. THE SOUTHWEST BOLT ON THE FIRE HYDRANT LOCATED ON THE SOUTH SIDE OF IL. ROUTE 64 AT NO. 2701 (NORTHEAST CORNER OF FIFTH AVENUE FLOWERS). ELEVATION 790.45
 6. THE BONNET BOLT ARROW ON THE FIRE HYDRANT LOCATED AT THE SOUTHWEST CORNER OF THE INTERSECTION OF IL. ROUTE 64 AND OAK STREET. ELEVATION 789.82
 7. THE TAG BOLT ON THE FIRE HYDRANT LOCATED ON THE SOUTH SIDE OF IL. ROUTE 64 AT NO. 2425 (WEST PROPERTY LINE OF THE DECK YARD). ELEVATION 785.41
 8. THE SOUTHWEST BOLT ON THE FIRE HYDRANT LOCATED ON THE SOUTH SIDE OF IL. ROUTE 64 AT NO. 1915 (McDONALDS). ELEVATION 775.51

