

DRAINAGE STRUCTURE TABLE STA. 10+50 TO STA. 15+50

| NO. | STA. | OFFSET | STRUCTURE TYPE/SIZE | FRAME & GRATE | RIM ELEV EPI/FR | INVERT (N) | INVERT (S) | INVERT (E) | INVERT (W) |
|-----|----------|-----------|---------------------|---------------|-----------------|------------|------------|------------|------------|
| 5 | 10+90 | 82' RT | 24 EQ ELL | GRATE | 759.80 | | | | |
| 6 | 11+10 | 96' RT | A 5 | 1C | 763.50 | 759.56 | 757.13 | | |
| 7 | 11+95 | 71' RT | 24 EQ ELL | GRATE | | 756.25 | | | |
| 8 | 10+96 | 63' LT | 18 EQ ELL | GRATE | 757.20 | | | | |
| 9 | 11+05 | 63' LT | A 5 | 1C | 759.80 | 756.92 | 754.55 | | |
| 10 | 11+50 | 63' LT | A 5 | 1C | 755.75 | 753.29 | 759.29 | | |
| 10A | 11+70 | 49' LT | A 4 | 1C | 761.40 | 752.67 | 752.67 | | |
| 11 | 12+00 | 32' RT | A 4 | 24 | 764.20 | | | 754.40 | |
| 12 | 12+00 | 49' LT | A 4 | 1C | 760.70 | 752.34 | 752.24 | | 754.24 |
| 13 | 12+00 | 32' RT | | 24 | 764.20 | | | | 760.20 |
| 14 | 12+00 | 55' RT | | 12 | | | | | 760.00 |
| 15 | NOT USED | | | | | | | | |
| 18 | 13+50 | 62.5' RT | | 24 | GRATE | 752.75 | | | |
| 17 | 13+85 | 65' RT | | 24 | GRATE | | 752.40 | | |
| 18 | NOT USED | | | | | | | | |
| 19 | 14+50 | 32' LT | A 4 | 24 | 753.45 | 748.95 | | | |
| 19A | 14+50 | 47' LT | A 4 | 1C | 754.00 | 747.86 | 747.76 | | 748.81 |
| 20 | 14+50 | 42.67' RT | | 24 | 753.18 | | | | 750.52 |
| 21 | 14+50 | 58' RT | | 12 | | | | | 750.45 |
| 22 | NOT USED | | | | | | | | |
| 23 | NOT USED | | | | | | | | |

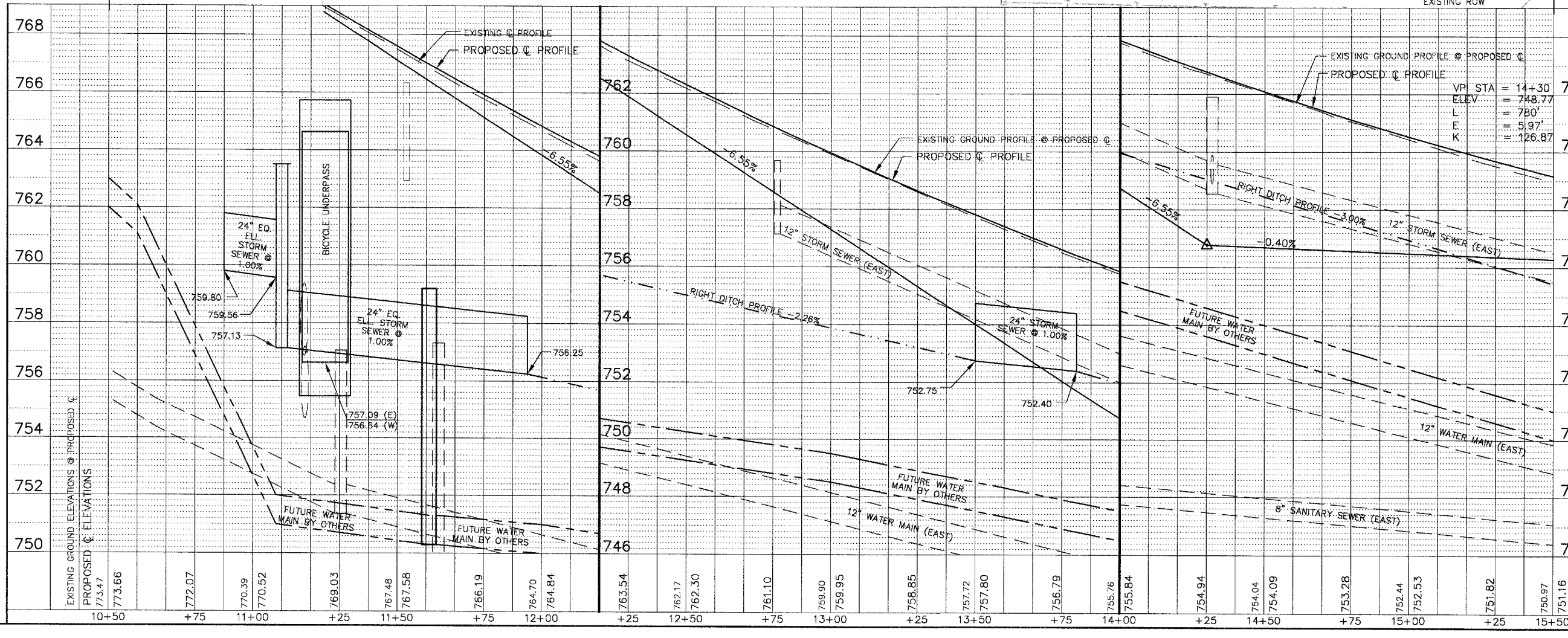
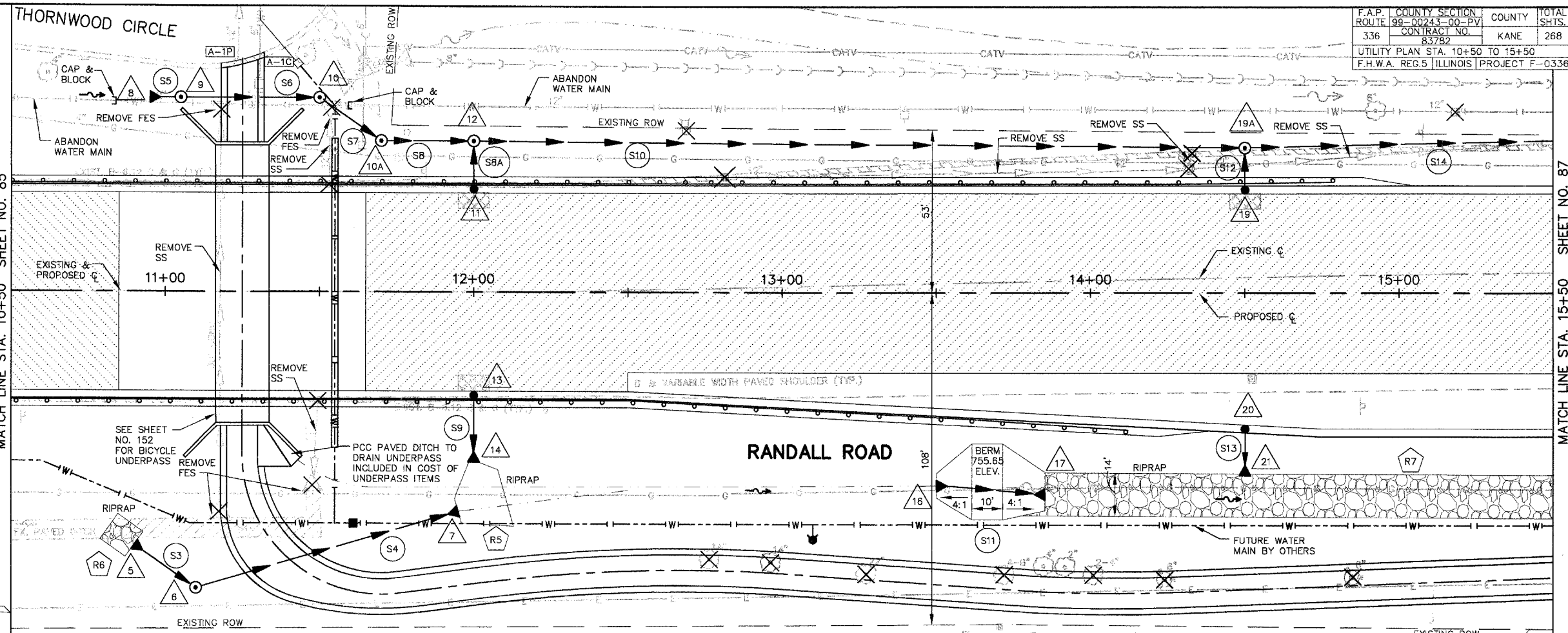
ROCK OUTLET PROTECTION TABLE STA. 10+50 TO STA. 15+50

| NO. | ASSOCIATED STRUCTURE OUTLET NO. | ROCK GRADATION | DEPTH (IN.) | WIDTH 1 (FT.) | WIDTH 2 (FT.) | LENGTH (FT.) | AREA (SQ. YD.) |
|-----|---------------------------------|----------------|-------------|---------------|---------------|--------------|----------------|
| R4 | NOT USED | | | | | | |
| R5 | 14 | 4 | 20 | 19 (Avg) | 10 | 19 (Avg) | 32 |
| R6 | 5 | 4 | 20 | 10 | 10 | 10 | 12 |
| R7 | 17 | 4 | 20 | 14 | 14 | 215 | 335 |

* MEET EXISTING PAVED DITCH

PIPE TABLE STA. 10+50 TO STA. 15+50

| PIPE NO. | LOCATION | | DESCRIPTION | DIA (IN) | L (FT) | S (%) | TRENCH BACKFILL | |
|----------|------------|----------|--------------|-----------|--------|-------|-----------------|----------|
| | FROM STR # | TO STR # | | | | | L (FT) | VOL (CY) |
| S3 | 5 | 6 | SS 1 RCCP IV | 24 EQ ELL | 18 | 1.00 | | |
| S4 | 6 | 7 | SS 1 RCCP IV | 24 EQ ELL | 82 | 1.00 | 28 | 4.1 |
| S5 | 8 | 9 | SS 1 RCCP IV | 18 EQ ELL | 4 | 2.80 | | |
| S6 | 9 | 10 | SS 1 RCCP IV | 18 EQ ELL | 45 | 2.80 | 18 | 11.6 |
| S7 | 10 | 10A | SS 2 RCCP IV | 18 EQ ELL | 24 | 1.75 | | |
| S8 | 10A | 12 | SS 2 RCCP IV | 18 | 30 | 1.75 | | |
| S8A | 11 | 12 | SS 2 RCCP IV | 12 | 16 | 1.00 | 2 | 2.5 |
| S9 | 13 | 14 | SS 1 RCCP IV | 12 | 16 | 1.00 | 2 | 0.8 |
| S10 | 12 | 19A | SS 2 RCCP IV | 18 | 250 | 1.75 | | |
| S11 | 16 | 17 | SS 1 RCCP IV | 24 | 23 | 1.00 | | |
| S12 | 19 | 19A | SS 2 RCCP IV | 12 | 14 | 1.00 | 2 | 1.3 |
| S13 | 20 | 21 | SS 1 RCCP IV | 12 | 9 | 0.47 | 2 | 0.5 |
| S14 | 19A | 25 | SS 2 RCCP IV | 18 | 150 | 2.75 | | |



MATCH LINE STA. 10+50 SHEET NO. 85

MATCH LINE STA. 15+50 SHEET NO. 87