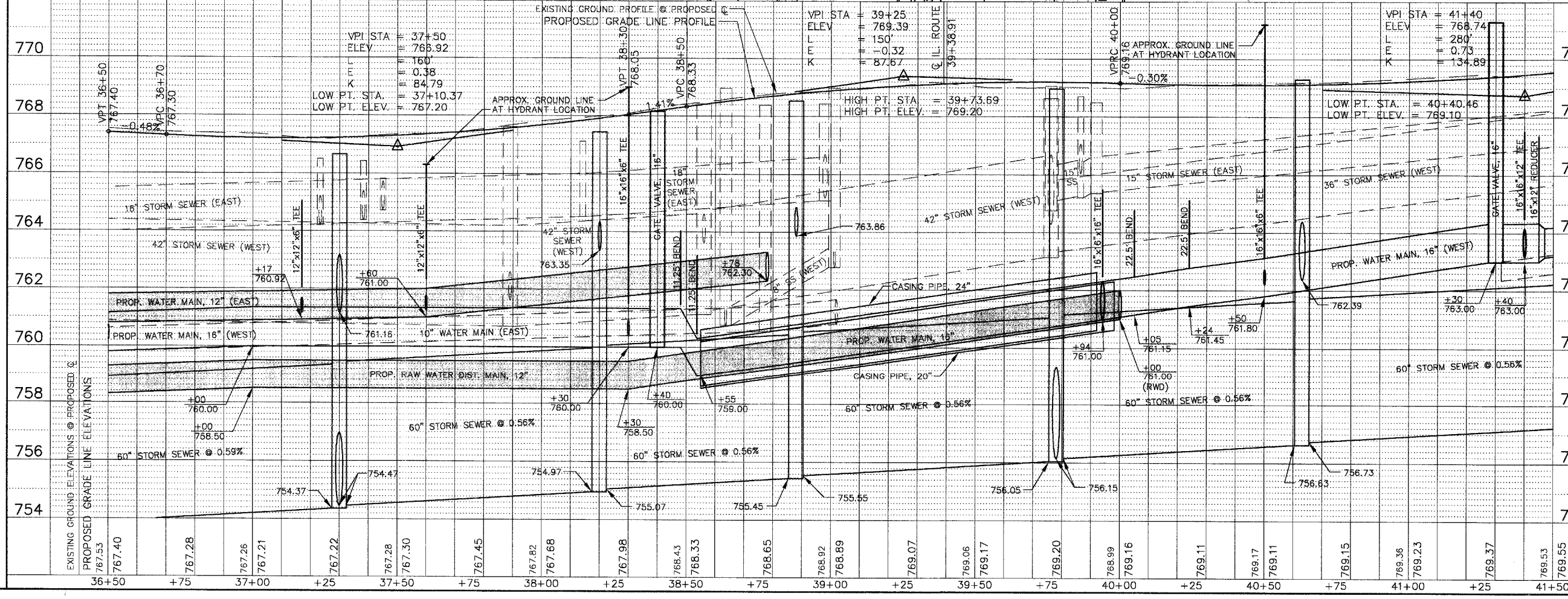
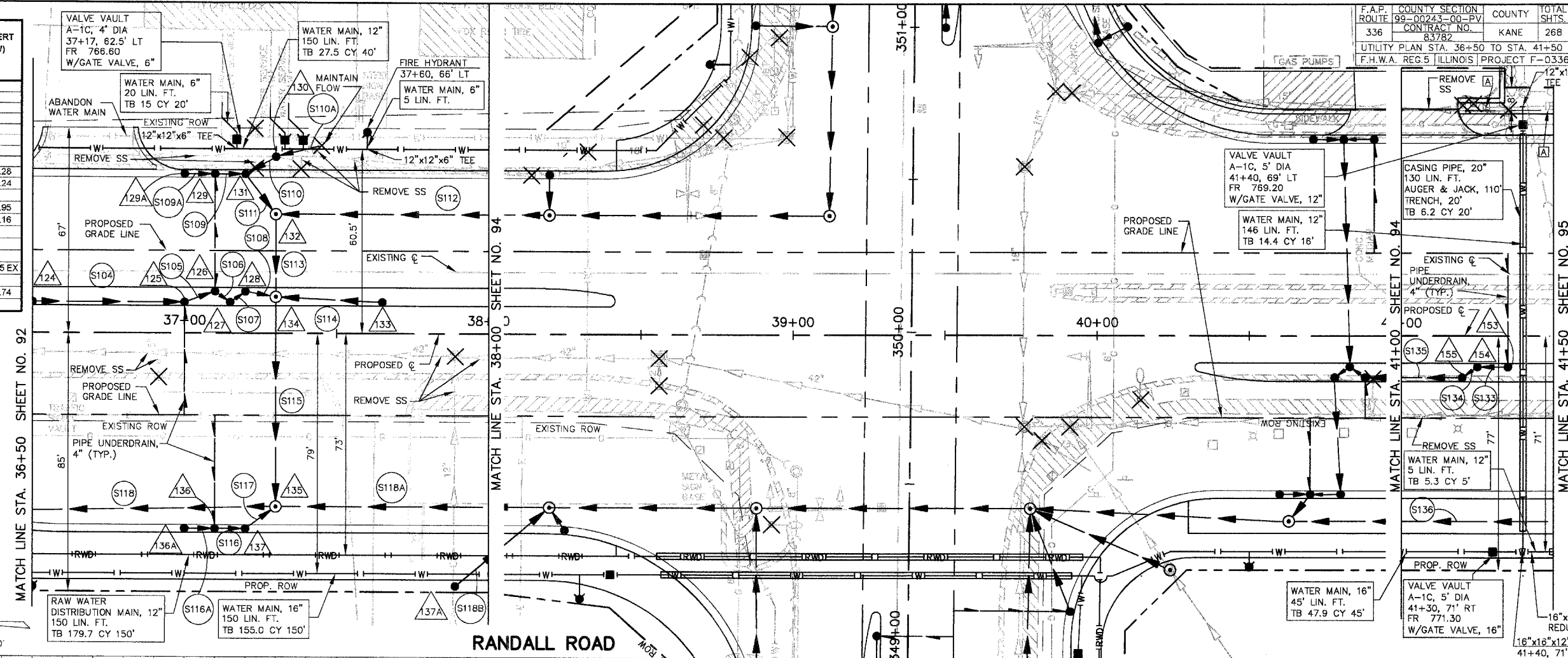


DRAINAGE STRUCTURE TABLE STA. 36+50 TO STA. 41+50

NO.	STA.	OFFSET	STRUCTURE TYPE/SIZE				FRAME & GRATE	RIM ELEV EP/FR	INVERT (N)	INVERT (S)	INVERT (E)	INVERT (W)
			MH	CB	INL	OTHER						
124	36+50	9' LT	A 4				11V 766.74	762.24	762.74			
125	37+00	9' LT	A 4				11V 766.55	762.03	762.14			
126	37+10	15' LT	A 4				11V 767.02	761.86	761.93			
127	37+15	9' LT	A 5				11V 766.61	760.69	760.76			
128	37+20	15' LT	A 5				11V 767.03	760.59	760.59			
129	37+10	51' LT	A 4				24 766.78	762.86	762.78			
129A	37+00	51' LT	A 4				24 766.79	762.98	762.98			
130	37+30	58' LT	C 2				1P 765.50	761.50	763.30			
131	37+20	51' LT	A 5				24 765.79	762.66	761.39		760.28	
132	37+30	39' LT	A 5				1C 767.05	755.34	760.12		755.24	
133	37+65	9' LT	A 4				11V 767.13	763.13				
134	37+30	12' LT	A 5				1C 767.32	760.48	762.78	755.05	754.95	
135	37+30	57' RT	A 7				1C 766.65	754.37	754.47	754.47	761.16	
136	37+10	63' RT	A 4				24 766.48	762.58	762.48			
136A	37+00	63' RT	A 4				24 766.49	762.68	762.68			
137	37+20	63' RT	A 5				24 766.49	762.38		761.28		
137A	37+89	83' RT	C 2				1C 768.70	755.80		761.95 EX		
153	41+35	9' RT	A 4				11V 769.00	765.00				
154	41+25	9' RT	A 5				11V 769.01	764.90			763.74	
155	41+20	15' RT	A 5				11V 769.22	763.57	763.67			

PIPE TABLE STA. 36+50 TO STA. 41+50

PIPE NO.	PIPE LOCATION		DESCRIPTION	DIA (IN)	L (FT)	S (%)	TRENCH BACKFILL	
	FROM STR #	TO STR #					L (FT)	VOL (CY)
S104	124	125	SS 2 RCCP CL IV	12	50	1.00	50	8.8
S105	125	126	SS 2 RCCP CL IV	12	11	1.00	11	1.5
S106	126	127	SS 2 RCCP CL IV	12	7	1.00	7	0.9
S107	127	128	SS 2 RCCP CL IV	24	7	1.00	7	1.9
S108	128	134	SS 2 RCCP CL IV	24	10	1.00	10	3.2
S109	129	131	SS 1 DI CL 52	12	10	1.00	10	1.3
S109A	129A	129	SS 1 DI CL 52	12	10	1.00	10	1.3
S110	130	131	SS 2 DI CL 52	12	11	1.00	4	1.3
S110A	EX	130	SS 1 PVC	6	20	7.10		
S111	131	132	SS 2 RCCP CL IV	24	16	1.00	16	5.6
S112	139	132	SS 2 RCCP CL IV	30	90	0.70	90	144.7
S113	132	134	SS 2 RCCP CL IV	30	27	0.70	27	44.6
S114	133	134	SS 2 RCCP CL IV	12	35	1.00	35	4.6
S115	134	135	SS 2 RCCP CL IV	30	69	0.70	69	120.3
S116	136	137	SS 1 DI CL 52	12	10	1.00	10	1.3
S116A	136A	136	SS 1 DI CL 52	12	10	1.00	10	1.3
S117	137	135	SS 2 RCCP CL IV	24	12	1.00	12	1.8
S118	135	123	SS 2 RCCP CL IV	60	350	0.59	350	915.1
S118A	152	135	SS 2 RCCP CL IV	60	90	0.56	90	165.9
S118B	137A	152	SS 2 RCCP CL IV	12	40	1.00	40	52.2
S133	153	154	SS 1 RCCP CL IV	12	10	1.00	10	1.3
S134	154	155	SS 2 RCCP CL IV	24	7	1.00	7	1.0
S135	155	143	SS 2 RCCP CL IV	24	32	1.00	32	6.6
S136	161	147	SS 2 RCCP CL IV	60	107	0.56	107	304.2



F.A.P. ROUTE	99-00243-00-PV	COUNTY	KANE	TOTALS	268
CONTRACT NO.	83782	UTILITY PLAN STA.	36+50 TO STA. 41+50		
F.H.W.A. REG. 5	ILLINOIS PROJECT F-0336(C)				

SCALE: 1" = 20'