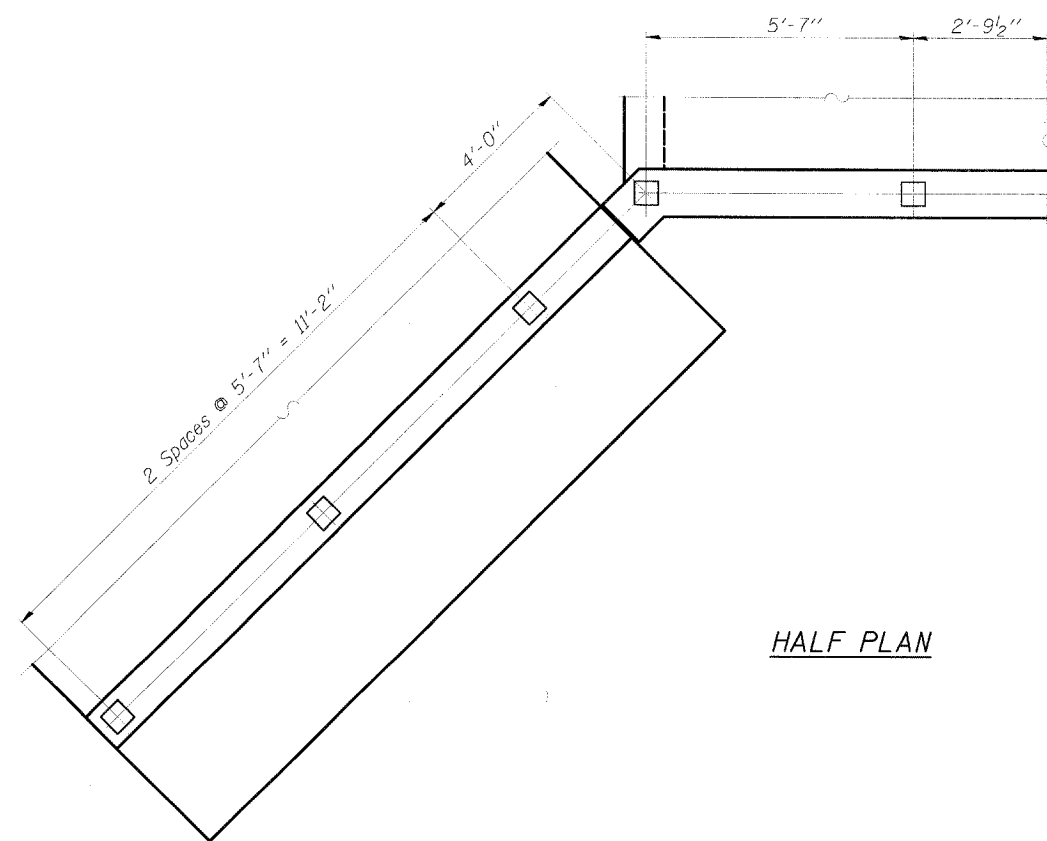
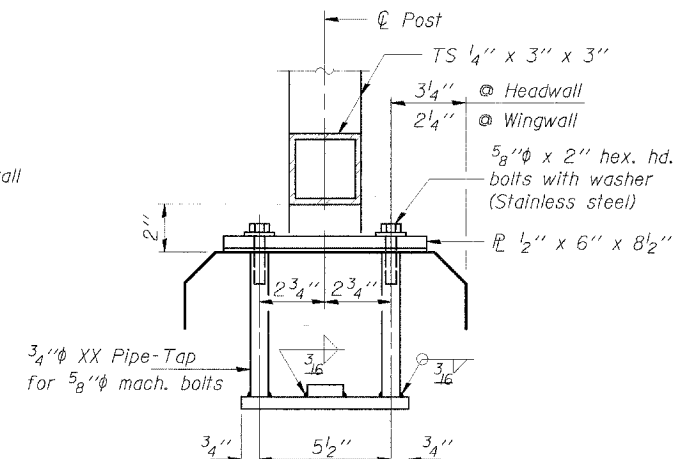
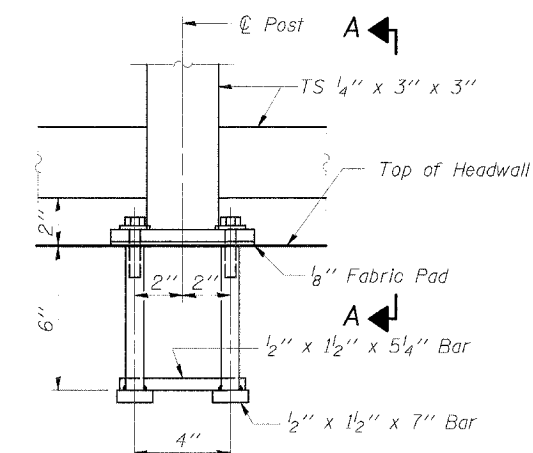
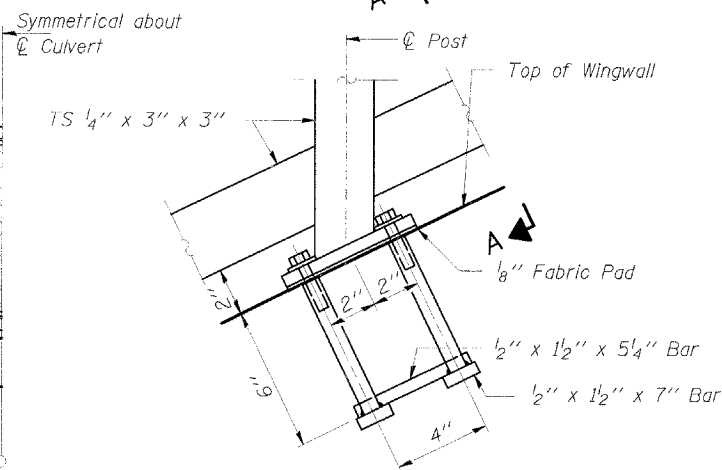


ELEVATION

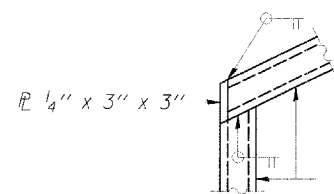


HALF PLAN

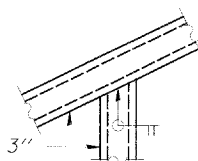


VIEW A-A

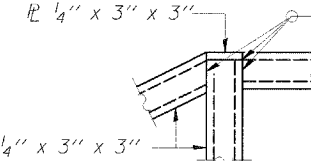
ANCHOR BOLT DETAILS



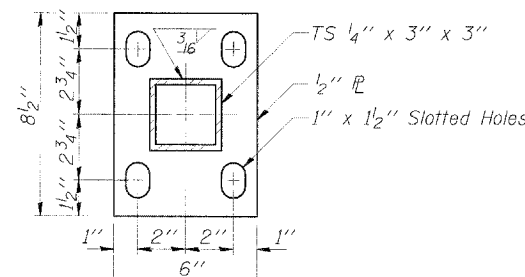
DETAIL A



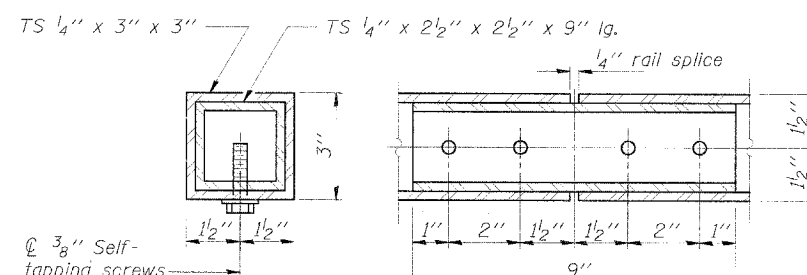
DETAIL B



DETAIL C



BASE PL



RAIL SPLICE

NOTES

- Railing shall be in accordance with Section 509 of the Standard Specifications, except as noted, and will be paid for at the Contract Unit Price per foot for Pedestrian Railing.
- The 9 gauge fabric ties shall be in accordance with Article 1006.27(d) of the Standard Specifications.
- Installation of the chain link fabric shall be in accordance with Section 664 of the Standard Specifications.
- Hollow structural steel tubing shall conform to the requirements of ASTM designation A 500, Grade B, structural steel tubing.
- Stretcher bars shall be used at all four sides of each panel.
- The chain link fabric shall conform to the requirements of Article 706.27(a)(1)(a) or (b) or (c) of the Standard Specifications.
- All joints in rail shall be spliced per detail.
- All posts, railing, splices, anchor devices, and plates shall be galvanized after shop fabrication in accordance with AASHTO M-111 and ASTM A-385.
- All bolts, nuts and washers shall be galvanized in accordance with AASHTO M-232.
- Vent holes for galvanizing shall be placed in the posts and rails at locations that will not allow the accumulation of moisture in the members.

BILL OF MATERIAL

Item	Unit	Quantity
Pedestrian Railing	Foot	97

HLR
 Rice, Berry and Associates
 A Division of Hempron,
 Lenzini and Renwick, Inc.
 Civil & Structural Engineers
 801 S. Durkin Drive
 Springfield, Illinois 62704
 217-546-3400
 P.O. Box 1036
 DuQuoin, Illinois 62832
 618-790-4637
 Account Number
 03-05-0181-1
 Date: 6-09-04
 DESIGNED: P.S.L. CHECKED: G.L.B. DRAWN: D.S.S.

PEDESTRIAN RAILING
SECTION 99-00243-00-PV
BIKE PATH UNDER RANDALL ROAD
KANE COUNTY
STATION 11+25