

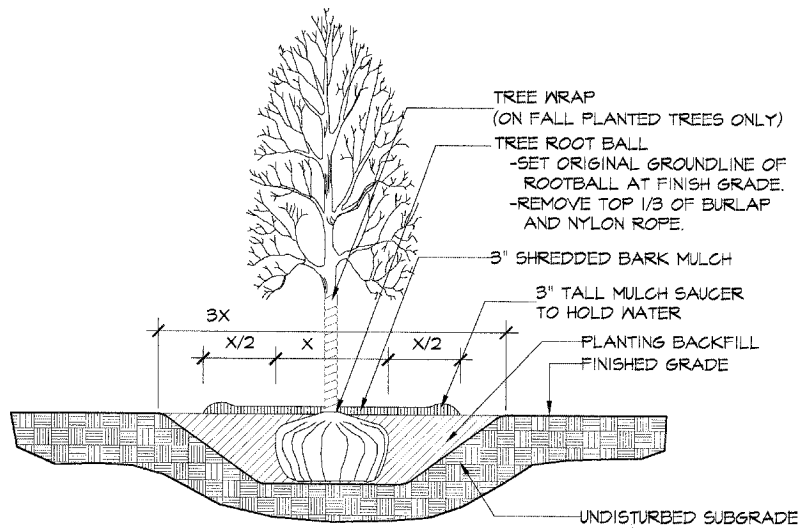
General Landscape Notes

- BEFORE STARTING ANY EXCAVATION, THE CONTRACTOR SHALL CALL JULIE AT (800) 892-0123 FOR FIELD LOCATIONS OF BURIED UTILITIES INCLUDING ELECTRIC, TELEPHONE, AND GAS FACILITIES. (48 HOUR NOTIFICATION IS REQUIRED)
- ALL STATIONS INDICATED ON PLANS ARE FROM THE PROPOSED RANDALL ROAD LAYOUT UNLESS OTHERWISE NOTED.
- THE CONTRACTOR SHALL TAKE ALL NECESSARY SAFETY PRECAUTIONS TO PROTECT ADJUTING PROPERTY, UTILITIES PEDESTRIANS, AND VEHICULAR TRAFFIC.
- THE CONTRACTOR'S VEHICLES SHALL ALWAYS MOVE WITH AND NOT AGAINST OR ACROSS THE FLOW OF TRAFFIC. THESE VEHICLES SHALL ENTER AND LEAVE WORK AREAS IN A MANNER WHICH WILL NOT BE HAZARDOUS TO OR INTERFERE WITH NORMAL TRAFFIC AND SHALL NOT PARK OR STOP EXCEPT WITHIN DESIGNATED WORK AREAS. PERSONAL VEHICLES ARE NOT PERMITTED TO PARK WITHIN THE RIGHT-OF-WAY UNLESS SPECIFICALLY AUTHORIZED BY THE ENGINEER.
- ALL TEMPORARY REGULATORY, WARNING AND GUIDE SIGNS WITHIN THE PROPOSED IMPROVEMENT SHALL BE RELOCATED BY THE CONTRACTOR AS DIRECTED BY THE ENGINEER.
- THE CONTRACTOR SHALL MAINTAIN ACCESS TO CROSS STREETS AND ENTRANCES AT ALL TIMES. TEMPORARY SINGLE LANE CLOSURES ARE PERMISSIBLE WITH ENGINEER APPROVAL ONLY. TRAFFIC STAGING PLAN SHALL BE SUBMITTED TO ENGINEER FOR APPROVAL.
- THE CONTRACTOR SHALL BE RESPONSIBLE FOR THE PROTECTION OF ANY UNDERGROUND OR ABOVE GROUND UTILITIES WITHIN THE PROJECT LIMITS WHETHER OR NOT THE UTILITIES ARE SHOWN ON THE PLANS. ANY UTILITY DAMAGED DURING CONSTRUCTION SHALL BE REPAIRED OR REPLACED BY THE CONTRACTOR AT HIS/HER OWN EXPENSE.
- THE CONTRACTOR SHALL MAINTAIN PROPER AND ADEQUATE SURFACE DRAINAGE FOR THE ENTIRE LIMITS OF CONSTRUCTION THROUGHOUT THE ENTIRE CONSTRUCTION PERIOD.
- THE CONTRACTOR SHALL PROTECT EXISTING AND NEW UTILITIES BY METHODS APPROVED BY THE ENGINEER. THE CONTRACTOR SHALL BRACE AND SUPPORT THE UTILITIES PROPERLY TO PREVENT SETTLEMENT, DISPLACEMENT OR CHANGE TO THE UTILITIES. THE PROTECTION OF THE UTILITIES AS SPECIFIED HEREIN WILL NOT BE PAID FOR SEPARATELY, BUT THE COST THEREOF SHALL BE CONSIDERED INCIDENTAL TO THE CONTRACT.
- THE ENGINEER SHALL DETERMINE THE LIMITS OF ALL ITEMS TO BE REMOVED OR REPLACED AND FINAL QUANTITIES SHALL BE DETERMINED FROM FIELD MEASUREMENTS OF ACTUAL WORK AS DESIGNATED BY THE ENGINEER.
- THE CONTRACTOR SHALL SUBMIT A CONSTRUCTION SCHEDULE FOR APPROVAL BY THE ENGINEER PRIOR TO CONSTRUCTION. THE SCHEDULE SHALL INCLUDE THE PERIODS OF TIME IN WHICH THE WORK ITEMS ARE TO BE COMPLETED. ALL WORK BEGUN DURING A CONSTRUCTION SEASON MUST BE COMPLETED PRIOR TO THE END OF THAT SEASON.
- THE LOCATION OF ALL PLANT MATERIAL SHALL BE STAKED BY THE CONTRACTOR FOR APPROVAL BY THE ENGINEER IN FIELD PRIOR TO INSTALLATION OF ANY PLANT MATERIAL. INDIVIDUAL TREES SHALL BE STAKED WITH IDENTITIES WRITTEN ON STAKES. SHRUB AND PERENNIAL BEDS SHALL BE OUTLINED WITH STAKES AND PAINTED LINES.
- THE CONTRACTOR SHALL DISCUSS STAGING AREA OPTIONS WITH ENGINEER PRIOR TO CONSTRUCTION.
- THE CONTRACTOR SHALL OBTAIN ALL NECESSARY PERMITS PRIOR TO COMMENCING CONSTRUCTION. THE COSTS SHALL BE CONSIDERED INCIDENTAL TO THE CONTRACT.
- THE CONTRACTOR IS RESPONSIBLE FOR THE COST OF REPLACEMENT OF ANY BENCH MONUMENT DAMAGED OR DESTROYED DURING CONSTRUCTION.
- THE CONTRACTOR SHALL BE RESPONSIBLE FOR THE PROTECTION OF ANY EXISTING ITEMS NOT SCHEDULED TO BE ADJUSTED, RELOCATED, OR REMOVED INCLUDING CURBS, FENCES, PAVEMENTS, UTILITIES, AND EXISTING VEGETATION INTENDED TO REMAIN. ANY ITEMS DAMAGED DURING CONSTRUCTION SHALL BE REPAIRED OR REPLACED BY THE CONTRACTOR AT HIS/HER OWN EXPENSE.
- THE LANDSCAPE CONTRACTOR SHALL COORDINATE WORK WITH ALL OTHER DISCIPLINES OF WORK AS DESCRIBED ON THE DRAWINGS AND AS OUTLINED IN THE SPECIFICATIONS AND PRIMARILY WITH THE IRRIGATION SUBCONTRACTOR.

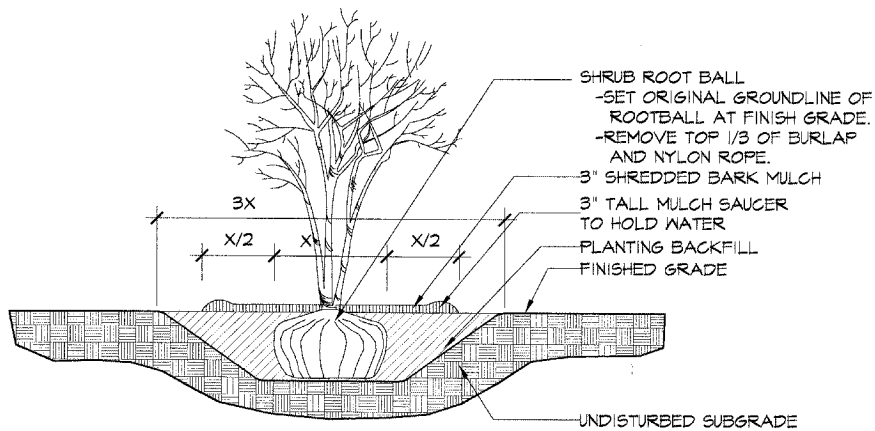
Schedule of Plant Material

Botanical name	Common name	Size	Spacing	TOTAL
SHADE TREES				
<i>Celtis occidentalis</i> 'Prairie Pride'	Prairie Pride Hackberry	3" cal.	as shown	8
<i>Fraxinus americana</i> 'Autumn Applause'	Autumn Applause White Ash	3" cal.	as shown	6
<i>Quercus biloba</i> 'Autumn Gold'	Autumn Gold Maidenhair Tree	3" cal.	as shown	1
<i>Gleditsia triacanthos</i> var. <i>inermis</i> 'Shademaster'	Shademaster Honeylocust	3" cal.	as shown	6
<i>Gymnocladus dioica</i>	Kentucky Coffeetree	3" cal.	as shown	5
<i>Quercus bicolor</i>	Swamp White Oak	3" cal.	as shown	4
<i>Quercus robur</i>	English Oak	3" cal.	as shown	4
<i>Quercus rubra</i>	Red Oak	3" cal.	as shown	10
<i>Ulmus</i> x 'Morton Glossy'	Triumph Elm	3" cal.	as shown	6
<i>Ulmus</i> x 'Morton Stalwart'	Commendation Elm	3" cal.	as shown	4
EVERGREEN TREES				
<i>Pinus nigra</i>	Austrian Pine	6' ht.	as shown	4
<i>Picea pungens</i>	Colorado Green Spruce	6' ht.	as shown	4
<i>Picea pungens</i> 'Glauca'	Colorado Blue Spruce	6' ht.	as shown	5
SHRUBS				
<i>Aronia melanocarpa</i> 'Morton'	Irroquois Beauty Black Chokeberry	30" ht.	36" o.c.	108
<i>Berberis thunbergii</i> 'Ballone'	Ruby Caravel Barberrry	24" ht.	24" o.c.	224
<i>Kerria japonica</i>	Japanese Kerria	30" ht.	36" o.c.	48
<i>Nepeta x faassenii</i> 'Walkers Low'	Walkers Low Catmint	24" ht.	18" o.c.	61
<i>Rhus aromatica</i> 'Gro-Lo'	Gro-Lo Sumac	18" ht.	36" o.c.	108
<i>Rosa rugosa</i> 'Foxi Pavement'	Pink Rugosa Rose	18" ht.	30" o.c.	28
<i>Rosa rugosa</i> 'Scarlet Pavement'	Scarlet Rugosa Rose	18" ht.	30" o.c.	26
<i>Rosa rugosa</i> 'Snow Pavement'	White Rugosa Rose	18" ht.	30" o.c.	28
<i>Spiraea x bumalda</i> 'Magic Carpet'	Magic Carpet Spiraea	24" ht.	24" o.c.	161
PERENNIALS				
<i>Allium schoenoprasum</i> 'Forescate'	Ornamental Onion	1 gal.	12" o.c.	71
<i>Allium tanguticum</i> 'Summer Beauty'	Globe Lily	1 gal.	12" o.c.	83
<i>Asclepias tuberosa</i>	Butterfly weed	1 gal.	18" o.c.	61
<i>Echinacea pallida</i>	Purple Coneflower	1 gal.	18" o.c.	114
<i>Hemerocallis</i> 'Chicago Apache'	Chicago Apache Daylily	1 gal.	15" o.c.	117
<i>Hemerocallis</i> 'Happy Returns'	Happy Returns Daylily	1 gal.	15" o.c.	124
<i>Rudbeckia hirta</i>	Black-eyed Susan	1 gal.	18" o.c.	114
<i>Sedum</i> 'Autumn Joy'	Autumn Joy Sedum	1 gal.	18" o.c.	68
<i>Solidago nemoralis</i>	Goldensrod	1 gal.	24" o.c.	131
GRASSES				
<i>Bouteloua curtipendula</i>	Side Oats Gramma	1 gal.	24" o.c.	274
<i>Carex muskingumensis</i>	Palm Sedge	1 gal.	18" o.c.	58
<i>Carex muskingumensis</i> 'Oehme'	Variegated Palm Sedge	1 gal.	18" o.c.	34
<i>Miscanthus sinensis</i> 'Graziella'	Japanese Silver Grass	1 gal.	36" o.c.	18
<i>Miscanthus sinensis</i> 'Strictus'	Porcupine Grass	1 gal.	36" o.c.	70
<i>Molinia arundinacea</i> 'Transparent'	Tall Moor Grass	1 gal.	36" o.c.	34
<i>Molinia caerulea</i> 'Moarhexe'	Purple Moor Grass	1 gal.	30" o.c.	77
<i>Panicum virgatum</i> 'Heavy Metal'	Heavy Metal Switch Grass	1 gal.	24" o.c.	47
<i>Schizachyrium scoparium</i>	Little Bluestem	1 gal.	24" o.c.	80
<i>Sesleria autumnalis</i>	Autumn Moor Grass	1 gal.	24" o.c.	112
<i>Sorghastrum nutans</i>	Indian Grass	1 gal.	36" o.c.	24
<i>Sporobolus heterolepis</i>	Prairie Dropseed	1 gal.	30" o.c.	241
VINES AND BULBS				
<i>Narcissus</i> spp.	* Mixed Daffodils	14+ cm	*** 15" o.c.	3,760

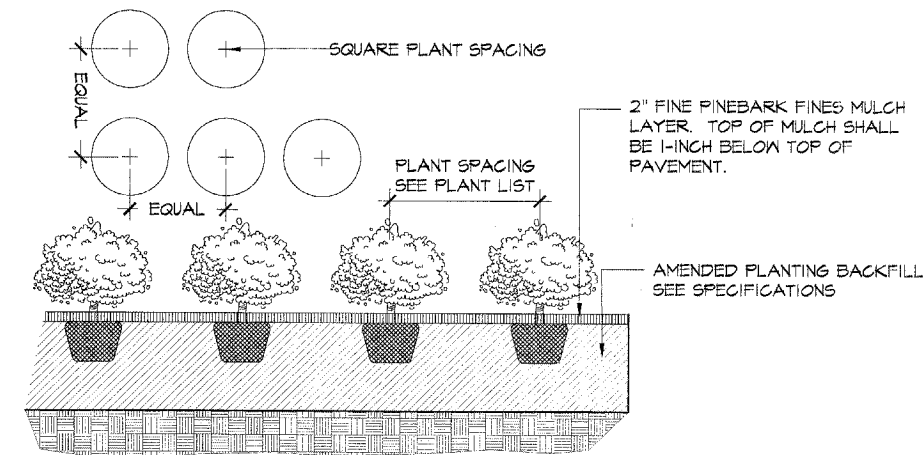
* Daffodil Mix shall contain an equal blending of a minimum of 5 varieties of 12" to 18" Ht. White and Yellow Daffodils.
 *** Daffodil Mix planting locations shall be obtained from the Landscape Architect prior to any planting.



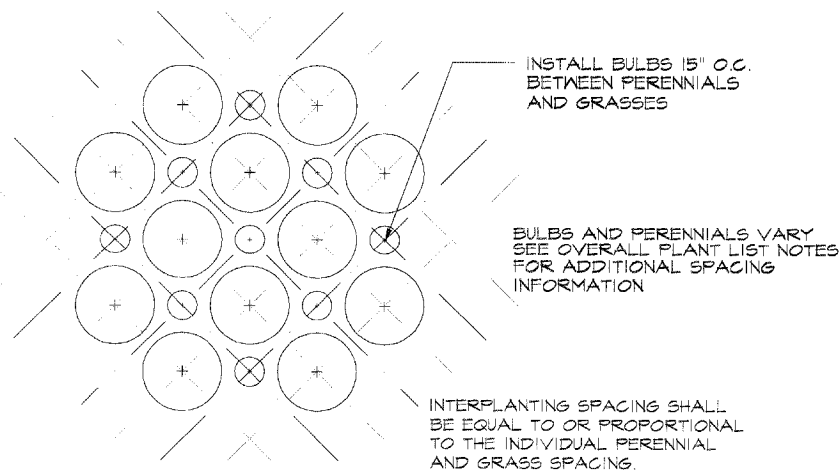
1 SHADE TREE PLANTING DETAIL
No Scale



2 SHRUB PLANTING DETAIL
No Scale



3 PERENNIAL / GROUND COVER PLANTING DETAIL
No Scale



4 INTERPLANTING DETAIL
No Scale

HAYDEN BULIN LARSON

HAYDEN BULIN LARSON
Design Group Ltd.

750 North Franklin Street, Suite 205
Chicago, Illinois 60610
312.943.3234 FAX 312.943.3302

RANDALL ROAD MEDIANS

City of St. Charles
St. Charles, Illinois

HBL Submittal: Dec. 23, 2004
HBL Project No.: 04-061.01
CADD File: h-details.dwg
Drawn By: J.E.
Approved By: J.E.
Revisions:

LANDSCAPE DETAILS AND GENERAL NOTES

Drawing Sheet
L-1.9 190