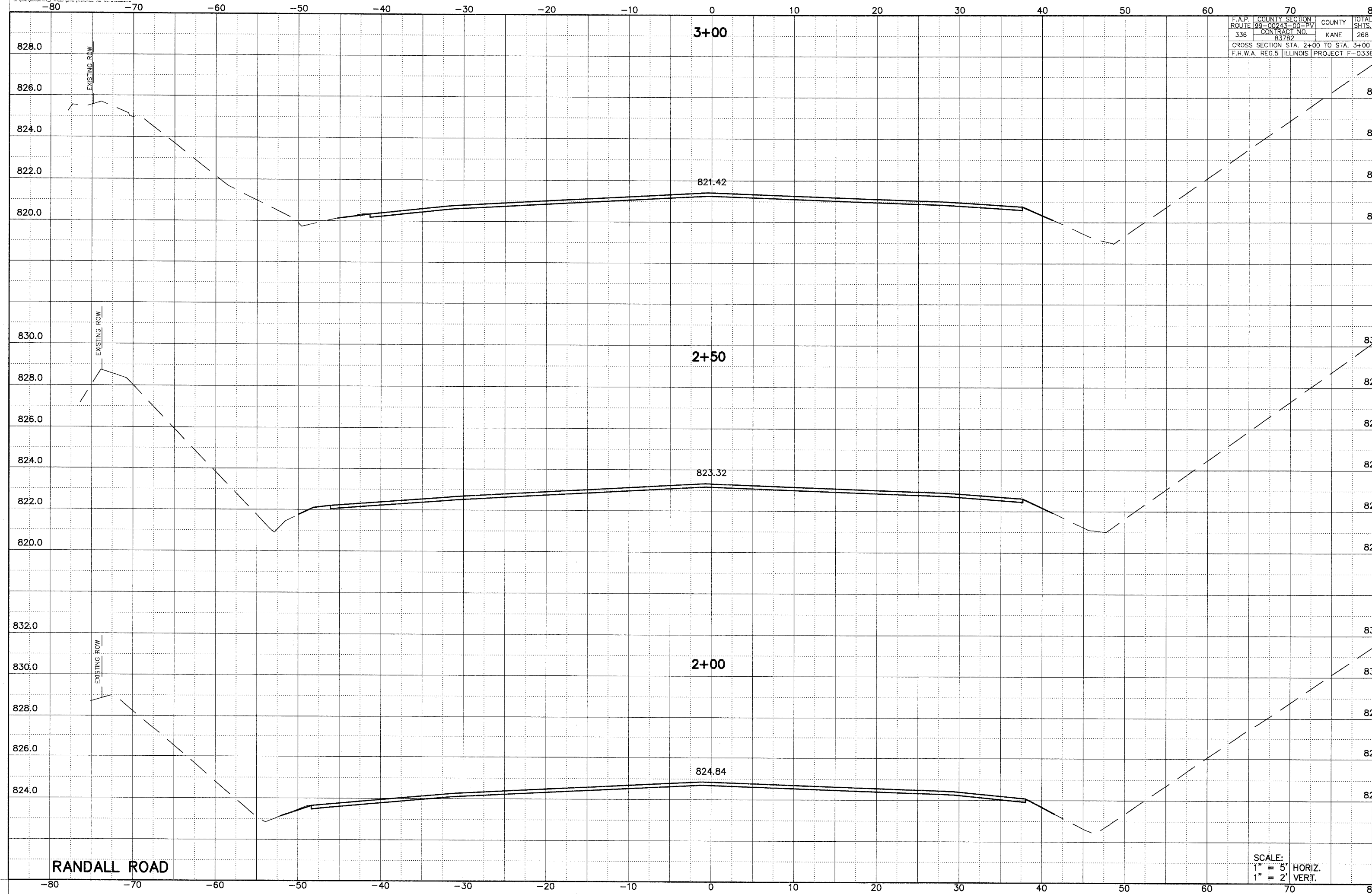


F.A.P.	COUNTY	SECTION	TOTAL
ROUTE 336	99-00243-00-PV	KANE	268
CONTRACT NO.	83782		
CROSS SECTION STA. 2+00 TO STA. 3+00			
F.H.W.A. REG.5 ILLINOIS PROJECT F-0336			



**RANDALL ROAD**

SCALE:  
 1" = 5' HORIZ.  
 1" = 2' VERT.