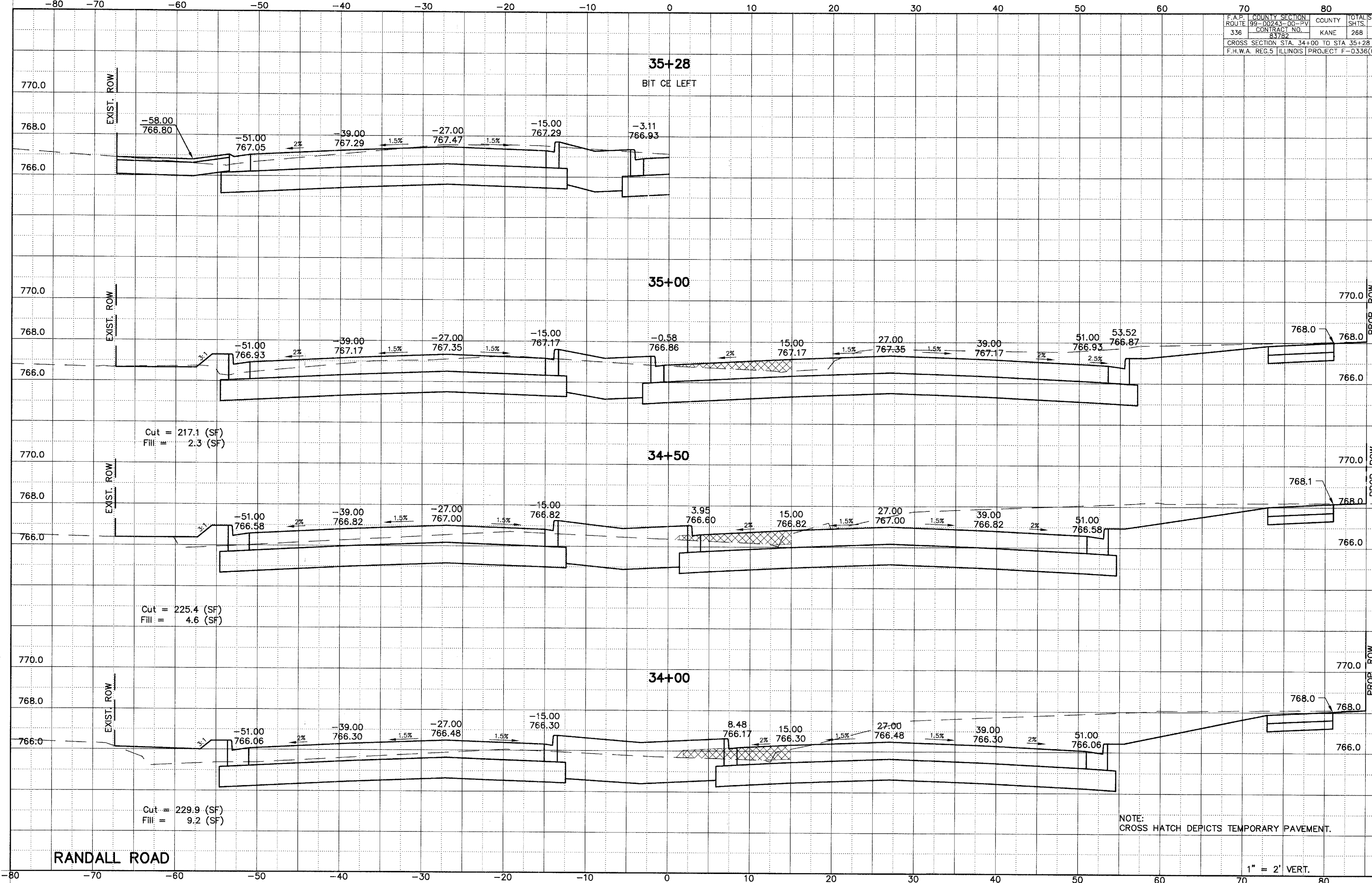


F.A.P. ROUTE	COUNTY SECTION	COUNTY	TOTAL SHEETS
336	99-00243-00-PV	KANE	268
CONTRACT NO. 83782			
CROSS SECTION STA. 34+00 TO STA 35+28			
F.H.W.A. REG.5 ILLINOIS PROJECT F-0336(00)			



Cut = 217.1 (SF)
Fill = 2.3 (SF)

Cut = 225.4 (SF)
Fill = 4.6 (SF)

Cut = 229.9 (SF)
Fill = 9.2 (SF)

NOTE:
CROSS HATCH DEPICTS TEMPORARY PAVEMENT.

RANDALL ROAD

1" = 2' VERT.