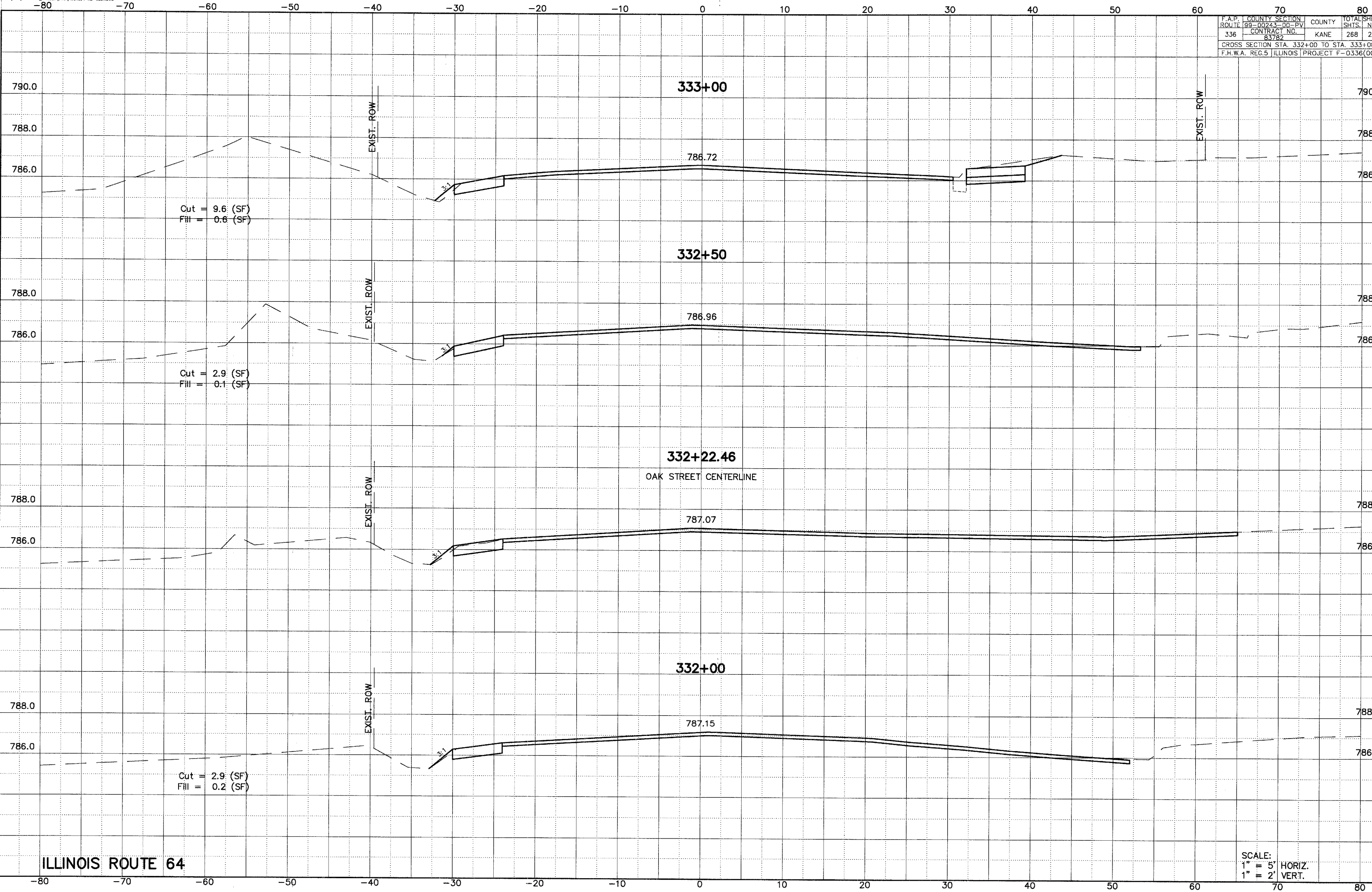


F.A.P.	COUNTY SECTION	COUNTY	TOTAL SHEETS
ROUTE 99-00243-00-PV	336	KANE	268
CONTRACT NO. 83782		SHEET NO. 2	
CROSS SECTION STA. 332+00 TO STA. 333+00			
F.H.W.A. REG.5 ILLINOIS PROJECT F-0336/00			



ILLINOIS ROUTE 64

SCALE:
 1" = 5' HORIZ.
 1" = 2' VERT.