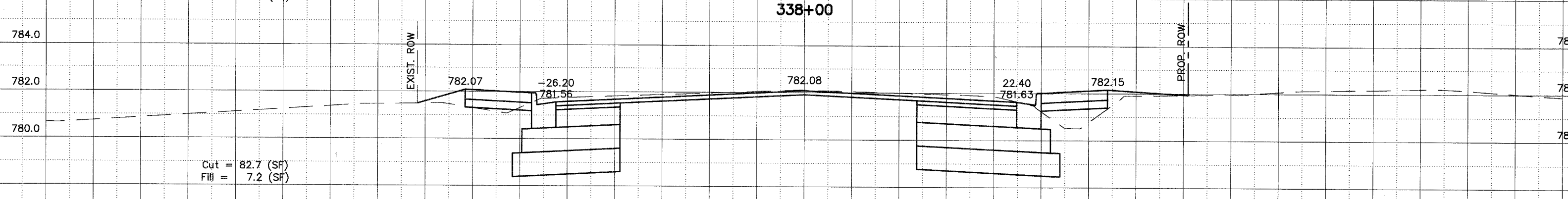
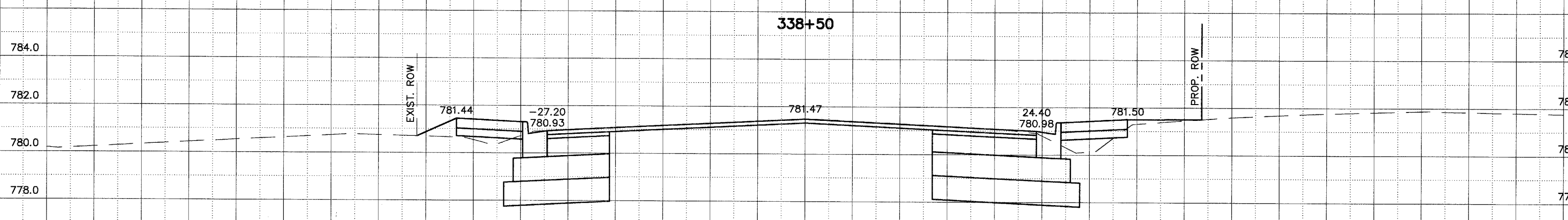
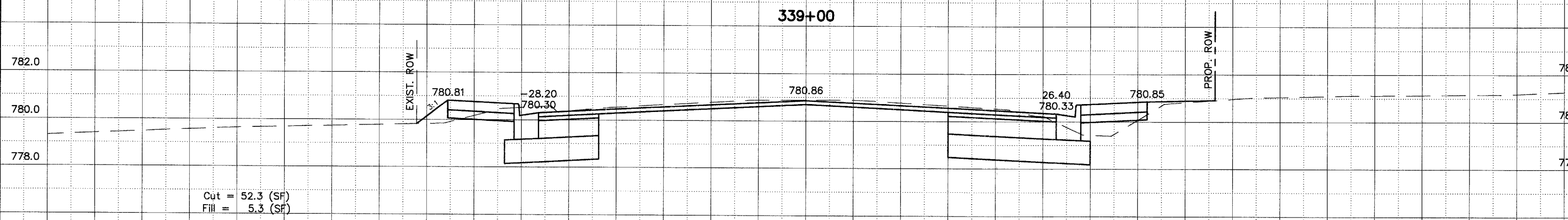
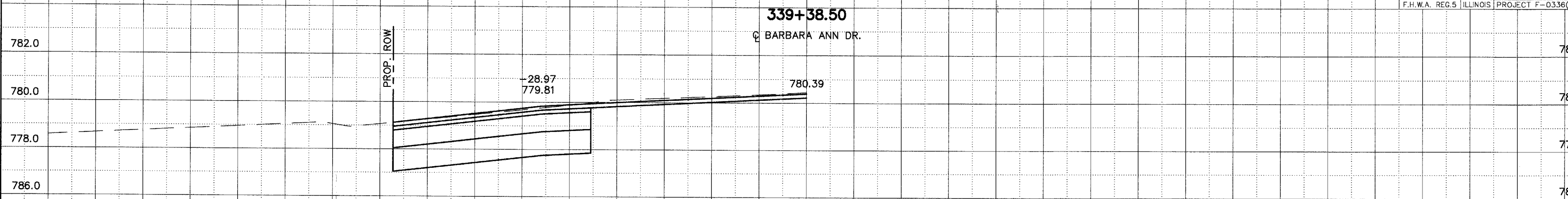


-80 -70 -60 -50 -40 -30 -20 -10 0 10 20 30 40 50 60 70 80

F.A.P. COUNTY SECTION	ROUTE 99-00243-00-PV	COUNTY KANE	TOTAL SHEETS 268
CONTRACT NO. 83782	CROSS SECTION STA. 338+00 TO STA. 339+38.50		PROJECT F-033600



ILLINOIS ROUTE 64

SCALE:
1" = 5' HORIZ.
1" = 2' VERT.

-80 -70 -60 -50 -40 -30 -20 -10 0 10 20 30 40 50 60 70 80