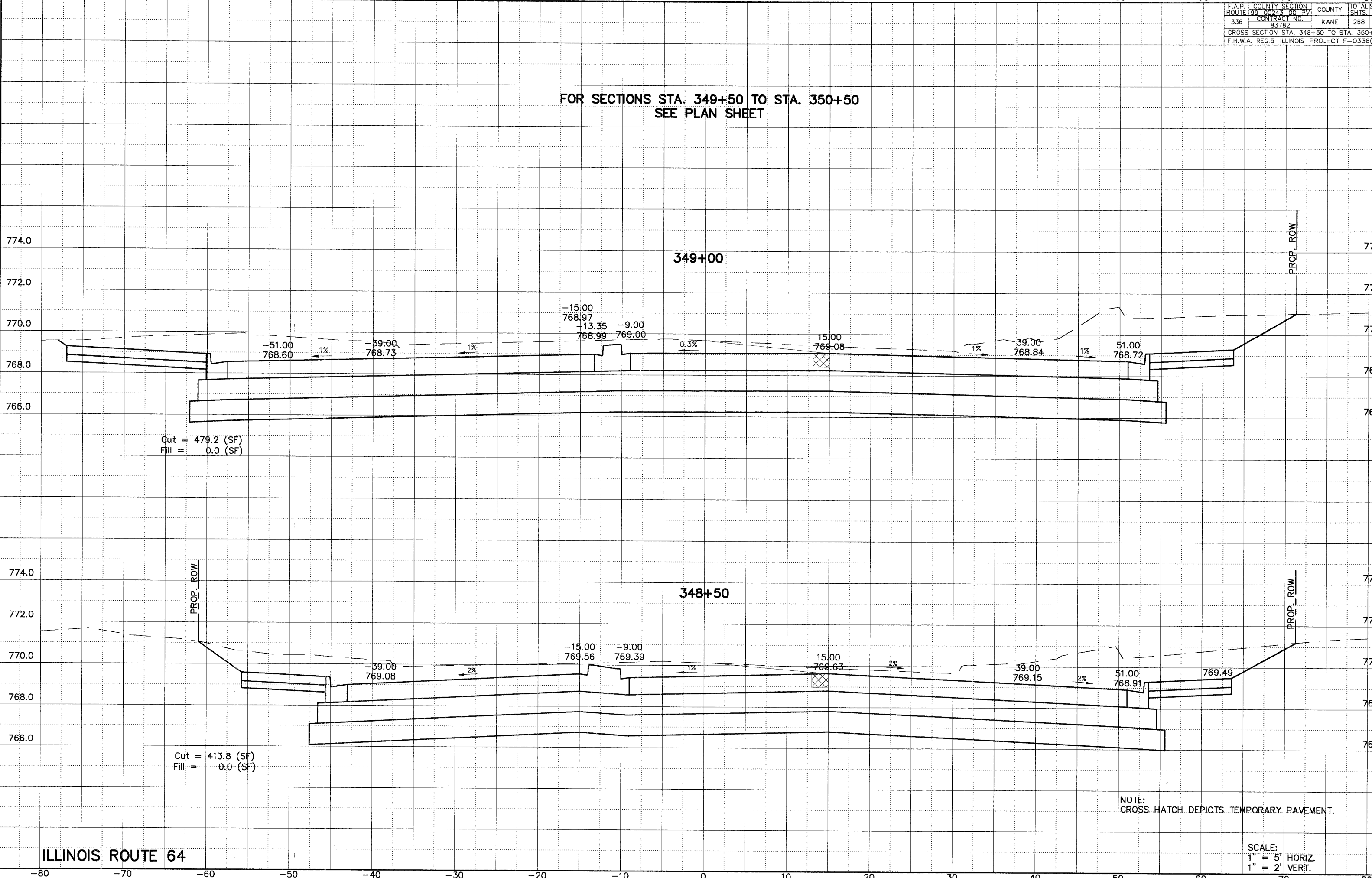


FOR SECTIONS STA. 349+50 TO STA. 350+50  
SEE PLAN SHEET

F.A.P. ROUTE	COUNTY SECTION	COUNTY	TOTAL SHEETS
336	99-00243-00-PV	KANE	268
	CONTRACT NO.		
	83782		
CROSS SECTION STA. 348+50 TO STA. 350+50			
F.H.W.A. REG.5 ILLINOIS PROJECT F-033600			



Cut = 479.2 (SF)  
Fill = 0.0 (SF)

Cut = 413.8 (SF)  
Fill = 0.0 (SF)

NOTE:  
CROSS-HATCH DEPICTS TEMPORARY PAVEMENT.

ILLINOIS ROUTE 64

SCALE:  
1" = 5' HORIZ.  
1" = 2' VERT.