

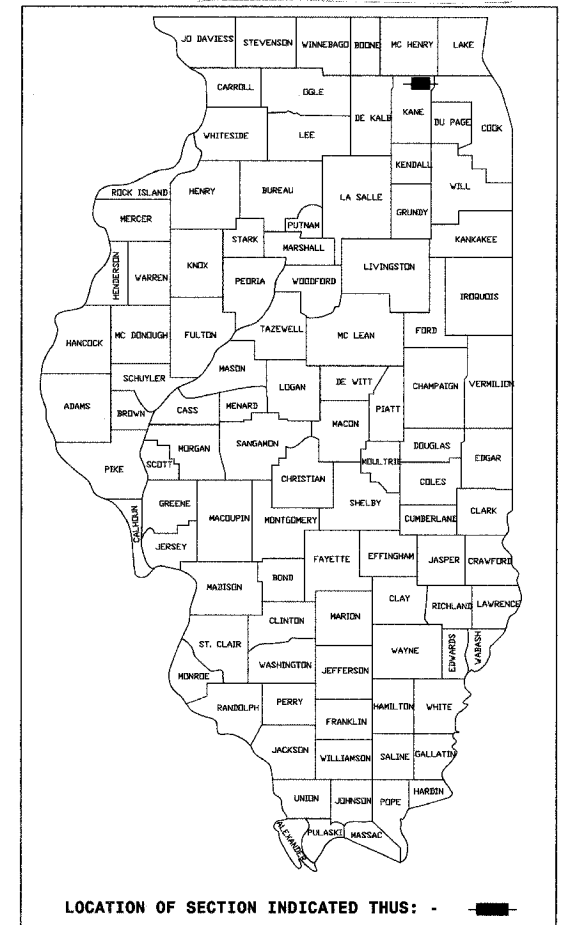
**SMITH ENGINEERING CONSULTANTS, INC.**  
 CIVIL/STRUCTURAL ENGINEERS AND SURVEYORS  
 4600 PRIMO PARKWAY, SUITE 201  
 McHENRY, ILLINOIS 60050  
 PH: 815-385-1776 FAX: 815-385-1781  
 www.smithengineering.com E-MAIL: sec@smithengineering.com  
 McHENRY HUNTLEY YORKVILLE  
 ILLINOIS PROFESSIONAL DESIGN FIRM # 184-000108

STATE OF ILLINOIS  
 DEPARTMENT OF TRANSPORTATION  
 DIVISION OF HIGHWAYS

**PLANS FOR PROPOSED  
 FEDERAL AID HIGHWAY**

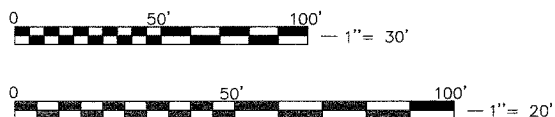
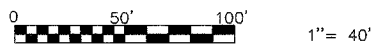
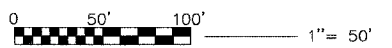
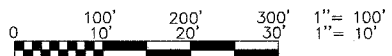
F.A.U. 1283 : MAIN STREET OVER THE FOX RIVER  
 SECTION NO. 02-00059-00-BR  
 ROADWAY RECONSTRUCTION, BRIDGE SUPERSTRUCTURE  
 REPLACEMENT AND UTILITY REPLACEMENT  
 PROJECT NO. BRM-8003 (179)  
 S.N. 045-6150  
 KANE COUNTY  
 C-91-078-02

F.A.U. RTE.	SECTION	COUNTY	TOTAL SHEETS	SHEET NO.
1283	02-00059-00-BR	KANE	51	1
PROJECT NO. BRM-0003 (179)				
FED. ROAD DIST. NO. 1 ILLINOIS HIGHWAY PROJECT 1				
CONTRACT NO. 83783				



FOR INDEX OF SHEETS, SEE SHEET NO. 2

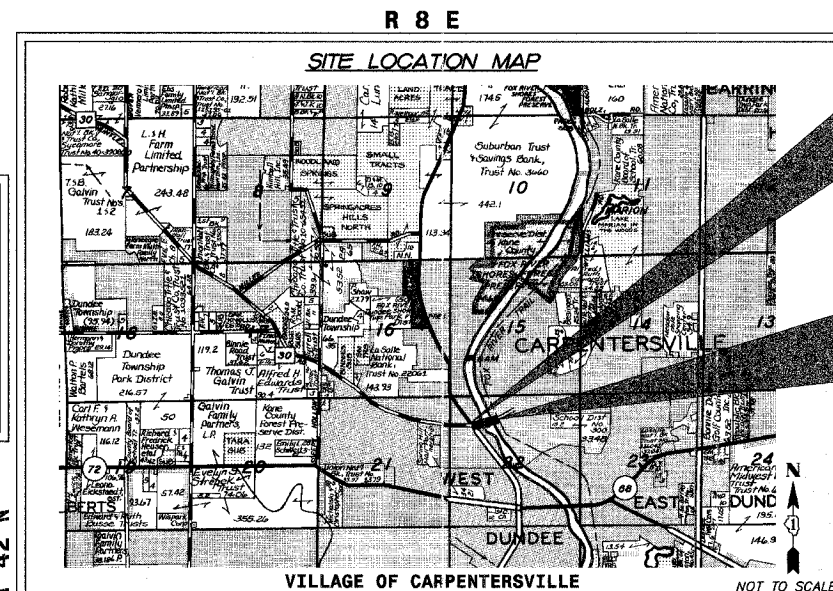
SCALES  
 PLAN: 1" = 20'  
 PROFILE HORIZ.: 1" = 20'  
 PROFILE VERT.: 1" = 5'  
 CROSS SECTIONS HORIZ.: 1" = 2'  
 CROSS SECTIONS VERT.: 1" = 5'



FULL SIZE PLANS HAVE BEEN PREPARED USING STANDARD ENGINEERING SCALES, REDUCED SIZED PLANS WILL NOT CONFORM TO STANDARD SCALES, IN MAKING MEASUREMENTS ON REDUCED PLANS, THE ABOVE SCALES MAY BE USED.

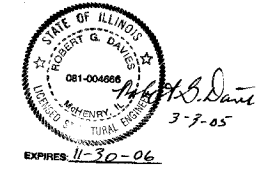
PROJECT LOCATED IN THE  
 VILLAGE OF CARPENTERSVILLE

**STRUCTURE INFORMATION**  
 EXISTING AND PROPOSED STRUCTURE IS FOUR SPANS (214'-0") REMOVE EXISTING CONCRETE DECK ON STEEL BEAM SUPERSTRUCTURE AND REPLACE WITH A 48' WIDE SUPERSTRUCTURE CONSISTING OF PPC DECK BEAMS. EXISTING SUBSTRUCTURE UNITS TO BE MODIFIED AND RE-USED.



MAIN STREET PROJECT BEGINS  
 STA. 106+41

MAIN STREET PROJECT ENDS  
 STA. 116+22



STATE OF ILLINOIS  
 DEPARTMENT OF TRANSPORTATION  
 DIVISION OF HIGHWAYS

APPROVED January 7, 2005  
*Ronald L. Ridd*  
 LOCAL AGENCY OFFICIAL

APPROVED March 2, 2005  
*Richard J. Ridd*  
 LOCAL ROAD ENGINEER

APPROVED March 2, 2005  
*Dina O'Keefe/PP*  
 DISTRICT ENGINEER

PRINTED BY AUTHORITY OF THE  
 STATE OF ILLINOIS

DESIGN SPEED  
 MAIN STREET: 30 MPH

SPEED LIMIT  
 MAIN STREET: 25 MPH

TRAFFIC DATA  
 MAIN STREET: 21,600 (1997)  
 23,304 (2025)

**PROFESSIONAL ENGINEER'S SIGN & SEAL**

*Theodore E. Hamilton*  
 THEODORE E. HAMILTON P.E.  
 DATE: January 8, 2005  
 LICENSE EXPIRES: 11/30/05

DUNDEE TOWNSHIP

GROSS LENGTH OF PROJECT = 981 FEET = 0.186 MILES  
 NET LENGTH OF PROJECT = 981 FEET = 0.186 MILES

FEDERAL AID DESIGN ENGINEER: CHAD RIDDLE (847) 705-4406

CALL JULIE 1-800-892-0123  
 WITH THE FOLLOWING:  
 COUNTY KANE  
 CITY-TOWNSHIP CARPENTERSVILLE - DUNDEE  
 SEC. & 1/4 SEC. NO. # 22

48 hours before you dig  
 (Excluding Sat., Sun. & Holidays)

CONTRACT NO. 83783