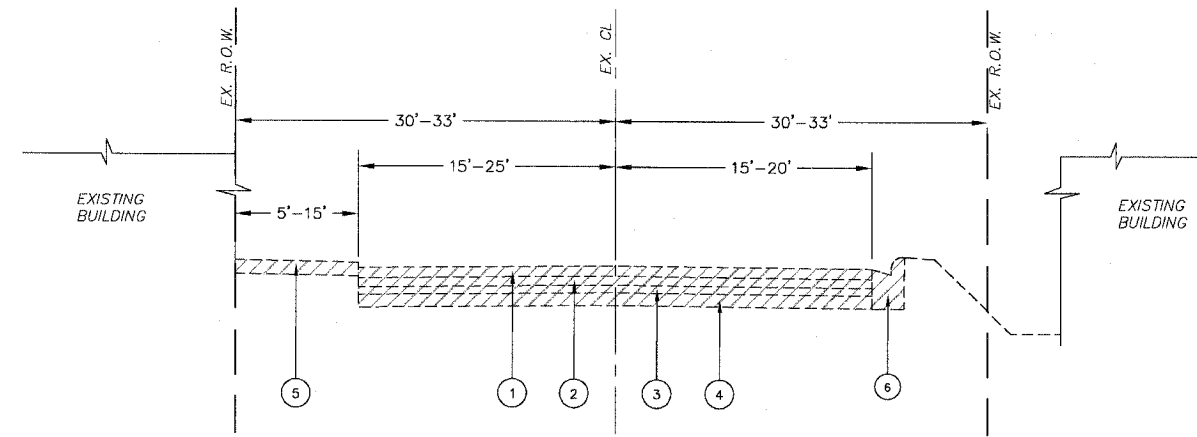
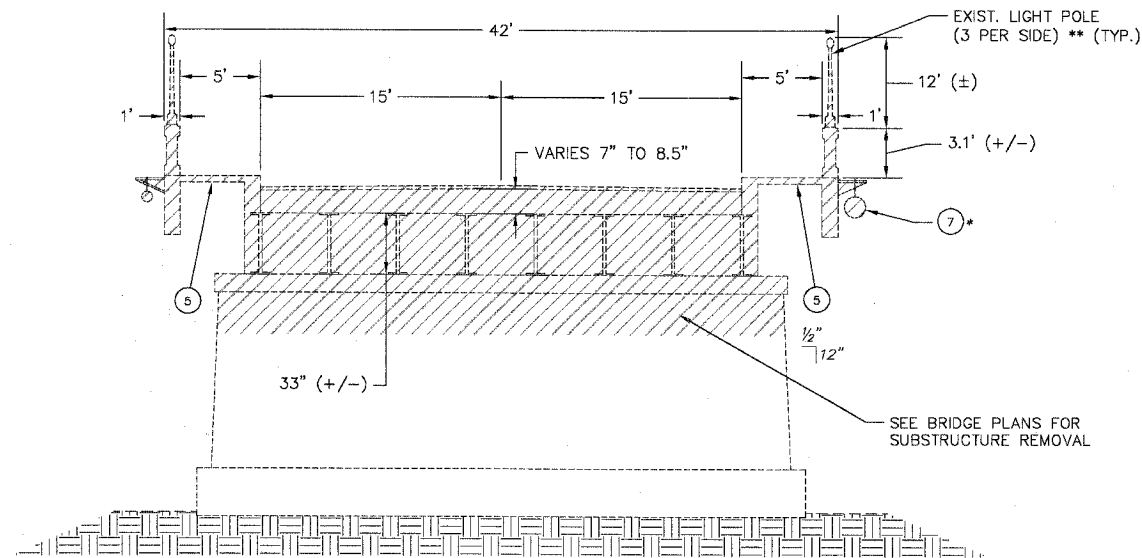


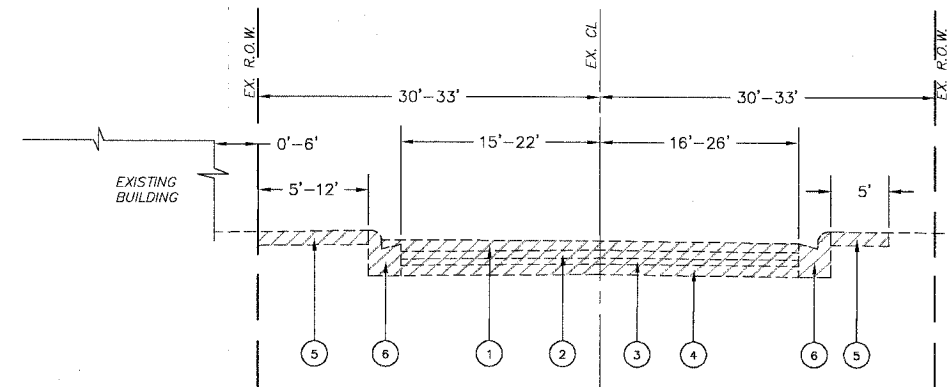
F.A.P. RTE.	SECTION	COUNTY	TOTAL SHEETS	SHEET NO.
1283	02-00059-00-BR	KANE	51	5
STA.	TO STA.			
FED. ROAD DIST. NO. 1		ILLINOIS HIGHWAY PROJECT		
CONTRACT #: 83783				



MAIN STREET - EXISTING TYPICAL SECTION
STA. 106+41 TO STA. 110+96



MAIN STREET BRIDGE - EXISTING TYPICAL SECTION
STA. 110+96 TO STA. 113+10

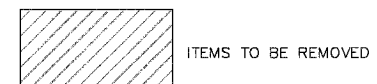


MAIN STREET - EXISTING TYPICAL SECTION
STA. 113+10 TO STA. 116+22

- LEGEND**
- 1 EXISTING BITUMINOUS PAVEMENT 4.25" - 8.5"
 - 2 EXISTING PAVING BRICKS, 3.5"
 - 3 EXISTING SAND BASE, 2" - 3"
 - 4 EXISTING CONCRETE BASE, 3" - 5"
 - 5 EXISTING PCC SIDEWALK
 - 6 EXISTING CONCRETE CURB AND GUTTER
 - 7 EXISTING WATERMAIN, 16" *
 - 8 PROPOSED BITUMINOUS CONCRETE SURFACE COURSE, SUPERPAVE, MIX D, N70, 1.5"
 - 9 PROPOSED BITUMINOUS CONCRETE BINDER COURSE, SUPERPAVE, IL-19, N70, 2.5"
 - 10 PROPOSED CONCRETE WEARING SURFACE, 5"
 - 11 PROPOSED AGGREGATE BASE 2" (CA-6 CRUSHED) (INCLUDED IN COST OF PCC SIDEWALK)
 - 12 PROPOSED PORTLAND CEMENT CONCRETE SIDEWALK 5"
 - 13 PROPOSED BITUMINOUS BASE COURSE, SUPERPAVE, 10"
 - 14 PROPOSED SUB-BASE GRANULAR MATERIAL, TYPE B, 4"
 - 15 PROPOSED TOPSOIL FURNISH AND PLACE, 6" & SODDING, SALT TOLERANT
 - 16 PROPOSED CONCRETE BRIDGE RAIL, SPECIAL
 - 17 PROPOSED POROUS GRANULAR EMBANKMENT, SUBGRADE (12" DEPTH, SEE NOTE BELOW)
 - 18 PROPOSED COMBINATION CONCRETE CURB AND GUTTER, TYPE B-6.12 (MINIMUM THICKNESS OF GUTTER FLAG SHALL BE 9". ADDITIONAL AGGREGATE UNDER GUTTER FLAG SHALL BE INCLUDED IN THE COST OF COMBINATION CONCRETE CURB & GUTTER TYPE B-6.12)
 - 19 PROPOSED GEOTECHNICAL FABRIC FOR GROUND STABILIZATION (SEE NOTE BELOW)
 - 20 PROPOSED CONCRETE SUPERSTRUCTURE (CLASS BD CONCRETE) 4" THICK

* EXISTING WATER MAIN TO REMAIN IN SERVICE UNTIL PROPOSED WATER MAIN HDPE PRESSURE PIPE, DIRECTIONAL BORING, 16" IS COMPLETED, TESTED, AND IN SERVICE.

** WORK TO REMOVE EXISTING LIGHT POLES, CONDUIT, ETC. WITH THE EXISTING SUPERSTRUCTURE SHALL BE PAID FOR UNDER "REMOVAL OF EXISTING SUPERSTRUCTURES."



REVISIONS	
NAME	DATE
7.	
6.	
5.	
4.	
3.	
2.	
1.	

SMITH ENGINEERING CONSULTANTS, INC.
CIVIL/STRUCTURAL ENGINEERS AND SURVEYORS
4500 PRIMO PARKWAY, SUITE 201
MCHENRY, ILLINOIS 60050
PH: 815-385-1778 FAX: 815-385-1781
www.smithengineering.com E-MAIL: sec@smithengineering.com
MCHENRY HUNTLEY YORKVILLE
ILLINOIS PROFESSIONAL DESIGN FIRM # 184-000108

ILLINOIS DEPARTMENT OF TRANSPORTATION

VILLAGE OF CARPENTERSVILLE
MAIN STREET OVER THE FOX RIVER
EXISTING TYPICAL SECTIONS

SCALE: "NTS"
DATE 02-25-2005

DRAWN BY WJH
CHECKED BY TEH

PLOT FILE STANDARD
COMP. FILE: 0401526.dwg