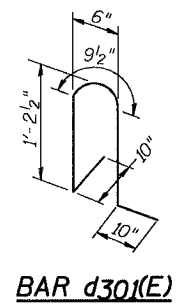
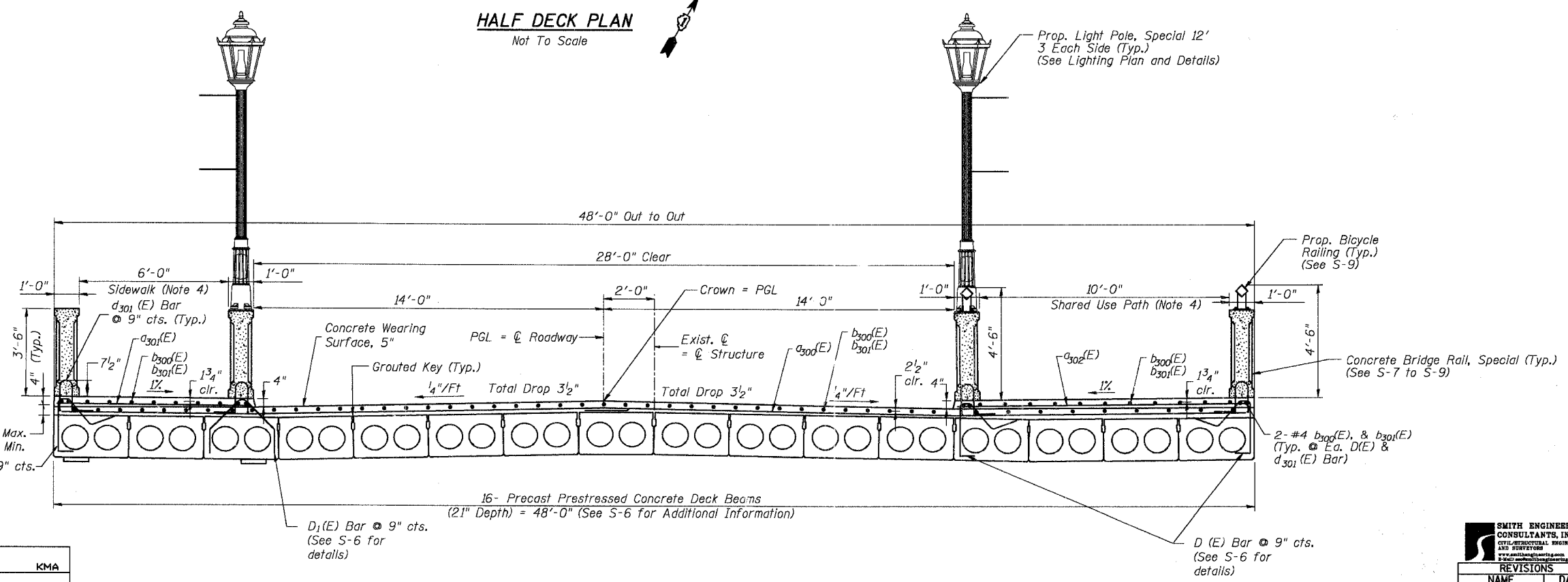


NOTES

1. Reinforcement Bar bending dimensions are out to out.
2. Lap lengths for Reinforcement Bars, Epoxy Coated shall conform to General Notes on S-2.
3. Bars indicated thus, 2 x 9-#5 indicates 9 lines of bars with 2 lengths per line.
4. 4" sidewalk and shared use path shall be paid for as Concrete Superstructure



HALF DECK PLAN
Not To Scale



CROSS SECTION
Not To Scale

SUPERSTRUCTURE BILL OF MATERIAL

Bar	No.	Size	Length	Shape	
a ₃₀₁ (E)	428	# 4	24'-8"	—	
a ₃₀₁ (E)	214	# 4	7'-8"	—	
a ₃₀₁ (E)	214	# 4	11'-8"	—	
b ₃₀₁ (E)	316	# 4	27'-5"	—	
b ₃₀₁ (E)	316	# 4	27'-11"	—	
d ₃₀₁ (E)	1144	# 5	4'-1"	⌒	
Reinforcement Bars, Epoxy Coated				Pound	26,370
Concrete Wearing Surface, 5"				Sq. Yds.	1,141
Concrete Superstructure				Cu. Yds.	53.6
Bridge Deck Grooving				Sq. Yds.	618

Reinforcement Bars designated (E) shall be Epoxy Coated

DESIGNED	KMA
CHECKED	RGD
DRAWN	WJH
CHECKED	NRF

SMITH ENGINEERING CONSULTANTS, INC.
CIVIL, ARCHITECTURAL, ENGINEERING AND SURVEYORS
1101 W. WASHINGTON ST. CHICAGO, ILL. 60607
TEL: 312-467-1000 FAX: 312-467-1001

REVISIONS	
NAME	DATE

ILLINOIS DEPARTMENT OF TRANSPORTATION
Deck Plan and Cross Section
Main Street Over Fox River
"Public Waters"
Village of Carpentersville
Section 02-00059-00-BR
SN. 045-6150
Kane County
DATE 02-25-2005